

Supplement of Atmos. Chem. Phys., 18, 17225–17257, 2018
<https://doi.org/10.5194/acp-18-17225-2018-supplement>
© Author(s) 2018. This work is distributed under
the Creative Commons Attribution 4.0 License.



Supplement of

Coarse-mode mineral dust size distributions, composition and optical properties from AER-D aircraft measurements over the tropical eastern Atlantic

Claire L. Ryder et al.

Correspondence to: Claire L. Ryder (c.l.ryder@reading.ac.uk)

The copyright of individual parts of the supplement might differ from the CC BY 4.0 License.

Supplement

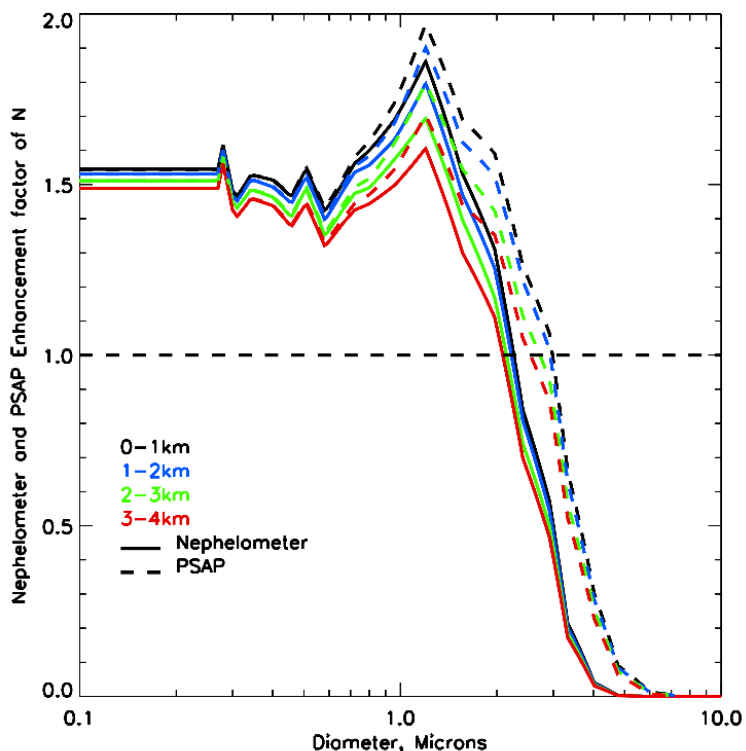


Fig S1: Inlet and pipe loss enhancement factor vs diameter for the nephelometer and PSAP behind Rosemount Inlets on the Bae146 FAAM research aircraft. Data from Trembath (2012).

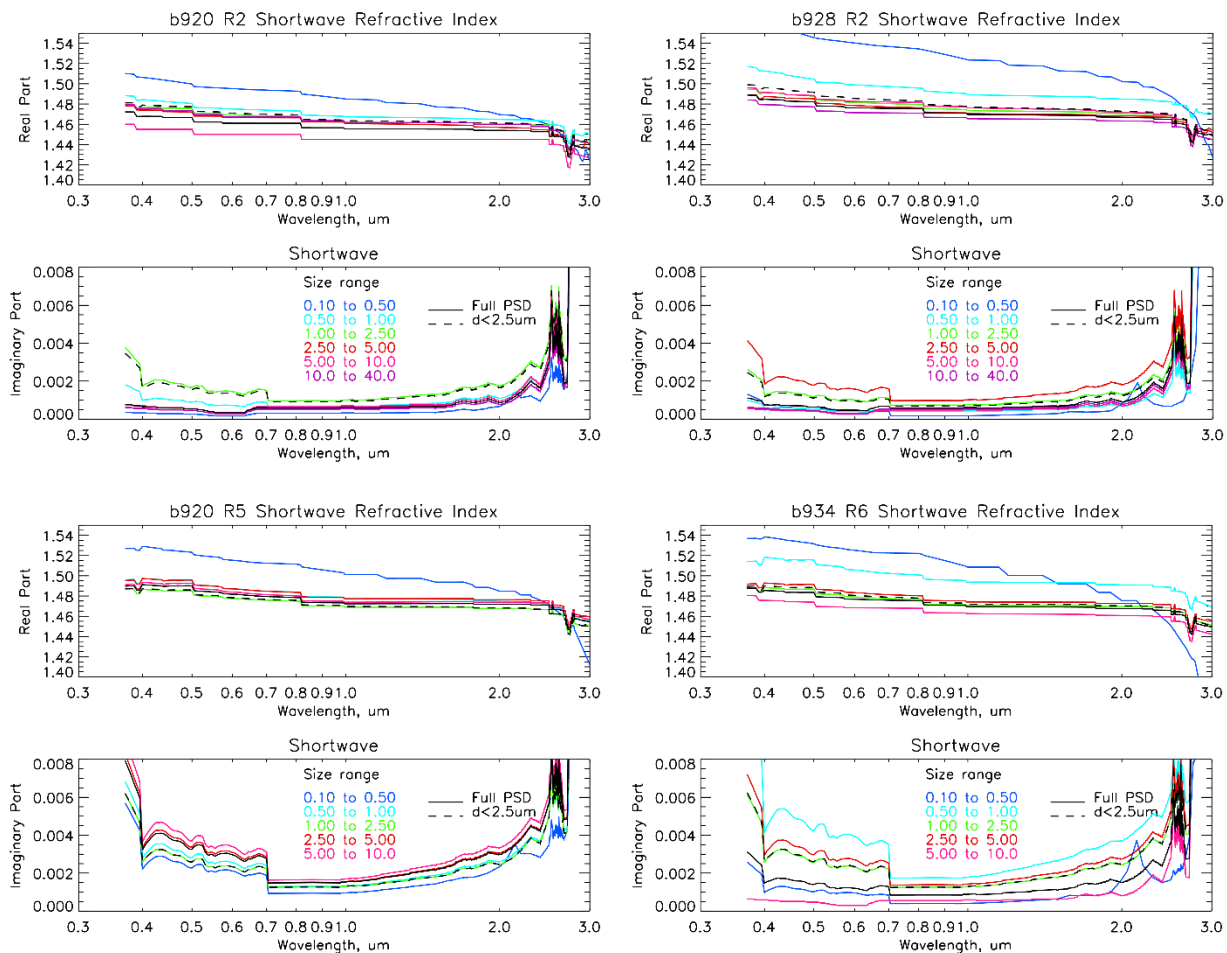


Fig S2: Spectral Shortwave refractive indices derived from filter samples, for flight legs in the MBL (top) and SAL (bottom).

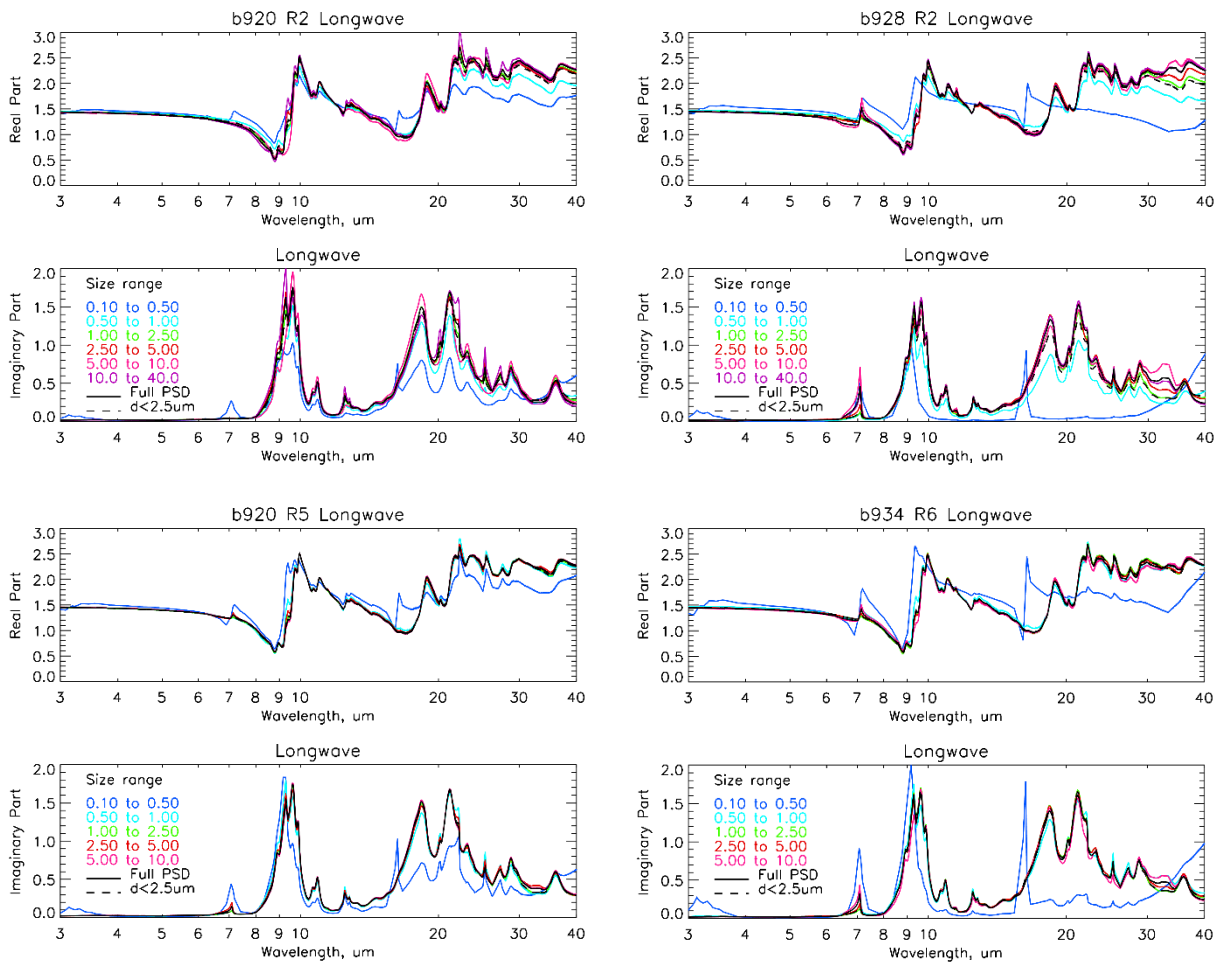


Fig S3: Spectral longwave refractive indices derived from filter samples, for flight legs in the MBL (top) and SAL (bottom).