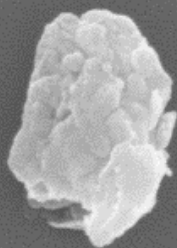


(a) Iceland



200 nm
Mag = 200.00 K X

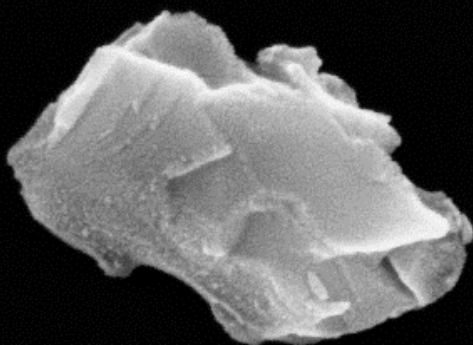
EHT = 5.00 kV
WD = 4.8 mm

Signal A = InLens
Aperture Size = 30.00 μ m
Image Pixel Size = 1.480 nm
WDJ = 1.500 μ m

Noise Reduction = Real Avg
Dwell Time = 100 ns N = 12
Scan Speed = 9

Date :22 Sep 2016
Time :9:35:52

(b) China



100 nm
Mag = 300.00 K X

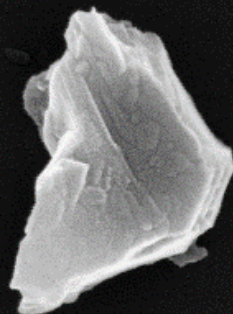
EHT = 5.00 kV
WD = 4.9 mm

Signal A = InLens
Aperture Size = 30.00 μ m
Image Pixel Size = 306.6 nm
WDJ = 1000.0 nm

Noise Reduction = Real Avg
Dwell Time = 100 ns N = 12
Scan Speed = 9

Date :22 Sep 2016
Time :10:54:04

(c) Himalaya



100 nm
Mag = 200.00 K X

EHT = 5.00 kV
WD = 4.9 mm

Signal A = InLens
Aperture Size = 30.00 μ m
Image Pixel Size = 1.480 nm
WDJ = 1.500 μ m

Noise Reduction = Real Avg
Dwell Time = 100 ns N = 12
Scan Speed = 9

Date :22 Sep 2016
Time :10:07:39