



Supplement of

Exploring the first aerosol indirect effect over Southeast Asia using a 10-year collocated MODIS, CALIOP, and model dataset

Alexa D. Ross et al.

Correspondence to: Alexa D. Ross (alexa.ross@ssec.wisc.edu)

The copyright of individual parts of the supplement might differ from the CC BY 4.0 License.

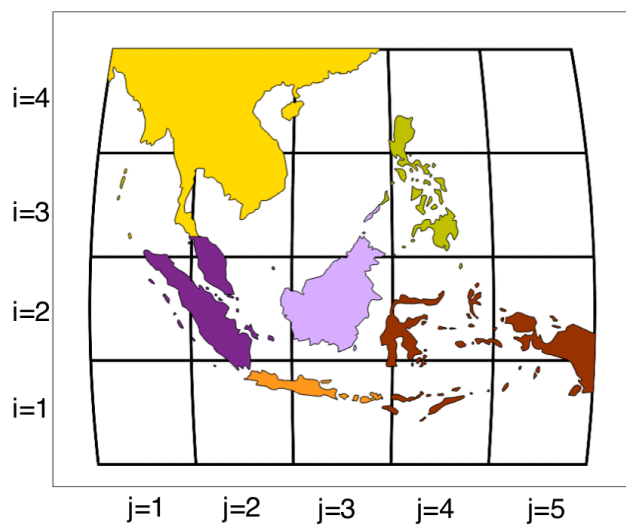


Fig. S1. Illustrated ocean grids and land regions. Each of the 20 ocean grids can be identified by an (i,j) coordinate.

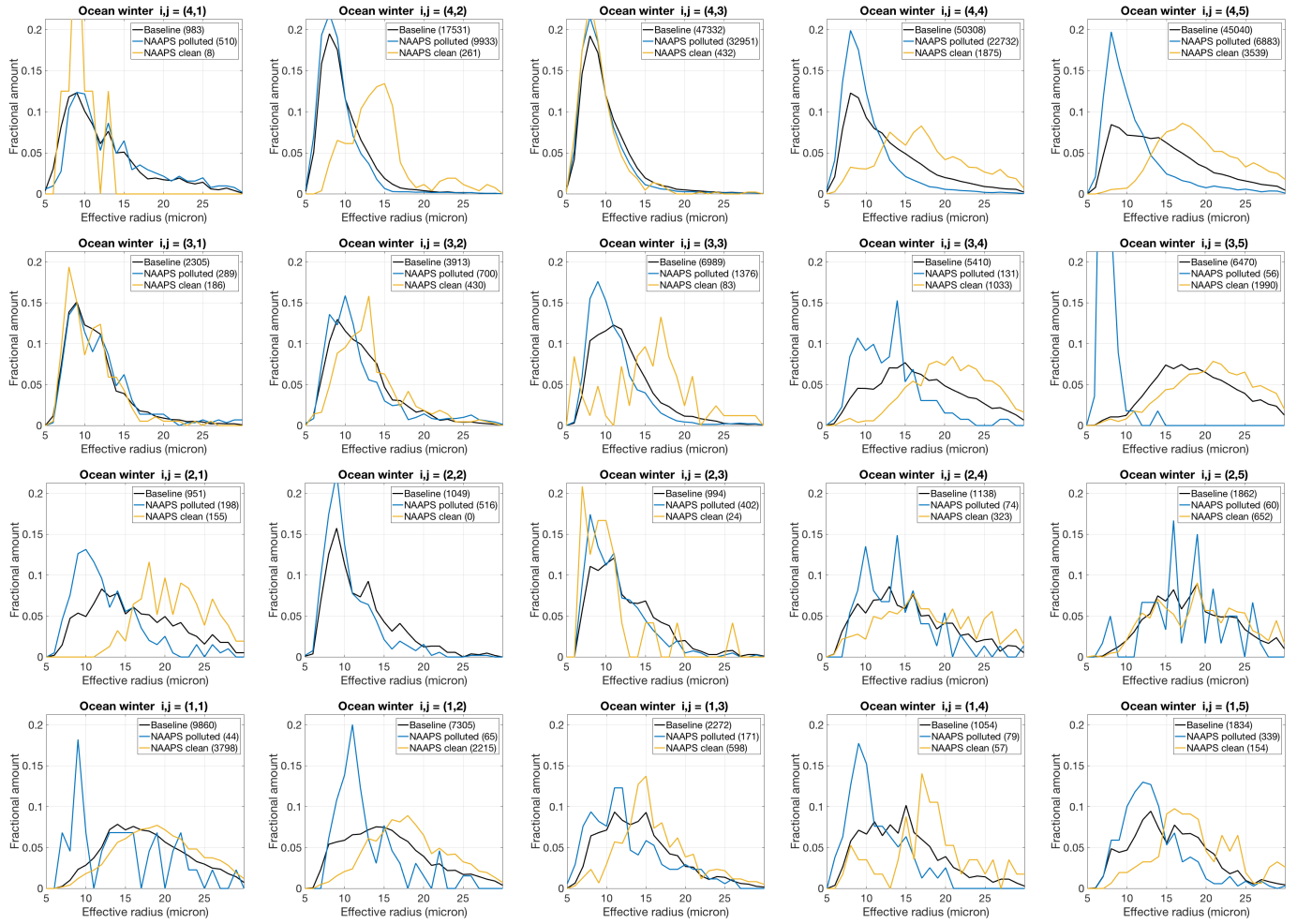


Fig. S2. Boreal winter normalized distributions of MODIS effective radius for 1-3 km ocean clouds. Distributions shown are for baseline, polluted, and clean data for twenty ocean regions.

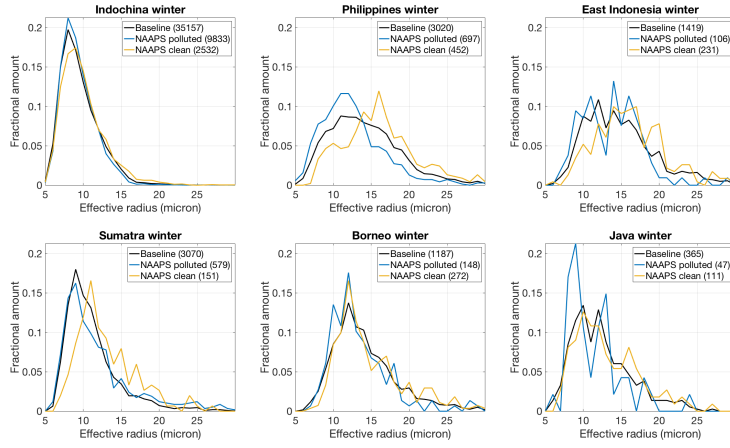


Fig. S3. Boreal winter normalized distributions of MODIS effective radius for 1-3 km land clouds. Distributions shown are for baseline, polluted, and clean data for six land regions.

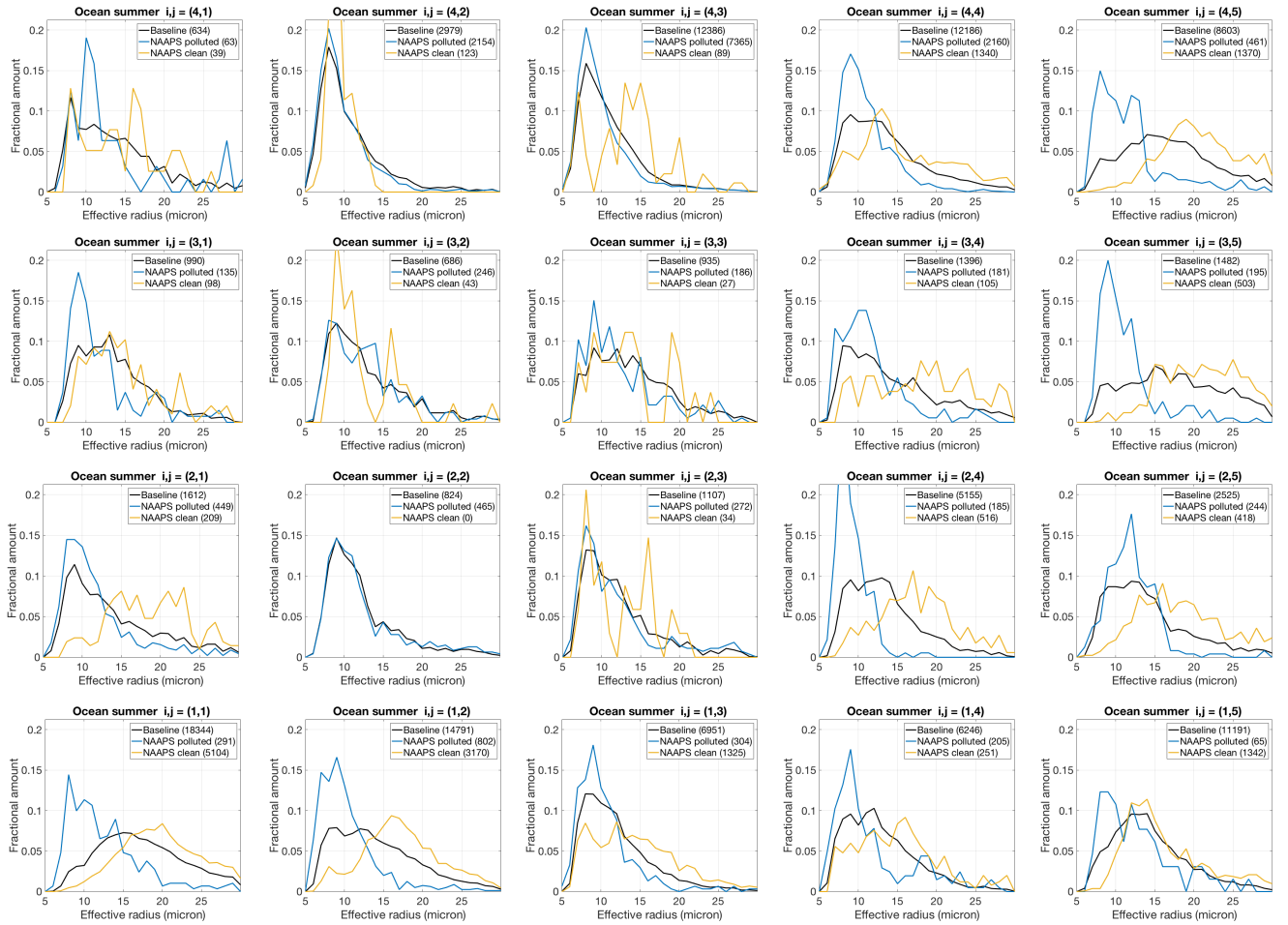


Fig. S4. Boreal summer normalized distributions of MODIS effective radius for 1-3 km ocean clouds. Distributions shown are for baseline, polluted, and clean data for twenty ocean regions.

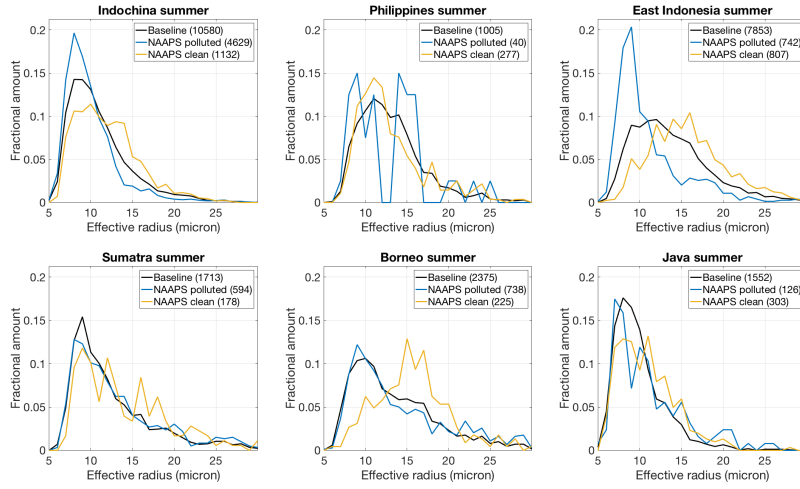


Fig. S5. Boreal summer normalized distributions of MODIS effective radius for 1-3 km land clouds. Distributions shown are for baseline, polluted, and clean data for six land regions.