

Supplement of Atmos. Chem. Phys., 18, 11709–11727, 2018  
<https://doi.org/10.5194/acp-18-11709-2018-supplement>  
© Author(s) 2018. This work is distributed under  
the Creative Commons Attribution 4.0 License.



*Supplement of*

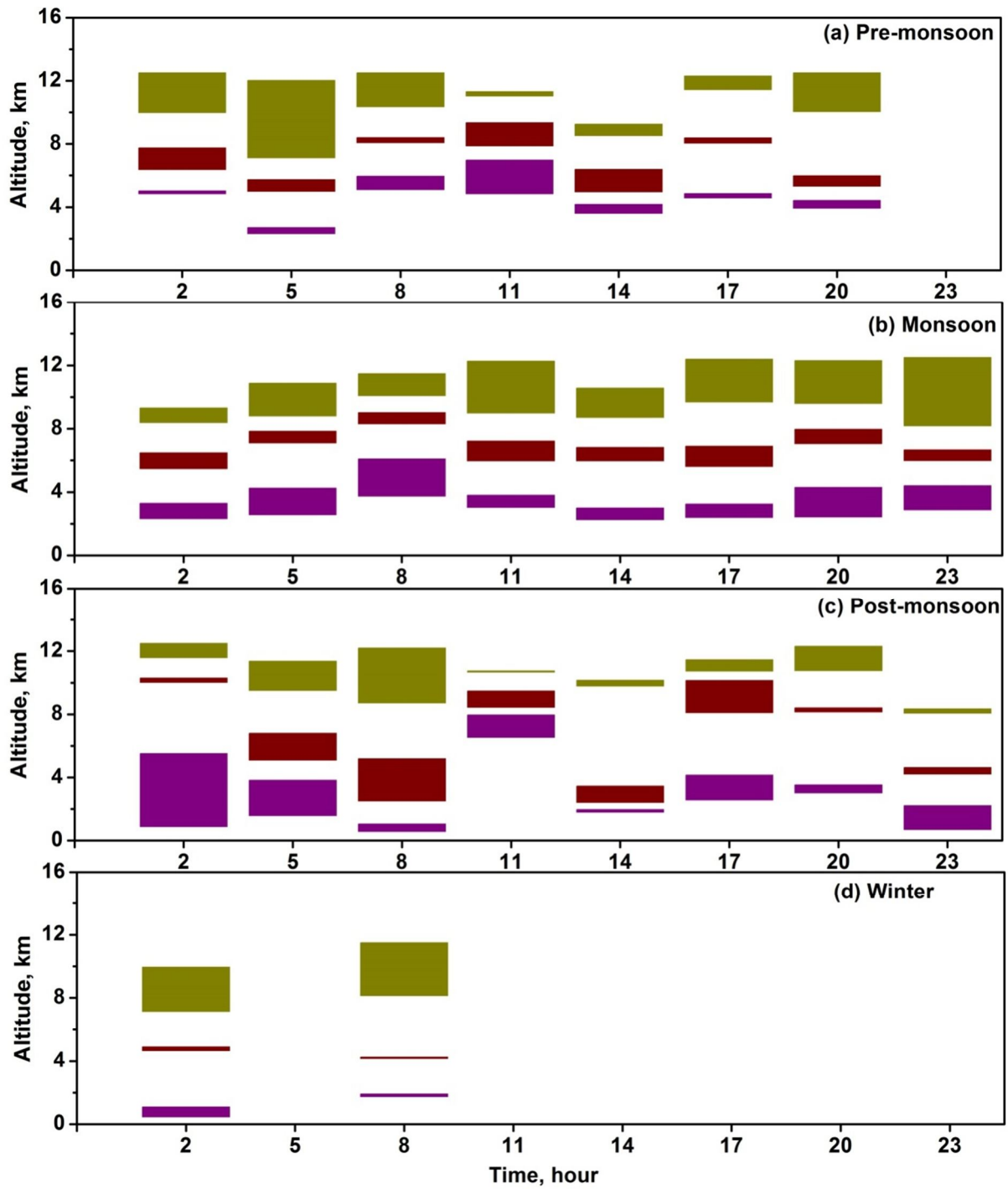
## **Cloud vertical structure over a tropical station obtained using long-term high-resolution radiosonde measurements**

**Nelli Narendra Reddy et al.**

*Correspondence to:* Madineni Venkat Ratnam (vratnam@narl.gov.in)

The copyright of individual parts of the supplement might differ from the CC BY 4.0 License.

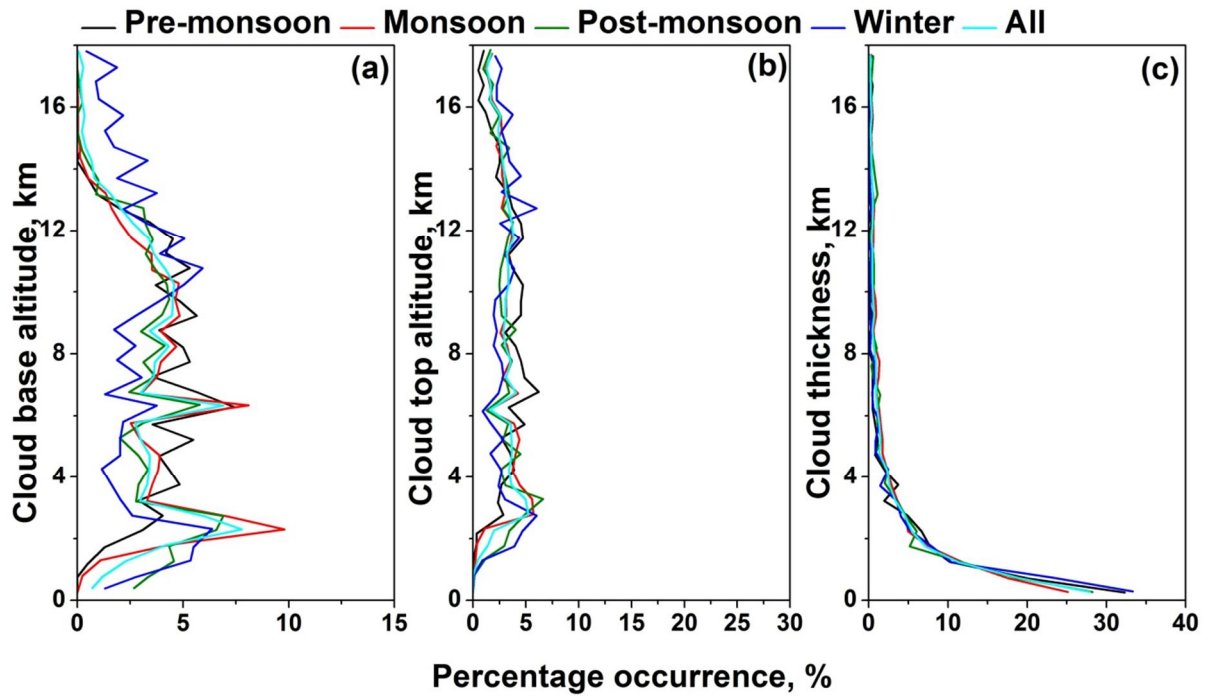
1 **Supplementary Figures**



2

3 **Figure S1.** Diurnal variations of mean vertical locations (base and top), thicknesses of three-  
4 layer clouds observed during (a) pre-monsoon, (b) monsoon, (c) post-monsoon, and (d)  
5 winter seasons.

6



7

8 **Figure S2.** Percentage occurrence of the (a) cloud base altitude, (b) cloud top altitude and

9 (c) cloud thickness observed during different seasons over Gadanki. Altitude bin size is 500

10 m.

11