

Supplement of Atmos. Chem. Phys., 17, 921–933, 2017
<http://www.atmos-chem-phys.net/17/921/2017/>
doi:10.5194/acp-17-921-2017-supplement
© Author(s) 2017. CC Attribution 3.0 License.



Atmospheric
Chemistry
and Physics
Open Access
EGU

Supplement of

Resolution dependence of uncertainties in gridded emission inventories: a case study in Hebei, China

Bo Zheng et al.

Correspondence to: Qiang Zhang (qiangzhang@tsinghua.edu.cn) and Kebin He (hekb@tsinghua.edu.cn)

The copyright of individual parts of the supplement might differ from the CC-BY 3.0 licence.

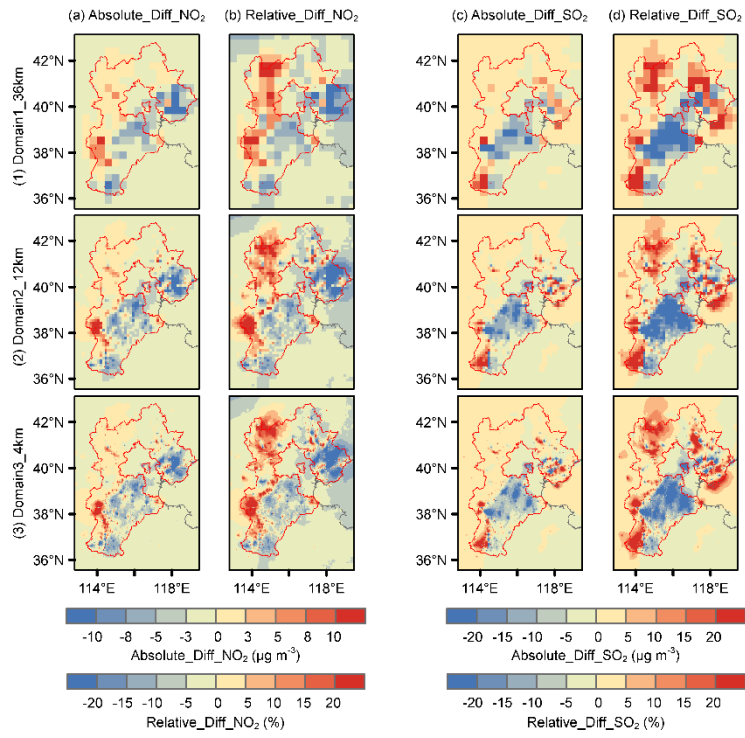


Figure S1 Comparative SO₂ and NO₂ maps modeled using S1 and S2 (S1 subtracted from S2)

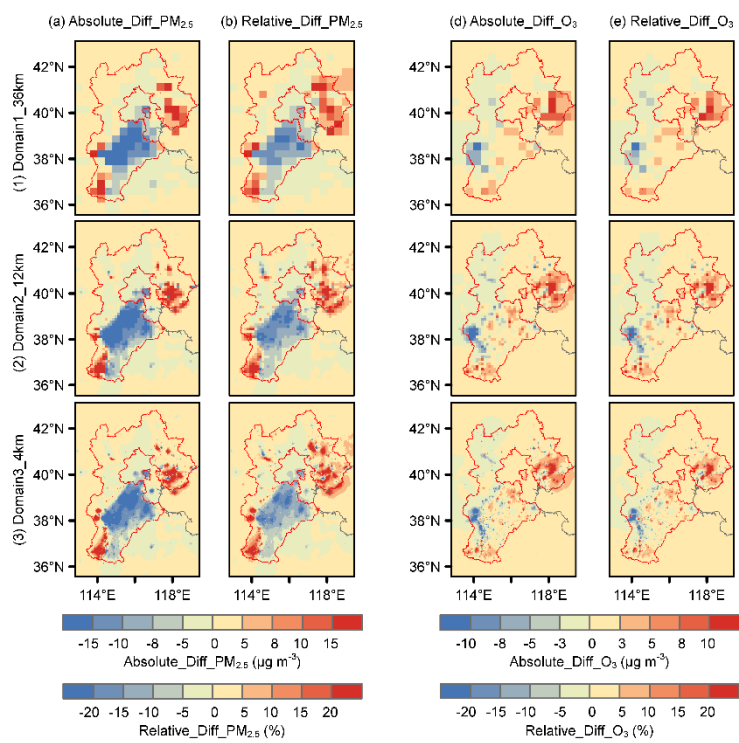


Figure S2 Comparative PM_{2.5} and O₃ maps modeled using S1 and S2 (S1 subtracted from S2)