



Corrigendum to

“Power plant fuel switching and air quality in a tropical, forested environment” published in Atmos. Chem. Phys., 17, 8987–8998, 2017

Adan S. S. Medeiros^{1,2}, Gisele Calderaro¹, Patricia C. Guimarães¹, Mateus R. Magalhaes¹, Marcos V. B. Morais⁴, Sameh A. A. Rafee⁴, Igor O. Ribeiro¹, Rita V. Andreoli³, Jorge A. Martins⁵, Leila D. Martins⁶, Scot T. Martin⁷, and Rodrigo A. F. Souza³

¹Post-graduate Program in Climate and Environment, CLIAMB, INPA/UEA, Av. André Araújo, 2936, 69060-001, Manaus, Amazonas, Brazil

²Amazonas State University, Center of Superior Studies of Tefé, R. Brasília, 2127, 69470-000, Tefé, Amazonas, Brazil

³Amazonas State University, Superior School of Technology, Av Darcy Vargas, 1200, 69065-020, Manaus, Amazonas, Brazil

⁴Post-graduate Program in Environmental Engineering, Federal University of Technology, Av. Dos Pioneiros, 3131, 86047-125, Londrina, Paraná, Brazil

⁵Department of Physics, Federal University of Technology, Av. Dos Pioneiros, 3131, 86047-125, Londrina, Paraná, Brazil

⁶Department of Chemistry, Federal University of Technology, Av. Dos Pioneiros, 3131, 86047-125, Londrina, Paraná, Brazil

⁷School of Engineering and Applied Sciences, Harvard University, 02138, Cambridge, Massachusetts, USA

Correspondence to: Scot T. Martin (scot_martin@harvard.edu) and Rodrigo A. F. Souza (souzaraf@gmail.com)

Published: 8 August 2017

Figure 3 is corrected herein to include several highlights mentioned in the figure caption, including the black box and notation of cases A, B, and C.

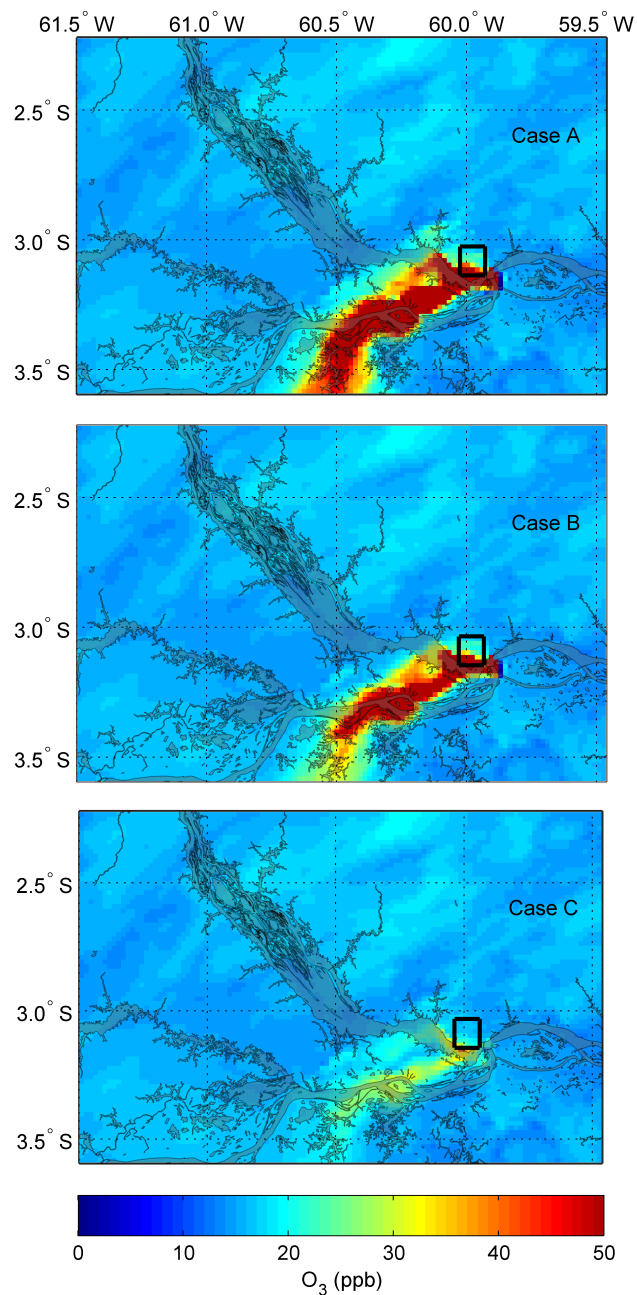


Figure 3. Maps of near-surface ozone concentrations for historical emissions (case A), present-day emissions (case B), and planned future emissions (case C). Ozone concentrations correspond to 15:00 (local time) near the surface for the meteorology of 1 February 2014. The local river system is shown in the background. The black box, centered over the population center of Manaus, represents the averaging area used in the box-and-whisker plots of Figs. 2 and 4.