

Supplement of Atmos. Chem. Phys., 17, 7277–7290, 2017
<https://doi.org/10.5194/acp-17-7277-2017-supplement>
© Author(s) 2017. This work is distributed under
the Creative Commons Attribution 3.0 License.



Supplement of

Insight into winter haze formation mechanisms based on aerosol hygroscopicity and effective density measurements

Yuanyuan Xie et al.

Correspondence to: Xingnan Ye (yexingnan@fudan.edu.cn) and Jianmin Chen (jmchen@fudan.edu.cn)

The copyright of individual parts of the supplement might differ from the CC BY 3.0 License.

Supplementary Figures

Figure S1 Meteorological conditions during the observation period.

Figure S2 Time series of concentrations of NO, NO₂, SO₂, and CO during the representative PM episode from 7 to 12 January.

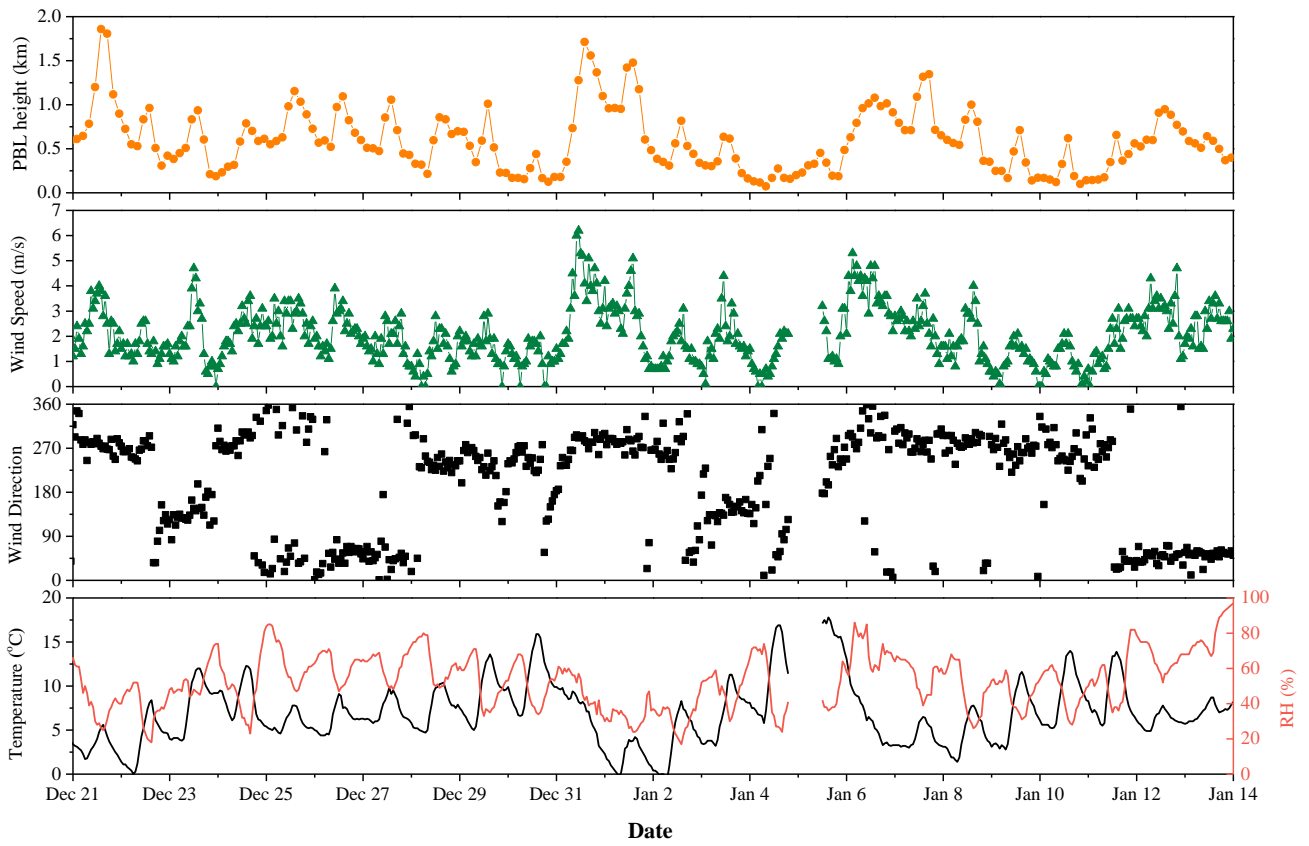


Figure S1 Meteorological conditions during the observation period.

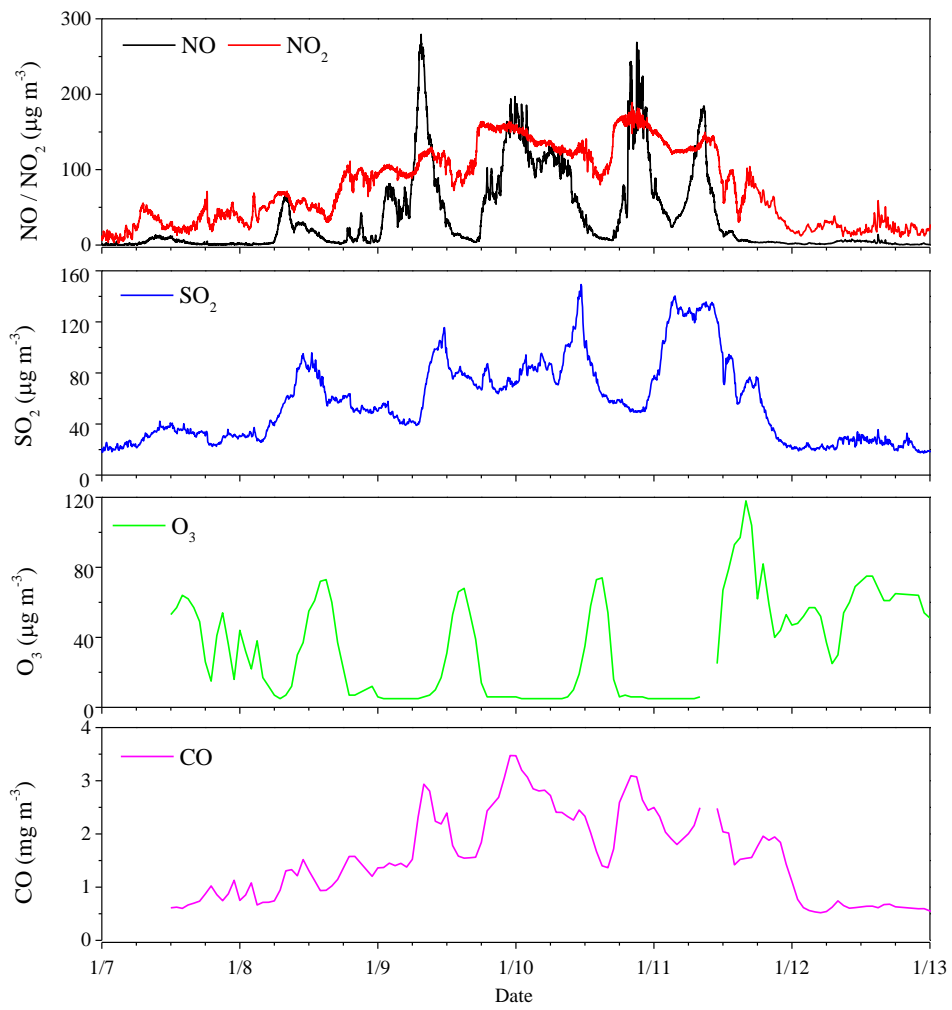


Figure S2 Time series of concentrations of NO, NO₂, SO₂, and CO during the representative PM episode from 7 to 12 January.