



***Corrigendum to***  
**“Remote sensing and modelling analysis of the extreme dust storm hitting the Middle East and eastern Mediterranean in September 2015” published in Atmos. Chem. Phys., 17, 4063–4079, 2017**

Stavros Solomos<sup>1</sup>, Albert Ansmann<sup>2</sup>, Rodanthi-Elisavet Mamouri<sup>3</sup>, Ioannis Biniotoglou<sup>1,5</sup>, Platon Patlakas<sup>4</sup>, Eleni Marinou<sup>1,6</sup>, and Vassilis Amiridis<sup>1</sup>

<sup>1</sup>Institute for Astronomy, Astrophysics, Space Applications and Remote Sensing (IAASARS), National Observatory of Athens, Athens, Greece

<sup>2</sup>Leibniz Institute for Tropospheric Research, Leipzig, Germany

<sup>3</sup>Department of Civil Engineering and Geomatics, Cyprus University of Technology, Limassol, Cyprus

<sup>4</sup>School of Physics, Division of Environment and Meteorology, University of Athens, Athens, Greece

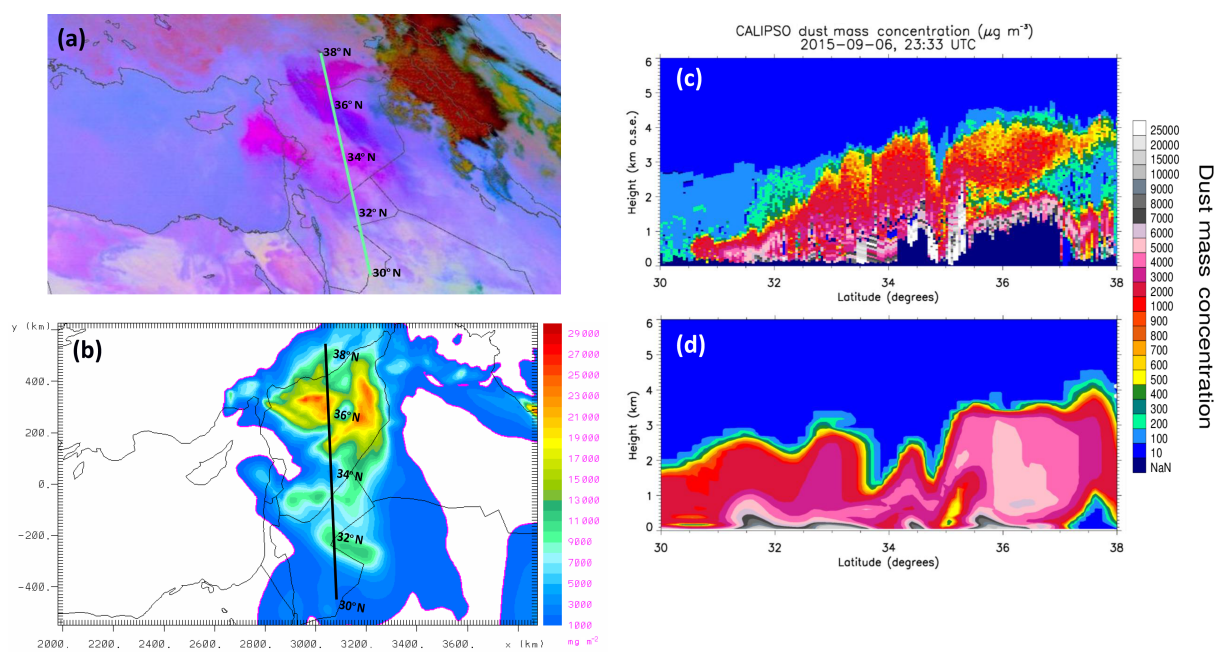
<sup>5</sup>National Institute of R & D for Optoelectronics, Magurele, Ilfov, Romania

<sup>6</sup>Laboratory of Atmospheric Physics, Physics Department, Aristotle University of Thessaloniki, 54124 Thessaloniki, Greece

*Correspondence to:* Stavros Solomos (stavros@noa.gr)

Published: 5 April 2017

In the above-mentioned paper, Fig. 9c and d were missing.  
See below the correct Fig. 9 panels.



**Figure 9.** (a) MSG-SEVIRI RGB map and CALIPSO overflight (green line); (b) model dust load ( $\text{mg m}^{-2}$ ); (c) CALIPSO dust mass concentration ( $\mu\text{g m}^{-3}$ ); and (d) model dust mass concentration on 6 September 2015, 23:33 UTC. Due to the severity of the event, the CALIPSO signal is totally attenuated below  $\sim 1$  km a.s.l. in the area between  $35$  and  $37^\circ$  N (dark blue colour).