



*Supplement of*

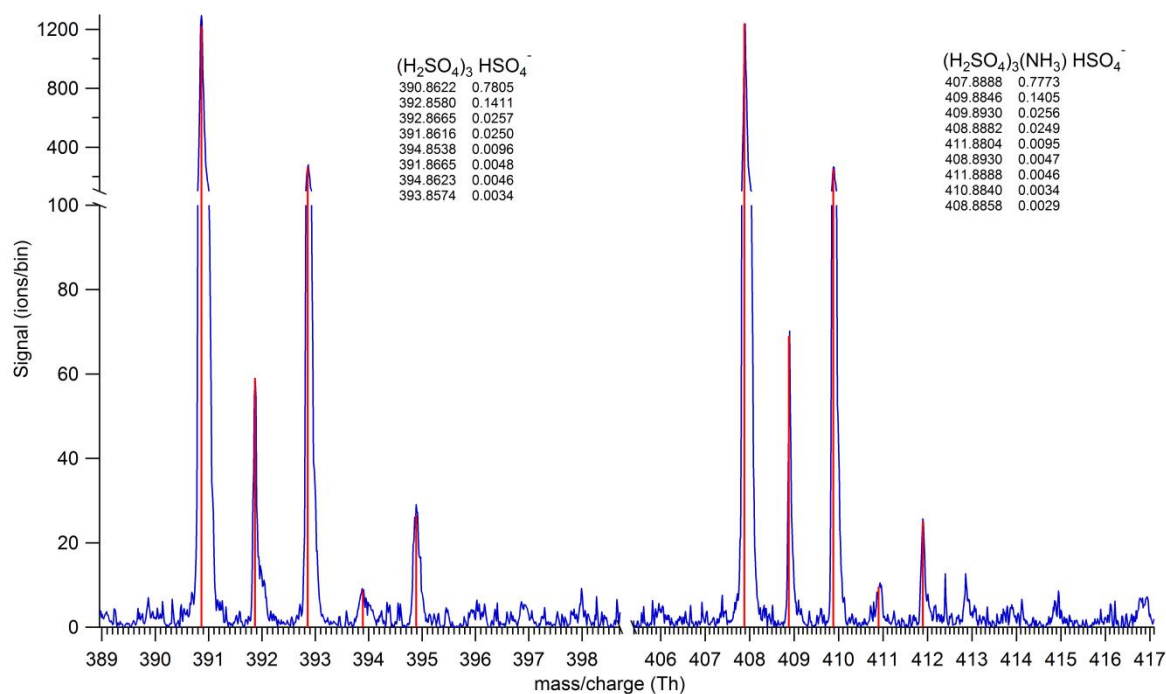
## **Chemical characterization of atmospheric ions at the high altitude research station Jungfraujoch (Switzerland)**

**Carla Frege et al.**

*Correspondence to:* Josef Dommen ([josef.dommen@psi.ch](mailto:josef.dommen@psi.ch))

The copyright of individual parts of the supplement might differ from the CC-BY 3.0 licence.

## SUPPLEMENTARY INFORMATION



**Figure S1** Example of peak fitting of  $(\text{H}_2\text{SO}_4)_3\text{HSO}_4^-$  and  $(\text{H}_2\text{SO}_4)_3(\text{NH}_3)\text{HSO}_4^-$  and their corresponding isotopes. The notation below each molecular formula shows the mass and abundance of the main isotopes.

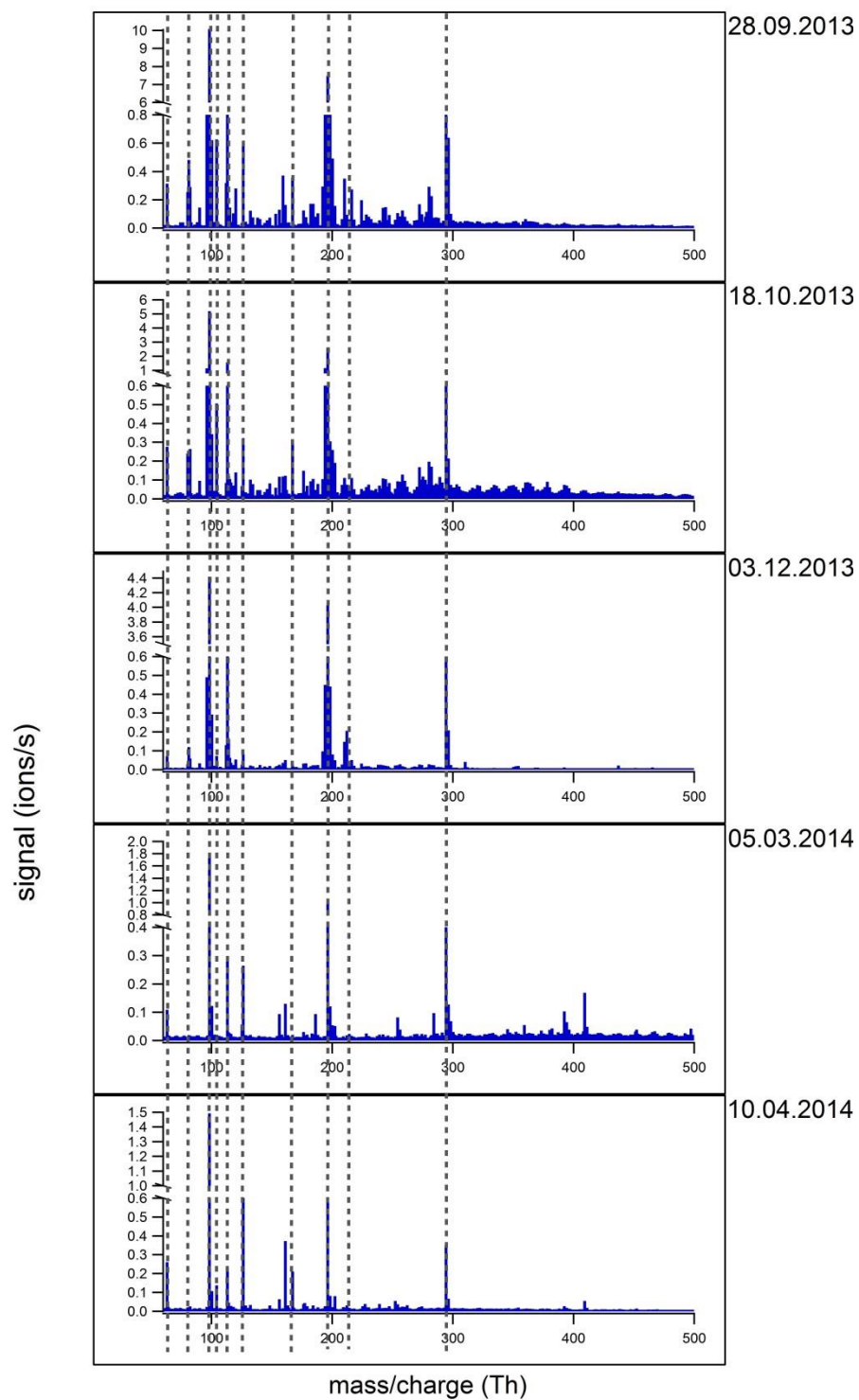


Figure S2. Comparison of spectra in different months. Dotted lines show the main peaks as constant independently of the season.