

Supplement of Atmos. Chem. Phys., 17, 1529–1541, 2017  
<http://www.atmos-chem-phys.net/17/1529/2017/>  
doi:10.5194/acp-17-1529-2017-supplement  
© Author(s) 2017. CC Attribution 3.0 License.



Atmospheric  
Chemistry  
and Physics  
Open Access  
EGU

*Supplement of*

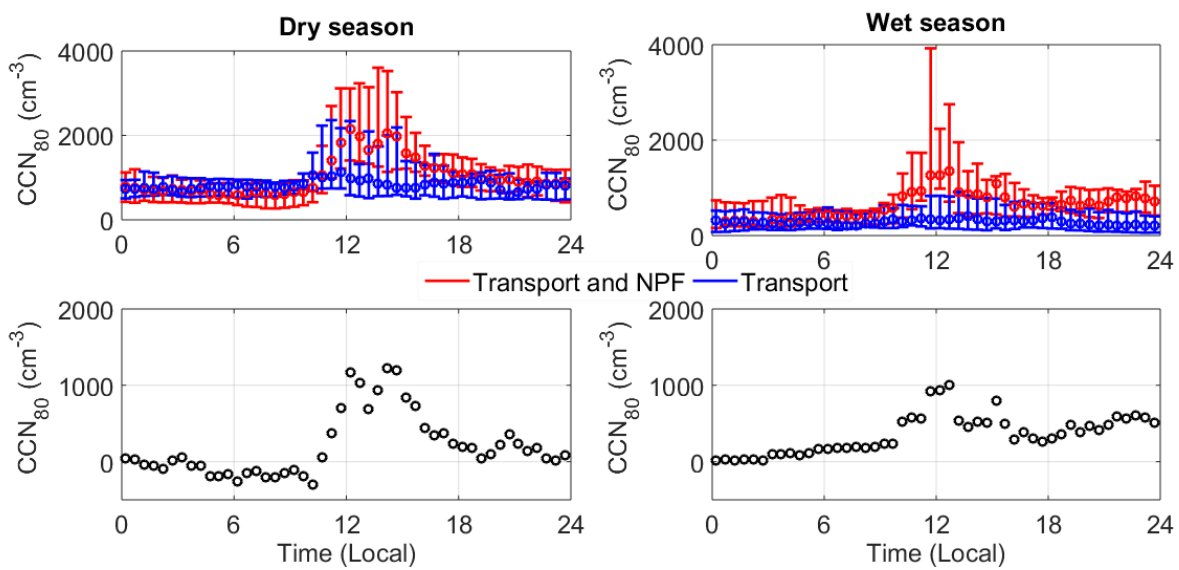
## **CCN production by new particle formation in the free troposphere**

**Clémence Rose et al.**

*Correspondence to:* Clémence Rose (c.rose@opgc.univ-bpclermont.fr)  
and Karine Sellegri (k.sellegri@opgc.univ-bpclermont.fr)

The copyright of individual parts of the supplement might differ from the CC-BY 3.0 licence.

# 1 Results



10

11 Fig. S1. Median diurnal variation of  $CCN_{80}$  on event (upper panel, red line) and non-event  
12 days (upper panel, blue line).  $CCN_{80}$  attributed to NPF (lower panel) is calculated as the  
13 difference of the concentrations recorded on event and non-event days. Lower and upper  
14 limits of the error bars stand for the 1<sup>st</sup> and 3<sup>rd</sup> quartile, respectively.

15

16

17

18

19

20

21

22

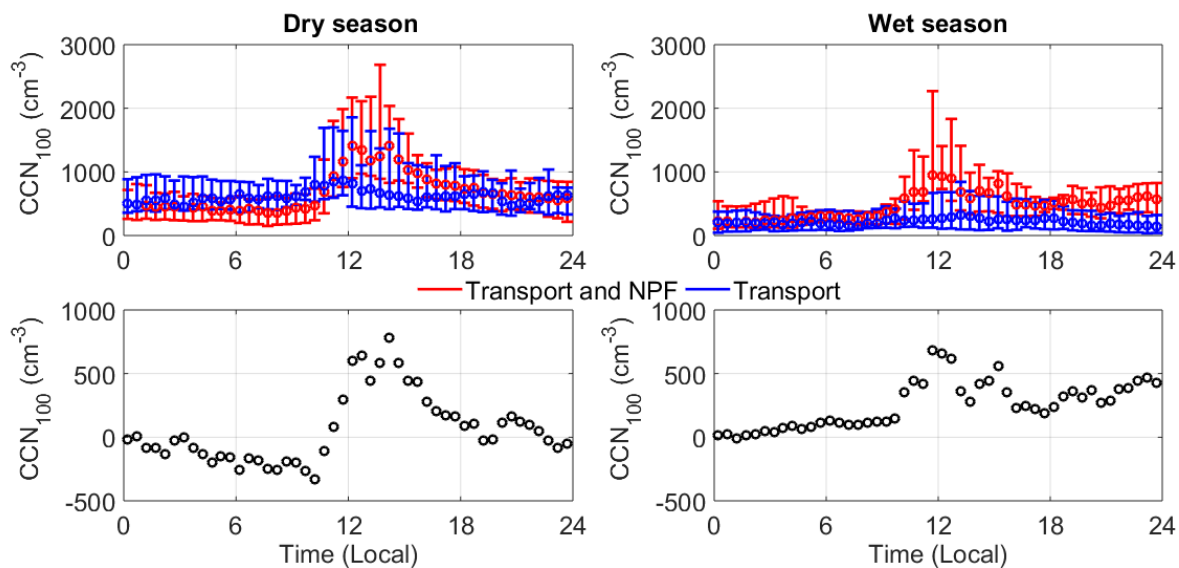
23

24

25

26

1



10 Fig. S2. Median diurnal variation of  $CCN_{100}$  on event (upper panel, red line) and non-event  
11 days (upper panel, blue line).  $CCN_{100}$  attributed to NPF (lower panel) is calculated as the  
12 difference of the concentrations recorded on event and non-event days. Lower and upper  
13 limits of the error bars stand for the 1<sup>st</sup> and 3<sup>rd</sup> quartile, respectively.

14

15

16

17

18

19

20

21

22

23

24

25

26

1  
2  
3  
4  
5  
6  
7  
8  
9  
10  
11  
12  
13  
14  
15  
16  
17  
18  
19  
20  
21  
22  
23  
24  
25  
26

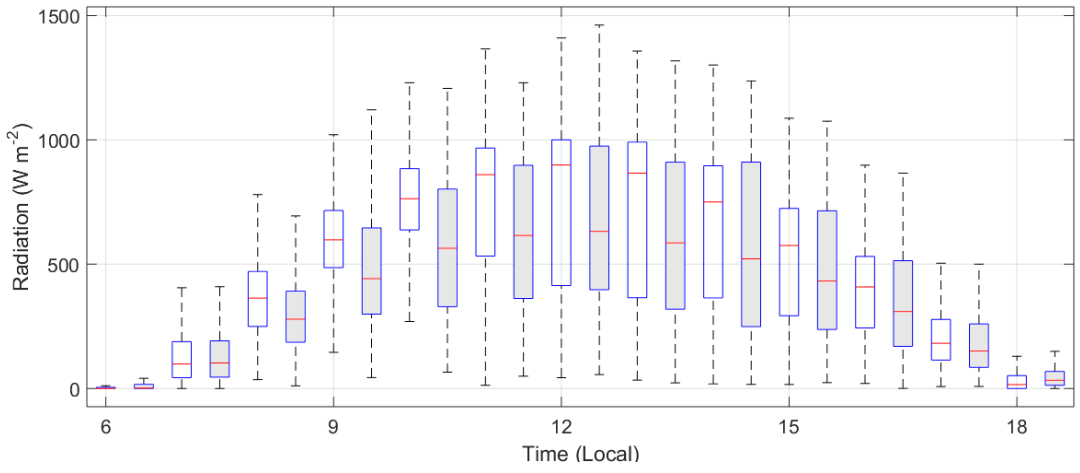


Fig. S3. Diurnal variation of global radiation on event (white bars) and non-event days (grey bars). Red line represents the median of the data, bottom and top edges of the box symbolize the 25th and 75th percentile, respectively. The dashed lines represent the remaining of the data still within the relevant statistical limit.

1  
2  
3  
4  
5  
6  
7  
8  
9  
10  
11  
12  
13  
14

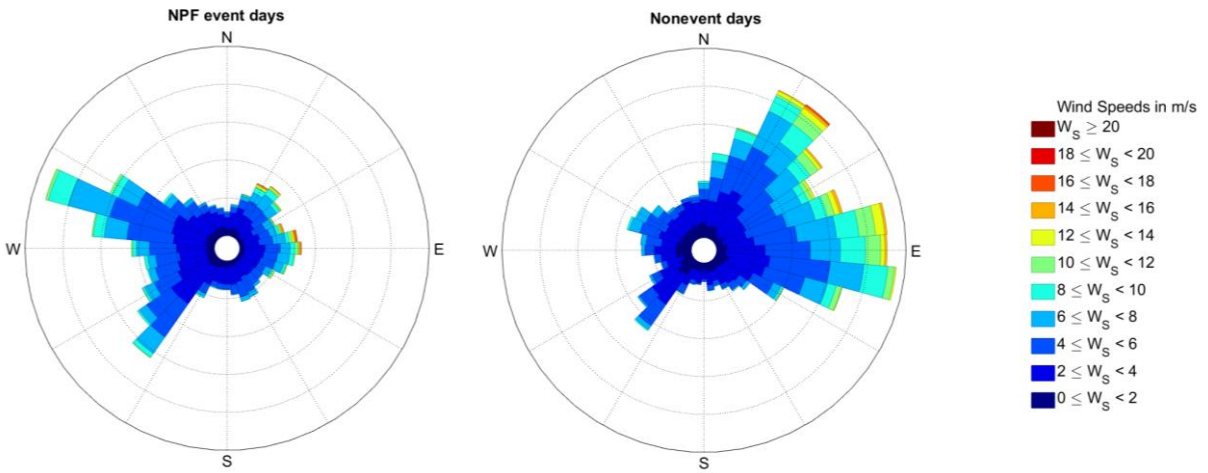


Fig. S4. Wind direction and speed recorded on event and non-event days.