



## ***Corrigendum to*** **“Quantification of CO emissions from the city of Madrid using MOPITT satellite retrievals and WRF simulations” published in Atmos. Chem. Phys., 17, 14675–14694, 2017**

**Iris N. Dekker<sup>1,2</sup>, Sander Houweling<sup>1,2,a</sup>, Ilse Aben<sup>1</sup>, Thomas Röckmann<sup>2</sup>, Maarten Krol<sup>1,2,3</sup>, Sara Martínez-Alonso<sup>4</sup>,  
Merritt N. Deeter<sup>4</sup>, and Helen M. Worden<sup>4</sup>**

<sup>1</sup>SRON Netherlands Institute for Space Research, Utrecht, the Netherlands

<sup>2</sup>Institute for Marine and Atmospheric Research Utrecht, Utrecht University, the Netherlands

<sup>3</sup>Department of Meteorology and Air Quality, Wageningen University and Research Centre, Wageningen, the Netherlands

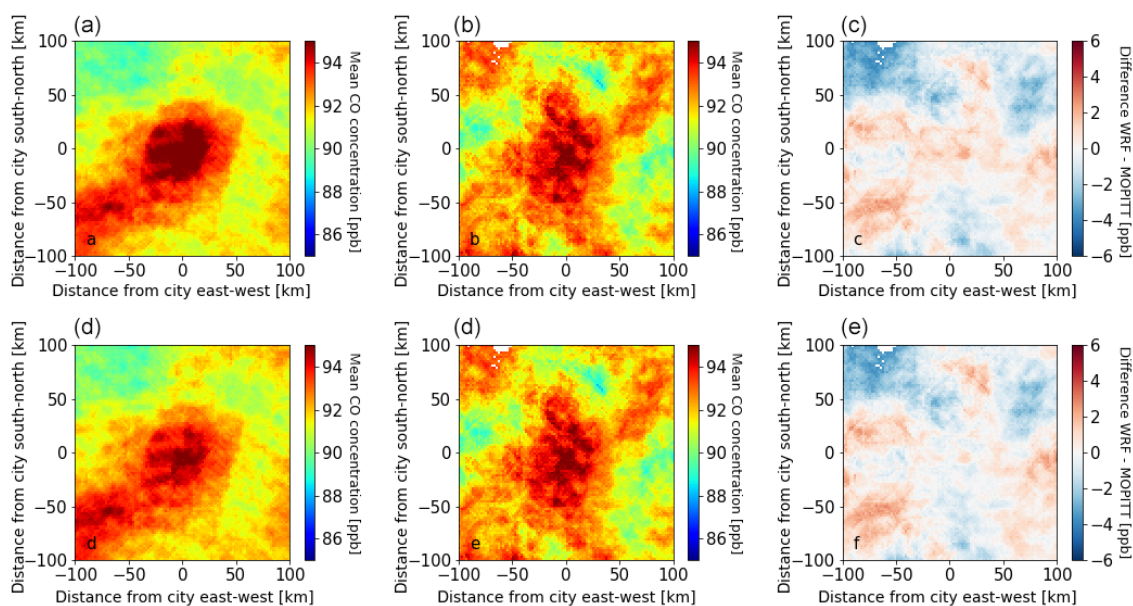
<sup>4</sup>National Center for Atmospheric Research (NCAR), Boulder, CO, USA

<sup>a</sup>currently at: Vrije Universiteit Amsterdam, Department of Earth Sciences, Amsterdam, the Netherlands

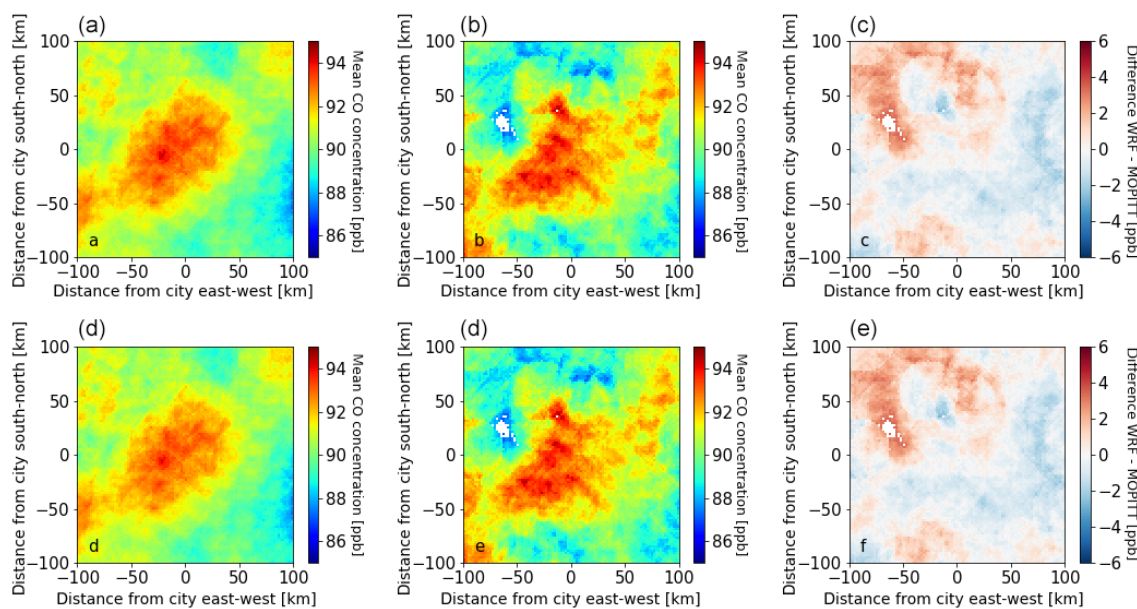
**Correspondence:** Iris N. Dekker (i.n.dekker@uu.nl)

Published: 29 May 2018

Unfortunately, during the publishing process, parts of our Figs. 9 and 10 were erroneously taken out. In the publication, only the (a), (b) and (c) parts of both figures were published, while the (d), (e) and (f) parts of both figures were lost. Also, the caption of Fig. 10 referred to Fig. 6 instead of to Fig. 9. In this corrigendum, we show the correct Figs. 9 and 10, with the corresponding corrected captions. We are very sorry for the inconvenience.



**Figure 9.** Column average mixing ratios of CO for 2002 before and after emission optimization in WRF: **(a)** only background optimization. **(b)** MOPITT V6 signal. **(c)** Difference WRF–MOPITT after background optimization. **(d)** WRF after background and emission optimization. **(e)** As **(b)**. **(f)** As **(c)** but now after background and emission optimization. The optimal emission is found to be 0.52 times the original emission.



**Figure 10.** As Fig. 9 but here for 2006: **(a)** only background optimization. **(b)** MOPITT V6 signal. **(c)** Difference WRF–MOPITT after background optimization. **(d)** WRF after background and emission optimization. **(e)** As **(b)**. **(f)** As **(c)** but now after background and emission optimization. The optimum emission is found to be 0.83 times the original emission.