

Supplement of Atmos. Chem. Phys., 17, 11655–11671, 2017  
<https://doi.org/10.5194/acp-17-11655-2017-supplement>  
© Author(s) 2017. This work is distributed under  
the Creative Commons Attribution 3.0 License.



*Supplement of*

## **Impacts of large-scale circulation on urban ambient concentrations of gaseous elemental mercury in New York, USA**

**Huiting Mao et al.**

*Correspondence to:* Huiting Mao (hmao@esf.edu)

The copyright of individual parts of the supplement might differ from the CC BY 3.0 License.

**Figure S1.** 500 hPa geopotential height maps for the climatological mean of the springs of 1980-2010, and seasonal average in each spring over 2009 – 2015.

**Figure S2.** 500 hPa geopotential height maps for the climatological mean of the summers of 1980-2010, and seasonal average in each summer over 2009 – 2014.

**Figure S3.** Sea level pressure maps for the climatological mean of the springs of 1980-2010, and seasonal average in each spring over 2009 – 2015.

**Figure S4.** Sea level pressure maps for the climatological mean of the summers of 1980-2010, and seasonal average in each summer over 2009 – 2014.

**Figure S5.** Seasonal percentile mixing ratios of CO at the Bronx site in a) spring, b) summer, c) fall, and d) winter.

**Figure S6.** Wintertime percentile mixing ratios of NO<sub>2</sub> and SO<sub>2</sub> at the Bronx site.

1980-2010 Mar - May

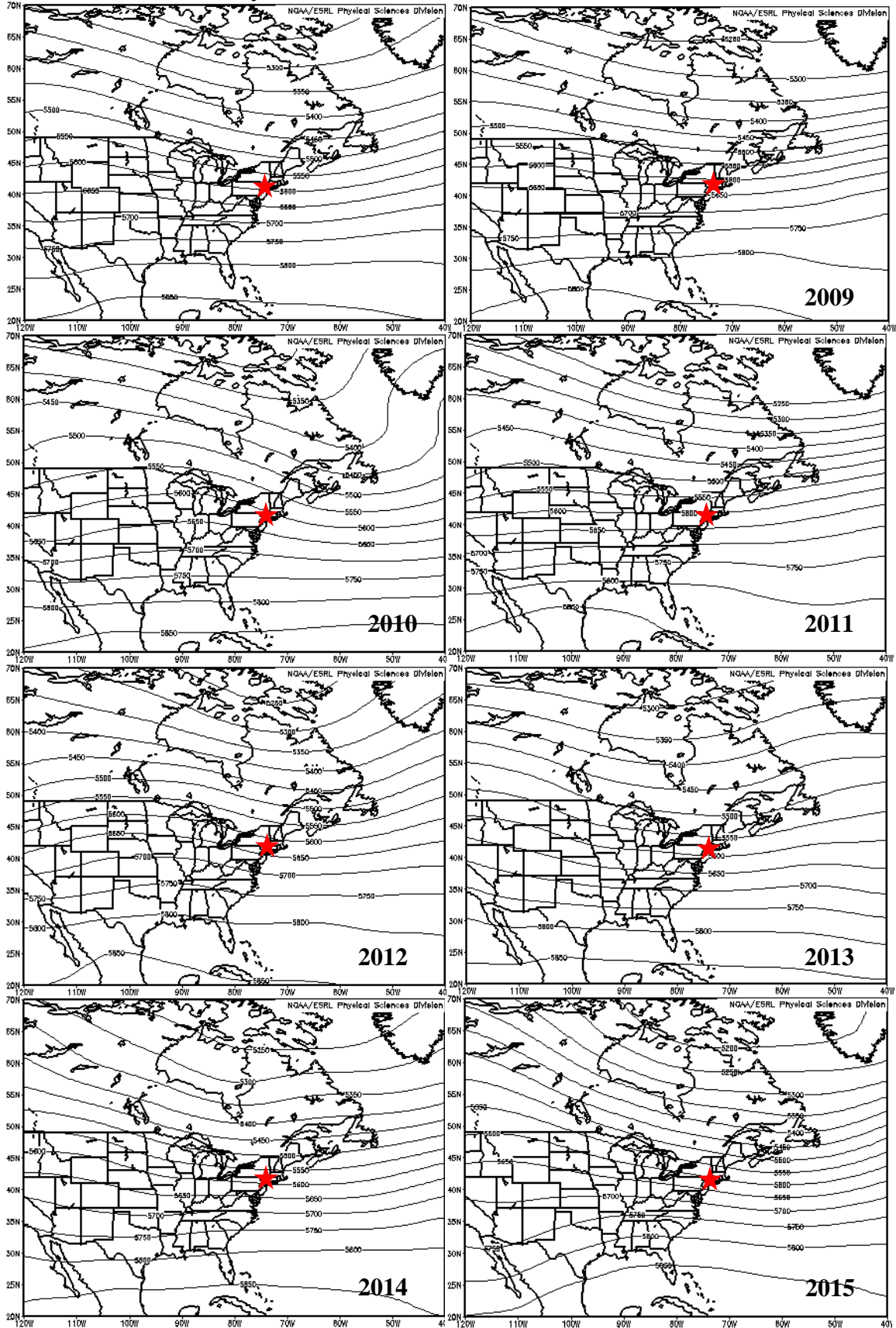
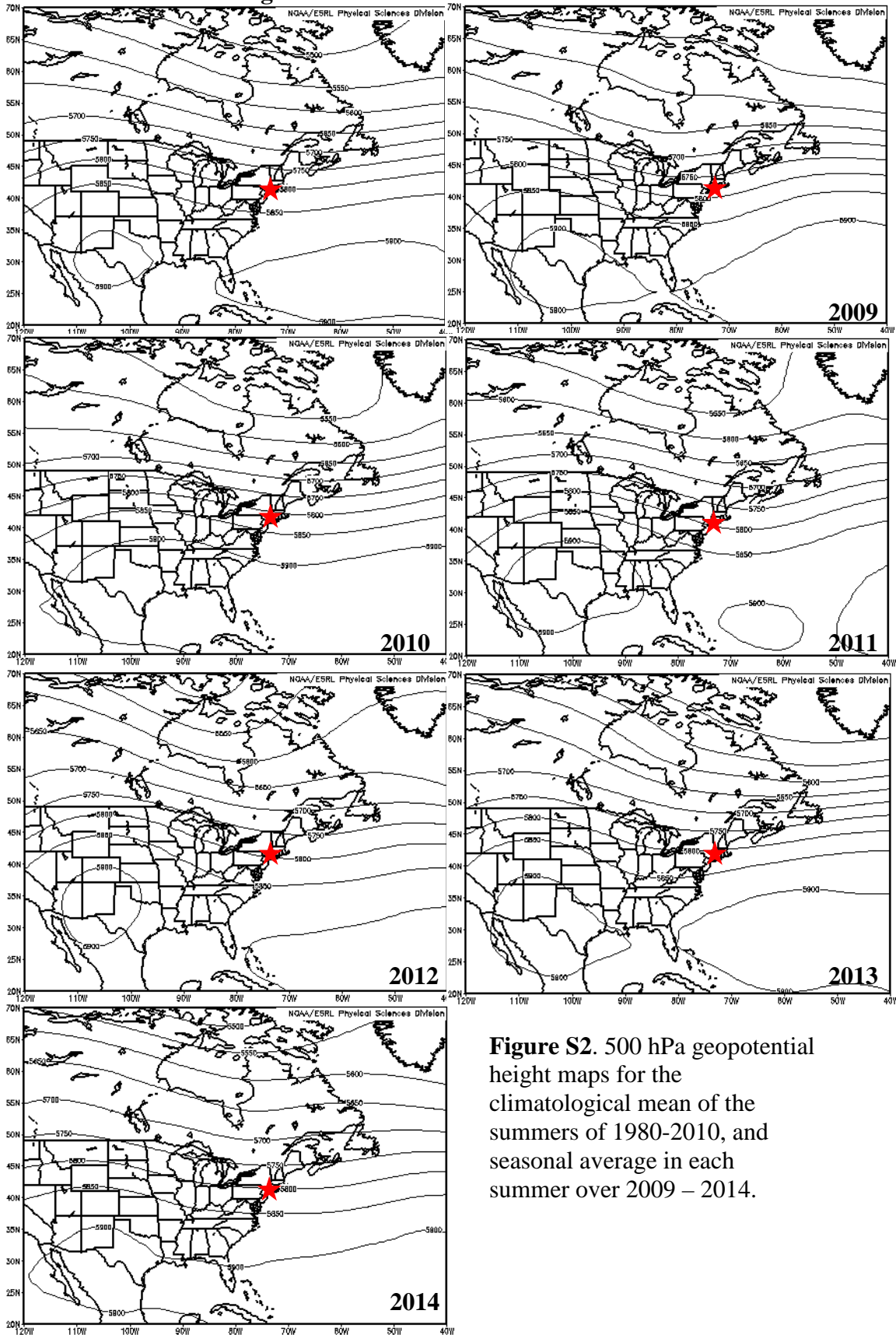


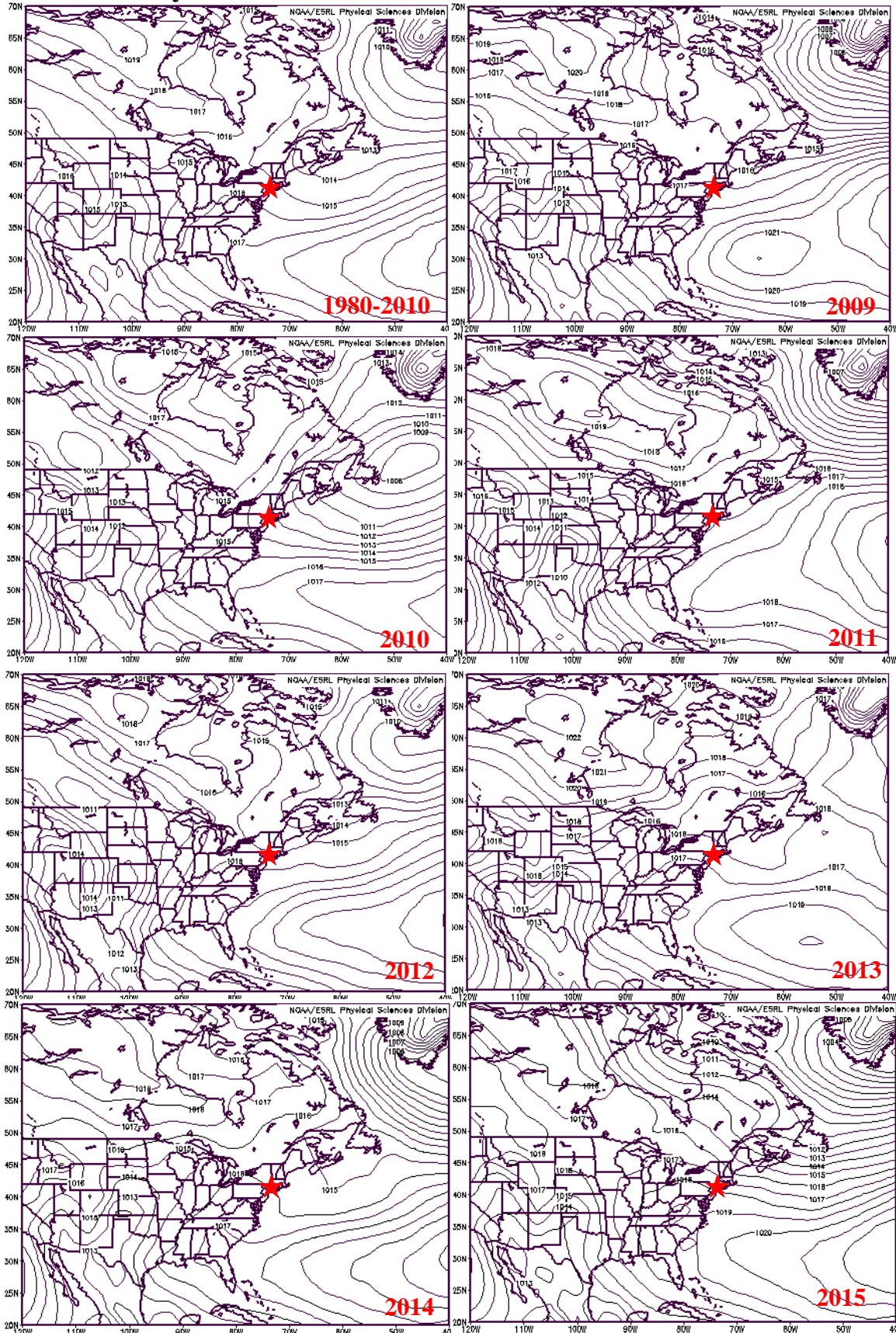
Figure S1. 500 hPa geopotential height maps for the climatological mean of the springs of 1980-2010, and seasonal average in each spring over 2009 – 2015.

1980-2010 Jun – Aug



**Figure S2.** 500 hPa geopotential height maps for the climatological mean of the summers of 1980-2010, and seasonal average in each summer over 2009 – 2014.

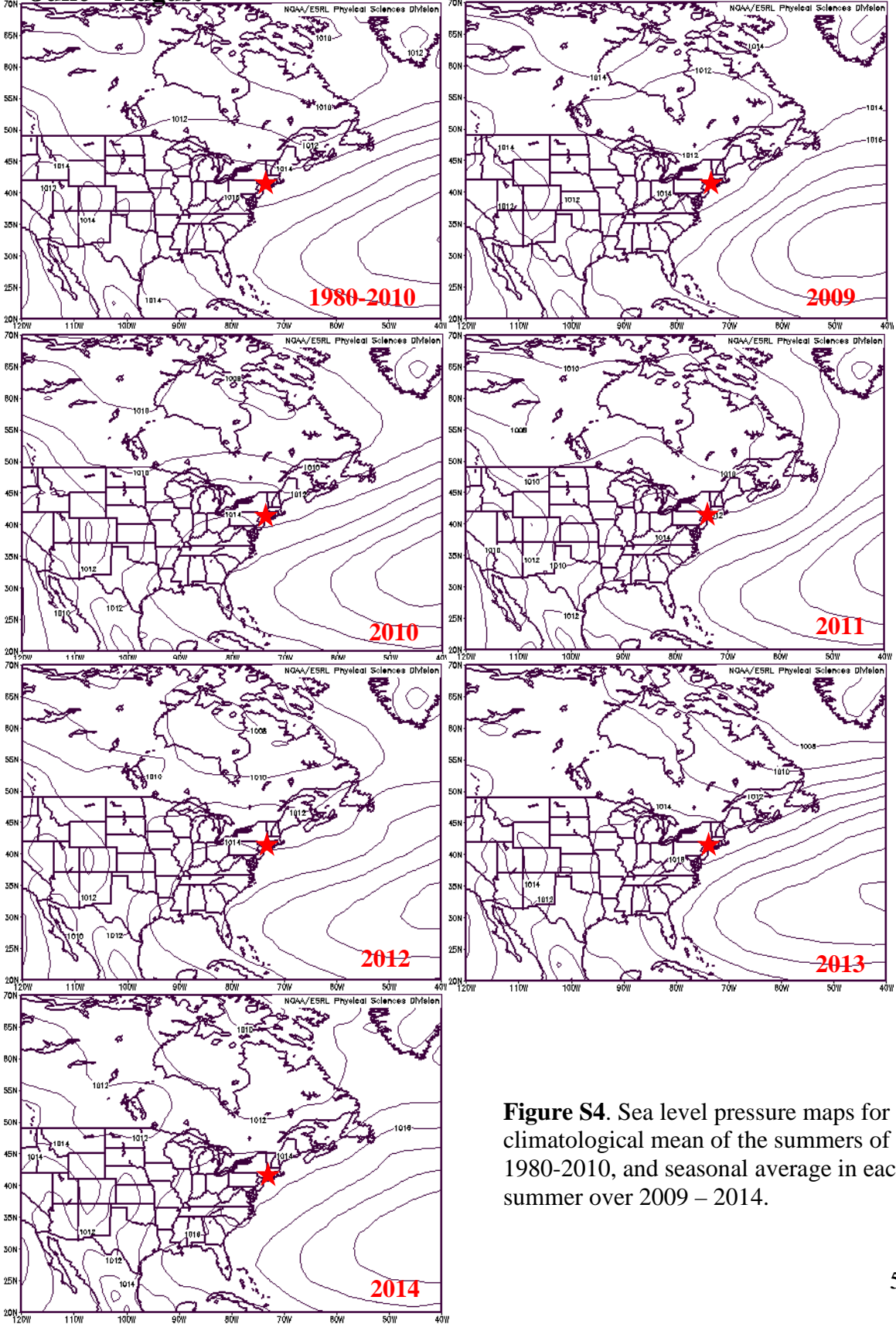
# March - May



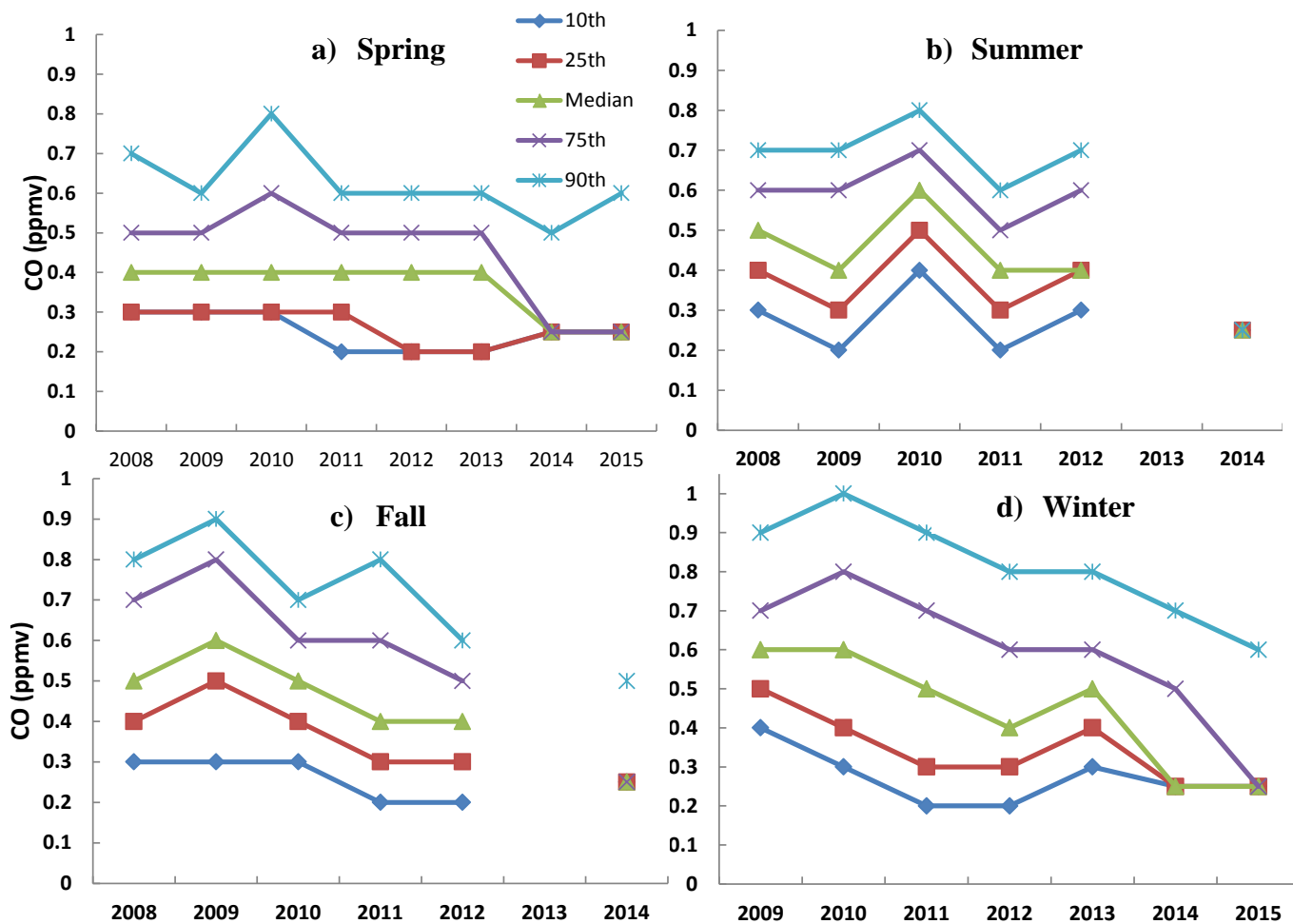
**Figure S3.** Sea level pressure maps for the climatological mean of the springs of 1980-2010, and seasonal average in each spring over 2009 – 2015.



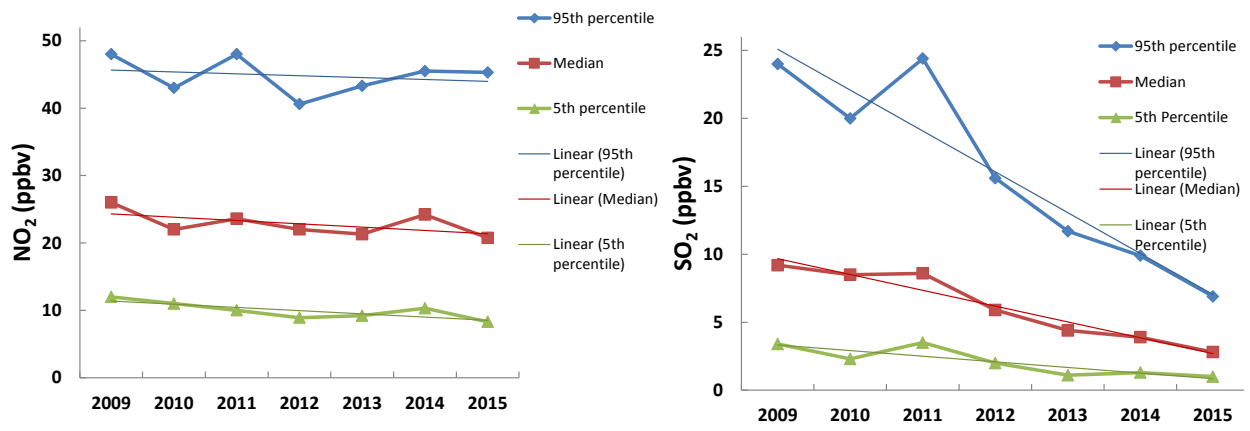
**June - August**



**Figure S4.** Sea level pressure maps for the climatological mean of the summers of 1980-2010, and seasonal average in each summer over 2009 – 2014.



**Figure S5.** Seasonal percentile mixing ratios of CO at the Bronx site in a) spring, b) summer, c) fall, and d) winter.



**Figure S6.** Wintertime percentile mixing ratios of NO<sub>2</sub> and SO<sub>2</sub> at the Bronx site.