



Surface ozone at Nam Co in the inland Tibetan Plateau: variation, synthesis comparison and regional representativeness

Xiufeng Yin^{1,2,3}, Shichang Kang^{1,3,4}, Benjamin de Foy⁵, Zhiyuan Cong^{2,4}, Jiali Luo⁶, Lang Zhang², Yaoming Ma^{2,3,4}, Guoshuai Zhang², Dipesh Rupakheti^{2,3}, and Qianggong Zhang^{2,4}

¹State Key Laboratory of Cryospheric Sciences, Northwest Institute of Eco-Environment and Resources, Chinese Academy of Sciences, Lanzhou, 730000, China

²Key Laboratory of Tibetan Environment Changes and Land Surface Processes, Institute of Tibetan Plateau Research, Chinese Academy of Sciences, Beijing, 100101, China

³University of Chinese Academy of Sciences, Beijing, 100039, China

⁴CAS Center for Excellence in Tibetan Plateau Earth Sciences, Beijing, 100085, China

⁵Department of Earth and Atmospheric Sciences, Saint Louis University, St. Louis, MO 63108, USA

⁶Key Laboratory of Semi-Arid Climate Change, Ministry of Education, Lanzhou, 730000, China

Correspondence to: Qianggong Zhang (qianggong.zhang@itpcas.ac.cn) and Shichang Kang (shichang.kang@lzb.ac.cn)

Received: 26 February 2017 – Discussion started: 27 March 2017

Revised: 18 August 2017 – Accepted: 20 August 2017 – Published: 25 September 2017

Abstract. Ozone is an important pollutant and greenhouse gas, and tropospheric ozone variations are generally associated with both natural and anthropogenic processes. As one of the most pristine and inaccessible regions in the world, the Tibetan Plateau has been considered as an ideal region for studying processes of the background atmosphere. Due to the vast area of the Tibetan Plateau, sites in the southern, northern and central regions exhibit different patterns of variation in surface ozone. Here, we present continuous measurements of surface ozone mixing ratios at Nam Co Station over a period of ~ 5 years (January 2011 to October 2015), which is a background site in the inland Tibetan Plateau. An average surface ozone mixing ratio of 47.6 ± 11.6 ppb (mean \pm standard deviation) was recorded, and a large annual cycle was observed with maximum ozone mixing ratios in the spring and minimum ratios during the winter. The diurnal cycle is characterized by a minimum in the early morning and a maximum in the late afternoon. Nam Co Station represents a background region where surface ozone receives negligible local anthropogenic emissions inputs, and the anthropogenic contribution from South Asia in spring and China in summer may affect Nam Co Station occasionally. Surface ozone at Nam Co Station is mainly dominated by natural processes involving photochemical reactions, vertical mixing and downward transport of stratospheric air mass. Model re-

sults indicate that the study site is affected differently by the surrounding areas in different seasons: air masses from the southern Tibetan Plateau contribute to the high ozone levels in the spring, and enhanced ozone levels in the summer are associated with air masses from the northern Tibetan Plateau. By comparing measurements at Nam Co Station with those from other sites on the Tibetan Plateau, we aim to expand the understanding of ozone cycles and transport processes over the Tibetan Plateau. This work may provide a reference for future model simulations.

1 Introduction

The concentration of ozone in the troposphere showed sustained growth during the 20th century due to the increased emissions of anthropogenic precursors (Cooper et al., 2014). High levels of surface ozone are currently a major environmental concern because of the harm ozone poses to health and vegetation at the surface (LRTAP, 2015; REVI-HAAP, 2013; US EPA, 2013; Mauzerall and Wang, 2001; Desqueyroux et al., 2002). In addition, ozone is a major precursor of hydroxyl (OH) and hydroperoxy (HO₂) radicals, and it controls the oxidation capacity of the atmosphere (Brasseur et al., 1999). Furthermore, as the third most impor-

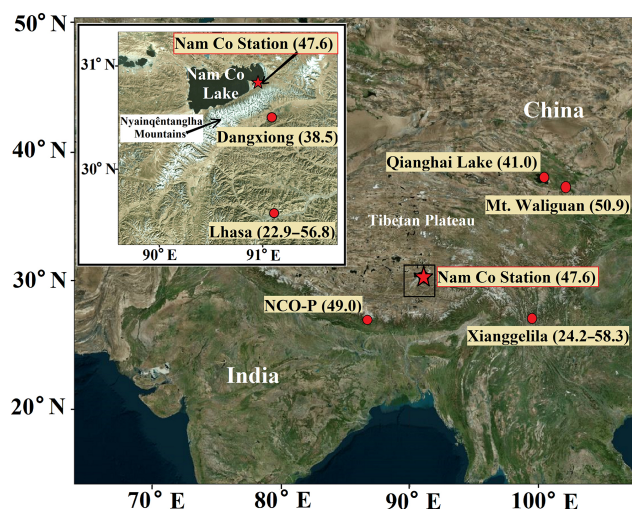


Figure 1. Geographical location of Nam Co Station and other sites in the Tibetan Plateau. Values in parentheses refer to the average or range of surface ozone in parts per billion as obtained from Cristofanelli et al. (2010), Lin et al. (2015), Shen et al. (2014), Xu et al. (2011), Ma et al. (2014), and Ran et al. (2014).

tant greenhouse gas (after carbon dioxide (CO_2) and methane (CH_4)), tropospheric ozone contributes to global warming and has an estimated global average radiative forcing of $0.40 \pm 0.20 \text{ W m}^{-2}$ at a high confidence level (Myhre et al., 2013). Average monthly and annual concentrations of tropospheric ozone are used to assess and improve global modeling results (Wild and Prather, 2006; Roelofs et al., 2003).

The origin of tropospheric ozone and its temporal variation vary from site to site. Historically, the stratosphere was initially thought to be the main source of surface (tropospheric) ozone, and a network of surface ozone monitoring sites was proposed (Junge, 1962). In the 1970s and 1980s, the effect of photochemical reactions in the troposphere on surface ozone became well recognized (Chameides and Walker, 1973; Crutzen, 1974), and photochemistry was identified as the dominant source of tropospheric ozone, as supported by models (Wu et al., 2007). Background sites can represent areas with surface ozone concentrations that are under the control of synoptic systems and are minimally affected by local anthropogenic sources. The study of surface ozone at background sites may enrich the understanding of surface ozone variation patterns.

The Tibetan Plateau ($27\text{--}45^\circ \text{N}$, $70\text{--}105^\circ \text{E}$; average elevation $\sim 4 \text{ km}$) is the highest and most extensive highland in the world and has been called the “third pole” (Yao et al., 2012). Due to its small human population and low level of industrialization, the Tibetan Plateau is an ideal natural laboratory for studying surface ozone across remote regions of the Eurasian continent. Long-term surface ozone measurements over the Tibetan Plateau have been conducted at Mt Waliguan (northeastern edge of the Tibetan Plateau) since

1994 (Xu et al., 2016); at the Nepal Climate Observatory at Pyramid (NCO-P), which has operated on the southern slope of the Himalayan region since 2006 (Cristofanelli et al., 2010); and at the Xianggelila Regional Atmosphere Background Station at the southeastern rim of the Tibetan Plateau, which has been in operation since 2007 (Ma et al., 2014). The analysis of long-term ozone mixing ratios at Waliguan Station has revealed steadily increasing concentrations over the past 2 decades (Xu et al., 2016) and has shown that maximum surface ozone occurs during the summer (Zhu et al., 2004). At NCO-P and Xianggelila, maximum surface ozone was observed in the spring (Cristofanelli et al., 2010; Ma et al., 2014). It is noteworthy that these three monitoring sites are on the boundaries of the Tibetan Plateau. In the vast inland area of the Tibetan Plateau, surface ozone measurements were only reported from Lhasa and Daxiong for 1 year and 2 years, respectively. These measurements might be less representative of regional surface ozone variation due to their proximity to human settlements and the relatively short duration of the measurements (Ran et al., 2014; Lin et al. 2015). The paucity of long-term surface ozone observations in the Tibetan Plateau, especially in the inland region, limits our understanding of the regional background ozone level and the factors that influence it in the Tibetan Plateau.

Surface ozone mixing ratios were monitored for ~ 5 years (January 2011 to October 2015) at Nam Co Station on the shore of Nam Co Lake ($30^\circ 30'\text{--}30^\circ 56' \text{N}$, $90^\circ 16'\text{--}91^\circ 03' \text{E}$). In this study, we investigated the seasonal and diurnal variations in surface ozone and its influential factors. We then evaluated surface ozone variability using combined observations over the Tibetan Plateau and beyond. Finally, we discuss the potential representativeness of surface ozone at Nam Co Station as the regional background of surface ozone in the inland Tibetan Plateau. This study expands the understanding of the concentration and variations in the surface ozone concentration and the transport processes that influence tropospheric ozone in the inland Tibetan Plateau.

2 Measurements and methods

2.1 Measurement site

The Nam Co Comprehensive Observation and Research Station (hereafter referred to as Nam Co Station; $30^\circ 46.44' \text{N}$, $90^\circ 59.31' \text{E}$; 4730 m a.s.l.) is a high-altitude scientific research center located between the southeastern shore of Nam Co Lake (1 km from the station) and the foothills of the northern Nyainqêntanglha Mountains (15 km from the station) in the southern–central region of the Tibetan Plateau (Fig. 1). Nam Co Station was established in September 2005 to monitor atmospheric conditions and enable research of the atmospheric environment in the inland Tibetan Plateau (Kang et al., 2011). Nam Co Station is located in a natural flat field ($220 \times 100 \text{ m}$) and records meteorological, ecolog-

ical, and atmospheric data, including surface ozone mixing ratios (Cong et al., 2007; Li et al., 2007; Huang et al., 2012; Liu et al., 2015; de Foy et al., 2016b). The climate at Nam Co Station is dry and cold, representing a typical climate regime in a high mountain region. The solar radiation at Nam Co Station is stronger than that at other sites at the same latitude due to the high altitude and thin air. Three synoptic systems influence the atmosphere at Nam Co Station: the South Asian anticyclone (which controls the 100 hPa upper layer), a subtropical high-pressure system, and southeasterly warm and wet airflow (during the monsoon season) (Qiao and Zhang, 1994). No major anthropogenic sources of atmospheric emissions exist near Nam Co Station. The urban area closest to the station is Dangxiong County, which is located on the southern slopes of the Nyainqêntanglha Mountain Range approximately 60 km south of Nam Co. Dangxiong is lower in elevation than Nam Co Station by more than 500 m. No large industries are located within 100 km of Nam Co Station. Local traffic is limited to a small number of vehicles traveling through the area during the tourism season.

2.2 Measurements: surface ozone and meteorology

The surface ozone mixing ratios were measured using a UV photometric instrument (Thermo Environmental Instruments, USA, Model 49i), which uses the absorption of radiation at 254 nm and has a dual cell design. The ambient air inlet (Teflon tube) was 1.5 m above the roof and 4 m above the ground. The instrument has zero noise, 0.25 parts per billion (ppb) rms (root mean square error) (60 s average time), a low detection limit of 0.5 ppb, a precision of 1 ppb and a response time of 20 s (10 s lag time). The instrument was calibrated using a 49i-PS calibrator (Thermo Environmental Instruments, USA) before measurements and during the monitoring periods, and yearly instrument calibrations were performed against the Standard Reference Photometer (SRP) maintained by the WMO World Calibration Centre in Switzerland (EMPA). Field operators checked the instruments and created a monitoring log file every day. Due to the extreme winter weather that occurs at Nam Co Station, measurements were intermittently interrupted because of unstable power supply (due to damage to the electrical wires caused by strong winds) and equipment maintenance. All data displayed in this study are in UTC + 8 format (Beijing Time, BJT), and solar noon at Nam Co Station occurs at 13:56 UTC + 8.

Measurements of temperature, relative humidity, wind speed, wind direction and downward shortwave radiation (SWD) were conducted at Nam Co Station using an automatic weather station system (Milos520, Vaisala) and a radiation measurement system (CNR-1) (Ma et al., 2008).

2.3 Meteorological simulations

Backward trajectories and clusters were calculated using NOAA-HYSPLIT (HYbrid Single-Particle Lagrangian Integrated Trajectory) model (Draxler and Rolph, 2003; <http://ready.arl.noaa.gov/HYSPLIT.php>) using TrajStat, which is a free software plug-in of MeteInfo (Wang, 2014). Gridded meteorological data for backward trajectories in HYSPLIT and the planetary boundary layer height (PBLH) were obtained from the Global Data Assimilation System (GDAS-1) operated by the US National Oceanic and Atmospheric Administration (NOAA) with $1^\circ \times 1^\circ$ latitude and longitude horizontal resolution and 23 vertical levels from 1000 to 20 hPa (<http://www.arl.noaa.gov/gdas1.php>). The backward trajectory arrival height in HYSPLIT was set to 500 m (500, 1000 and 1500 m were tested as arrival heights, and there was no obvious difference in the results) above the surface and the total run times was 120 h for each backward trajectory with time intervals of 3 h throughout the whole measurement period. The vertical motion was calculated using the default model selection, which used the meteorological model's vertical velocity fields. Angle distance (Sirois and Bottenheim, 1995) was selected to calculate clusters in this study.

To identify the impact of different air masses in a multiple linear regression model, WRF-FLEXPART (Stohl et al., 2005; Brioude et al., 2013) was used to obtain the clusters of particle trajectories reaching Nam Co Station. Overall, 1000 particles were released per hour in the bottom 100 m surface layer above Nam Co Station and were tracked in backward mode for 4 days (de Foy et al., 2016a). Residence time analysis (RTA) (Ashbaugh et al., 1985) was used to create gridded fields representing the dominant transport paths of air masses impacting the measurement site (Wang et al., 2016, 2017). A *k*-means algorithm was used to classify the transport patterns into clusters (Wang et al., 2016). Six clusters were found to represent the dominant flow patterns to Nam Co Station simulated using WRF-FLEXPART.

A tracer for stratospheric ozone incursions at the measurement site was obtained using the CAMx (Comprehensive Air-quality Model with eXtensions) v6.30 model (Ramboll Environ, 2016). The model initial and boundary conditions were obtained from ERA-Interim ozone fields, retaining only concentrations above 80 ppb and higher than 400 hPa. CAMx simulations were performed using the WRF medium and fine domains (domains 2 and 3) in nested mode for the full 4-year time series. In order to serve as a tracer for direct transport, there was no chemistry in the model and ozone was treated as a passive tracer. The resulting time series of the tracer concentration at the measurement site was used as input in the multi-linear regression model. This is similar to the procedure described in de Foy et al. (2014) to estimate the impact of the free troposphere on surface reactive mercury concentrations.

The ECMWF ERA-Interim data (Dee et al., 2011) were used to analyze the upper-troposphere and lower-stratosphere

structures of the meridional cross section over Nam Co Station.

2.4 Multiple linear regression model

A multiple linear regression (MLR) model was used in this study to quantify the main factors affecting the hourly surface ozone concentrations. The method follows the description provided in de Foy et al. (2016a and c). The inputs to the MLR model include meteorological parameters (wind speed, temperature and humidity), interannual variation factors, seasonal factors, diurnal factors, WRF boundary layer heights, WRF-FLEXPART trajectory clusters and the CAMx stratospheric ozone tracer.

Tests were performed with different variables and averaging times for the meteorological parameters, including hourly data, running averages of 3, 8 and 24 h and smoothed variables using Kolmogorov–Zurbenko filters (Rao et al., 1997). The variables to be included in the regression were obtained iteratively. At each iteration, the variable leading to the greatest increase in the square of the Pearson correlation coefficient was added to the inputs as long as the increase was greater than 0.005.

The regression model is described by the following equations (Eqs. 1, 2, 3):

$$\begin{aligned} \log(\text{O}_3 + 10) = & \sum_{\text{yr}=2011}^{2014} \alpha_{\text{yr}} t_{\text{yr}} + f(\text{seasons}) + f(\text{diurnal}) \\ & + \sum_{i=1}^6 \alpha_{\text{cli}} t_{\text{cli}} + \sum_{i=1}^5 \alpha_{\text{PBLHi}} t_{\text{PBLHi}} \\ & + \sum_{j=1}^4 \sum_{i=5}^5 \alpha_{\text{WS}_{i,j}} t_{\text{WS}_{i,j}} + \alpha_{\text{st}} \log(\text{Strat.Tracer}) \\ & + \alpha_{\text{bkg}} + \epsilon, \end{aligned} \quad (1)$$

$$\begin{aligned} f(\text{seasons}) = & \alpha_{T_{\text{SS}}} T'_{\text{SS}} + \alpha_{T_{\text{SS}} q'_{\text{SS}}} + \sum_{j=1}^2 \alpha_{sj} \sin\left(\frac{2\pi j t}{365.25}\right) \\ & + \alpha_{cj} \cos\left(\frac{2\pi j t}{365.25}\right), \end{aligned} \quad (2)$$

$$\begin{aligned} f(\text{diurnal}) = & \alpha_{T_{\text{DU}}} T'_{\text{DU}} + \alpha_{q_{\text{DU}}} q'_{\text{DU}} \\ & + \sum_{i=1-11, 14-24} \alpha_{\text{hri}} t_{\text{hri}}. \end{aligned} \quad (3)$$

α represents the regression coefficients that are determined by the model. O_3 is the hourly surface ozone concentration. Time vectors t are used to represent different temporal terms and vary between 0 and 1. For example, t_{yr} represents the variation from year to year. This means that t_{2011} is 1 during 2011 and 0 otherwise. The air mass clusters derived from WRF-FLEXPART are represented using t_{cli} : t_{cli} is 1 during cluster 1 and 0 otherwise.

The impact of winds and mixing heights on O_3 is expected to be nonlinear. We therefore separated the data into quartiles

and included a regression factor for each of the five points separating the quartiles (0, 25, 50, 75 and 100 %). For the boundary layer height, we have five time series represented by t_{PBLHi} . Piecewise linear interpolation is used to give them a value of 1 at the edge of the quartile, which then decreases to 0 by the next quartile. As an example, t_{PBLH1} is 1 for the times when the mixing height is at the data minimum, and it is 0 when the mixing height is above the first quartile. At times when the mixing height is between these two levels, t_{PBLHi} varies linearly.

For wind speed and direction, we performed the piecewise interpolation in two dimensions, with five factors for the wind speed and four factors for the wind direction (because the two extremes are the same: 0 and 360°). $t_{\text{WS1},1}$ represents times when the wind speeds are in the bottom quartile ($i = 1$) and when the wind direction is from the north ($j = 1$).

We used the natural logarithm of O_3 concentrations offset by 10 ppb to approximate a normal distribution while reducing the long tail in the transformed variable that would be caused by taking the logarithm of low O_3 concentrations. The background term is included as α_{bkg} and the residual between the regression model and the measurement time series is ϵ .

T is the temperature, and q is the specific humidity. Both are normalized linearly as follows: $T' = (T - \mu(T))/\sigma(T)$. Because we were interested in identifying separately the seasonal and diurnal variation, we used a Kolmogorov–Zurbenko filter to separate T and q into a seasonal component (T_{SS} and q_{SS}) and a diurnal component (T_{DU} and q_{DU}) (Rao et al., 1997). The seasonal component used five passes of a 13-point moving average, and the diurnal component was the difference between the hourly and the seasonal time series. The seasonal terms also include harmonic terms with a 12-month and 6-month period as described in de Foy et al. (2016a).

The diurnal term includes diurnal temperature and specific humidity. In addition, we included a time series term for each hour of the day (t_{hri}) except for 12:00 and 13:00, which are taken to be reference hours.

The “Strat.Tracer” was simulated using the CAMx model as described in Sect. 2.3. During testing, the best fit in the regression model was found using the seasonal component of the stratospheric tracer obtained from the Kolmogorov–Zurbenko filter in the same way as T_{SS} and q_{SS} .

Because the results of least-squares methods are sensitive to outliers, an iteratively re-weighted least-squares (IRLS) procedure was used to screen them out. Measurement times when the model residual was greater than 2 standard deviations of all the residuals were excluded from the analysis. This was repeated iteratively until the method converged on a stable set of outliers (de Foy et al., 2016b).

To estimate the uncertainty in the results, we used block-bootstrapping with a 24 h block length, as described in de Foy et al. (2015). Overall, 100 realizations of the final model were performed. For each model realization, days were selected

randomly with replacement from the full set of days until a dataset containing the same total number of days was obtained. This accounts for both measurement errors and model errors as the instrument errors are assumed to be uncorrelated and model errors are unlikely to be correlated beyond a couple of days. The uncertainty in the results can then be estimated by calculating the standard deviation of the parameters obtained from the 100 model realizations.

When presenting results of the regression analysis, we obtained a single time series for each group by summing the individual parts. For example to estimate the impact of the WRF-FLEXPART clusters we make a sum of the six t_{cli} time series multiplied by the corresponding regression factors α_{cli} . For a log transformed regression, the time series of each group can be interpreted as a scaling factor on the background term (α_{bkg}) and expressed as a percentage change. For a linear regression model, the time series can be expressed as a linear departure from the mean in the units of the measurements (ppb).

In all, there were 67 free parameters (α) in the regression model that were used to fit 27 310 data points.

2.5 Potential source contribution function

The potential source contribution function (PSCF) assumes that back trajectories arriving at times of higher mixing ratios likely point to the more significant pollution directions (Ashbaugh et al., 1985). PSCF has been applied in previous studies to locate air masses associated with high levels of surface ozone for different sites (Kaiser et al., 2007; Dimitriou and Kassomenos, 2015). In this study, PSCF was calculated using trajectories that were calculated by HYSPLIT. The top of the model was set to 10 000 m. The PSCF values for the grid cells in the study domain were based on a count of the trajectory segment (hourly trajectory positions) that terminated within each cell (Ashbaugh et al., 1985). Let n_{ij} be the total number of endpoints that fall in the ij th cell during whole the simulation period. Let m_{ij} represents the number of points in the same cell with arrival times at the sampling site that correspond to surface ozone mixing ratios higher than a set criterion. In this study, we calculated the PSCF based on trajectories corresponding to concentrations that exceeded the mean level of surface ozone during measurement. The PSCF value for the ij th cell was then defined as

$$\text{PSCF}_{ij} = \frac{m_{ij}}{n_{ij}}.$$

The PSCF value can be interpreted as the conditional probability that the ozone mixing ratios at the measurement site are greater than the mean mixing ratios if the air parcel passes through the ij th cell before arriving at the measurement site. Cells with high PSCF values are associated with the arrival of air parcels at the receptor site that have pollutant mixing ratios that exceed the criterion value. These cells are indicative

Table 1. Statistical summary of surface ozone at Nam Co Station from 2011 to 2015.

Year (valid time during whole year %)	Ozone (ppb)	Range (ppb)
2011 (75.25 %)	46.0 ± 12.1	10.1–94.7
2012 (90.30 %)	48.1 ± 11.4	14.3–91.5
2013 (75.90 %)	47.5 ± 12.3	15.5–89.7
2014 (70.05 %)	47.5 ± 10.6	14.9–90.8
2015 (66.21 %)	48.9 ± 12.0	17.3–94.7
Total	47.6 ± 11.6	10.1–94.7

of areas of “high potential” contributions for the chemical constituent.

Identical PSCF_{ij} values can be obtained from cells with very different counts of back-trajectory points (e.g., grid cell A with $m_{ij} = 5000$ and $n_{ij} = 10000$ and grid cell B with $m_{ij} = 5$ and $n_{ij} = 10$). In this extreme situation grid cell A has 1000 times more air parcels passing through than grid cell B. Because of the sparse particle count in grid cell B, the PSCF values are more uncertain. To account for the uncertainty due to low values of n_{ij} , the PSCF values were scaled by a weighting function W_{ij} (Polissar et al., 1999). The weighting function reduced the PSCF values when the total number of endpoints in a cell was less than approximately 3 times the average value of the end points per cell. In this case, W_{ij} was set as follows:

$$W_{ij} \begin{cases} 1.00 & n_{ij} > 3N_{\text{ave}} \\ 0.70 & 3N_{\text{ave}} > n_{ij} > 1.5N_{\text{ave}} \\ 0.42 & 1.5N_{\text{ave}} > n_{ij} > N_{\text{ave}} \\ 0.05 & N_{\text{ave}} > n_{ij}, \end{cases}$$

where N_{ave} represents the mean n_{ij} of all grid cells. The weighted PSCF values were obtained by multiplying the original PSCF values by the weighting factor.

3 Surface ozone behavior at Nam Co Station

3.1 Mean mixing ratio

The mean surface ozone mixing ratio at Nam Co Station during the entire observational period was 47.6 ± 11.6 ppb (mean \pm standard deviation), and the yearly average surface ozone mixing ratio was between 46.0 and 48.9 ppb (Table 1). During the whole monitoring period, the lowest hourly mixing ratio at Nam Co Station was 10.1 ppb, which was observed on 3 December 2011; and the highest hourly mixing ratio was 94.7 ppb, which was recorded on 11 June 2011, resulting in a range of ~ 85 ppb.

The mean surface ozone mixing ratio at Nam Co Station was within the reference range reported for the Himalayas and the Tibetan Plateau; it was higher than the ratios for the

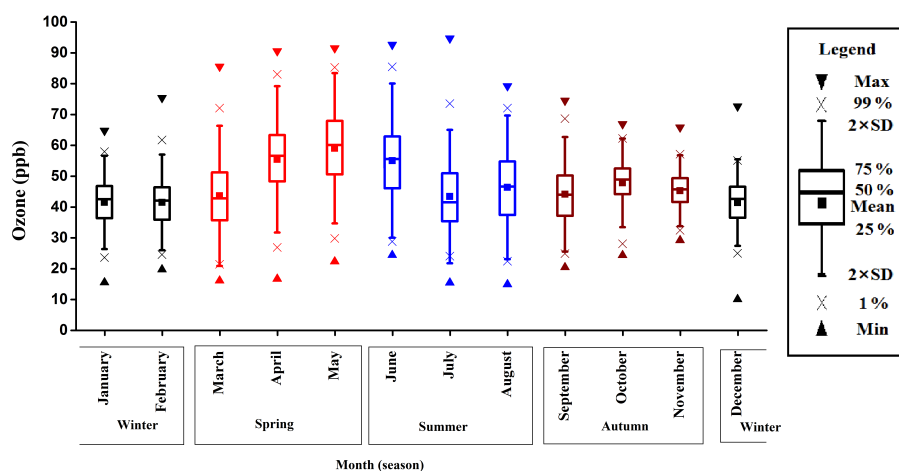


Figure 2. Monthly average and statistical parameters of surface ozone at Nam Co Station during the whole measurement period (spring (MAM) in red; summer (JJA) in blue; autumn (SON) in dark red; winter (DJF) in black).

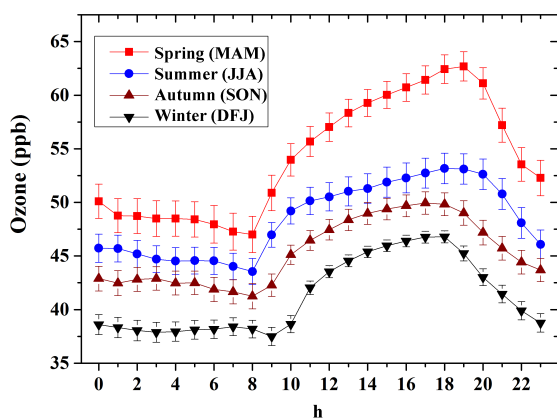


Figure 3. Diurnal profiles of average hourly surface ozone at Nam Co Station by seasons. Error bars show the 95 % confidence intervals.

two nearest urban sites – Lhasa (Ran et al., 2014) and Daxiong (Lin et al., 2015) – and was comparable to of two sites at the edge of the Tibetan Plateau: Waliguan Station (Xu et al., 2011) and NCO-P (5079 m) (Cristofanelli et al., 2010) (see Fig. 1 for station locations). Surface ozone mixing ratios at Nam Co as well as at other sites over the Tibetan Plateau were generally higher than the range of 20–45 ppb measured at background sites in the midlatitudes of the Northern Hemisphere. This was in agreement with the higher concentrations typically observed at sites located in the free troposphere (Vingarzan, 2004).

3.2 Seasonal pattern

Every month considered in this study had more than 400 h of available data (valid data for each month > 56 %). The surface ozone concentrations at Nam Co Station experienced

similar annual cycles during each of the 5 years of measurements with slight variations (Fig. S1 in the Supplement). The monthly average mixing ratios of ozone from 2011 to 2015 at Nam Co Station showed clear seasonal features (Fig. 2): (1) remarkably high values in the late spring–early summer; (2) low values in the winter; (3) little fluctuation during the remainder of the year except for the late spring–early summer; and (4) a small peak around October in the second half of the year. The three winter months (December, January and February) had the lowest monthly mean surface ozone mixing ratios (41.0 ± 7.6 – 41.5 ± 7.0 ppb) of the year, with variations smaller than 0.5 ppb. The mean monthly surface ozone mixing ratios increased from February to March by ~ 3.5 ppb, and a sharp increase from 44.5 ± 10.4 to 54.7 ± 11.6 ppb occurred in March–April. The monthly mean mixing ratios remained above 54 ppb for the next 3 months (April, May and June), with the highest monthly mean mixing ratios occurring in May (58.6 ± 12.2 ppb). After a large decrease in June–July (from 55.5 ± 12.7 to 44.9 ± 11.9 ppb), the monthly mean mixing ratios of surface ozone during the second half of the year remained at low levels (ranging from 41.5 ± 7.0 to 48.0 ± 8.6 ppb), albeit with a small increase in October.

3.3 Diurnal variation

The diurnal cycles at Nam Co Station showed low ozone mixing ratios at night and high ozone mixing ratios during the day, with a unimodal pattern. After a rapid increase of 6 ppb during the morning (08:00–11:00), the surface ozone mixing ratio at Nam Co continued to increase until reaching a maximum at 18:00 (53.2 ± 10.9 ppb); it then decreased continuously to its lowest level at 08:00 the next day. Field observations revealed that the ozone mixing ratios reached an average of 50.6 ± 10.9 ppb during the day (09:00–20:00)

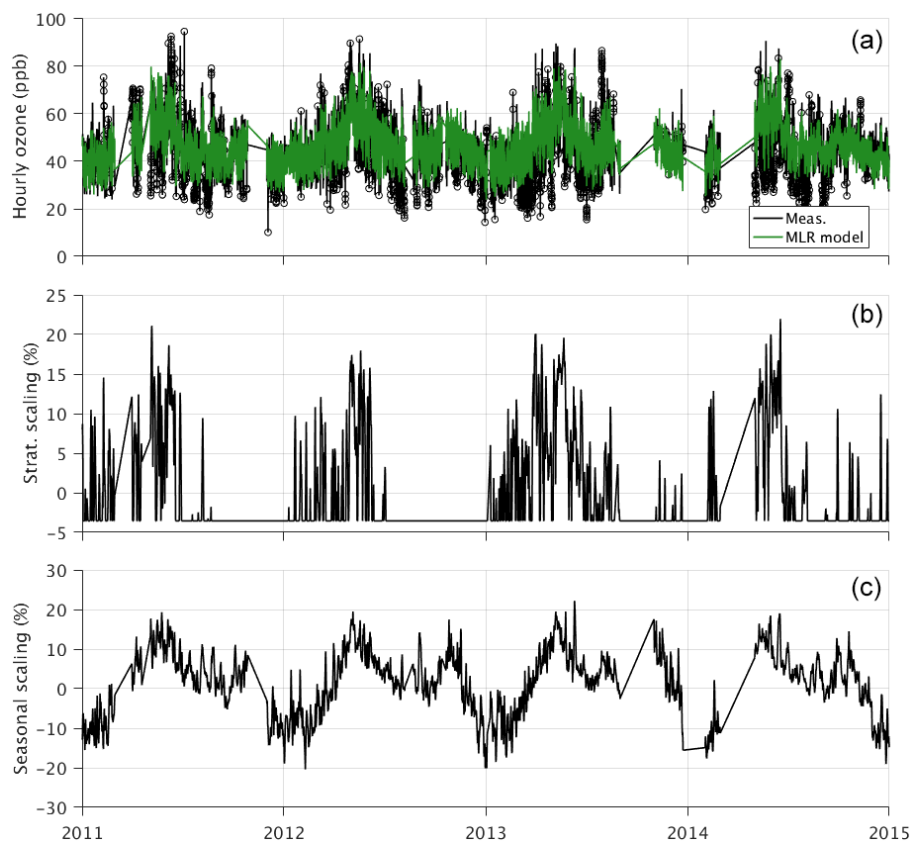


Figure 4. (a) Surface hourly measurements of ozone at Nam Co (black) and multi-linear regression (MLR) model fit (green). Outliers rejected by the iteratively re-weighted least-squares procedure are shown as circles. (b) Impact of the CAMx stratospheric tracer on surface ozone concentration in the regression model expressed as a percentage change relative to the model average. (c) Impact of the seasonal factor (Eq. 2) on surface ozone concentration.

and an average of 44.6 ± 11.2 ppb during the night and early morning (21:00–08:00).

All seasons displayed similar diurnal ozone mixing ratio cycles at Nam Co Station (Fig. 3). Mixing ratios went from low levels at night to high levels during the daytime. The diurnal profile was generally characterized by a later shift from low to high concentrations in the winter than in the rest of the year, most likely as a result of the later time of sunrise. Relatively large diurnal amplitudes were observed in the spring, with much smaller diurnal amplitudes observed during the summer, the autumn and the winter.

4 Factors affecting surface ozone variation at Nam Co Station

4.1 Impact factors on seasonal variation

The regression model had 27 310 hourly data points of which 26 005 were retained by the IRLS procedure; see Table 2. The correlation coefficient (r) was 0.77 for the entire time series and 0.81 without the outliers. The time series of the model is shown in Fig. 4 and scatterplots between the mea-

surements and the model are shown in Fig. S2. Note that because stratospheric intrusion contributions are seasonal, there was covariance between the stratospheric tracer and the seasonal signal. Uncertainties in the estimate of the contribution from one of these therefore impacted the estimate from the other.

As described in Sect. 2.4, we combined the time series in the regression model into seven distinct groups and present the results for these merged factors. In the log-transformed model, the time series for each group corresponds to a scaling factor that is applied to the baseline ozone concentration. This is shown in Fig. 4 for the stratospheric tracer and for the seasonal scaling. The regression model suggests that both stratospheric transport and seasonal variation can lead to enhancements in hourly concentrations of up to 20 % of the baseline level of ozone.

The contribution of each group to the O_3 variation can be calculated as the variance of the time series for that group divided by the sum of the variances for all the groups shown in Table 2 and described in Eqs. (1)–(3). The uncertainty of the results was calculated using the standard deviation of the 100 realizations of the model using block-bootstrapping.

Table 2. Multi-linear regression model for hourly ozone (2011–2014) for three different models and the contribution of groups of input variables to the variance (%) of the ozone time series. PV: potential vorticity.

Model A: log-transformed model of ozone concentration using CAMx stratospheric tracer to identify STE.

Model B: linear-transformed model of ozone concentration using CAMx stratospheric tracer to identify STE.

Model C: linear-transformed model of ozone concentration using ERA-Interim potential vorticity to identify STE.

A		B		C	
Number of all hourly data	27 310	Number of all hourly data	27 310	Number of all hourly data	27 310
Number of IRLS hourly data	26 005	Number of IRLS hourly data	25 934	Number of IRLS hourly data	25 985
r (all hourly data calculated)	0.77	r (all hourly data calculated)	0.75	r (all hourly data calculated)	0.75
r (IRLS hourly data calculated)	0.81	r (IRLS hourly data calculated)	0.79	r (IRLS hourly data calculated)	0.80
CAMx stratospheric tracers	18.2 %	CAMx stratospheric tracers	12.5 %	PV	5.8 %
WRF-FLEXPART clusters	6.5 %	WRF-FLEXPART clusters	6.8 %	WRF-FLEXPART clusters	6.4 %
Local winds	31.0 %	Local winds	28.6 %	Local winds	29.4 %
Seasonal signal	35.3 %	Seasonal signal	44.2 %	Seasonal signal	52.1 %
Diurnal signal	7.4 %	Diurnal signal	6.7 %	Diurnal signal	5.7 %
Annual signal	1.5 %	Annual signal	0.7 %	Annual signal	0.5 %
WRF PBLH	0.1 %	WRF PBLH	0.4 %	WRF PBLH	0.2 %

The stratospheric ozone tracer from the CAMx model contributed 18.2 ± 2.6 % of the ozone variance at the site, and the WRF-FLEXPART wind transport clusters (Fig. S3) contributed 6.5 ± 1.7 %. Local winds accounted for 31.0 ± 1.8 %, seasonal variations (including the 12- and 6-month sine and cosine terms, and the seasonal temperature and humidity terms) accounted for 35.3 ± 3.0 %; diurnal signals (including the hourly terms and the diurnal temperature and humidity signals) accounted for 7.4 ± 0.8 %; the annual signal for 1.5 ± 0.5 % and the WRF boundary layer height accounted for 0.1 ± 0.1 % of the variance. The uncertainties in the model regression results are shown graphically in Fig. S4. The histograms show variation in the contribution to ozone variance for each group based on the 100 realizations of the model. Taking the CAMx tracer as an example, the model suggests that this term contributes 17.7 % of the O_3 variance on average, but the results range from 12 to 24 % and have a standard deviation of 2.6 %. The scatterplots show the covariance between the model estimates for different groups. Most groups do not covary, and hence there is no correlation between the x and y axis and the correlation coefficients are low. For example, the contribution from the WRF-FLEXPART clusters does not covary with the CAMx tracer, and $r^2 = 0.03$. In contrast, the seasonal signal covaries with the CAMx tracer ($r^2 = 0.5$) which suggests that there is an increased uncertainty in the estimates for these terms and that changes in estimates for the seasonal signal will lead to changes in the estimates for the CAMx tracer. In this case, this is because stratospheric intrusions occur in spring, and hence there is an inescapable correlation between the two groups.

As a separate test, the regression model was performed with linear transformations instead of log transformations. The model is similar to Eq. (1) but with the logarithm terms replaced by a linear normalization for the ozone concentration and for the stratospheric tracer. The advantage of this

model is that the results can be interpreted as ozone enhancements from each group in ppb. The results are shown in Table 2. Although the fit was not as good, the results were remarkably similar. The contribution of the stratospheric tracer was lower, mainly because there were individual peaks which had a larger influence in the linearly transformed model than in the log-transformed model. Figure S5 (corresponding to Fig. 4) shows the linear results. Although the mean contribution of the stratospheric tracer to surface ozone concentrations was only 1 ppb over the entire time series, it can reach above 20 ppb during specific events in the spring.

Potential vorticity from the ERA-Interim model at 500 hPa, which was near the surface at Nam Co, was not found to contribute to the simulated ozone time series. However, at 350 hPa a positive correlation was found. The correlation was even larger if we took the potential vorticity at 350 hPa above the Himalayas. Total-column ozone correlated more weakly with surface ozone than potential vorticity and was not found to improve the regression model. As for potential vorticity, the correlation coefficient for total-column ozone was higher above the Himalayas than at the measurement site. Figure S6 shows the 24 h running average of the surface ozone and the stratospheric tracer at the measurement site and the total-column ozone and the potential vorticity from ERA-Interim above the Himalayas.

We performed a separate model run where we replaced the stratospheric tracer with the potential vorticity time series at 350 hPa above the Himalayas. The model found the best fit using the Kolmogorov–Zurbenko seasonally filtered time series of potential vorticity. The model had a slightly lower correlation coefficient and lower contribution of the potential vorticity tracer (5.8 %) than the model using the CAMx stratospheric tracer. This suggests that the CAMx stratospheric tracer is a better indicator of stratospheric ozone incursions than the time series of potential vorticity.

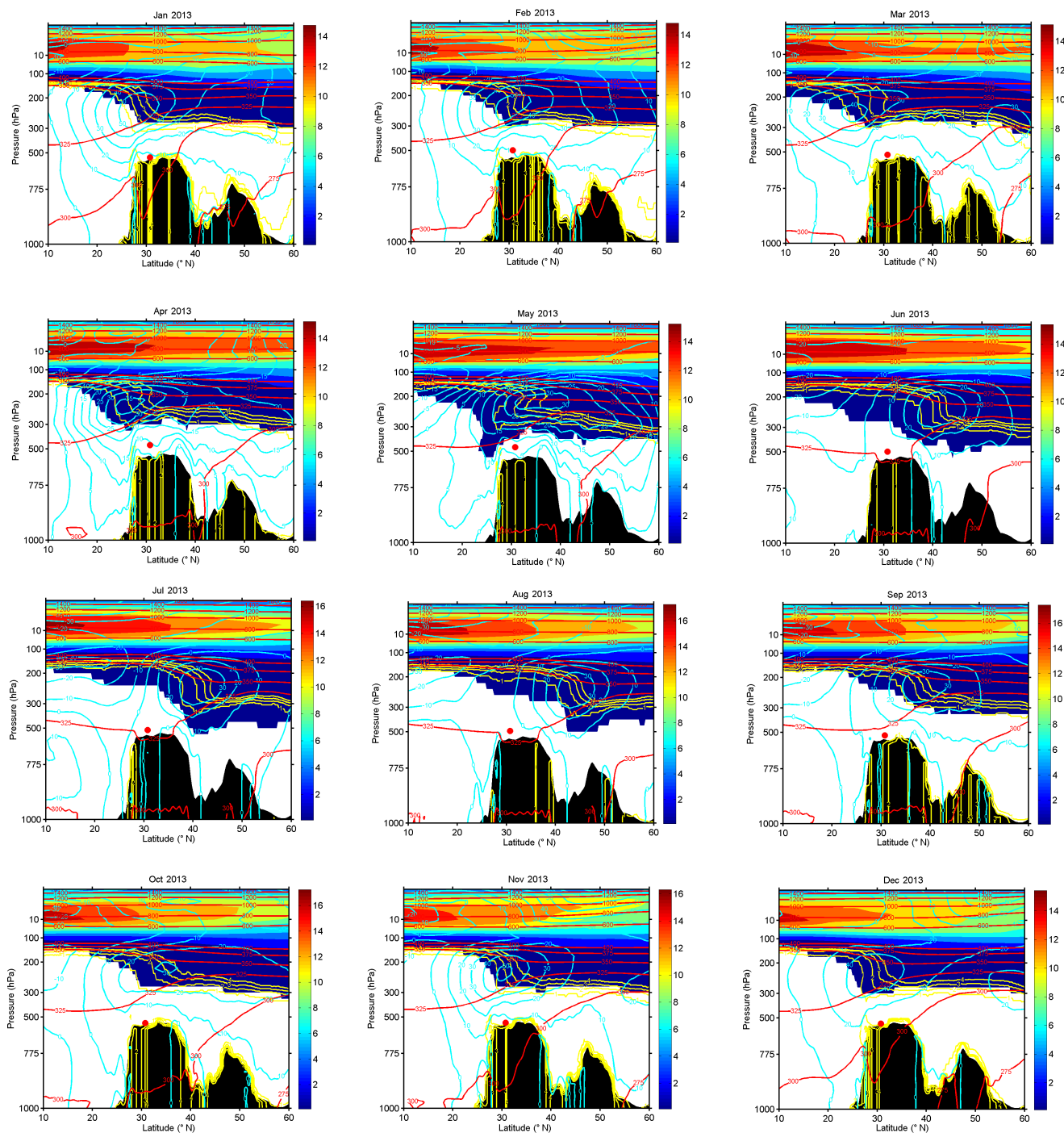


Figure 5. Monthly mean meridional cross section at 91° E (over Nam Co Station) at 20:00 UTC + 8 in 2013, derived from ERA-Interim data, including zonal winds (cyan contours; m s^{-2}), potential vorticity (yellow lines, contours of 1, 2, 3 and 4 potential vorticity units), ozone (solid color; $\times 10^6 \text{ kg kg}^{-1}$) and potential temperature (red contours; K). The color bar shows the scale for the contour plots of ozone concentration. The area in black shows the cross section of the Tibetan Plateau terrain. The red dots show the position of the top of the PBL (planetary boundary layer) at Nam Co Station.

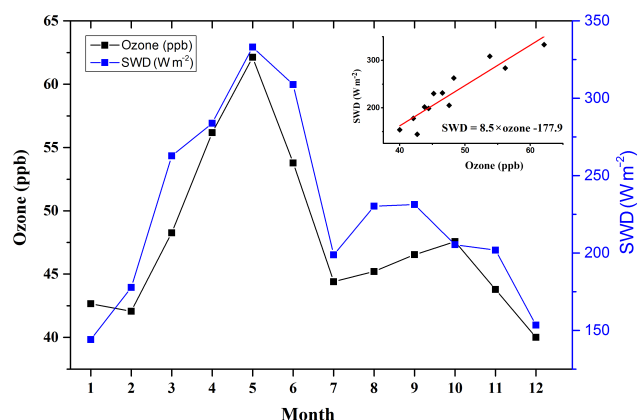


Figure 6. Comparison between monthly average surface ozone (black) and monthly average SWD (downward shortwave radiation; blue) at Nam Co Station in 2012.

The regression model was also performed by season, as shown in Table S1 in the Supplement. These results show that the largest stratospheric incursions occurred in the spring (March, April, May), with a 20 % contribution to ozone variation, and did not impact surface ozone in the fall (September, October, November). The air mass transport clusters accounted for nearly 10 % of the ozone variation in the summer (June, July, August) but very little otherwise.

To visualize the transport of ozone from the stratosphere to the troposphere, we analyzed the upper-troposphere and lower-stratosphere structures of the meridional cross section of monthly mean ERA-Interim data above Nam Co Station (Fig. 5). In the spring (March, April and May), the dynamical tropopause (identified by the isolines of 1 and 2 potential vorticity units) exhibited a folded structure over the Tibetan Plateau. This tropopause folding can lead to a downward transport of ozone from the stratosphere to the troposphere. Tropopause folding occurred in the southern Tibetan Plateau and closer to Nam Co Station in the spring. Cosmogenic ^{35}S results (Lin et al., 2016) also indicated that in the spring, Nam Co was affected by aged stratospheric air originating over the Himalayas rather than being affected by transport from fresh stratospheric air masses above Nam Co Station. The larger diurnal amplitude of surface ozone in the spring than in other seasons (Fig. 3; mentioned in Sect. 3.3) may be related to four factors: (1) the position of the STE (stratosphere–troposphere exchange) hot spot; (2) the frequency of STE; (3) PBLH at Nam Co Station; and (4) solar radiation at Nam Co Station. In the spring, plots of tropopause folding suggest that STE mostly occurs in the southern Tibetan Plateau which is close to Nam Co Station. Furthermore, PBLH at Nam Co Station was higher in the spring than during the rest of the year. The higher PBLH in the spring facilitated the impact of downward transport from the stratosphere to Nam Co Station. The spring also has more intense solar radiation than the summer because the monsoon leads to increased cloudi-

ness in the summer. Pearson's correlation coefficient between monthly SWD and surface ozone was ~ 0.93 in 2012 (2012 was selected because it had a more complete dataset than the other years) (Fig. 6), indicating that monthly surface ozone variability at Nam Co Station was associated with solar radiation. This was expected as increased solar radiation promotes the photochemical production of surface ozone in the spring, which is similar to the mechanism at other background sites (Monks, 2000). Consequently, more photochemical production of ozone is expected in the spring. In the summer (June, July and August), the jet core moved to the northern Tibetan Plateau and tropopause folding was relatively farther from Nam Co Station than in the spring. Consequently, there was a smaller impact of stratospheric air at Nam Co Station. With tropopause folding further north in the summer, the air masses from the northern Tibetan Plateau may contribute more to the surface ozone levels at Nam Co Station than the air masses from the southern Tibetan Plateau. Ojha et al. (2017) found that the potential vorticity layer in the summer was weaker than during the late winter and in the spring in the central Himalayan region which is to the south of Nam Co Station. In the autumn (September, October and November) and the winter (December, January and February), the mixing heights at Nam Co Station were much lower than in the spring and the summer. Furthermore, SWD in the autumn and the winter was weaker than in the spring and the summer. These factors contributed to the relatively low level of surface ozone at Nam Co Station in the autumn and the winter.

4.2 Impacts of vertical mixing and photochemical production on diurnal variation

Wind speed and PBLH are generally regarded as the main factors influencing the diurnal cycle of surface ozone. High wind speed was found to covary with turbulent downward mixing in previous studies in the Tibetan Plateau (Tang et al., 2002; Ma et al., 2014; Lin et al., 2015). A lake–land breeze influenced Nam Co Station, and the wind speed in the daytime was higher than that at night (Fig. S7). The hourly average wind speed and PBLH at Nam Co Station showed a positive correlation with the hourly average surface ozone (Fig. 7). The correlation coefficient between hourly average surface ozone and hourly average wind speed was 0.95 and the correlation coefficient between the hourly average surface ozone and the hourly average PBLH was 0.92. These results indicate that high levels of surface ozone are associated with high wind speeds and high mixing heights. In addition, local photochemical production may also contribute to the higher concentration of surface ozone at Nam Co Station in the daytime.

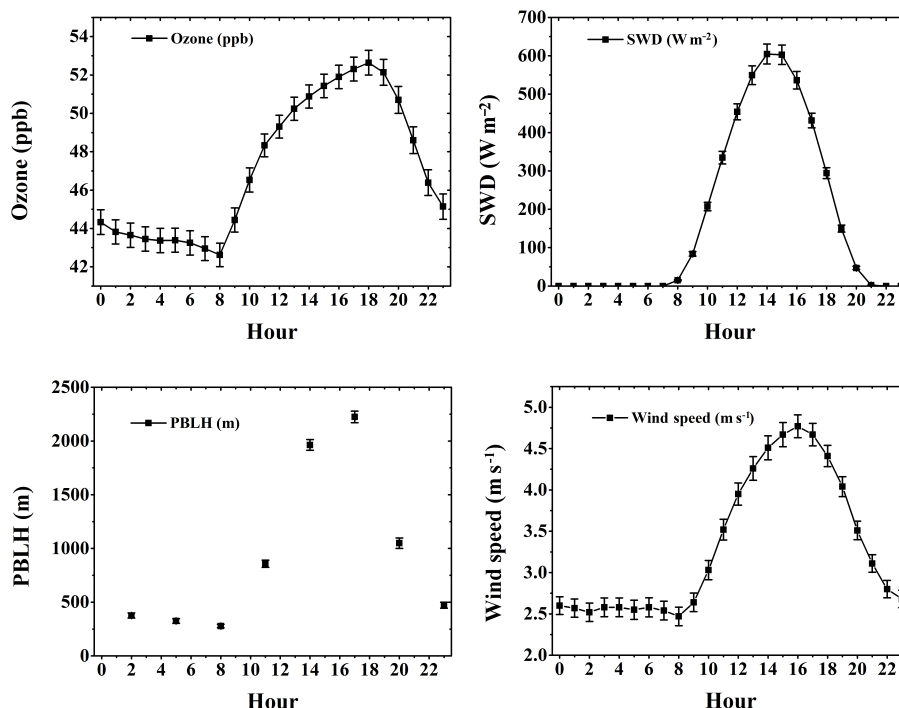


Figure 7. Diurnal variations in hourly average of surface ozone, SWD (downward shortwave radiation), wind speed and PBLH (planetary boundary layer height) during the whole measurement period at Nam Co Station. Error bars show the 95 % confidence intervals.

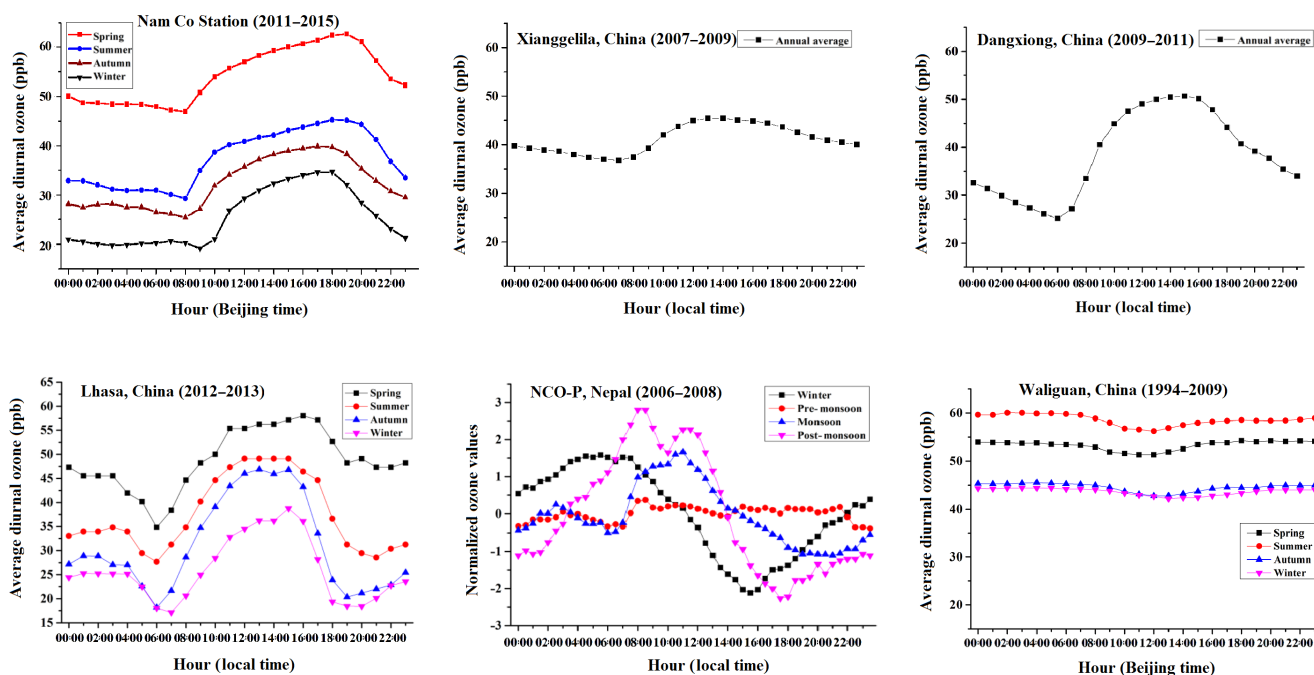


Figure 8. Comparison of diurnal profiles of surface ozone concentration at different sites in the Tibetan Plateau (based on Ma et al., 2014; Lin et al., 2015; Ran et al., 2014; Cristofanelli et al., 2010; Xu et al., 2011). Measurement years at different sites are displayed in brackets.

5 Synthesis comparison of surface ozone variation across the Tibetan Plateau and beyond

5.1 Diurnal variation

Diurnal surface ozone patterns varied among sites across the Tibetan Plateau (Fig. 8). Nam Co Station, Xianggelila, Lhasa and Dangxiong showed similar diurnal surface ozone patterns as discussed in Sect. 4.2.

Diurnal surface ozone at NCO-P showed different patterns in different seasons (Fig. 8), and thermal circulation was the most influential factor (Cristofanelli et al., 2010). The surface ozone mixing ratio at Waliguan experienced a minimum around noon and a maximum at night (Fig. 8), which is indicative of a mountain–valley breeze (local anabatic and catabatic winds) (Xue et al., 2011). Specifically, more boundary layer air affected Waliguan and resulted in lower surface ozone at noon, whereas at night, more air masses from the free troposphere increased the surface ozone level (Xu et al., 2011). It should be noted that the amplitudes in the diurnal variations at Waliguan were much smaller than those at other sites.

In general, diurnal surface ozone variations across the Tibetan Plateau were typically controlled by site-specific meteorological conditions and photochemical production. Sites located in plains or valleys exhibited daytime ozone maxima associated with vertical mixing and photochemical production, whereas mountaintop sites exhibited daytime ozone minima associated with upslope flow of low-ozone air.

5.2 Seasonal variation

The seasonal variation in surface ozone mixing ratios at different sites around the world is influenced by many factors including stratospheric intrusion, photochemical production, long-range transport of ozone or its precursors, local vertical mixing, and even deposition (Vingarzan, 2004; Ordóñez et al., 2005; Tang et al., 2009; Reidmiller et al., 2009; Cristofanelli et al., 2010; Langner et al., 2012; Ma et al., 2014; Lin et al., 2015, 2014; Ran et al., 2014; Xu et al., 2011; Macdonald et al., 2011; Pochanart et al., 2003; Derwent et al., 2016; Tarasova et al., 2009; Gilge et al., 2010; Wang et al., 2011, 2009; Zhu et al., 2004; Zhang et al., 2015; Nagashima et al., 2010). The seasonal variation in ozone at sites across the Tibetan Plateau and at the ridge of the Himalayas can be divided into the summer-maximum and spring-maximum type based on the location of the sites:

A. The northern Tibetan Plateau: summer-maximum type.

In the northern Tibetan Plateau (Waliguan site), surface ozone experienced a maximum in the summer and a minimum in the winter (Fig. 9a). The summer maximum of surface ozone at Waliguan was linked to the impact of a high ozone band between 35 and 45° N over 70–125° E (Zhu et al., 2004). Similarly, the Qing-

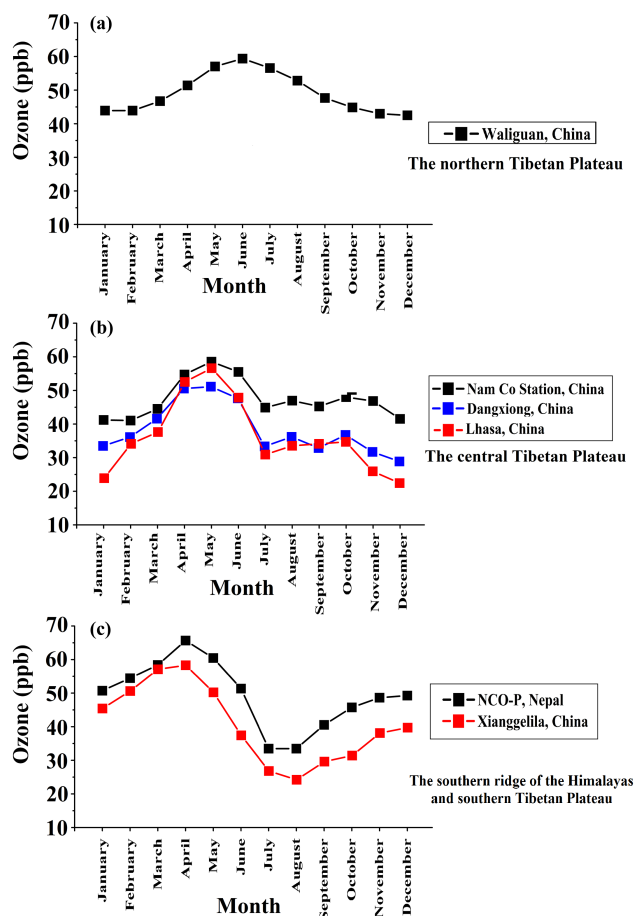


Figure 9. Monthly variation in surface ozone at different sites in the Tibetan Plateau (a: the northern Tibetan Plateau – summer-maximum type; b: the central Tibetan Plateau – spring-maximum type; c: the southern Tibetan Plateau and the southern ridge of the Himalayas – spring-maximum type) (based on Ma et al., 2014; Lin et al., 2015; Ran et al., 2014; Cristofanelli et al., 2010; Zhu et al., 2004).

hai Lake site also experienced a maximum in the summer (Shen et al., 2014). Horizontal and vertical wind transport have been regarded as major contributors to surface ozone at these two sites (Zhu et al., 2004; Shen et al., 2014).

B. The central Tibetan Plateau: spring-maximum type.

Sites in the central Tibetan Plateau including Nam Co Station experienced maximum ozone levels during the late spring–early summer and relatively low levels during the remainder of the year (Fig. 9b), corresponding to the spring-maximum type. Compared with the surface ozone levels at Nam Co Station, those at Lhasa and Dangxiong were much lower. It is possible that titration of ozone by NO_x at the urban sites as well as the differences in altitude and meteorology may lead to differences between the surface ozone concentrations at

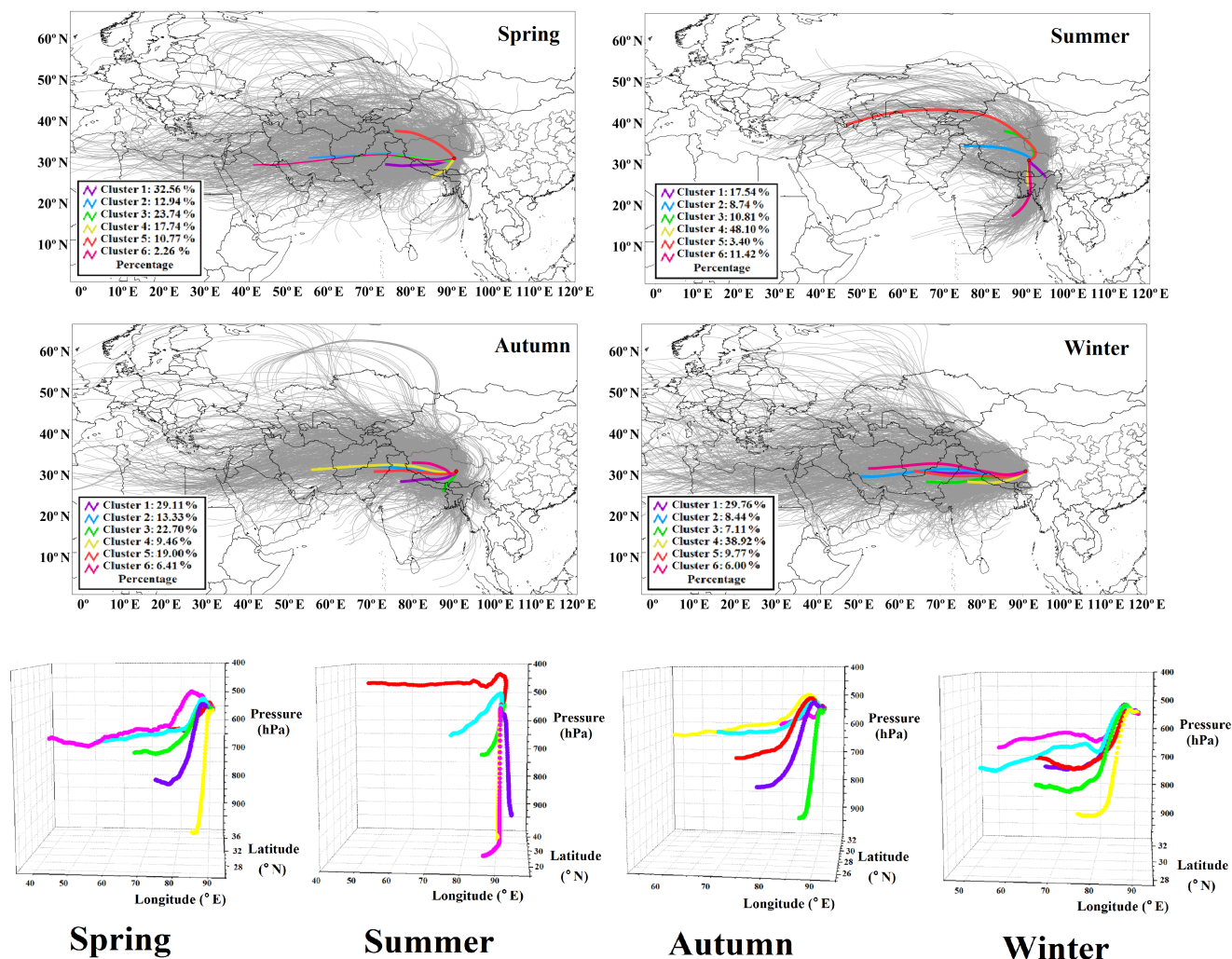


Figure 10. Backward HYSPLIT trajectories for each measurement day (black lines in the maps), and mean back trajectory for six HYSPLIT clusters (colored lines in the maps, 3-D view shown below the maps) arriving at Nam Co Station by season.

Nam Co Station and those at Lhasa and Dangxiong. A study at Dangxiong revealed that the higher rainfall in the summer caused the surface ozone levels to remain relatively low during the warm period (July–September) (Lin et al., 2015). At Lhasa, photochemistry was the main factor affecting surface ozone in the spring and summer, whereas transport largely contributed to the observed ozone mixing ratios in the autumn and the winter (Ran et al., 2014). The large-scale background of surface ozone in the spring is considered an important influence on Dangxiong and Lhasa during this season (Lin et al., 2015; Ran et al., 2014).

C. The southern Tibetan Plateau and the southern ridge of the Himalayas: spring-maximum type.

In the southern Tibetan Plateau and the southern ridge of the Himalayas, Xianggelila and NCO-P each had a single surface ozone peak in the spring (pre-monsoon) and

a minimum in the summer (monsoon), with the difference between the two exceeding 30 ppb. This pattern is different from those of the northern and central Tibetan Plateau (Fig. 9c). At NCO-P, frequent stratospheric intrusions were recorded in all seasons except during the monsoon season (Cristofanelli et al., 2010). A similar frequency of downward transport was identified at Xianggelila, including less frequent intrusions in the summer (Ma et al., 2014).

5.3 Backward trajectories and PSCF results of surface ozone at Nam Co Station

Backward trajectories and PSCF were utilized to identify the air masses associated with high levels of surface ozone at Nam Co Station and to assess the regional representativity of surface ozone at Nam Co Station. In the spring, the air masses that arrived at Nam Co Station were predomi-

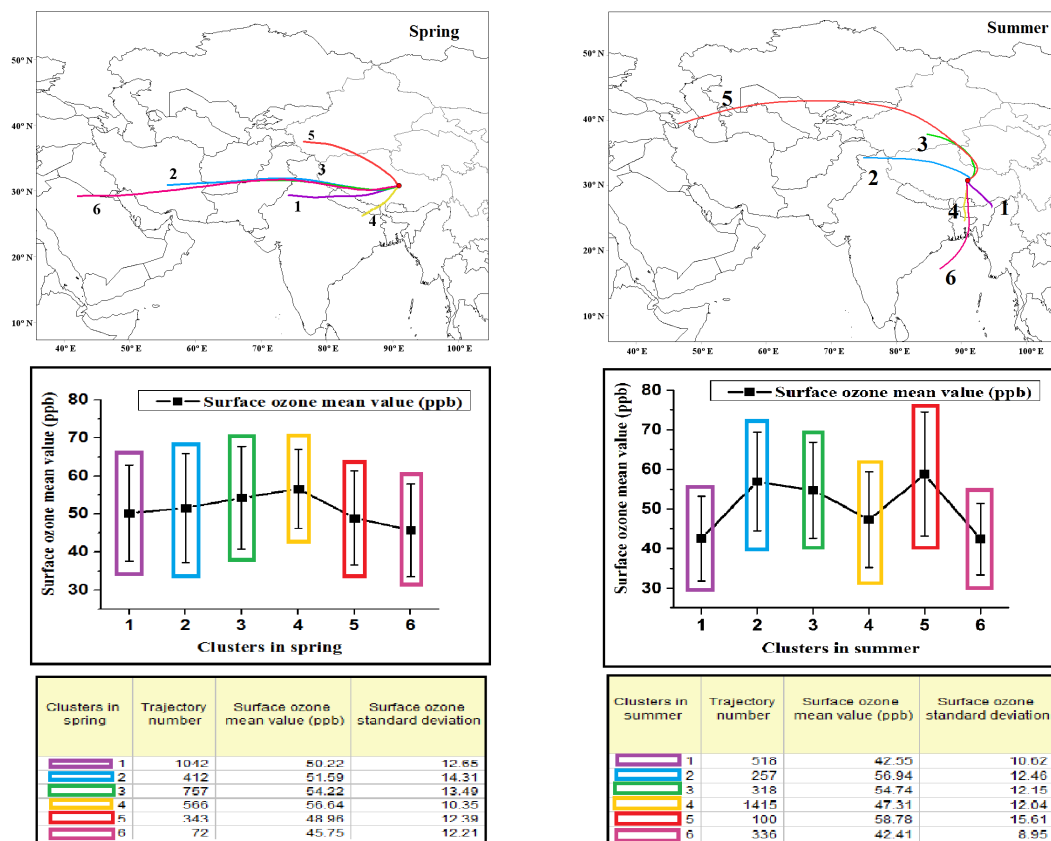


Figure 11. Mean trajectory of six HYSPLIT clusters arriving at Nam Co Station in the spring and the summer and the range of surface ozone mixing ratios measured at Nam Co Station by cluster.

nantly from the west and the south, and the 3-D clusters indicated that the air masses traveled through the Himalayas before reaching Nam Co Station (Fig. 10). Cristofanelli et al. (2010), Putero et al. (2016) and Chen et al. (2011) found that the frequency of stratospheric intrusions in the Himalayas was high in the spring; and slightly lower than during the winter. This was confirmed by the analysis of the ERA-Interim dataset, which showed that the seasonal average ozone flux from the stratosphere to the troposphere in the Himalayas was high in the spring (Škerlak et al., 2014). The contribution of polluted air masses in driving ozone variability at the southern ridge of the Himalayas was remarkable in the spring and it may also have had an effect on the level of surface ozone at Nam Co Station through transport. In the summer, there are more backward trajectories originating from the northern Tibetan Plateau than in the other seasons (Fig. 10). During the summer, the northern Tibetan Plateau is the hot spot of stratosphere-to-troposphere ozone flux, and during autumn this flux remains higher than the one in the southern Tibetan Plateau (Škerlak et al., 2014). The summer peak of surface ozone at Waliguan also suggests that the northern Tibetan Plateau and northwestern China (a band

between 35–45° N over 70–125° E) have their highest level of surface ozone in the summer (Zhu et al., 2004).

HYSPLIT backward trajectories arriving at Nam Co Station in the spring and summer were classified as belonging to six clusters (Fig. 11). In the spring, clusters that originated from the southern Tibetan Plateau had higher mean surface ozone levels than clusters that originated from the northern Tibetan Plateau. Air masses transported from the Himalayas therefore led to higher concentrations of surface ozone at Nam Co Station. The higher level of surface ozone at NCO-P (Cristofanelli et al., 2010) than at Nam Co Station in the spring may also reflect this possibility. In the summer, clusters from the northern Tibetan Plateau had higher mean surface ozone levels than clusters that originated from the southern Tibetan Plateau. The air masses that arrived at Nam Co Station from the northern Tibetan Plateau and northwestern China by horizontal wind transport likely resulted in the higher ozone concentrations at Nam Co Station in the summer.

Using PSCF, we have identified air masses associated with higher surface ozone at Nam Co Station in different seasons (Fig. 12) and throughout the measurement periods (Fig. S8). The Himalayas region to the south of Nam Co Sta-

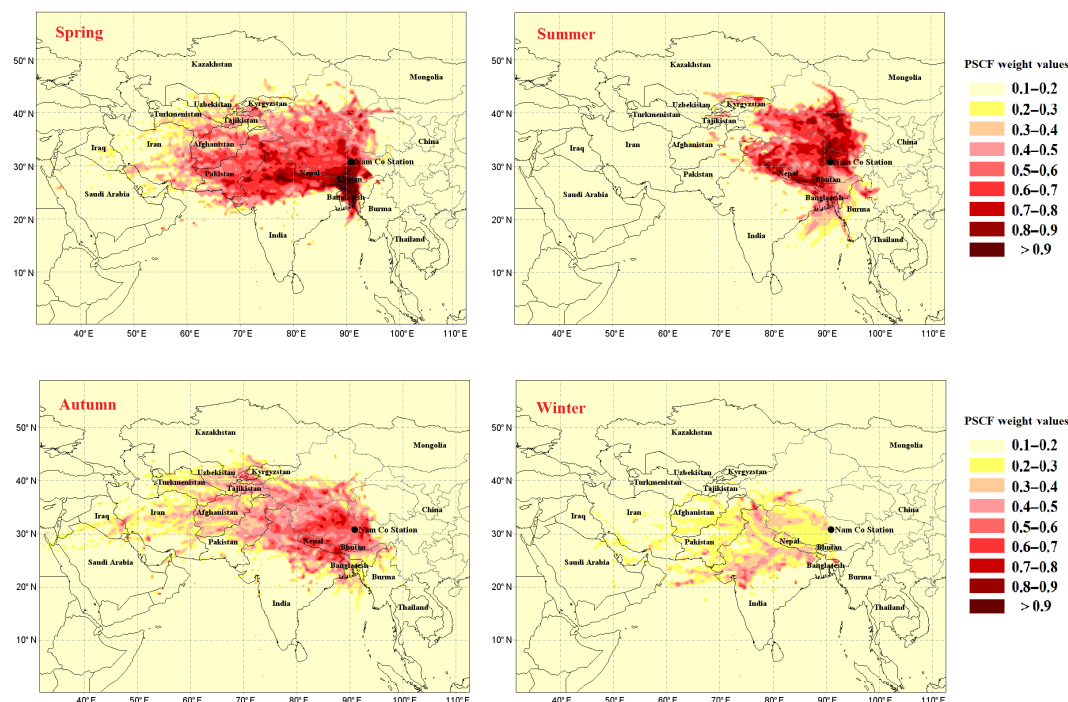


Figure 12. Likely source areas of air mass associated with higher surface ozone concentrations at Nam Co Station by season identified using PSCF.

tion and South Asian countries including Nepal, India Pakistan, Bangladesh and Bhutan had high PSCF weight values in both the spring and summer. The large areas of northwestern China, including the northern Tibetan Plateau, were the additional regions with potentially high PSCF weight values in the summer. The PSCF values for both the southern and northern Tibetan Plateau in the autumn were smaller than those in the spring and summer. In the autumn, the inland Tibetan Plateau appeared to have a larger impact on the study site than regions more on the edge of the Tibetan Plateau. In the winter, no obvious region was identified as a potential source region, which was likely due to low surface ozone mixing ratios in all these areas. PSCF probably picked up the contribution from STE as a signal from the south in the spring and from the north in the summer, and the transport of pollution from the Indo-Gangetic Plain and Himalayan foothills was also probably picked up by PSCF.

5.4 Implication for measurement and study of surface ozone in the inland Tibetan Plateau and beyond

The changes in the atmospheric environment of the Tibetan Plateau are of great concern due to its rapid responses and feedbacks to regional and global climate changes. The Tibetan Plateau covers vast areas with varying topography; however, comprehensive monitoring sites are limited and sporadically distributed. The analysis of the atmospheric composition at Waliguan in the north and Everest in the south

of the Tibetan Plateau has shown that they are representative of high-altitude background sites for the Tibetan Plateau. It is noteworthy that the Tibetan Plateau, as a whole, is primarily regulated by the interplay of the Indian summer monsoon and the westerlies, and the atmospheric environment over the Tibetan Plateau is heterogeneous. Mount Everest is representative of the Himalayas on the southern edge of the Tibetan Plateau and is close to South Asia where anthropogenic atmospheric pollution has been increasingly recognized as disturbing the high mountain regions (Decesari et al., 2010; Maione et al., 2011; Putero et al., 2014). In addition, Mount Everest has been identified as a hot spot for stratospheric–tropospheric exchange (Cristofanelli et al., 2010; Škerlak et al., 2014) where the surface ozone is elevated from the baseline during the spring due to frequent stratospheric intrusions. Waliguan, in the northern Tibetan Plateau, is occasionally influenced by regional polluted air masses (Zhu et al., 2004; Xue et al., 2011; Zhang et al., 2011), and the impacts of anthropogenic emissions on Waliguan occur mainly in the summer (Xue et al., 2011). Nam Co Station, in the inland Tibetan Plateau, is distant from both South Asia and northwestern China; it has been found to be influenced by episodic long-range transport of air pollution from South Asia (Xia et al., 2011; Lüthi et al., 2015), evidenced by the study of aerosol and precipitation chemistry at Nam Co Station (Cong et al., 2007, 2010). As for surface ozone, Nam Co Station is less directly influenced by stratospheric intrusions than NCO-P and is minimally influenced by local anthropogenic

emission. Nam Co Station showed distinct seasonal and diurnal variation patterns compared with those sites in the Himalayas and the northern Tibetan Plateau presented earlier. Our measurements of surface ozone at Nam Co Station are essential datasets of the inland Tibetan Plateau. More long-term measurements are needed to enable a better spatial coverage and a comprehensive understanding of regional surface ozone variations and underlying influential mechanisms.

6 Summary

Surface ozone mixing ratios and meteorological parameters were continuously measured from January 2011 to October 2015 at Nam Co Station in the inland Tibetan Plateau. The interannual mixing ratios of surface ozone were stable with an average of 47.6 ± 11.6 ppb throughout the monitoring period. The surface ozone mixing ratios at Nam Co Station were high in the spring and low in the winter. The diurnal cycle indicated that the ozone mixing ratio continued to increase after sunrise until sunset and was higher in the daytime than at night.

The mixing ratio of surface ozone at Nam Co Station is mainly controlled by various natural factors. Downward transport of air masses, air masses from the southern Tibetan Plateau in the spring and from the northern Tibetan Plateau in the summer contributed to the elevated monthly concentrations of ozone at the surface. Diurnal peaks of surface ozone in the afternoon were associated with high SWD, high PBLH and high wind speed. The analysis suggests that the maximum contribution of stratospheric intrusions to variability in surface ozone at Nam Co Station is approximately 20 %. Further analysis of tropopause folding suggests that Nam Co Station is affected by air masses associated with stratospheric intrusions transported from the southern and northern Tibetan Plateau, mainly during the spring and the summer, respectively.

Surface ozone at Nam Co Station showed distinct seasonal and diurnal variation patterns as compared with other sites in the Himalayas and the northern Tibetan Plateau. The monthly maximum of surface ozone at Nam Co Station, which is in the inland Tibetan Plateau, occurred later in the year compared with the sites in the southern Tibetan Plateau and the southern ridge of the Himalayas, but earlier in the year than at the sites in the northern Tibetan Plateau.

Our measurements contribute to the understanding of ozone cycles and related physicochemical and transport processes over the Tibetan Plateau. More long-term measurements of surface ozone at field sites covering the spatially extensive Tibetan Plateau are needed to improve our understanding of surface ozone variations and the underlying influential mechanisms.

Data availability. All the data presented in this paper can be made available for scientific purposes upon request to the corresponding authors (Qianggong Zhang (qianggong.zhang@itpcas.ac.cn) or Shichang Kang (shichang.kang@lzb.ac.cn)).

The Supplement related to this article is available online at <https://doi.org/10.5194/acp-17-11293-2017-supplement>.

Competing interests. The authors declare that they have no conflict of interest.

Special issue statement. This article is part of the special issue “Study of ozone, aerosols and radiation over the Tibetan Plateau (SOAR-TP) (ACP/AMT inter-journal SI)”. It is not associated with a conference.

Acknowledgements. This study was supported by the National Natural Science Foundation of China (41371088 and 41630754) and the Strategic Priority Research Program (B) of the Chinese Academy of Sciences (XDB03030504). The authors are grateful to NOAA for providing the HYSPLIT model and GFS meteorological files. The authors thank Yaqiang Wang, who is the developer of MeteoInfo and who provided generous help. Finally, the authors would like to thank the editor and referees of this paper for their helpful comments and suggestions.

Edited by: Xiaobin Xu

Reviewed by: two anonymous referees

References

- Ashbaugh, L. L., Malm, W. C., and Sadeh, W. Z.: A residence time probability analysis of sulfur concentrations at Grand Canyon National Park, *Atmos. Environ.*, 19, 1263–1270, 1985.
- Brasseur, G., Orlando, J. J., and Tyndall, G. S.: *Atmospheric chemistry and global change*, Oxford University Press, 1999.
- Brioude, J., Arnold, D., Stohl, A., Cassiani, M., Morton, D., Seibert, P., Angevine, W., Evan, S., Dingwell, A., Fast, J. D., Easter, R. C., Pisso, I., Burkhardt, J., and Wotawa, G.: The Lagrangian particle dispersion model FLEXPART-WRF version 3.1, *Geosci. Model Dev.*, 6, 1889–1904, <https://doi.org/10.5194/gmd-6-1889-2013>, 2013.
- Chameides, W. and Walker, J. C.: A photochemical theory of tropospheric ozone, *J. Geophys. Res.*, 78, 8751–8760, 1973.
- Chen, X. L., Ma, Y. M., Kelder, H., Su, Z., and Yang, K.: On the behaviour of the tropopause folding events over the Tibetan Plateau, *Atmos. Chem. Phys.*, 11, 5113–5122, <https://doi.org/10.5194/acp-11-5113-2011>, 2011.
- Cong, Z., Kang, S., Liu, X., and Wang, G.: Elemental composition of aerosol in the Nam Co region, Tibetan Plateau, during summer monsoon season, *Atmos. Environ.*, 41, 1180–1187, 2007.

- Cong, Z., Kang, S., Zhang, Y., and Li, X.: Atmospheric wet deposition of trace elements to central Tibetan Plateau, *Appl. Geochem.*, 25, 1415–1421, 2010.
- Cooper, O. R., Parrish, D., Ziemke, J., Balashov, N., Cupeiro, M., Galbally, I., Gilge, S., Horowitz, L., Jensen, N., and Lamarque, J.-F.: Global distribution and trends of tropospheric ozone: An observation-based review, *Elementa: Science of the Anthropocene*, 2, 000029, <https://doi.org/10.12952/journal.elementa.000029>, 2014.
- Cristofanelli, P., Bracci, A., Sprenger, M., Marinoni, A., Bonafè, U., Calzolari, F., Duchi, R., Laj, P., Pichon, J. M., Roccatto, F., Venzac, H., Vuillermoz, E., and Bonasoni, P.: Tropospheric ozone variations at the Nepal Climate Observatory-Pyramid (Himalayas, 5079 m a.s.l.) and influence of deep stratospheric intrusion events, *Atmos. Chem. Phys.*, 10, 6537–6549, <https://doi.org/10.5194/acp-10-6537-2010>, 2010.
- Crutzen, P. J.: Photochemical reactions initiated by and influencing ozone in unpolluted tropospheric air, *Tellus*, 26, 47–57, 1974.
- Decesari, S., Facchini, M. C., Carbone, C., Giulianelli, L., Rinaldi, M., Finessi, E., Fuzzi, S., Marinoni, A., Cristofanelli, P., Duchi, R., Bonasoni, P., Vuillermoz, E., Cozic, J., Jaffrezo, J. L., and Laj, P.: Chemical composition of PM₁₀ and PM₁ at the high-altitude Himalayan station Nepal Climate Observatory-Pyramid (NCO-P) (5079 m a.s.l.), *Atmos. Chem. Phys.*, 10, 4583–4596, <https://doi.org/10.5194/acp-10-4583-2010>, 2010.
- Dee, D., Uppala, S., Simmons, A., Berrisford, P., Poli, P., Kobayashi, S., Andrae, U., Balmaseda, M., Balsamo, G., and Bauer, P.: The ERA – reanalysis: Configuration and performance of the data assimilation system, *Q. J. Roy. Meteor. Soc.*, 137, 553–597, 2011.
- de Foy, B., Heo, J., and Schauer, J. J.: Estimation of direct emissions and atmospheric processing of reactive mercury using inverse modeling, *Atmos. Environ.*, 85, 73–82, 2014.
- de Foy, B., Cui, Y. Y., Schauer, J. J., Janssen, M., Turner, J. R., and Wiedinmyer, C.: Estimating sources of elemental and organic carbon and their temporal emission patterns using a least squares inverse model and hourly measurements from the St. Louis–Midwest supersite, *Atmos. Chem. Phys.*, 15, 2405–2427, <https://doi.org/10.5194/acp-15-2405-2015>, 2015.
- de Foy, B., Lu, Z., and Streets, D. G.: Impacts of control strategies, the Great Recession and weekday variations on NO₂ columns above North American cities, *Atmos. Environ.*, 138, 74–86, 2016a.
- de Foy, B., Lu, Z., and Streets, D. G.: Satellite NO₂ retrievals suggest China has exceeded its NO_x reduction goals from the twelfth Five-Year Plan, *Scientific Reports*, 6, 35912, <https://doi.org/10.1038/srep35912>, 2016b.
- de Foy, B., Tong, Y., Yin, X., Zhang, W., Kang, S., Zhang, Q., Zhang, G., Wang, X., and Schauer, J. J.: First field-based atmospheric observation of the reduction of reactive mercury driven by sunlight, *Atmos. Environ.*, 134, 27–39, 2016c.
- Derwent, R. G., Parrish, D. D., Galbally, I. E., Stevenson, D. S., Doherty, R. M., Young, P. J., and Shallcross, D. E.: Interhemispheric differences in seasonal cycles of tropospheric ozone in the marine boundary layer: Observation – model comparisons, *J. Geophys. Res.-Atmos.*, 121, 11075–11085, <https://doi.org/10.1002/2016JD024836>, 2016.
- Desqueyroux, H., Pujet, J.-C., Prosper, M., Squinazi, F., and Moras, I.: Short-term effects of low-level air pollution on respiratory health of adults suffering from moderate to severe asthma, *Environ. Res.*, 89, 29–37, 2002.
- Dimitriou, K. and Kassomenos, P.: Three year study of tropospheric ozone with back trajectories at a metropolitan and a medium scale urban area in Greece, *Sci. Total Environ.*, 502, 493–501, 2015.
- Draxler, R. R. and Rolph, G.: HYSPLIT (HYbrid Single-Particle Lagrangian Integrated Trajectory) model access via NOAA ARL READY website (<http://www.arl.noaa.gov/ready/hysplit4.html>, last access: October 2007), NOAA Air Resources Laboratory, Silver Spring, Md, 2003.
- Gilge, S., Plass-Duelmer, C., Fricke, W., Kaiser, A., Ries, L., Buchmann, B., and Steinbacher, M.: Ozone, carbon monoxide and nitrogen oxides time series at four alpine GAW mountain stations in central Europe, *Atmos. Chem. Phys.*, 10, 12295–12316, <https://doi.org/10.5194/acp-10-12295-2010>, 2010.
- Huang, J., Kang, S., Zhang, Q., Yan, H., Guo, J., Jenkins, M. G., Zhang, G., and Wang, K.: Wet deposition of mercury at a remote site in the Tibetan Plateau: concentrations, speciation, and fluxes, *Atmos. Environ.*, 62, 540–550, 2012.
- Junge, C. E.: Global ozone budget and exchange between stratosphere and troposphere, *Tellus*, 14, 363–377, 1962.
- Kaiser, A., Scheffinger, H., Spangl, W., Weiss, A., Gilge, S., Fricke, W., Ries, L., Cemas, D., and Jesenovec, B.: Transport of nitrogen oxides, carbon monoxide and ozone to the alpine global atmosphere watch stations Jungfraujoch (Switzerland), Zugspitze and Hohenpeißenberg (Germany), Sonnblick (Austria) and Mt. Kravec (Slovenia), *Atmos. Environ.*, 41, 9273–9287, 2007.
- Kang, S., Yang, Y., Zhu, L., and Ma, Y.: Modern environmental processes and changes in the Nam Co basin, Tibetan Plateau, in: *China: Beijing Meteorological Press*, 2011.
- Langner, J., Engardt, M., Baklanov, A., Christensen, J. H., Gauss, M., Geels, C., Hedegaard, G. B., Nuterman, R., Simpson, D., Soares, J., Sofiev, M., Wind, P., and Zakey, A.: A multi-model study of impacts of climate change on surface ozone in Europe, *Atmos. Chem. Phys.*, 12, 10423–10440, <https://doi.org/10.5194/acp-12-10423-2012>, 2012.
- Li, C., Kang, S., Zhang, Q., and Kaspari, S.: Major ionic composition of precipitation in the Nam Co region, Central Tibetan Plateau, *Atmos. Res.*, 85, 351–360, 2007.
- Lin, M., Horowitz, L. W., Oltmans, S. J., Fiore, A. M., and Fan, S.: Tropospheric ozone trends at Mauna Loa Observatory tied to decadal climate variability, *Nat. Geosci.*, 7, 136–143, 2014.
- Lin, M., Zhang, Z., Su, L., Hill-Falkenthal, J., Priyadarshi, A., Zhang, Q., Zhang, G., Kang, S., Chan, C. Y., and Thieme, M. H.: Resolving the impact of stratosphere-to-troposphere transport on the sulfur cycle and surface ozone over the Tibetan Plateau using a cosmogenic ³⁵S tracer, *J. Geophys. Res.-Atmos.*, 121, 439–456, 2016.
- Lin, W., Xu, X., Zheng, X., Dawa, J., Baima, C., and Ma, J.: Two-year measurements of surface ozone at Dangxiong, a remote highland site in the Tibetan Plateau, *J. Environ. Sci.*, 31, 133–145, 2015.
- Liu, Y. W., Xu-Ri, Wang, Y. S., Pan, Y. P., and Piao, S. L.: Wet deposition of atmospheric inorganic nitrogen at five remote sites in the Tibetan Plateau, *Atmos. Chem. Phys.*, 15, 11683–11700, <https://doi.org/10.5194/acp-15-11683-2015>, 2015.
- LRTAP: Mapping Critical Levels for Vegetation, Chapter III of Manual on methodologies and criteria for modelling and map-

- ping critical loads and levels and air pollution effects, risks and trends, UNECE Convention on Long-range Transboundary Air Pollution, Zagreb, Croatia, 20–23 April 2015.
- Lüthi, Z. L., Škerlak, B., Kim, S.-W., Lauer, A., Mues, A., Rupakheti, M., and Kang, S.: Atmospheric brown clouds reach the Tibetan Plateau by crossing the Himalayas, *Atmos. Chem. Phys.*, 15, 6007–6021, <https://doi.org/10.5194/acp-15-6007-2015>, 2015.
- Ma, J., Lin, W. L., Zheng, X. D., Xu, X. B., Li, Z., and Yang, L. L.: Influence of air mass downward transport on the variability of surface ozone at Xianggelila Regional Atmosphere Background Station, southwest China, *Atmos. Chem. Phys.*, 14, 5311–5325, <https://doi.org/10.5194/acp-14-5311-2014>, 2014.
- Ma, Y., Kang, S., Zhu, L., Xu, B., Tian, L., and Yao, T.: Roof of the world: Tibetan observation and research platform: Atmosphere-land Interaction over a heterogeneous landscape, *B. Am. Meteorol. Soc.*, 89, 1487–1492, 2008.
- Macdonald, A. M., Anlauf, K. G., Leaitch, W. R., Chan, E., and Tarasick, D. W.: Interannual variability of ozone and carbon monoxide at the Whistler high elevation site: 2002–2006, *Atmos. Chem. Phys.*, 11, 11431–11446, <https://doi.org/10.5194/acp-11-11431-2011>, 2011.
- Maione, M., Giostra, U., Arduini, J., Furlani, F., Bonasoni, P., Cristofanelli, P., Laj, P., and Vuillermoz, E.: Three-year observations of halocarbons at the Nepal Climate Observatory at Pyramid (NCO-P, 5079 m a.s.l.) on the Himalayan range, *Atmos. Chem. Phys.*, 11, 3431–3441, <https://doi.org/10.5194/acp-11-3431-2011>, 2011.
- Mauzerall, D. L. and Wang, X.: Protecting agricultural crops from the effects of tropospheric ozone exposure: reconciling science and standard setting in the United States, Europe, and Asia, *Annu. Rev. Energ. Env.*, 26, 237–268, 2001.
- Monks, P. S.: A review of the observations and origins of the spring ozone maximum, *Atmos. Environ.*, 34, 3545–3561, 2000.
- Myhre, G., Shindell, D., Bréon, F.-M., Collins, W., Fuglestedt, J., Huang, J., Koch, D., Lamarque, J.-F., Lee, D., and Mendoza, B.: Anthropogenic and natural radiative forcing, *Climate Change*, 423, 658–740, 2013.
- Nagashima, T., Ohara, T., Sudo, K., and Akimoto, H.: The relative importance of various source regions on East Asian surface ozone, *Atmos. Chem. Phys.*, 10, 11305–11322, <https://doi.org/10.5194/acp-10-11305-2010>, 2010.
- Ojha, N., Pozzer, A., Akritidis, D., and Lelieveld, J.: Secondary ozone peaks in the troposphere over the Himalayas, *Atmos. Chem. Phys.*, 17, 6743–6757, <https://doi.org/10.5194/acp-17-6743-2017>, 2017.
- Ordóñez, C., Mathis, H., Furger, M., Henne, S., Hüglin, C., Staehelin, J., and Prévôt, A. S. H.: Changes of daily surface ozone maxima in Switzerland in all seasons from 1992 to 2002 and discussion of summer 2003, *Atmos. Chem. Phys.*, 5, 1187–1203, <https://doi.org/10.5194/acp-5-1187-2005>, 2005.
- Pochanart, P., Akimoto, H., Kajii, Y., Potemkin, V. M., and Khodzher, T. V.: Regional background ozone and carbon monoxide variations in remote Siberia/east Asia, *J. Geophys. Res.-Atmos.*, 108, 4028, <https://doi.org/10.1029/2001JD001412>, 2003.
- Polissar, A., Hopke, P., Paatero, P., Kaufmann, Y., Hall, D., Bodhaine, B., Dutton, E., and Harris, J.: The aerosol at Barrow, Alaska: long-term trends and source locations, *Atmos. Environ.*, 33, 2441–2458, 1999.
- Putero, D., Landi, T., Cristofanelli, P., Marinoni, A., Laj, P., Duchi, R., Calzolari, F., Verza, G., and Bonasoni, P.: Influence of open vegetation fires on black carbon and ozone variability in the southern Himalayas (NCO-P, 5079 m asl), *Environ. Pollut.*, 184, 597–604, 2014.
- Putero, D., Cristofanelli, P., Sprenger, M., Škerlak, B., Tositti, L., and Bonasoni, P.: STEFLUX, a tool for investigating stratospheric intrusions: application to two WMO/GAW global stations, *Atmos. Chem. Phys.*, 16, 14203–14217, <https://doi.org/10.5194/acp-16-14203-2016>, 2016.
- Qiao, Q. and Zhang, Y.: Synoptic meteorology of the Tibetan Plateau and its effect on the near areas, in: *China Meteorological Press*, Beijing, 1994.
- Ramboll Environ: CAMx User's Guide: Comprehensive Air Quality Model with Extensions (CAMx) v6.30, March 2016.
- Ran, L., Lin, W. L., Deji, Y. Z., La, B., Tsering, P. M., Xu, X. B., and Wang, W.: Surface gas pollutants in Lhasa, a highland city of Tibet – current levels and pollution implications, *Atmos. Chem. Phys.*, 14, 10721–10730, <https://doi.org/10.5194/acp-14-10721-2014>, 2014.
- Rao, S., Zurbenko, I., Neagu, R., Porter, P., Ku, J., and Henry, R.: Space and time scales in ambient ozone data, *B. Am. Meteorol. Soc.*, 78, 2153–2166, 1997.
- Reidmiller, D. R., Fiore, A. M., Jaffe, D. A., Bergmann, D., Cuvelier, C., Dentener, F. J., Duncan, B. N., Folberth, G., Gauss, M., Gong, S., Hess, P., Jonson, J. E., Keating, T., Lupu, A., Marmier, E., Park, R., Schultz, M. G., Shindell, D. T., Szopa, S., Vivanco, M. G., Wild, O., and Zuber, A.: The influence of foreign vs. North American emissions on surface ozone in the US, *Atmos. Chem. Phys.*, 9, 5027–5042, <https://doi.org/10.5194/acp-9-5027-2009>, 2009.
- REVIHAAP: Review of evidence on health aspects of air pollution – REVIHAAP Project technical report, World Health Organization (WHO) Regional Office for Europe, Bonn, 2013.
- Roelofs, G. J., Scheeren, H. A., Heland, J., Ziereis, H., and Lelieveld, J.: A model study of ozone in the eastern Mediterranean free troposphere during MINOS (August 2001), *Atmos. Chem. Phys.*, 3, 1199–1210, <https://doi.org/10.5194/acp-3-1199-2003>, 2003.
- Shen, Z., Cao, J., Zhang, L., Zhao, Z., Dong, J., Wang, L., Wang, Q., Li, G., Liu, S., and Zhang, Q.: Characteristics of surface O₃ over Qinghai Lake area in Northeast Tibetan Plateau, China, *Sci. Total Environ.*, 500, 295–301, 2014.
- Sirois, A. and Bottenheim, J. W.: Use of backward trajectories to interpret the 5-year record of PAN and O₃ ambient air concentrations at Kejimikujik National Park, Nova Scotia, *J. Geophys. Res.-Atmos.*, 100, 2867–2881, 1995.
- Škerlak, B., Sprenger, M., and Wernli, H.: A global climatology of stratosphere–troposphere exchange using the ERA-Interim data set from 1979 to 2011, *Atmos. Chem. Phys.*, 14, 913–937, <https://doi.org/10.5194/acp-14-913-2014>, 2014.
- Stohl, A., Forster, C., Frank, A., Seibert, P., and Wotawa, G.: Technical note: The Lagrangian particle dispersion model FLEXPART version 6.2, *Atmos. Chem. Phys.*, 5, 2461–2474, <https://doi.org/10.5194/acp-5-2461-2005>, 2005.
- Tang, G., Li, X., Wang, Y., Xin, J., and Ren, X.: Surface ozone trend details and interpretations in Beijing, 2001–2006, *Atmos.*

- Chem. Phys., 9, 8813–8823, <https://doi.org/10.5194/acp-9-8813-2009>, 2009.
- Tang, J., Zhou, L., Zheng, X., Zhou, X., Shi, G., and Suolang, D.: The observational study of surface ozone at Lhasa suburb in summer 1998, *Act. Meteo. Sinica*, 60, 221–229, 2002.
- Tarasova, O. A., Senik, I. A., Sosonkin, M. G., Cui, J., Staehelein, J., and Prévôt, A. S. H.: Surface ozone at the Caucasian site Kislovodsk High Mountain Station and the Swiss Alpine site Jungfraujoch: data analysis and trends (1990–2006), *Atmos. Chem. Phys.*, 9, 4157–4175, <https://doi.org/10.5194/acp-9-4157-2009>, 2009.
- US EPA: Integrated Science Assessment (ISA) of Ozone and Related Photochemical Oxidants (Final Report, Feb 2013), US Environmental Protection Agency, Washington, D.C., EPA/600/R-10/076F, 2013.
- Vingarzan, R.: A review of surface ozone background levels and trends, *Atmos. Environ.*, 38, 3431–3442, 2004.
- Wang, T., Wei, X. L., Ding, A. J., Poon, C. N., Lam, K. S., Li, Y. S., Chan, L. Y., and Anson, M.: Increasing surface ozone concentrations in the background atmosphere of Southern China, 1994–2007, *Atmos. Chem. Phys.*, 9, 6217–6227, <https://doi.org/10.5194/acp-9-6217-2009>, 2009.
- Wang, Y.: MeteoInfo: GIS software for meteorological data visualization and analysis, *Meteorol. Appl.*, 21, 360–368, 2014.
- Wang, Y., Zhang, Y., Hao, J., and Luo, M.: Seasonal and spatial variability of surface ozone over China: contributions from background and domestic pollution, *Atmos. Chem. Phys.*, 11, 3511–3525, <https://doi.org/10.5194/acp-11-3511-2011>, 2011.
- Wang, Y., Zhang, Y., Schauer, J. J., de Foy, B., Guo, B., and Zhang, Y.: Relative impact of emissions controls and meteorology on air pollution mitigation associated with the Asia-Pacific Economic Cooperation (APEC) conference in Beijing, China, *Sci. Total Environ.*, 571, 1467–1476, 2016.
- Wang, Y., de Foy, B., Schauer, J. J., Olson, M. R., Zhang, Y., Li, Z., and Zhang, Y.: Impacts of regional transport on black carbon in Huairou, Beijing, China, *Environ. Pollut.*, 221, 75–84, 2017.
- Wild, O. and Prather, M. J.: Global tropospheric ozone modeling: Quantifying errors due to grid resolution, *J. Geophys. Res.-Atmos.*, 111, D11305, <https://doi.org/10.1029/2005JD006605>, 2006.
- Wu, S., Mickley, L. J., Jacob, D. J., Logan, J. A., Yantosca, R. M., and Rind, D.: Why are there large differences between models in global budgets of tropospheric ozone?, *J. Geophys. Res.-Atmos.*, 112, D05302, <https://doi.org/10.1029/2006JD007801>, 2007.
- Xia, X., Zong, X., Cong, Z., Chen, H., Kang, S., and Wang, P.: Baseline continental aerosol over the central Tibetan plateau and a case study of aerosol transport from South Asia, *Atmos. Environ.*, 45, 7370–7378, 2011.
- Xu, W., Lin, W., Xu, X., Tang, J., Huang, J., Wu, H., and Zhang, X.: Long-term trends of surface ozone and its influencing factors at the Mt Waliguan GAW station, China – Part 1: Overall trends and characteristics, *Atmos. Chem. Phys.*, 16, 6191–6205, <https://doi.org/10.5194/acp-16-6191-2016>, 2016.
- Xu, X., Tang, J., and Lin, W.: The trend and variability of surface ozone at the global GAW station Mt. WALIGUAN, China, Second Tropospheric Ozone Workshop Tropospheric Ozone Changes: Observations, state of understanding and model performances, WMO/GAW report, WMO, Geneva, 49–55, 2011.
- Xue, L., Wang, T., Zhang, J., Zhang, X., Poon, C., Ding, A., Zhou, X., Wu, W., Tang, J., and Zhang, Q.: Source of surface ozone and reactive nitrogen speciation at Mount Waliguan in western China: new insights from the 2006 summer study, *J. Geophys. Res.-Atmos.*, 116, D07306, <https://doi.org/10.1029/2010JD014735>, 2011.
- Yao, T., Thompson, L. G., Mosbrugger, V., Zhang, F., Ma, Y., Luo, T., Xu, B., Yang, X., Joswiak, D. R., and Wang, W.: Third pole environment (TPE), *Environ. Develop.*, 3, 52–64, 2012.
- Zhang, F., Zhou, L. X., Novelli, P. C., Worthy, D. E. J., Zellweger, C., Klausen, J., Ernst, M., Steinbacher, M., Cai, Y. X., Xu, L., Fang, S. X., and Yao, B.: Evaluation of in situ measurements of atmospheric carbon monoxide at Mount Waliguan, China, *Atmos. Chem. Phys.*, 11, 5195–5206, <https://doi.org/10.5194/acp-11-5195-2011>, 2011.
- Zhang, L., Jin, L., Zhao, T., Yin, Y., Zhu, B., Shan, Y., Guo, X., Tan, C., Gao, J., and Wang, H.: Diurnal variation of surface ozone in mountainous areas: Case study of Mt. Huang, East China, *Sci. Total Environ.*, 538, 583–590, 2015.
- Zhu, B., Akimoto, H., Wang, Z., Sudo, K., Tang, J., and Uno, I.: Why does surface ozone peak in summertime at Waliguan?, *Geophys. Res. Lett.*, 31, L17104, <https://doi.org/10.1029/2004GL020609>, 2004.