

Supplement of Atmos. Chem. Phys., 16, 9693–9710, 2016
<http://www.atmos-chem-phys.net/16/9693/2016/>
doi:10.5194/acp-16-9693-2016-supplement
© Author(s) 2016. CC Attribution 3.0 License.



Atmospheric
Chemistry
and Physics
Open Access
EGU

Supplement of

On the simultaneous deployment of two single-particle mass spectrometers at an urban background and a roadside site during SAPUSS

Manuel Dall'Osto et al.

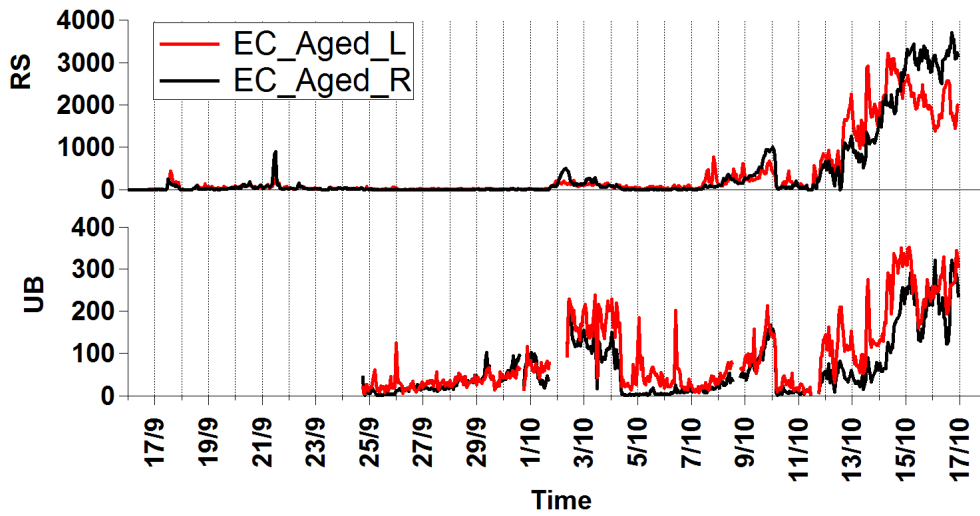
Correspondence to: Manuel Dall'Osto (dallosto@icm.csic.es)

The copyright of individual parts of the supplement might differ from the CC-BY 3.0 licence.

1

2

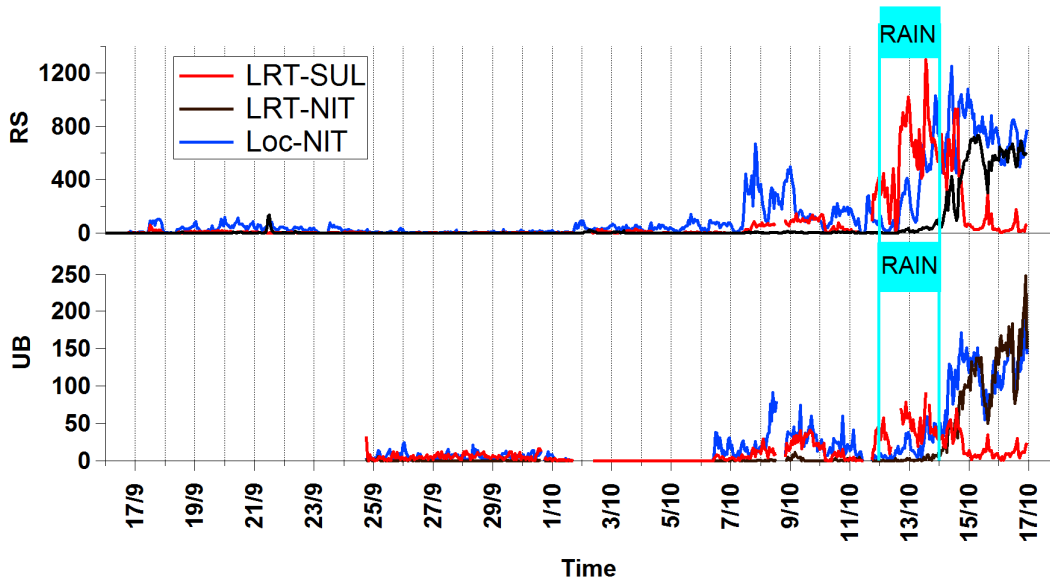
3



4

5

(a)



6

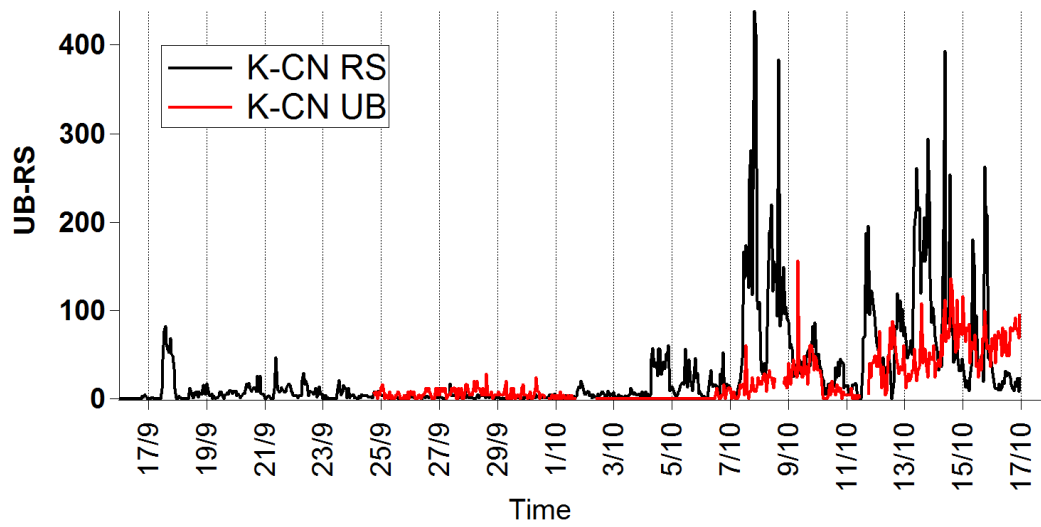
7

8

(b)

1

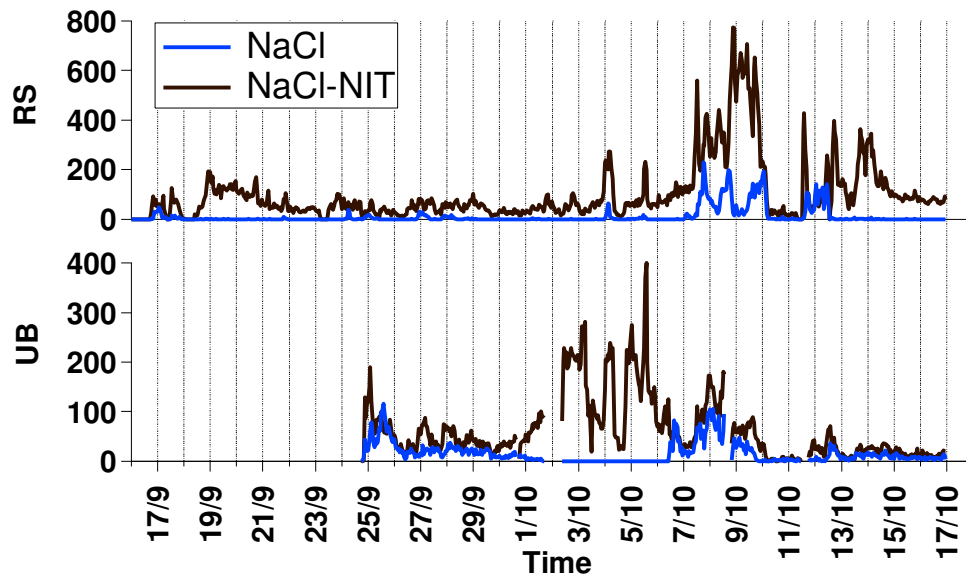
2



3

4

(c)



5

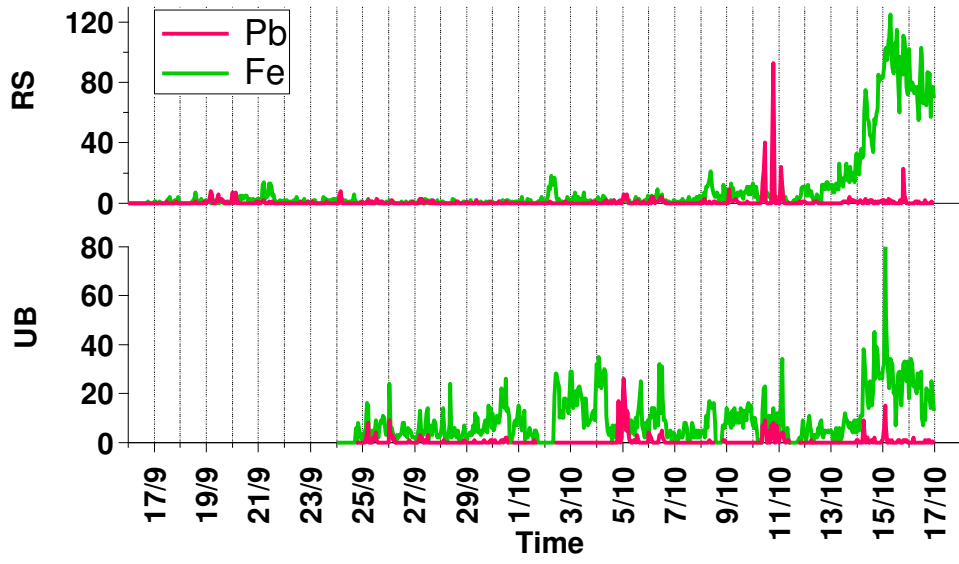
6

7

8

(d)

1

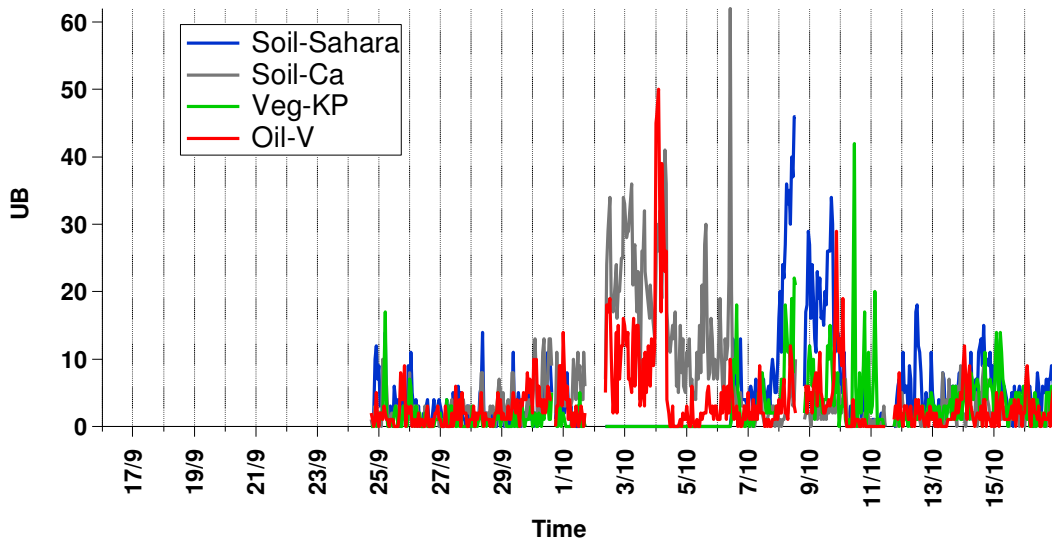


2

3

4

(e)

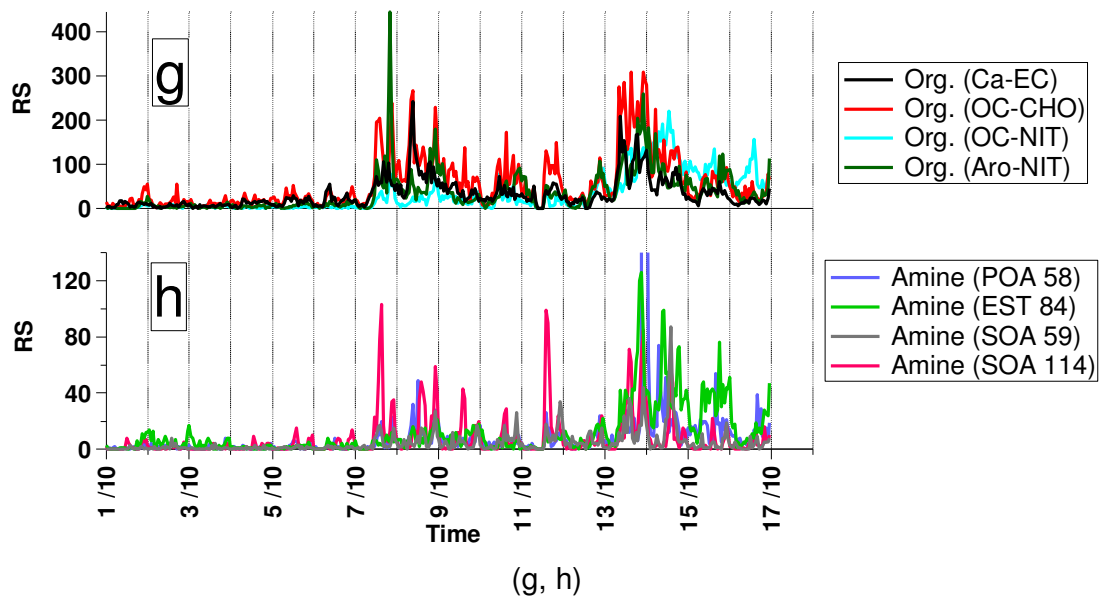


5

6

7

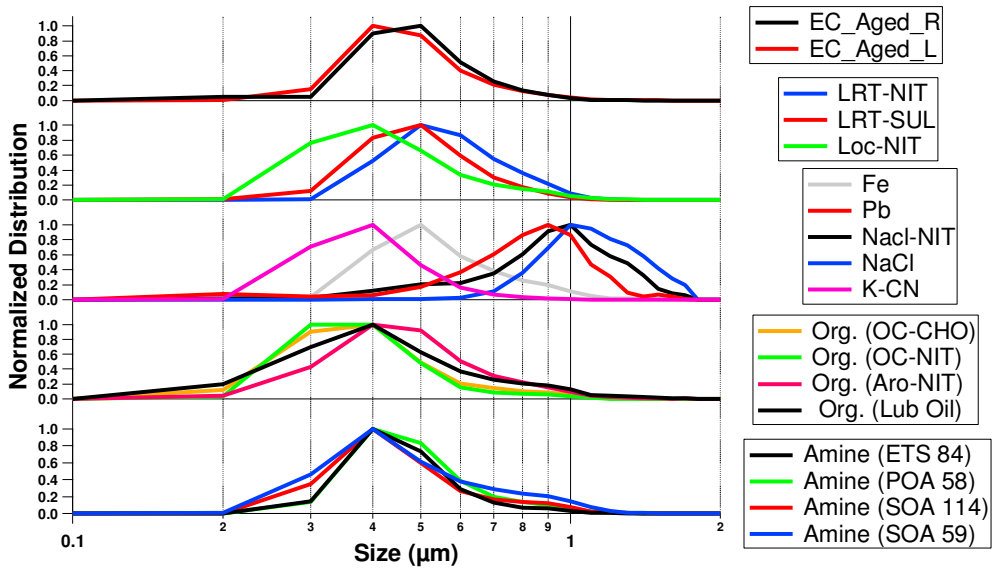
(f)



1
2
3
4
5
6
7
8
9
10
11
12
13
14
15

Figure SI 1. Temporal trends of ATOFMS particle types

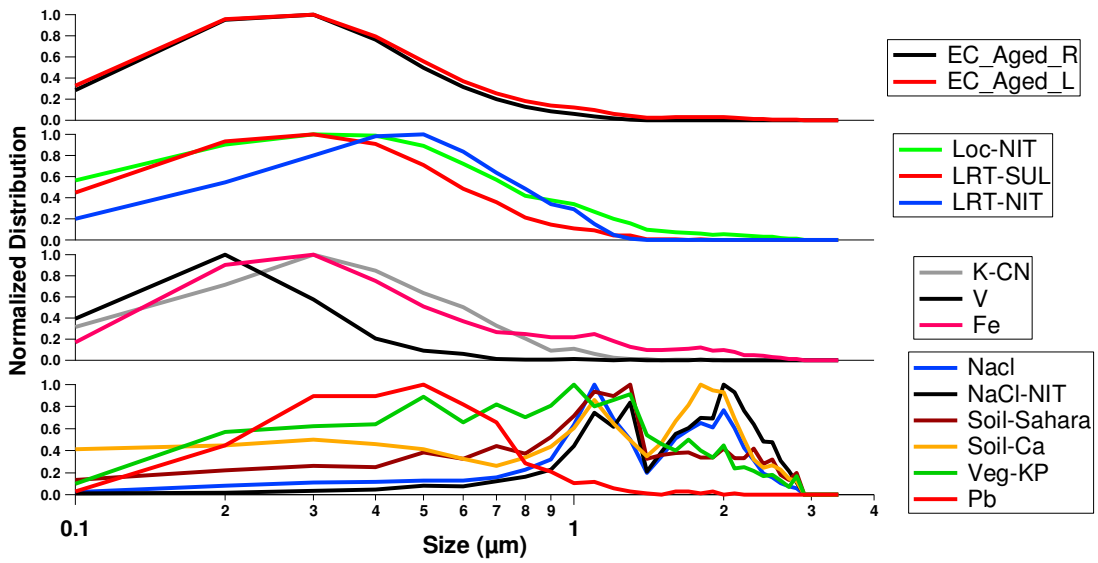
1



2

3

(a)



4

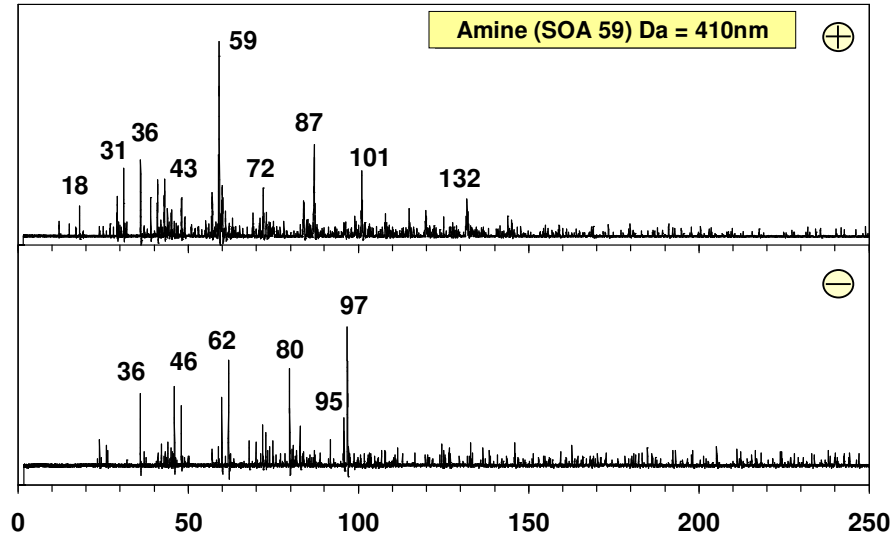
5

(b)

6

7 SI 2. Aerodynamic size ATOFMS modes for ATOFMS at RS (a) and UB (b)

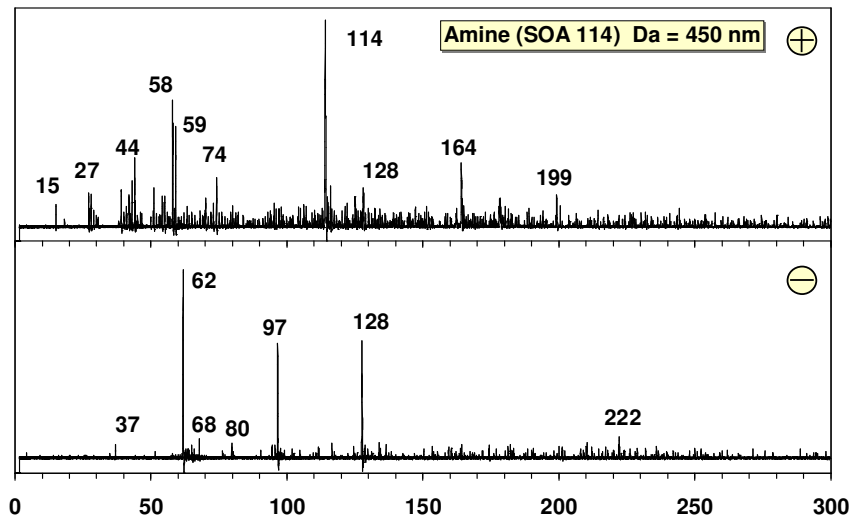
8



1

2 (a) Amine (SOA 59)

3



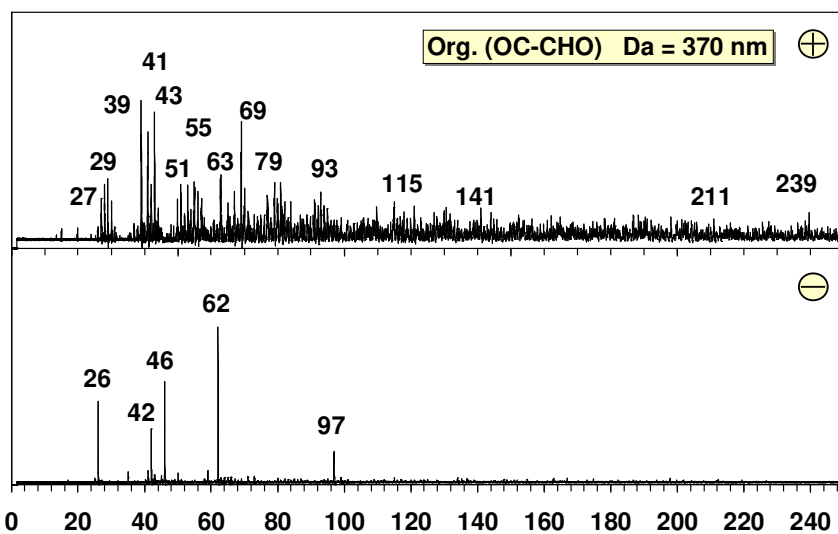
4

5 (b) Amine (SOA 114)

6

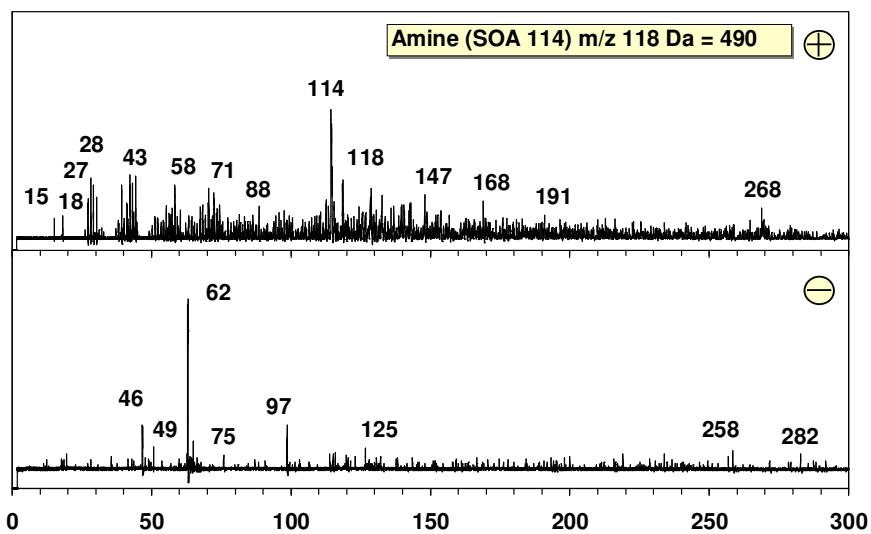
7

1



2

3 (c) Org. (OC-CHO)



4

5 (d) Amine (SOA 114) with m/z 118

6

7 SI 3 a-d: Single particle mass spectra of selected ATOFMS particle types

8