



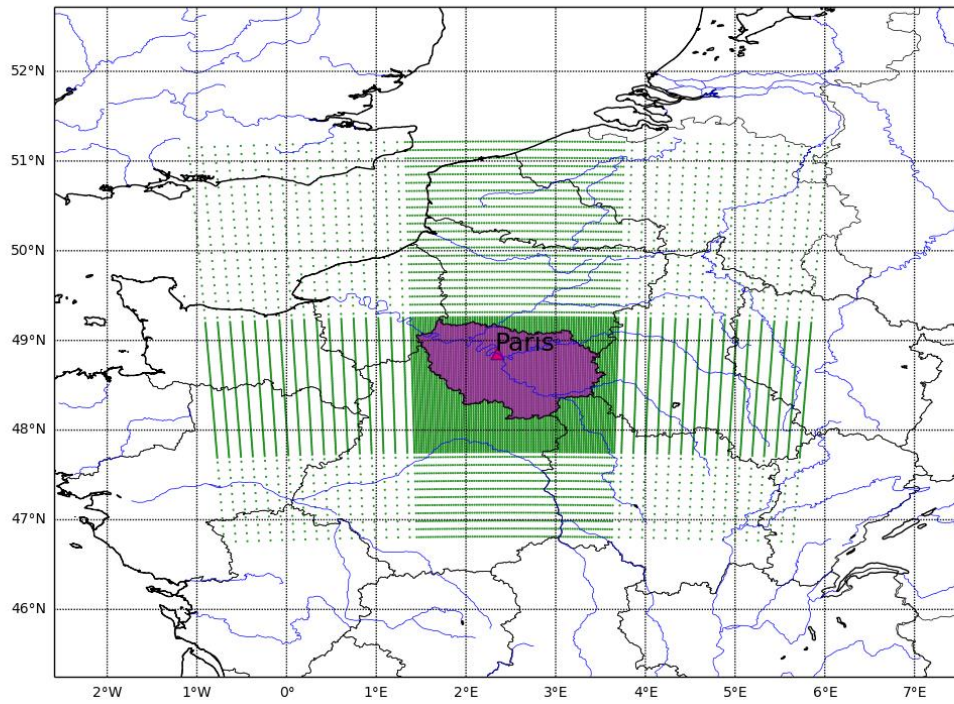
Supplement of

What would dense atmospheric observation networks bring to the quantification of city CO₂ emissions?

Lin Wu et al.

Correspondence to: Lin Wu (lwu@lsce.ipsl.fr)

The copyright of individual parts of the supplement might differ from the CC-BY 3.0 licence.



1 Supplementary Figure S1 Domain of inversion in our study. The triangle in red marks out a
 2 point in central Paris, the central area in magenta shows the IDF region, and the green dots
 3 show the CHIMERE model grid at 2 km resolution for the central area covering IDF and its
 4 vicinity and at 2 km × 10 km to 10 km × 10 km resolution over the rest of the domain.