

Supplement of Atmos. Chem. Phys., 16, 15653–15664, 2016
<http://www.atmos-chem-phys.net/16/15653/2016/>
doi:10.5194/acp-16-15653-2016-supplement
© Author(s) 2016. CC Attribution 3.0 License.



Atmospheric
Chemistry
and Physics
Open Access
EGU

Supplement of

Exploiting stagnant conditions to derive robust emission ratio estimates for CO₂, CO and volatile organic compounds in Paris

Lamia Ammoura et al.

Correspondence to: L. Ammoura (lamia.ammoura@lsce.ipsl.fr)

The copyright of individual parts of the supplement might differ from the CC-BY 3.0 licence.

Additional time series:

Figure 1 shows typical time series of the atmospheric gases mole fractions collected during the MEGAPOLI/CO₂-Megapolis campaign with a time step of 30 min. Wind speed is also represented.

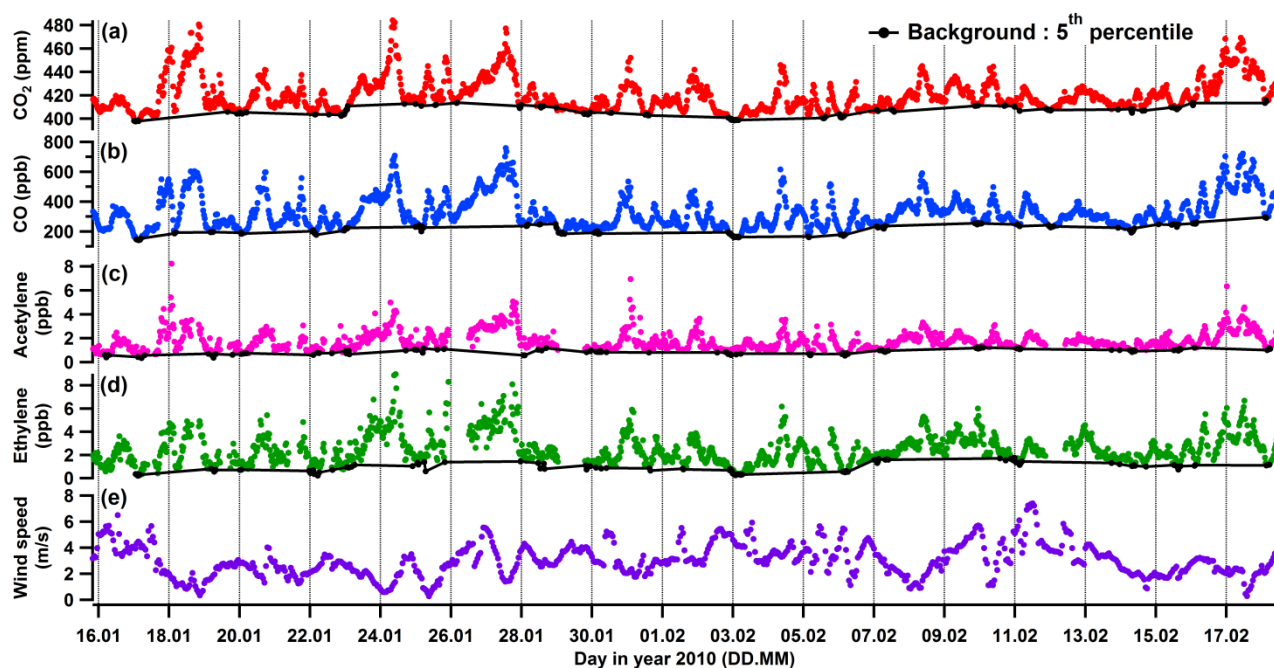
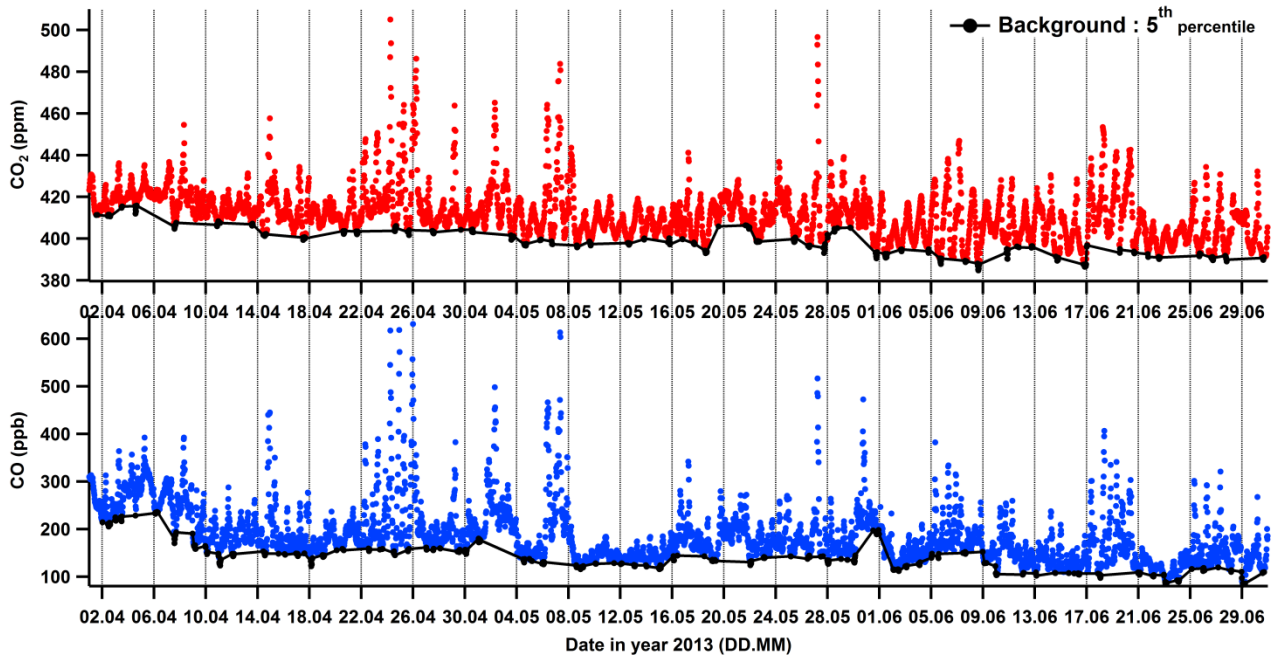
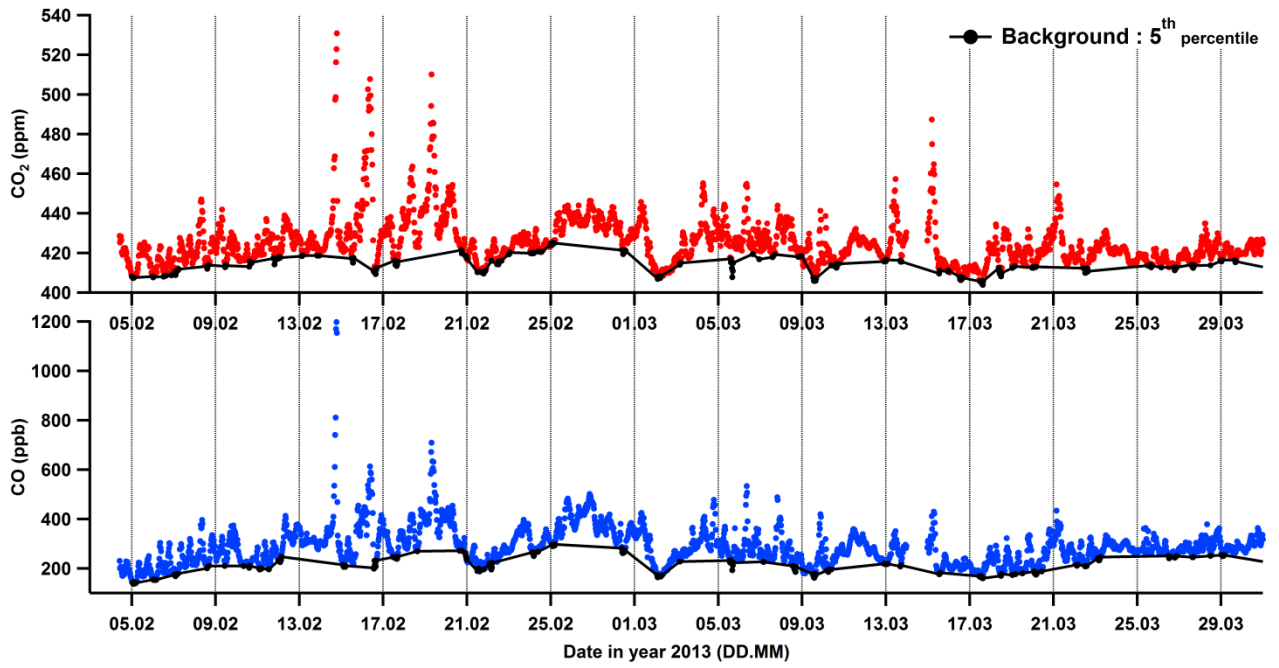
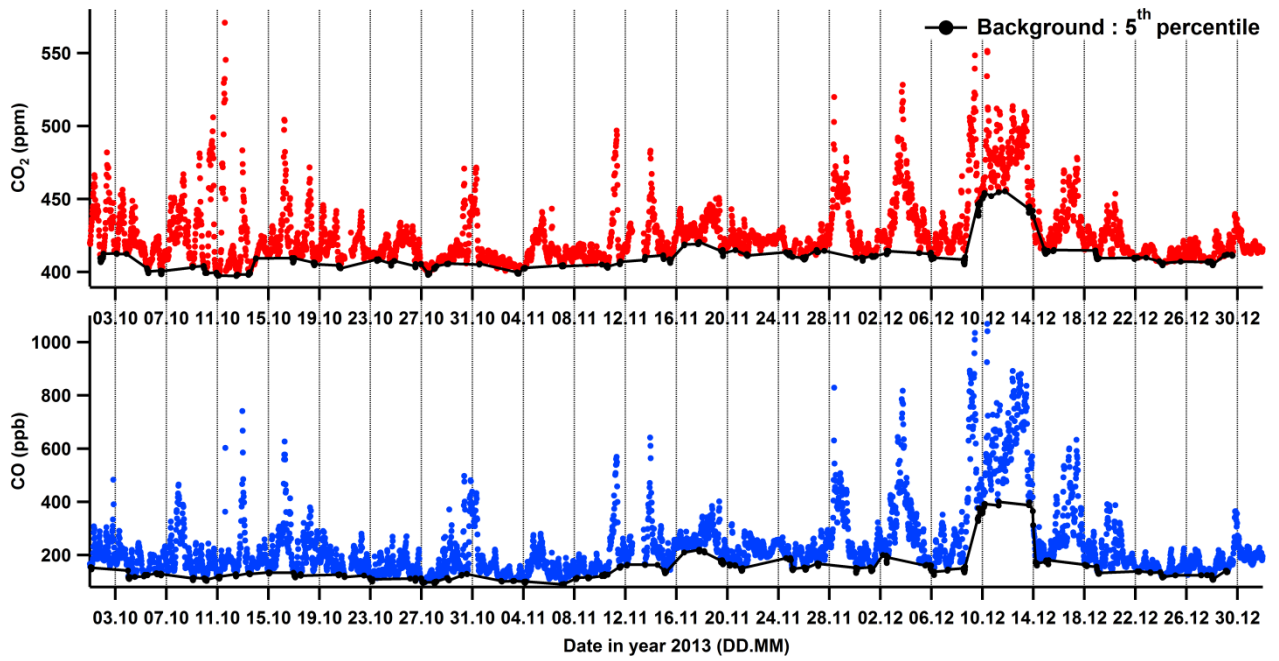
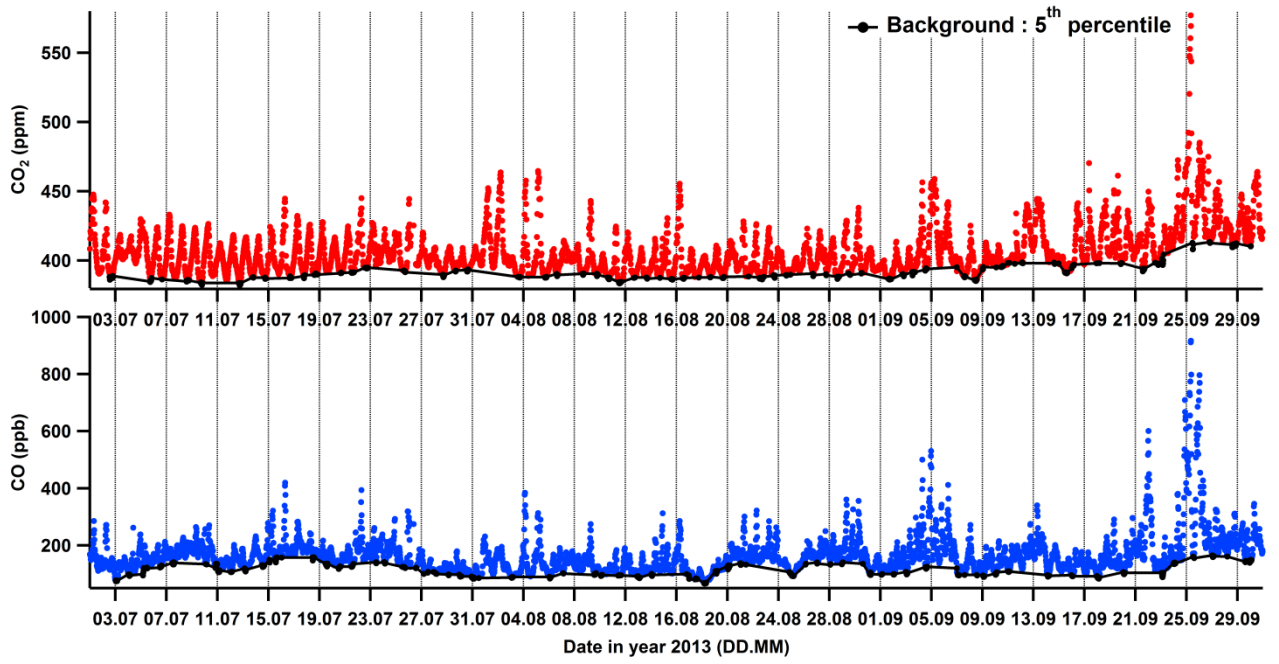


Fig. 1: (a-d) Time series (in time UTC) of observations collected during the MEGAPOLI/CO₂-Megapolis campaign: (a-d) mole fractions of selected compounds (the black lines represent the different species background levels defined with the calculation of the 5th percentile shown as black disks); (e) wind speed.

Figure 2 shows the continuous measurements of CO₂ and CO in Jussieu collected between February 2013 and June 2014.





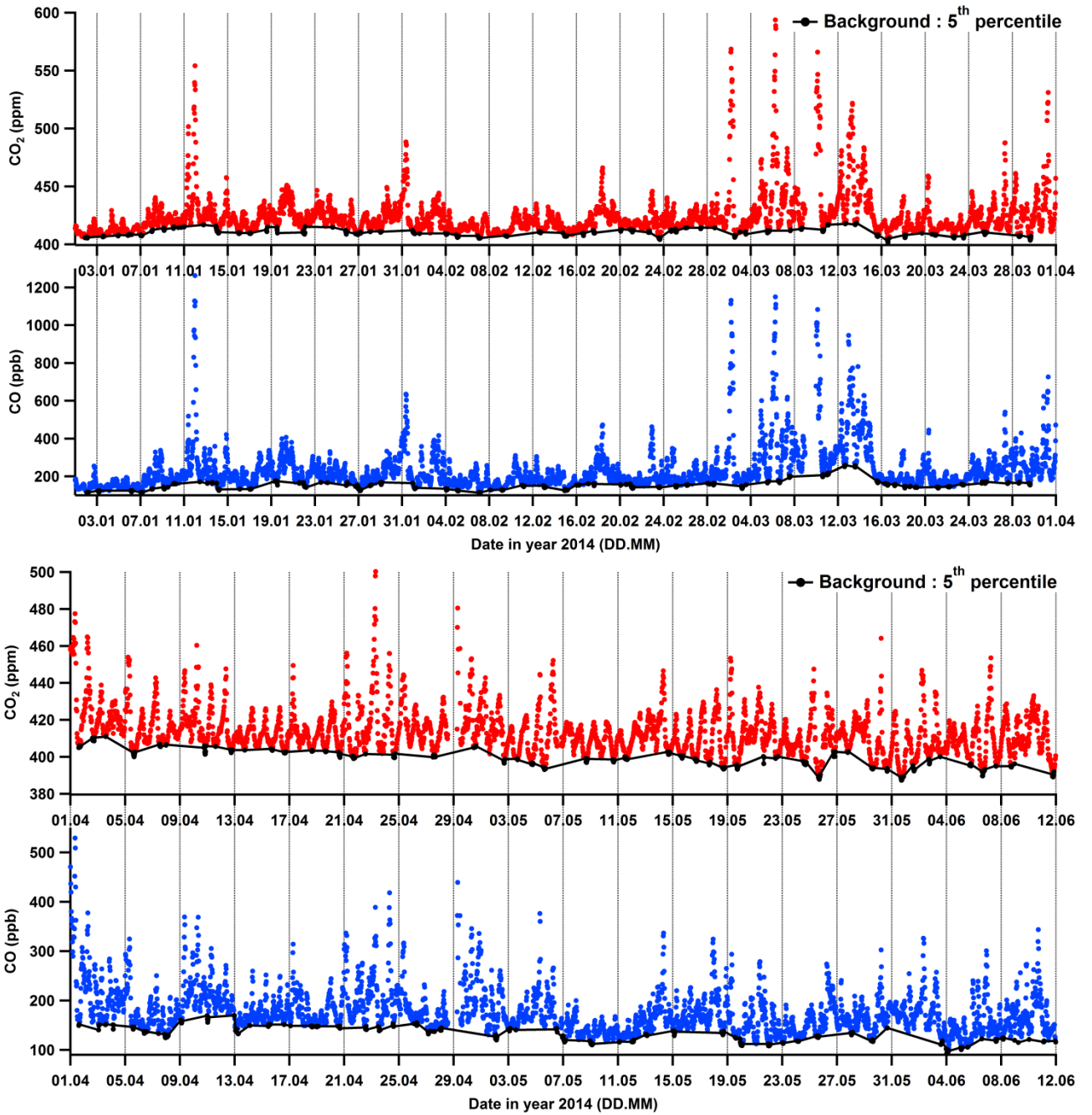


Fig. 2: Temporal variation (with time given in UTC) of the CO₂ and CO mole fractions collected in Jussieu between February 2013 and June 2014. The black lines represent the different species background levels defined with the calculation of the 5th percentile (black disks).