

Supplement of Atmos. Chem. Phys., 15, 4983–4996, 2015
<http://www.atmos-chem-phys.net/15/4983/2015/>
doi:10.5194/acp-15-4983-2015-supplement
© Author(s) 2015. CC Attribution 3.0 License.



Supplement of

Characterization of satellite-based proxies for estimating nucleation mode particles over South Africa

A.-M. Sundström et al.

Correspondence to: A.-M. Sundström (anu-maija.sundstrom@helsinki.fi)

This supplementary material includes the scatter plots for each of the comparisons presented in Table 2 in the original manuscript.

Table 2, column 1:

In situ $(\text{NO}_x - \text{NO})/\text{CS}$ vs. satellite NO_2/AOD

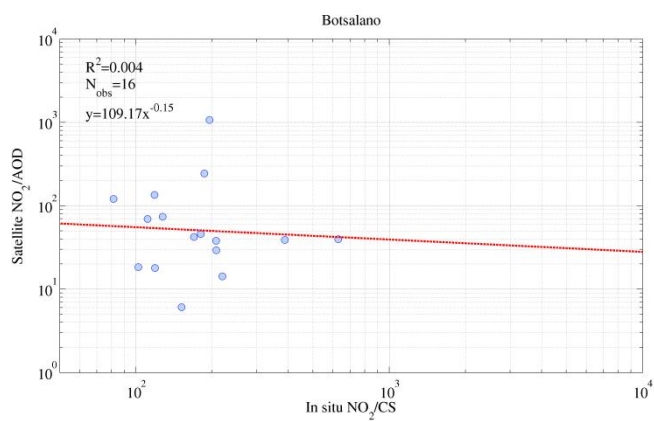
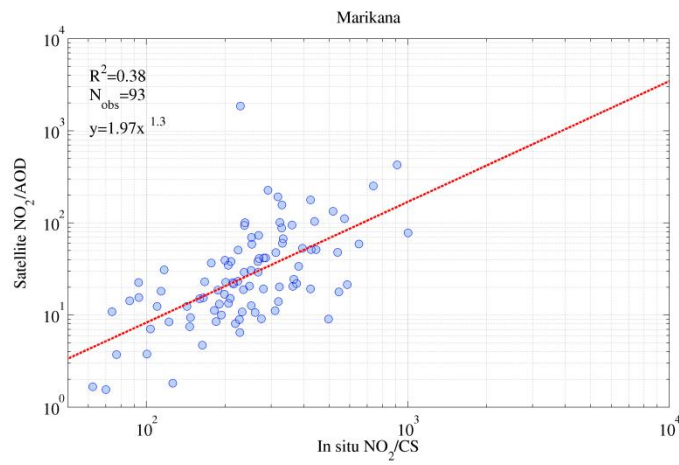
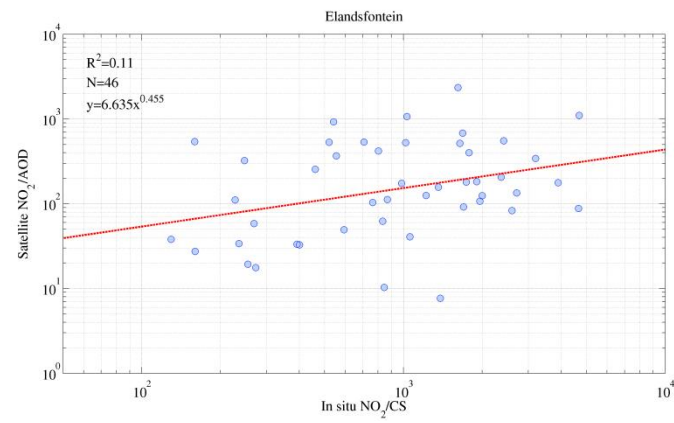


Table 2, column 2:

In situ SO₂/CS vs. satellite SO₂/AOD

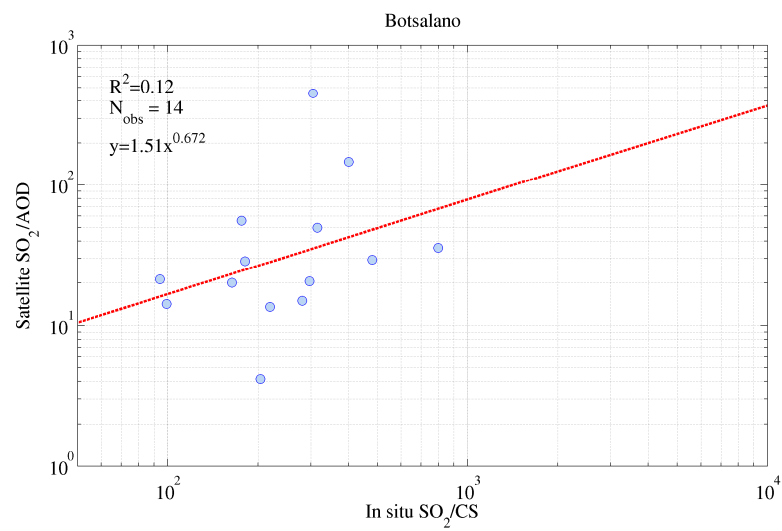
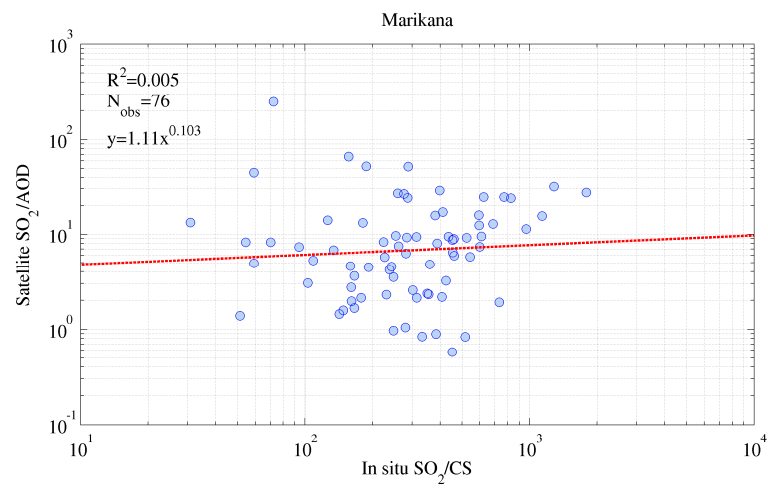
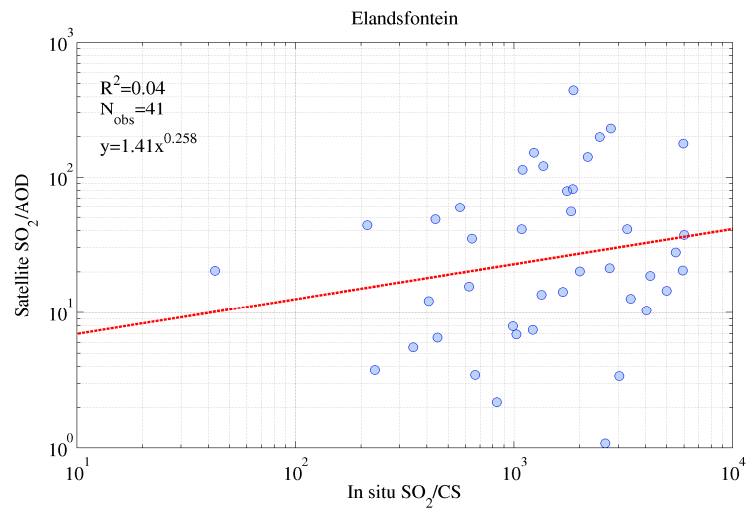


Table 2, column3:

In situ $\text{SO}_2 \cdot \text{UV} / \text{CS}^2$ vs. satellite $\text{SO}_2 \cdot \text{UV} / \text{AOD}^2$

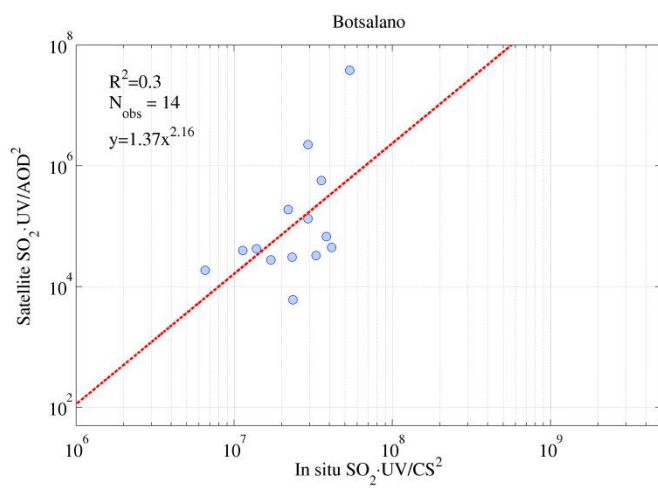
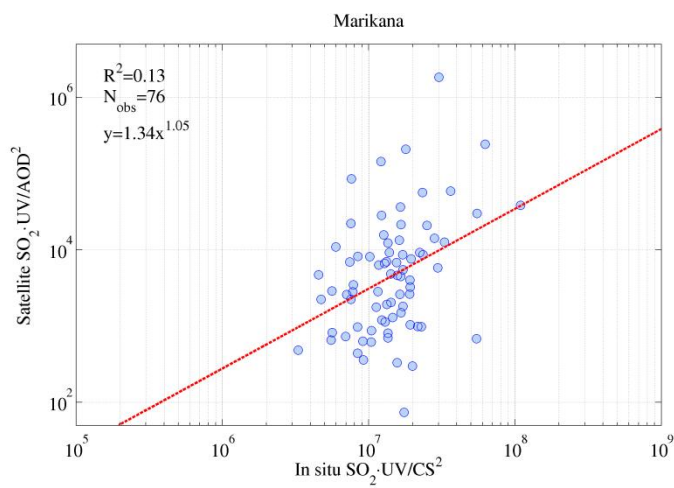
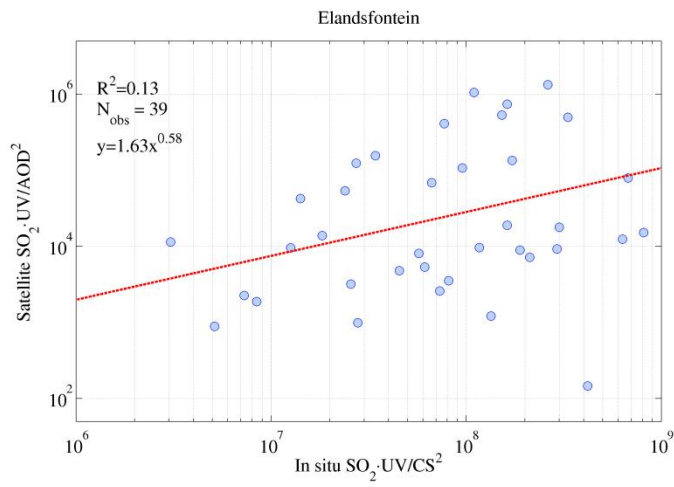


Table 2, column4:

In situ UV/CS² vs. satellite UV/AOD²

