

Supplement of Atmos. Chem. Phys., 15, 363–373, 2015
<http://www.atmos-chem-phys.net/15/363/2015/>
doi:10.5194/acp-15-363-2015-supplement
© Author(s) 2015. CC Attribution 3.0 License.



Supplement of

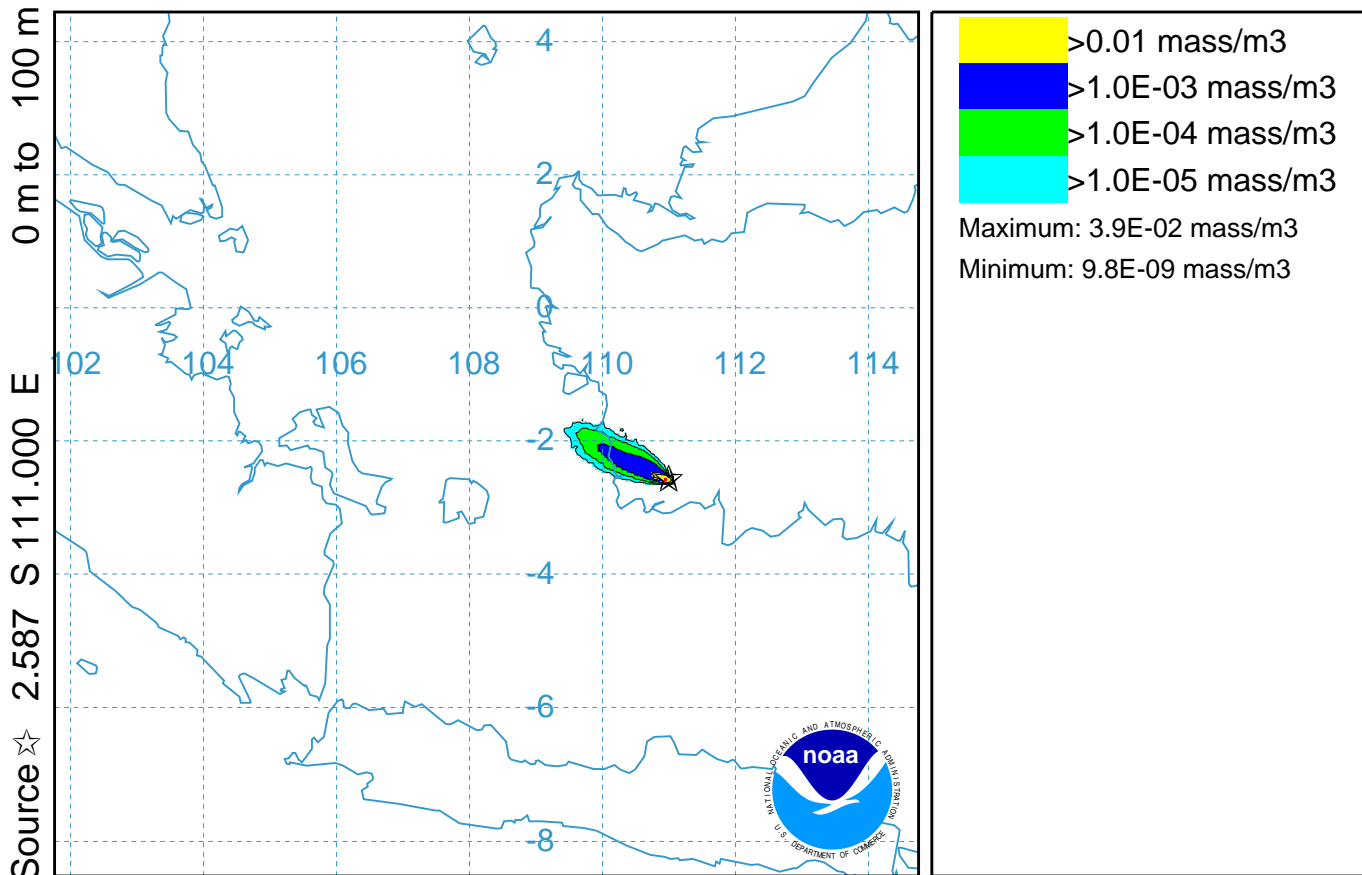
Importance of transboundary transport of biomass burning emissions to regional air quality in Southeast Asia during a high fire event

B. Aouizerats et al.

Correspondence to: B. Aouizerats (benjamin.aouizerats@vu.nl)

NOAA HYSPLIT MODEL

Concentration (mass/m³) averaged between 0 m and 100 m
Integrated from 1400 15 Oct to 0200 16 Oct 06 (UTC)
PM25 Release started at 1400 15 Oct 06 (UTC)

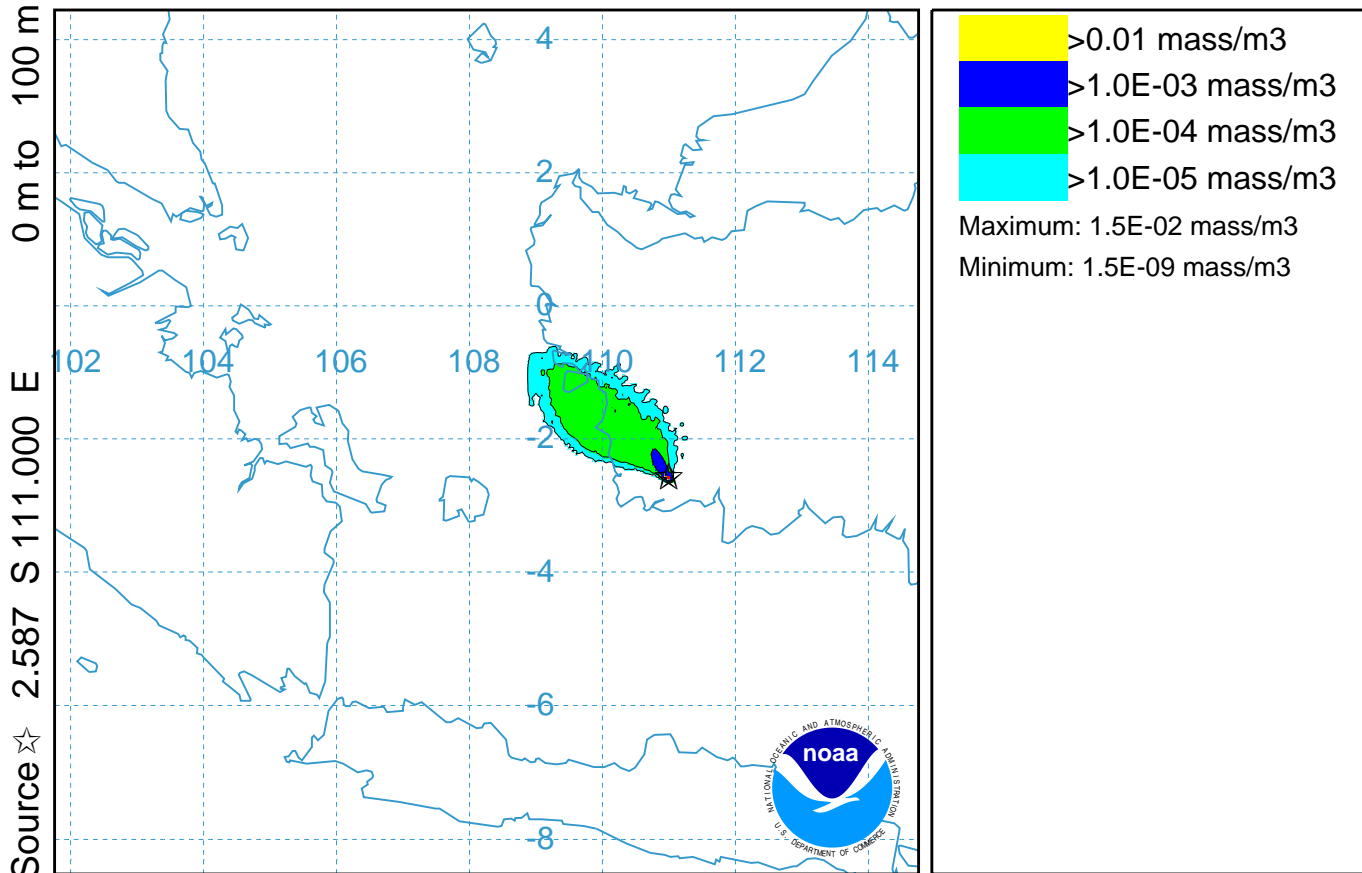


GDAS METEOROLOGICAL DATA

Job ID: 21377 Job Start: Wed Nov 5 12:22:50 UTC 2014
Release: lat.: -2.587000 lon.: 111.000000 Hgt: 0 to 100 m
Pollutant: PM25 - Unspecified
Release Quantity: 10000000000 mass Start: 06 10 15 14 0 Duration: 84 hrs, 0 m
Pollutant Averaging/Integration Period: 12 hrs and 0 min
Dry Deposition rate: 0.1 cm/s Wet Removal: None #Part: 94000
Meteorology: 0000Z 15 Oct 2006 - GDAS1
This is not a NOAA product. It was produced by: unknown

NOAA HYSPLIT MODEL

Concentration (mass/m³) averaged between 0 m and 100 m
Integrated from 0200 16 Oct to 1400 16 Oct 06 (UTC)
PM25 Release started at 1400 15 Oct 06 (UTC)

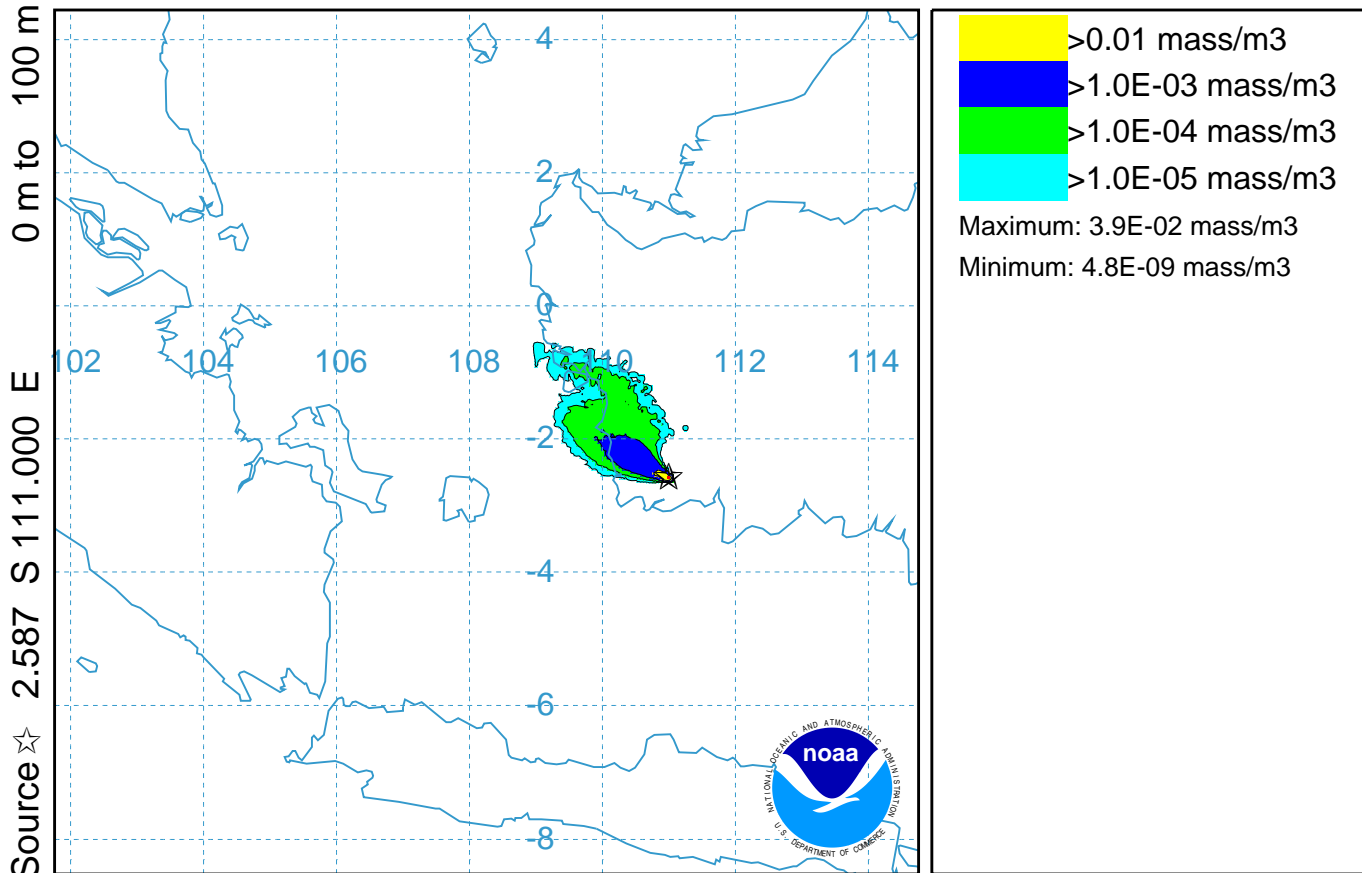


GDAS METEOROLOGICAL DATA

Job ID: 21377 Job Start: Wed Nov 5 12:22:50 UTC 2014
Release: lat.: -2.587000 lon.: 111.000000 Hgt: 0 to 100 m
Pollutant: PM25 - Unspecified
Release Quantity: 10000000000 mass Start: 06 10 15 14 0 Duration: 84 hrs, 0 m
Pollutant Averaging/Integration Period: 12 hrs and 0 min
Dry Deposition rate: 0.1 cm/s Wet Removal: None #Part: 94000
Meteorology: 0000Z 15 Oct 2006 - GDAS1
This is not a NOAA product. It was produced by: unknown

NOAA HYSPLIT MODEL

Concentration (mass/m³) averaged between 0 m and 100 m
Integrated from 1400 16 Oct to 0200 17 Oct 06 (UTC)
PM25 Release started at 1400 15 Oct 06 (UTC)

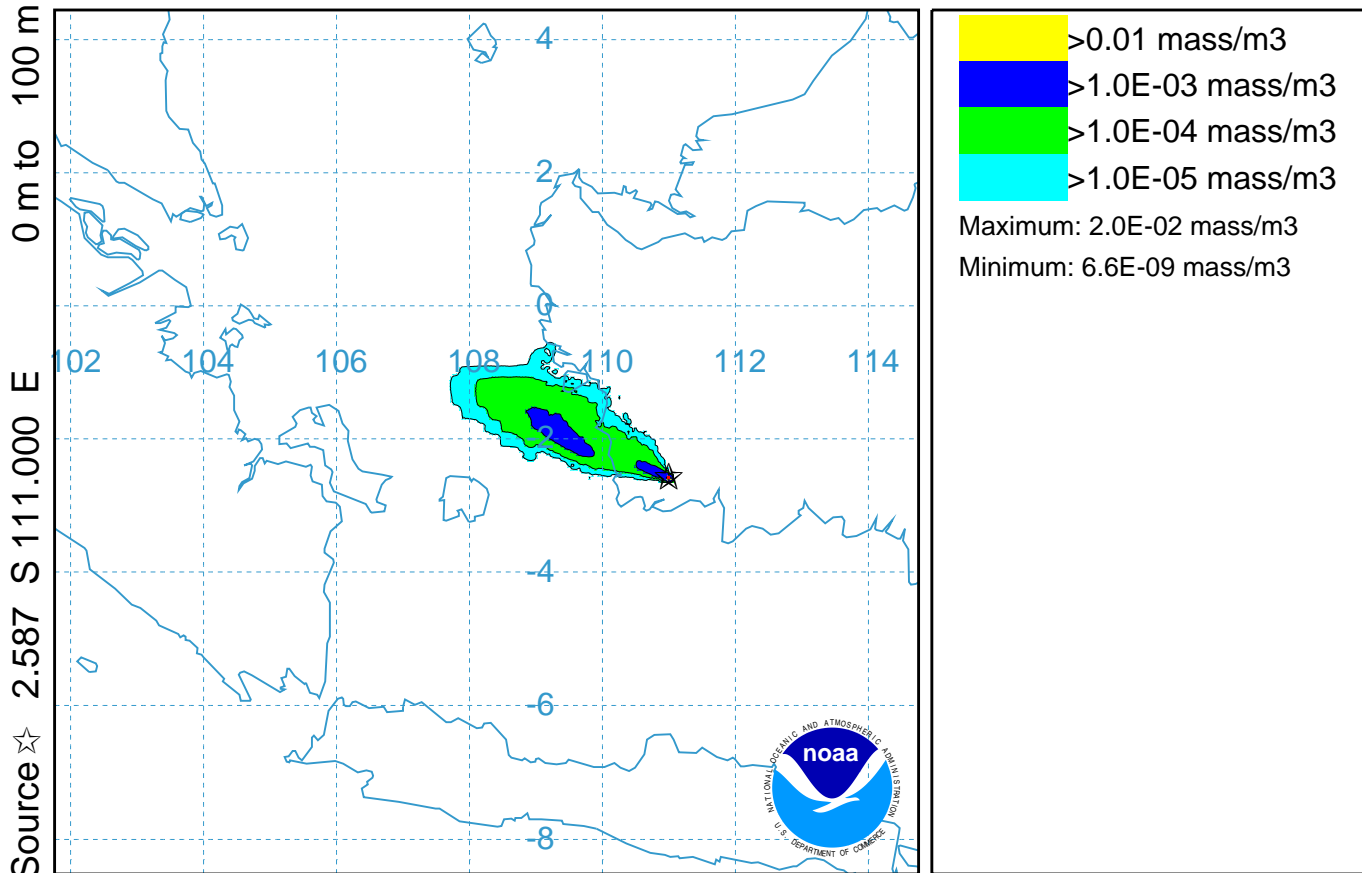


GDAS METEOROLOGICAL DATA

Job ID: 21377 Job Start: Wed Nov 5 12:22:50 UTC 2014
Release: lat.: -2.587000 lon.: 111.000000 Hgt: 0 to 100 m
Pollutant: PM25 - Unspecified
Release Quantity: 10000000000 mass Start: 06 10 15 14 0 Duration: 84 hrs, 0 m
Pollutant Averaging/Integration Period: 12 hrs and 0 min
Dry Deposition rate: 0.1 cm/s Wet Removal: None #Part: 94000
Meteorology: 0000Z 15 Oct 2006 - GDAS1
This is not a NOAA product. It was produced by: unknown

NOAA HYSPLIT MODEL

Concentration (mass/m³) averaged between 0 m and 100 m
Integrated from 0200 17 Oct to 1400 17 Oct 06 (UTC)
PM25 Release started at 1400 15 Oct 06 (UTC)

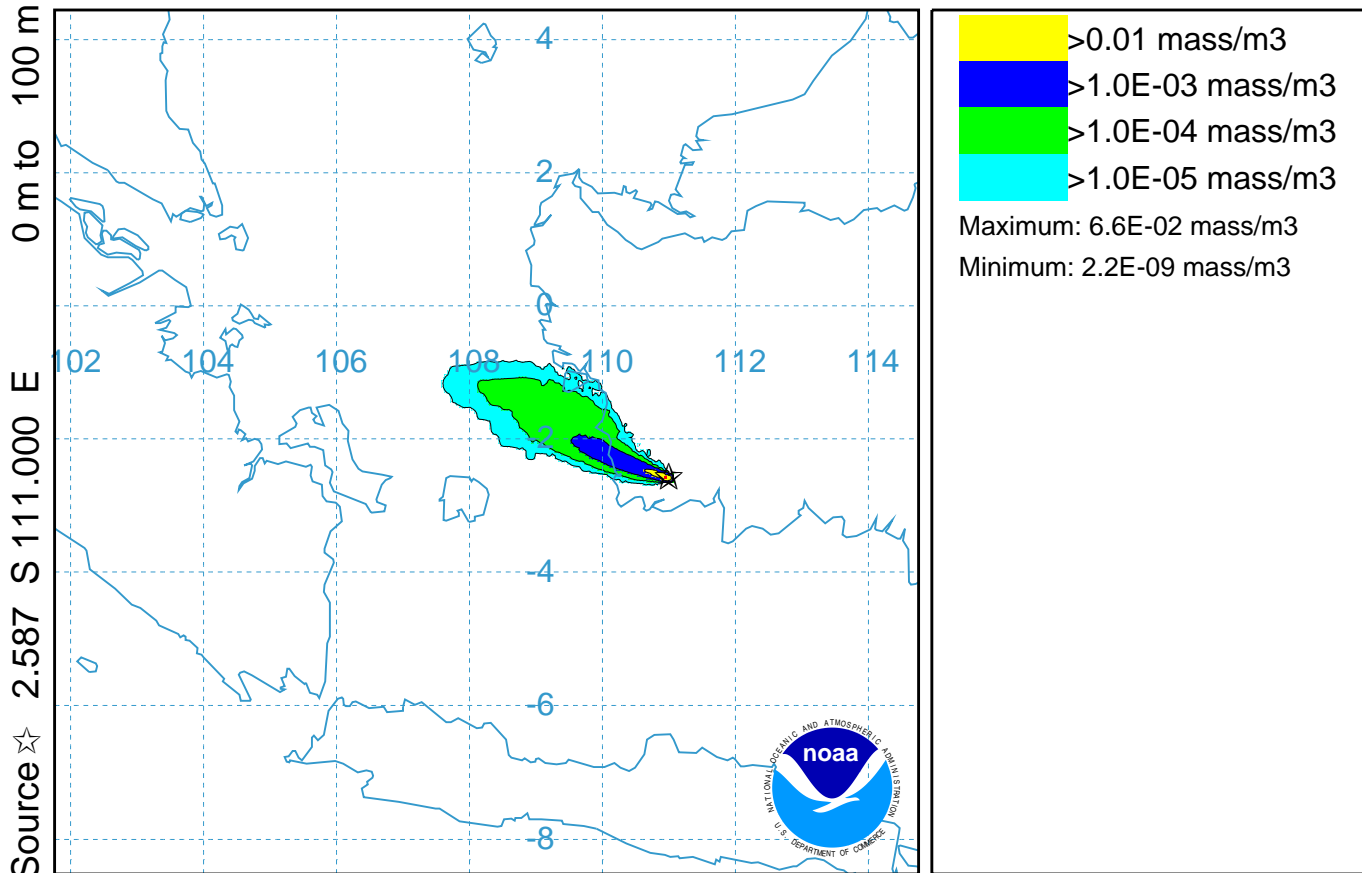


GDAS METEOROLOGICAL DATA

Job ID: 21377 Job Start: Wed Nov 5 12:22:50 UTC 2014
Release: lat.: -2.587000 lon.: 111.000000 Hgt: 0 to 100 m
Pollutant: PM25 - Unspecified
Release Quantity: 10000000000 mass Start: 06 10 15 14 0 Duration: 84 hrs, 0 m
Pollutant Averaging/Integration Period: 12 hrs and 0 min
Dry Deposition rate: 0.1 cm/s Wet Removal: None #Part: 94000
Meteorology: 0000Z 15 Oct 2006 - GDAS1
This is not a NOAA product. It was produced by: unknown

NOAA HYSPLIT MODEL

Concentration (mass/m³) averaged between 0 m and 100 m
Integrated from 1400 17 Oct to 0200 18 Oct 06 (UTC)
PM25 Release started at 1400 15 Oct 06 (UTC)

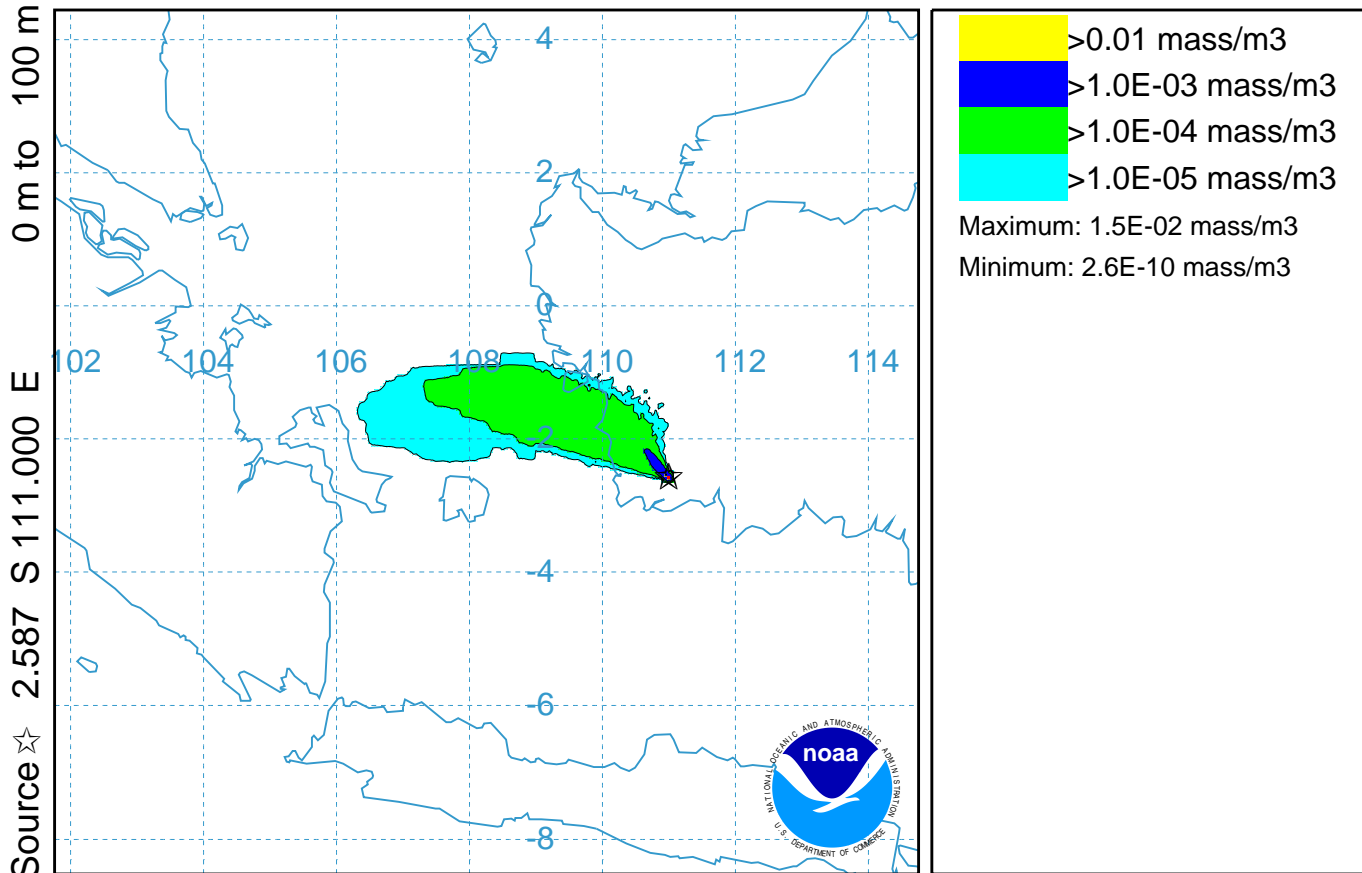


GDAS METEOROLOGICAL DATA

Job ID: 21377 Job Start: Wed Nov 5 12:22:50 UTC 2014
Release: lat.: -2.587000 lon.: 111.000000 Hgt: 0 to 100 m
Pollutant: PM25 - Unspecified
Release Quantity: 10000000000 mass Start: 06 10 15 14 0 Duration: 84 hrs, 0 m
Pollutant Averaging/Integration Period: 12 hrs and 0 min
Dry Deposition rate: 0.1 cm/s Wet Removal: None #Part: 94000
Meteorology: 0000Z 15 Oct 2006 - GDAS1
This is not a NOAA product. It was produced by: unknown

NOAA HYSPLIT MODEL

Concentration (mass/m³) averaged between 0 m and 100 m
Integrated from 0200 18 Oct to 1400 18 Oct 06 (UTC)
PM25 Release started at 1400 15 Oct 06 (UTC)

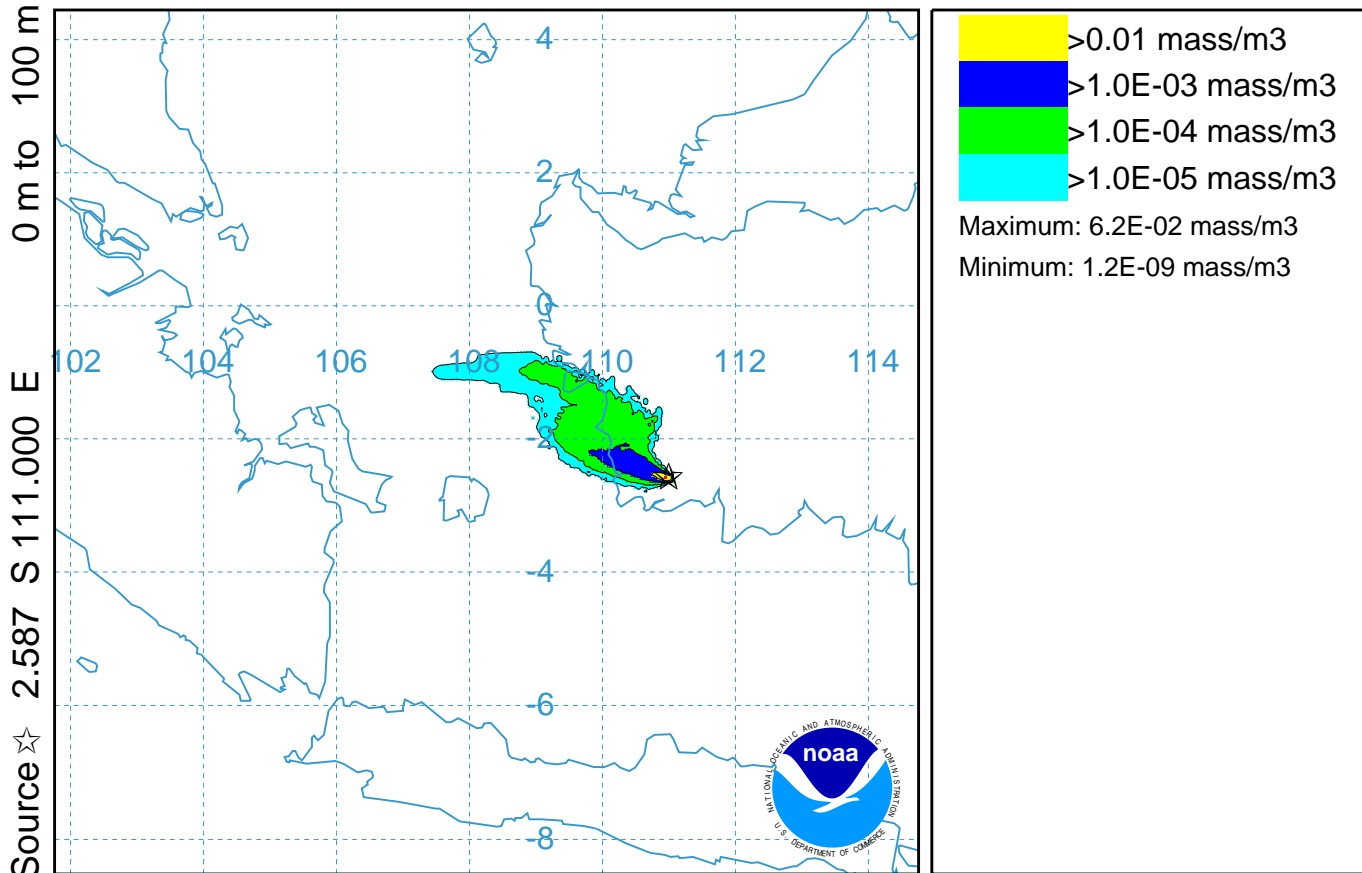


GDAS METEOROLOGICAL DATA

Job ID: 21377 Job Start: Wed Nov 5 12:22:50 UTC 2014
Release: lat.: -2.587000 lon.: 111.000000 Hgt: 0 to 100 m
Pollutant: PM25 - Unspecified
Release Quantity: 10000000000 mass Start: 06 10 15 14 0 Duration: 84 hrs, 0 m
Pollutant Averaging/Integration Period: 12 hrs and 0 min
Dry Deposition rate: 0.1 cm/s Wet Removal: None #Part: 94000
Meteorology: 0000Z 15 Oct 2006 - GDAS1
This is not a NOAA product. It was produced by: unknown

NOAA HYSPLIT MODEL

Concentration (mass/m³) averaged between 0 m and 100 m
Integrated from 1400 18 Oct to 0200 19 Oct 06 (UTC)
PM25 Release started at 1400 15 Oct 06 (UTC)



GDAS METEOROLOGICAL DATA

Job ID: 21377 Job Start: Wed Nov 5 12:22:50 UTC 2014
Release: lat.: -2.587000 lon.: 111.000000 Hgt: 0 to 100 m
Pollutant: PM25 - Unspecified
Release Quantity: 10000000000 mass Start: 06 10 15 14 0 Duration: 84 hrs, 0 m
Pollutant Averaging/Integration Period: 12 hrs and 0 min
Dry Deposition rate: 0.1 cm/s Wet Removal: None #Part: 94000
Meteorology: 0000Z 15 Oct 2006 - GDAS1
This is not a NOAA product. It was produced by: unknown