

Supplement of Atmos. Chem. Phys., 15, 11557–11570, 2015
<http://www.atmos-chem-phys.net/15/11557/2015/>
doi:10.5194/acp-15-11557-2015-supplement
© Author(s) 2015. CC Attribution 3.0 License.



Atmospheric
Chemistry
and Physics
Open Access
EGU

Supplement of

The vertical structure of cloud radiative heating over the Indian subcontinent during summer monsoon

E. Johansson et al.

Correspondence to: E. Johansson (erik.johansson@smhi.se)

The copyright of individual parts of the supplement might differ from the CC-BY 3.0 licence.

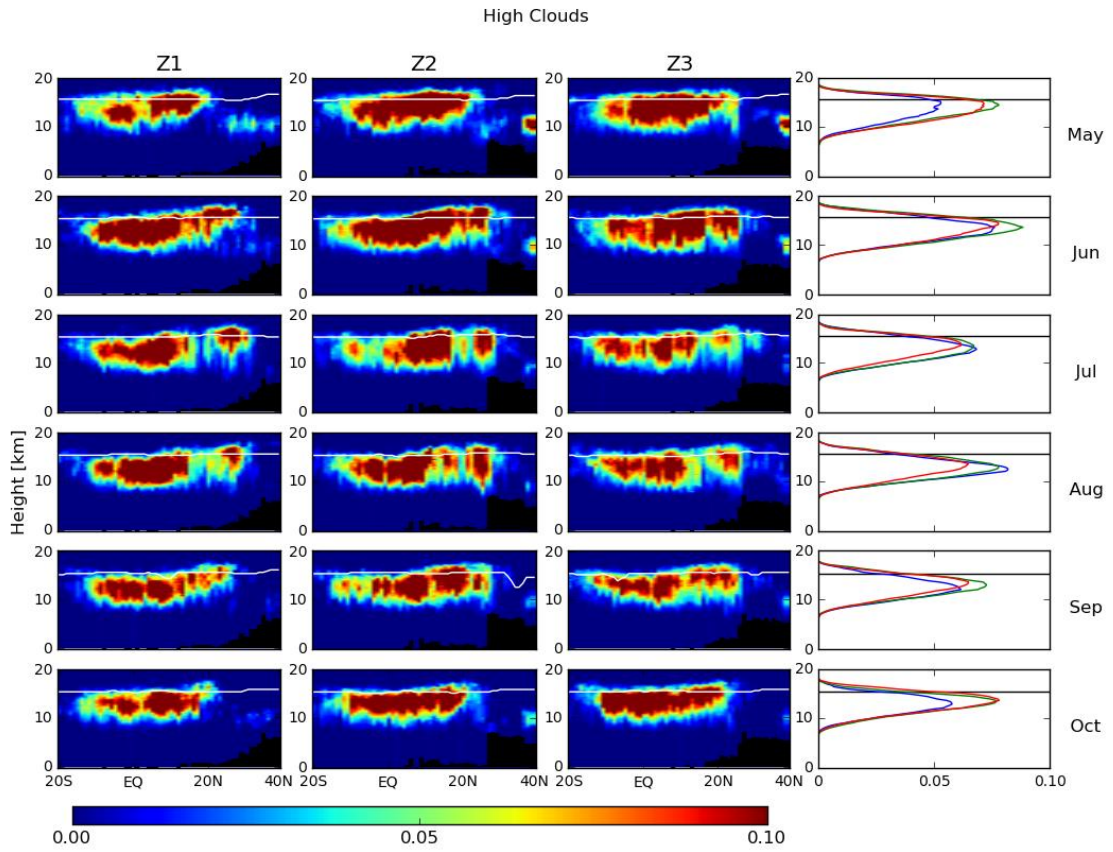


Fig. S1: The vertical fraction of high clouds. The rightmost column shows vertical distribution of clouds averaged over the entire zone for Z1 (blue), Z2 (green) and Z3 (red).

Deep Convection

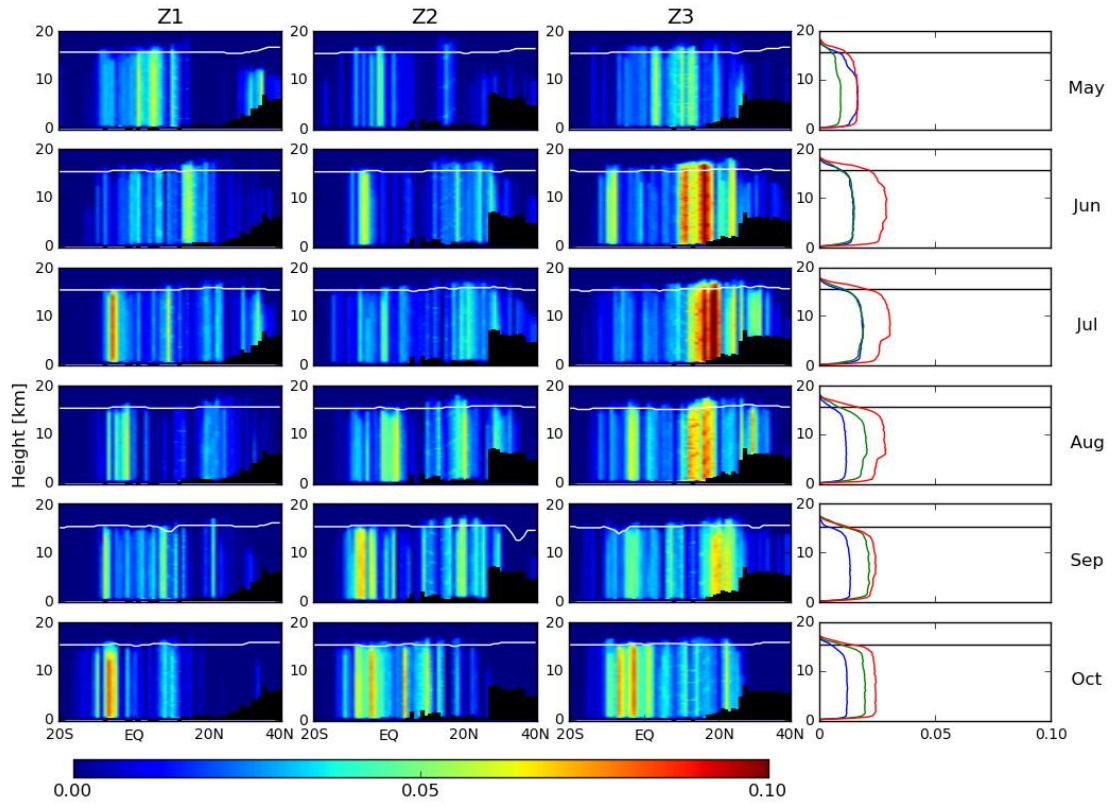


Fig. S2: The vertical fraction of deep convective clouds.

Stratiform Clouds

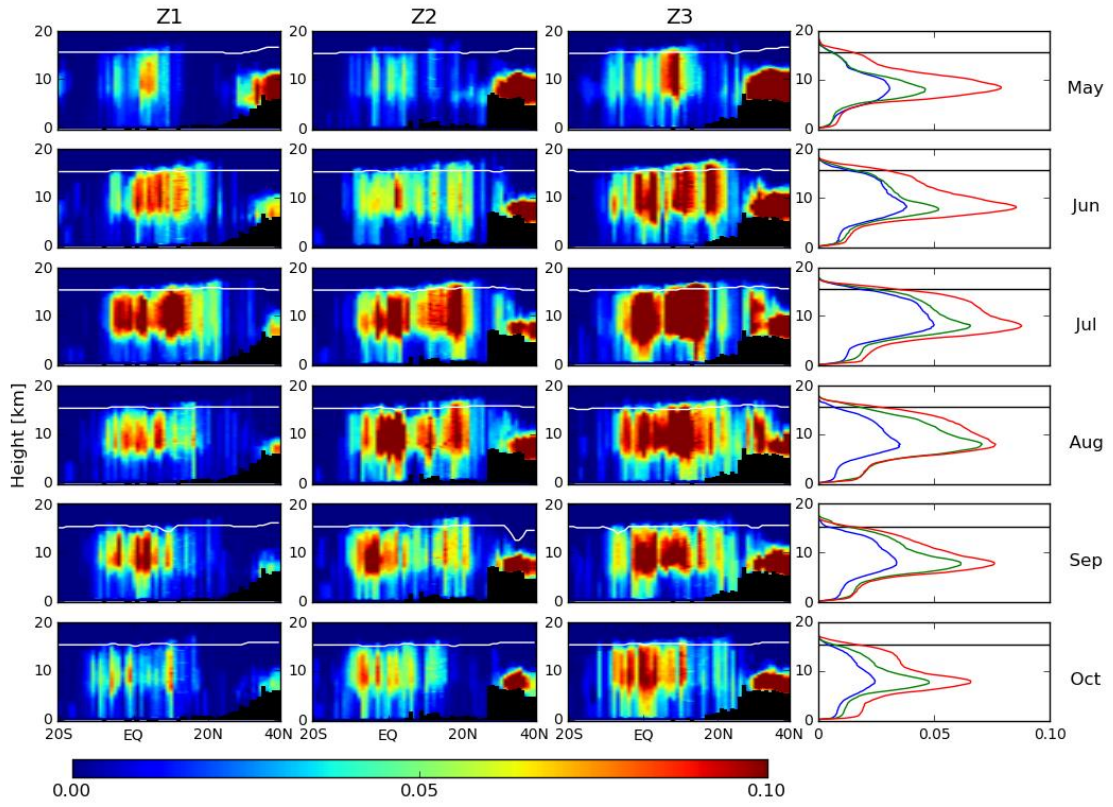


Fig. S3: The vertical fraction of alto- and nimbostratus clouds.

High Clouds

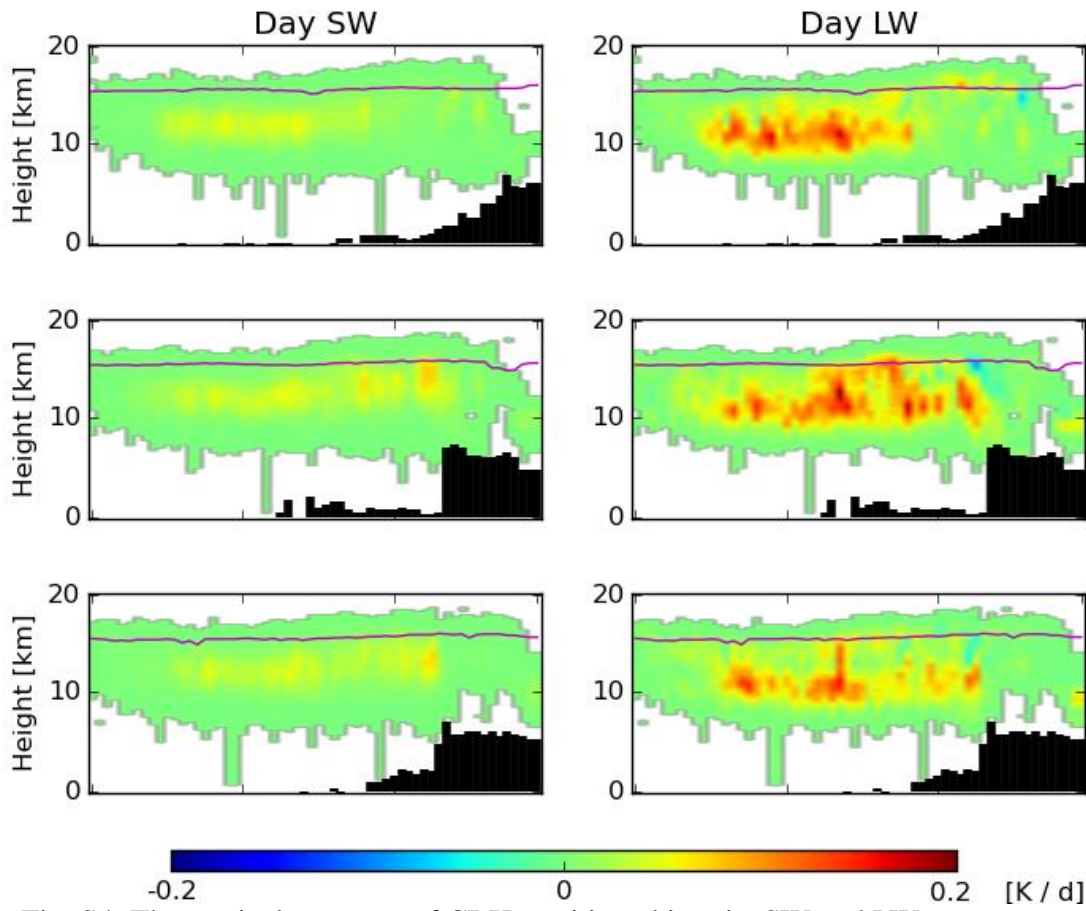


Fig. S4: The vertical structure of CRH partitioned into its SW and LW components for high clouds.

Deep Convection

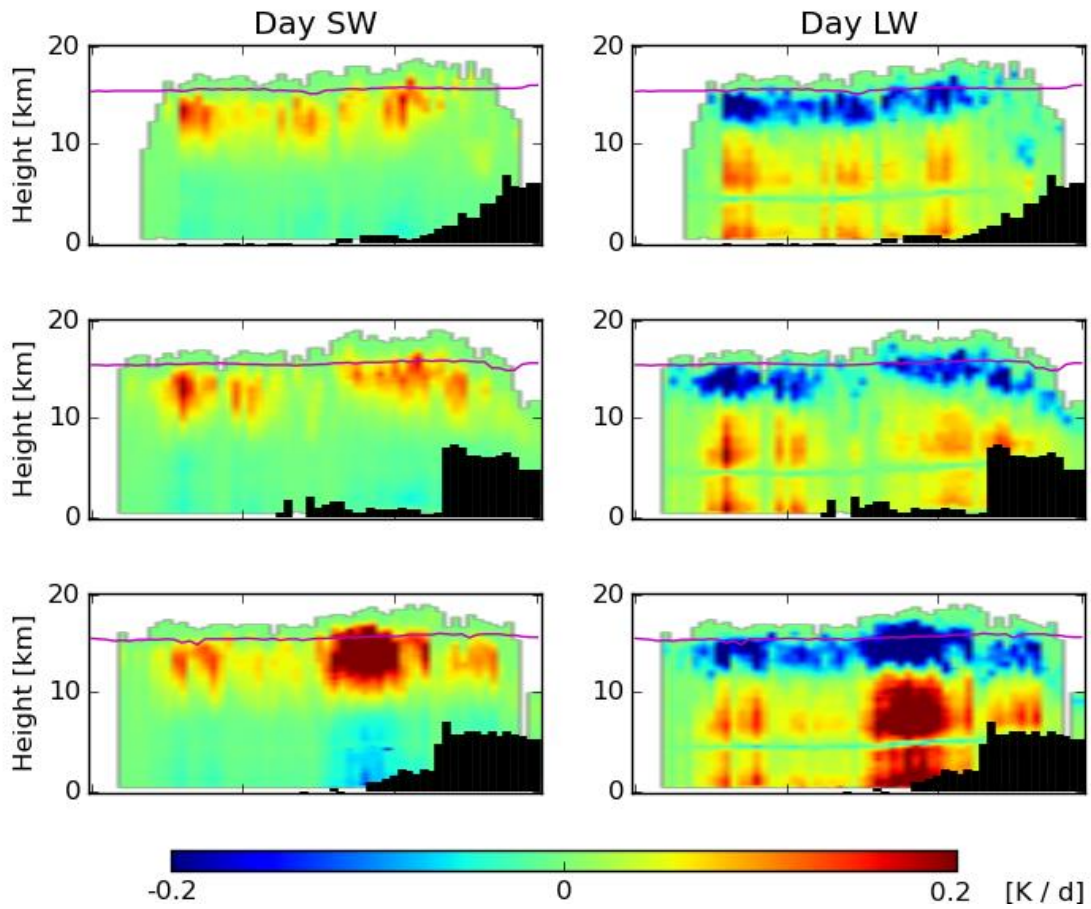


Fig. S5: Same as in Fig. S4, but for deep convective clouds.

Stratiform Clouds

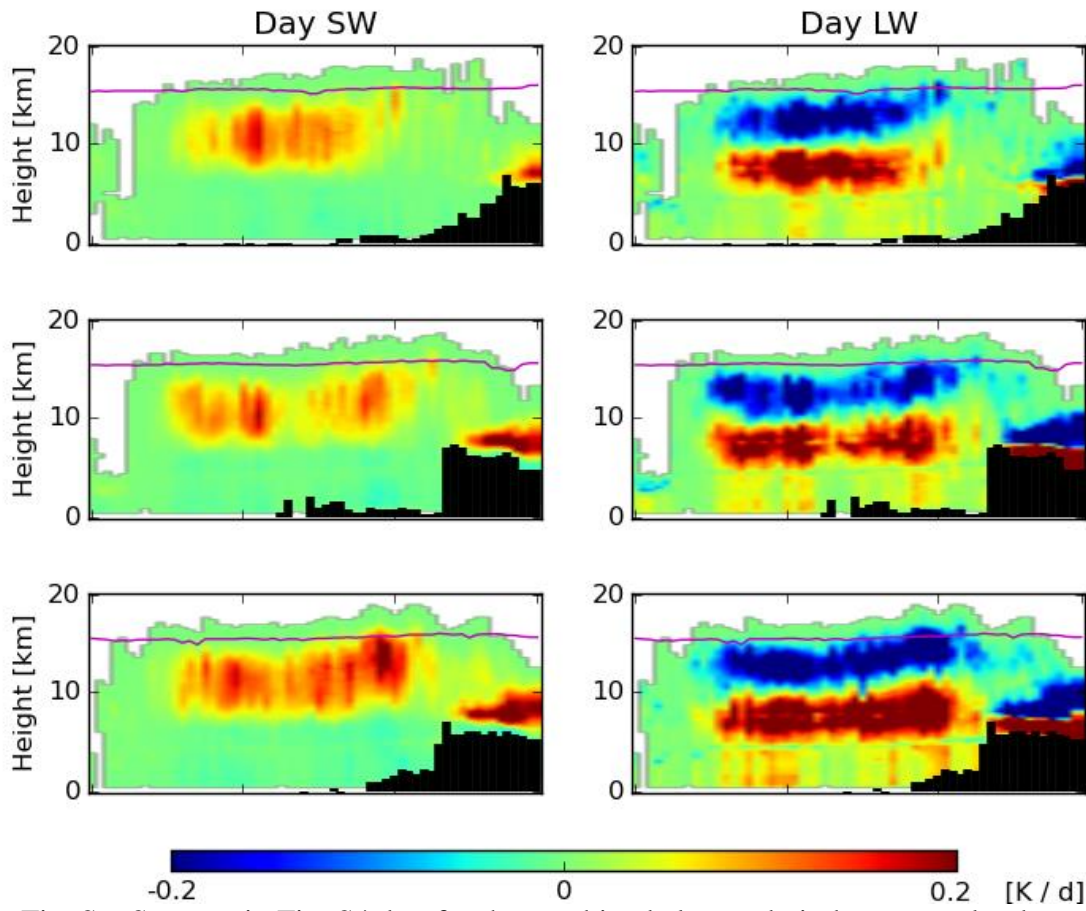


Fig. S6: Same as in Fig. S4, but for the combined alto- and nimbostratus cloud categories.

Deep Convection

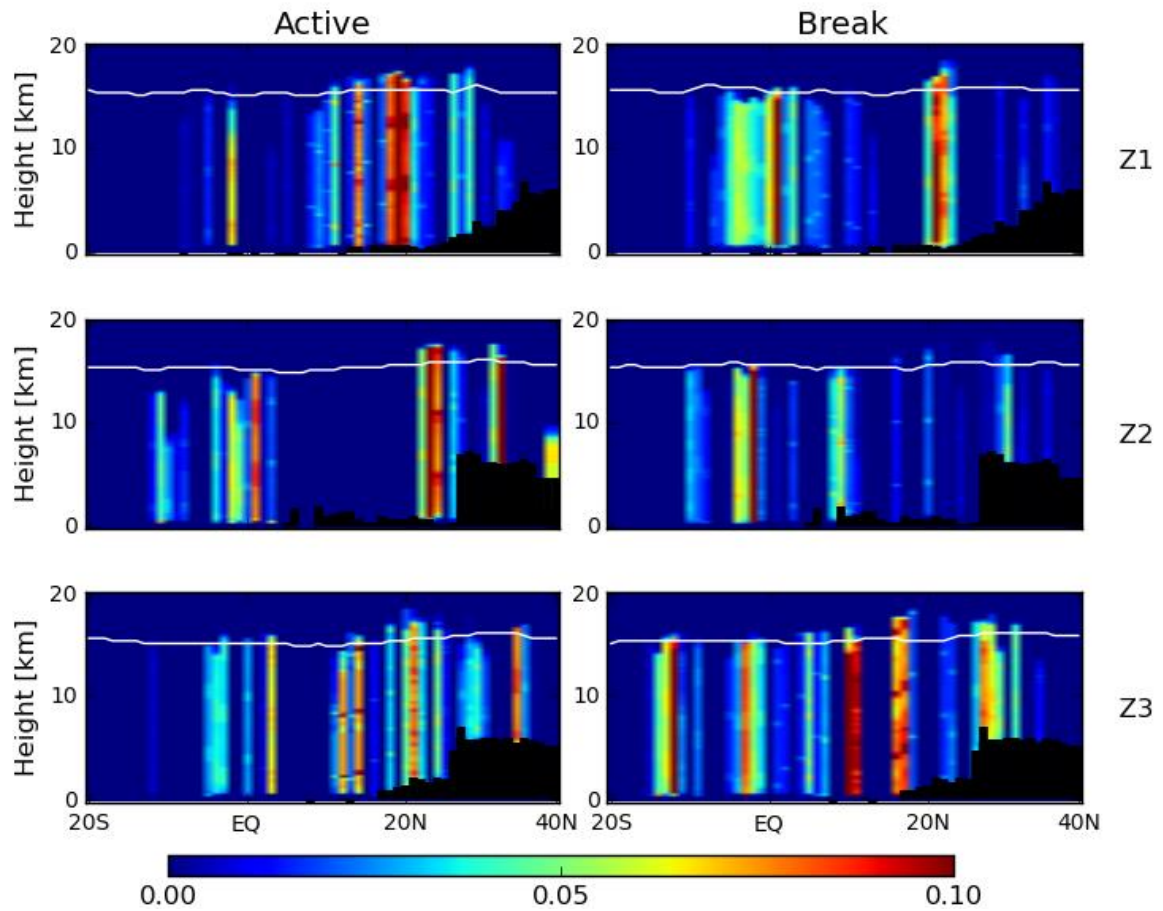


Fig. S7: Vertical cloud fraction of deep convective towers over the selected three zones during active and break periods of monsoon.

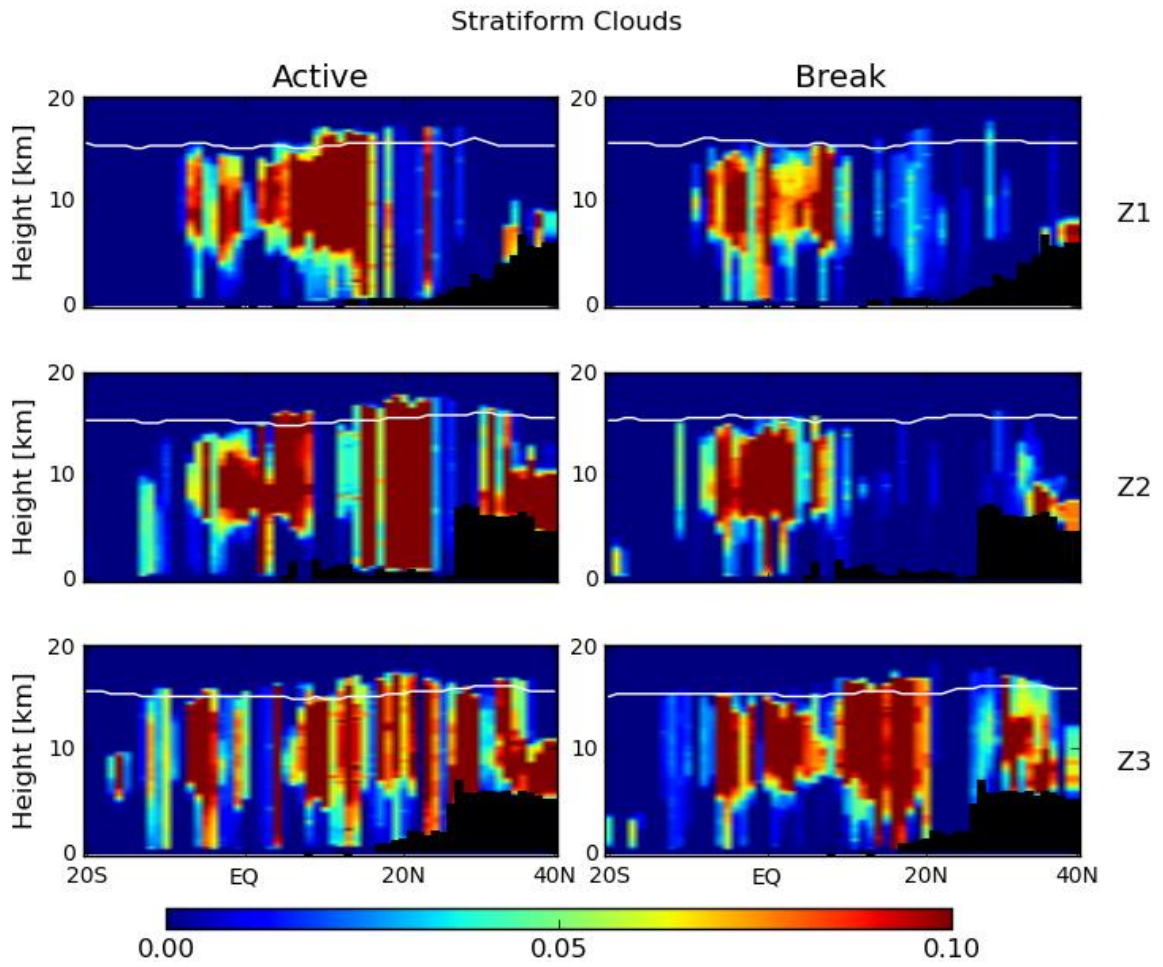


Fig. S8: Same as in Fig. S7, but for stratiform clouds.