

Supplement of Atmos. Chem. Phys., 14, 8749–8761, 2014
<http://www.atmos-chem-phys.net/14/8749/2014/>
doi:10.5194/acp-14-8749-2014-supplement
© Author(s) 2014. CC Attribution 3.0 License.



Supplement of

Investigation of the “elevated heat pump” hypothesis of the Asian monsoon using satellite observations

M. M. Wonsick et al.

Correspondence to: R. T. Pinker (pinker@atmos.umd.edu)

Supplements

List of Figures

Figure S1. Monthly mean GPCP precipitation in July for the years 2001 – 2012 over the region bounded by 5° N to 40° N and 50° E to 100° E.

Figure S2. TOMS aerosol index for May of the years used in the study by Lau et al. (2006). High absorbing aerosol years are shown in top row and low aerosol years are shown in bottom row.

Figure S3. TOMS aerosol index for May of the years used in the study by Lau et al. (2006). High absorbing aerosol years are shown in top row and low aerosol years are shown in bottom row (as available from http://gdata1.sci.gsfc.nasa.gov/daac-bin/G3/gui.cgi?instance_id=toms using the NASA Giovanni tool, provided by Goddard Earth Sciences Data and Information Services Center (GES DISC)).

Supplements

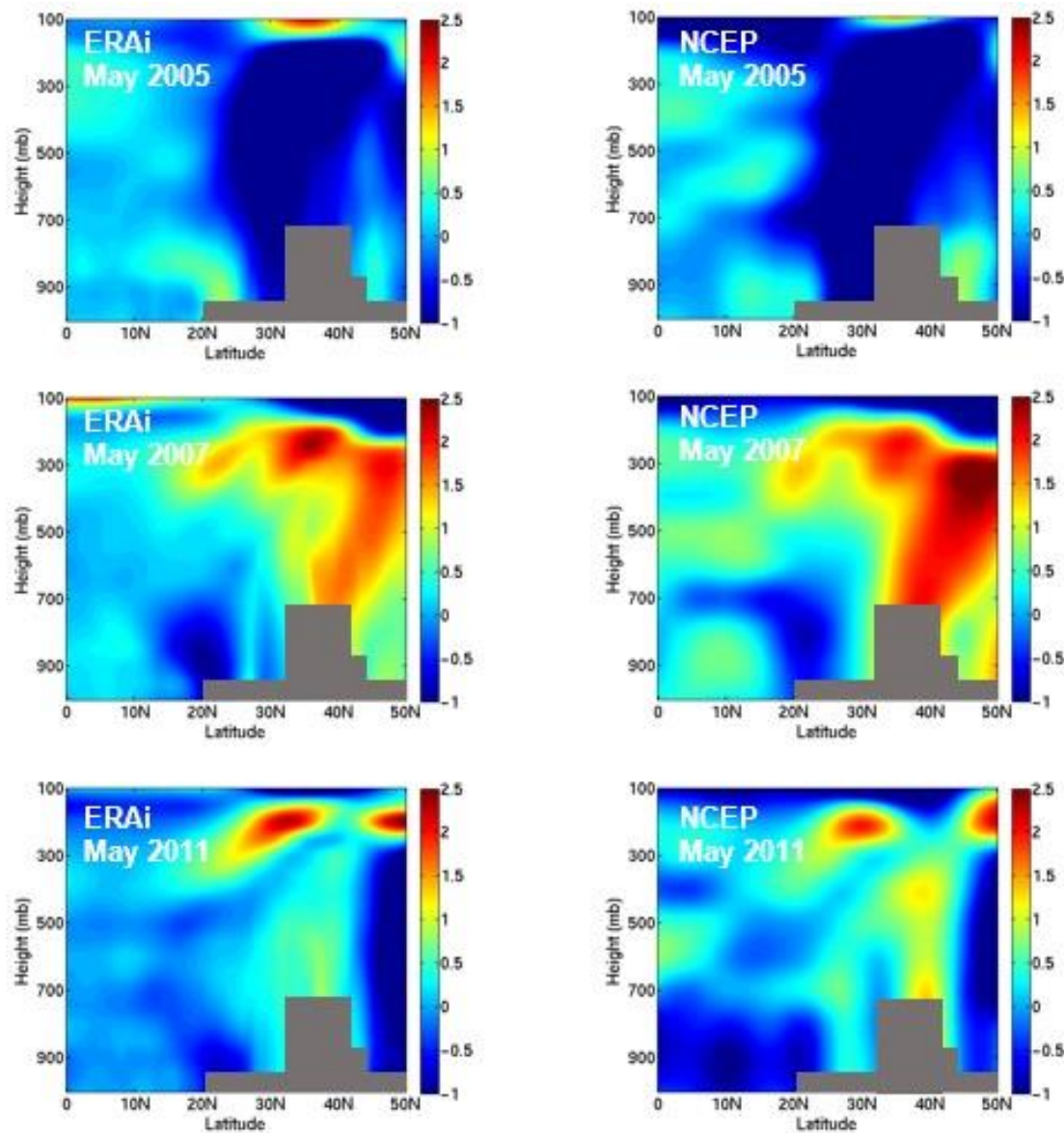


Figure S1. Latitude-height distribution of temperature anomaly ($^{\circ}\text{C}$) from ERAi and (left column) and NCEP/DOE-R2 Reanalysis (right column) over latitude sector 70°E to 100°E for May of the low aerosol years: 2005 (top), 2007 (middle), 2011 (bottom). Gray shaded area is an idealized representation

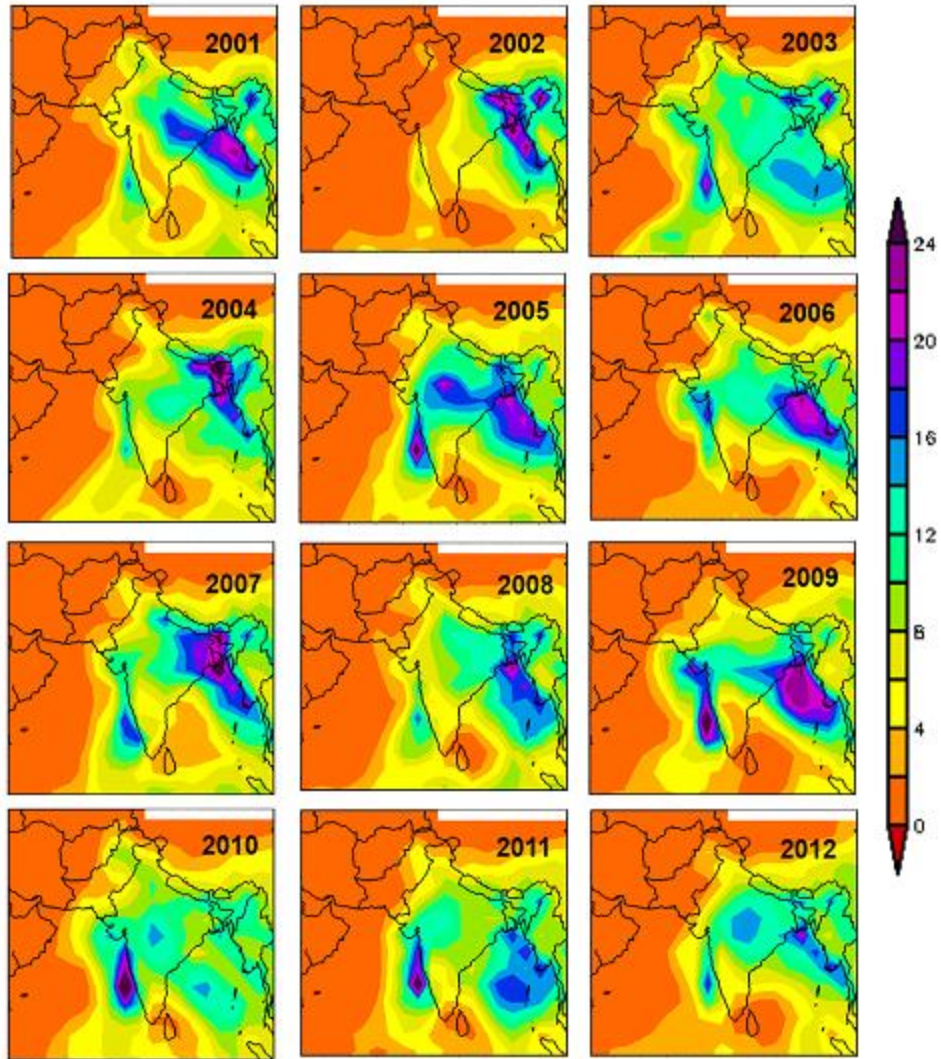


Figure S2. Monthly mean GPCP precipitation in July for the years 2001 – 2012 over the region bounded by 5° N to 40° N and 50° E to 100° E.

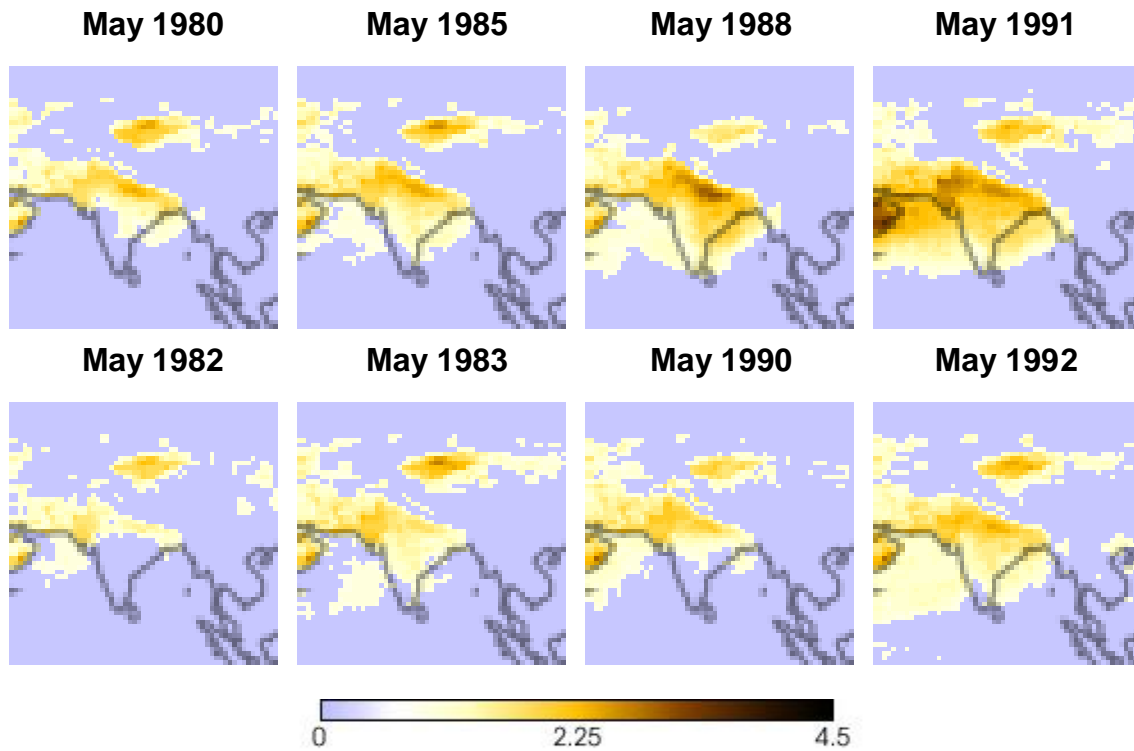


Figure S3. TOMS aerosol index for May of the years used in the study by *Lau et al.* (2006).

High absorbing aerosol years are shown in top row and low aerosol years are shown in bottom row.