



Contribution of ship
traffic to aerosol
particle
concentrations

N. Kivekäs et al.

Contribution of ship traffic to aerosol particle concentrations downwind of a major shipping lane

N. Kivekäs^{1,2}, A. Massling³, H. Grythe^{2,4,5}, R. Lange⁶, V. Rusnak¹, S. D. Carreno¹,
H. Skov^{3,7,8}, E. Swietlicki¹, Q. T. Nguyen⁶, M. Glasius⁶, and A. Kristensson¹

¹Department of Physics, Lund University, Lund, Sweden

²Atmospheric Composition Research, Finnish meteorological Institute, Helsinki, Finland

³Department of Environmental Science, Aarhus University, Roskilde, Denmark

⁴Department of Applied Environmental Science, Stockholm University, Stockholm, Sweden

⁵Norwegian Institute for Air Research, Oslo, Norway

⁶Department of Chemistry and iNANO, Aarhus University, Aarhus, Denmark

⁷Arctic Research Centre, Aarhus University, Aarhus, Denmark

⁸University of Southern Denmark, Institute of Chemical Engineering and Biotechnology and Environmental Technology, Odense, Denmark

Received: 21 December 2013 – Accepted: 3 March 2014 – Published: 31 March 2014

Correspondence to: N. Kivekäs (niku.kivekas@fmi.fi)

Published by Copernicus Publications on behalf of the European Geosciences Union.

Title Page

Abstract

Introduction

Conclusions

References

Tables

Figures



Back

Close

Full Screen / Esc

Printer-friendly Version

Interactive Discussion



Abstract

Particles in the atmosphere are of concern due to their toxic properties and effects on climate. In coastal areas ship emissions can be a significant anthropogenic source. In this study we investigated the contribution from ship emissions to the total particle number and mass concentrations at a remote location. We studied the particle number concentration (12 to 490 nm in diameter), the mass concentration (12 to 150 nm in diameter) and number and volume size distribution of aerosol particles in ship plumes for a period of four and a half months at Høvsøre, a coastal site on the western coast of Jutland in Denmark. During episodes of western winds the site is about 50 km downwind of a major shipping lane and the plumes are approximately one hour aged when they arrive at the site. We have used a sliding percentile based method for separating the plumes from the measured background values and to calculate the ship plume contribution to the total particle number and $PM_{0.15}$ mass concentration (mass of particles below 150 nm in diameter, converted from volume assuming sphericity) at the site. The method is not limited to particle number or volume concentration, but can also be used for different chemical species in both particle and gas phase. The total number of analyzed ship plumes was 726, covering on average 19 % of the time when air masses were arriving to the site over the shipping lane. During the periods when plumes were present, the particle concentration exceeded the background values on average by 790 cm^{-3} by number and $0.10 \mu\text{g m}^{-3}$ by mass. The corresponding daily average values were 170 cm^{-3} and $0.023 \mu\text{g m}^{-3}$, respectively. This means that the ship plumes contributed between 11 and 19 % to the particle number concentration, and between 9 and 18 % to $PM_{0.15}$ during days when air was arriving over the shipping lane. The estimated annual contribution from ship plumes, where all wind directions were included, was in the range of 5–8 % in particle number concentration and 4–8 % in $PM_{0.15}$.

Contribution of ship traffic to aerosol particle concentrations

N. Kivekäs et al.

Title Page

Abstract

Introduction

Conclusions

References

Tables

Figures

⏪

⏩

◀

▶

Back

Close

Full Screen / Esc

Printer-friendly Version

Interactive Discussion



3.3 Particle number size distribution during ship days

During ship days the particle number concentration was characterized by a smooth background level and sharp peaks clearly exceeding this level (Fig. 5). In the particle number size distribution data these peaks were most dominant in the Aitken mode.

During inland days no such peaks were present, but during other sea days there was sometimes some indication of more smoothed peaks. During mixed days there were clear peaks for some part of the day. Because we wanted to be sure that we were studying ship emissions, the analysis hereafter in this paper is done only to ship days, unless mentioned otherwise. We have not made a direct connection between these peaks and the ships passing by, but since these peaks resemble ship plumes reported in other studies (Tian et al., 2013; Jonsson, 2011; Fridell et al., 2008; Isakson et al., 2001) and there were no other plausible causes for the peaks, we assume that the peaks are produced by ship plumes. Later in this paper these peaks in the data are called plumes.

3.4 Defining and extracting the ship plumes from the data

There were no measurements available of the same air masses prior to their crossing of the shipping lane. Therefore we extracted the background particle number concentration and background particle number-size-distribution from the total number concentration (N) and number-size-distribution (PNSD) data that also contained the ship plumes. This was achieved by taking the 25th percentile values of a sliding window with a window width of 40 consecutive measurement points (3 h 20 min) of both N and PNSD (Fig. 5). In the following we call these data background particle number concentration (N_b) and background particle number size distribution (PNSD_b). We chose both the percentile and the window width by testing with different values. Higher percentile included plume values in N_b during periods of very frequent plumes, and a lower percentile followed the minimum points of N rather than the changes in the background

Contribution of ship traffic to aerosol particle concentrations

N. Kivekäs et al.

Title Page

Abstract

Introduction

Conclusions

References

Tables

Figures

⏪

⏩

◀

▶

Back

Close

Full Screen / Esc

Printer-friendly Version

Interactive Discussion

level. Shorter time window also included plume values in N_b in case of long or frequent plumes.

We also calculated the particle volume concentration (V) and particle volume-size-distribution (PVSD) by assuming that all particles are spherical and every particle has the geometric mean diameter of the corresponding size bin. Then we calculated the background particle volume concentration (V_b) and background particle volume-size distribution (PVSD_b) the same way as we did for the number concentrations number-size-distributions. As most of the particle volume was located in the larger particle size range where the number concentration of particles was low and the counting statistics are thus poor, there was too much noise in V_b hiding any signal from the plume. To exclude the noisy data we limited the particle volume analysis to 12–150 nm in diameter. We also analyzed the size range 12–300 nm, but in this size range the noise was already too high for reliable results. Therefore we do not report numerical results for that size range.

We defined excess particle number concentration (N_e) and excess particle number-size-distribution (PNSD_e) as the difference between the measured (total) N and PNSD, and the corresponding background values (N_b , PNSD_b) (Fig. 5). This data included the ship plumes as well as the noise in the measured data. In plotting we replaced negative particle number concentrations in the N_e with 1 cm^{-3} and in V_e with $0.001 \mu\text{m}^3 \text{ cm}^{-3}$. The actual analysis, however, is done with data where the negative values were left intact. We defined the excess number ratio (R_{N_e}) and excess volume ratio R_{V_e} by dividing the measured total particle number (or volume) concentration by the background particle number (or volume) concentration.

If there were significant and rapid changes in the background particle number concentration (N_b), those could affect our analysis later. We calculated the absolute and relative change rates of N_b and smoothed them by taking a sliding average of six consecutive measurement points (30 min). We marked any period when these smoothed values were above 56 cm^{-3} in absolute change or 5% in relative change (or below -56 cm^{-3} or -5% , respectively) as unanalyzable (Fig. 6). These values correspond to

Contribution of ship traffic to aerosol particle concentrations

N. Kivekäs et al.

[Title Page](#)[Abstract](#)[Introduction](#)[Conclusions](#)[References](#)[Tables](#)[Figures](#)[⏪](#)[⏩](#)[◀](#)[▶](#)[Back](#)[Close](#)[Full Screen / Esc](#)[Printer-friendly Version](#)[Interactive Discussion](#)

Contribution of ship traffic to aerosol particle concentrations

N. Kivekäs et al.

Title Page

Abstract

Introduction

Conclusions

References

Tables

Figures

⏪

⏩

◀

▶

Back

Close

Full Screen / Esc

Printer-friendly Version

Interactive Discussion

a change of 67 % of what is needed to define a plume (see later). We also marked periods of 10 data points before any positive unanalyzable value and 10 data points after any negative unanalyzable value as unanalyzable, because due to the use of sliding 25th percentiles the background reacted to decreasing concentrations roughly 10 measurement points too early and to increasing concentrations 10 measurement points too late. The unanalyzable periods covered 11 % of the total time during ship days, but when examined on daily basis the maximum unanalyzable period was 43 % of a day. All time periods that were not marked unanalyzable are considered analyzable. The analysis we present hereafter in this paper is done for analyzable periods only, unless mentioned otherwise.

We defined a plume as a period of data when $N_e \geq 500 \text{ cm}^{-3}$ or $R_{N_e} \geq 1.5$ (Fig. 7). These values are a compromise between including all clear plumes and excluding peaks caused by other variability in the data. If a continuous period defined by the above criteria contained several peaks in N_e or R_{N_e} , each peak was defined as a separate plume, separated by the time point with lowest N_e (or R_{N_e}) between the peaks. For each plume we calculated the starting and the ending time of the plume, the plume duration, highest N_e in the plume, highest R_{N_e} in the plume and total N_e and V_e during the plume. If a plume contained even one data point within an unanalyzable period, the entire plume was marked as unanalyzable (Fig. 7). We also calculated the average particle number and volume size distributions of PNSD_e and PVSD_e for each plume, and fitted a lognormal curve to the average PNSD_e of each plume. We converted the volume concentrations to mass concentrations (PM_{0.15}) assuming that all particles had a density of 1.5 g cm^{-3} .

Finally we calculated the total number of ship plumes per day, as well as daily average and sum values of the above parameters. The total daily number and volume concentrations of particles were extrapolated to cover also the unanalyzable periods.

3.5 Calculating the ship plume contributions

We calculated the daily contribution of the ship plumes to total number N and total volume V with two different methods. The first method for calculating the contribution of ship plumes ($\text{Ship}N(\%)_{\text{low}}$) to daily particle number was done by dividing the sum of N_e values during all analyzable plumes (periods fulfilling the plume criteria) of that day with the sum of N values during all analyzable time periods of the same day according to Eq. (1):

$$\text{Ship}N(\%)_{\text{low}}(\text{ship day}) = \frac{\sum_{\text{analyzable plumes}} \sum_{\text{plume start}}^{\text{plume end}} N_e}{\sum_{\text{analyzable time}} N} \quad (1)$$

The same procedure was done for the volume concentrations to receive $\text{Ship}V(\%)_{\text{low}}(\text{ship day})$. This method underestimates the plume contribution (and is therefore called $\text{Ship}N(\%)_{\text{low}}$ and $\text{Ship}V(\%)_{\text{low}}$) because it does not take into account those plumes where both N_e and R_{N_e} are below the plume definition limits we use or those parts of any plume that are below both of these limits. It also excludes in the nominator the analyzable part of any plume that has unanalyzable data, but includes that time period in the denominator.

The second method is given in Eq. (2):

$$\text{Ship}N(\%)_{\text{high}}(\text{ship day}) = \frac{\sum_{\text{analyzable time}} N_e}{\sum_{\text{analyzable time}} N} \quad (2)$$

This method overestimates the plume contribution by including in the numerator not only all plumes, but also all noise in N_e and artificial peaks in N_e resulting from changes in N_b (those that are not high enough to be marked as unanalyzable). The same procedure was done for the volume concentrations to receive $\text{Ship}V(\%)_{\text{high}}(\text{ship day})$.

In order to estimate the average daily contribution of the ship plumes during ship days we calculated averages of the daily contributions for both methods separately,

which gave us a range from the underestimating method value to the overestimating method value. We also calculated the lower estimate of ship plume contribution on N for a mixed day by:

$$\text{Ship}N(\%)_{\text{low}}(\text{mixed day}) = \text{Ship}N(\%)_{\text{low}}(\text{ship day}) \frac{n(\text{ship day})}{n(\text{ship day}) + n(\text{sea day}) + n(\text{inland day})} \quad (3)$$

where n denotes the number of each type of day during the entire year 2012. Then we performed the same calculation for $\text{Ship}N(\%)_{\text{high}}(\text{mixed day})$ based on $\text{Ship}N(\%)_{\text{high}}(\text{ship day})$, and the corresponding volume contributions using $\text{Ship}V(\%)_{\text{low}}(\text{ship day})$ and $\text{Ship}V(\%)_{\text{high}}(\text{ship day})$. Finally we used these contributions to estimate the average contributions of ship plumes to N and V for the entire year 2012 based on the ship plume contributions for different types of days and the fraction of the different days during year 2012. In this analysis we assumed that there is no ship plume contribution during sea days or inland days and that a missing data day gives the same contribution as a mixed day.

$$\text{Ship}N(\%)_{\text{low}}(2012) = \frac{n(\text{ship day}) \cdot \text{Ship}N(\%)_{\text{low}}(\text{ship day}) + (n(\text{sea day}) + n(\text{inland day})) \cdot 0}{n(\text{ship day}) + n(\text{sea day}) + n(\text{inland day}) + n(\text{mixed day}) + n(\text{missing data day})} + \frac{(n(\text{mixed day}) + n(\text{missing data day})) \cdot \text{Ship}N(\%)_{\text{low}}(\text{mixed day})}{n(\text{ship day}) + n(\text{sea day}) + n(\text{inland day}) + n(\text{mixed day}) + n(\text{missing data day})} \quad (4)$$

We calculated the overestimation values for the entire year 2012 the same way from the $\text{Ship}N(\%)_{\text{high}}$ values, and the volume contributions from $\text{Ship}V(\%)_{\text{low}}$ and $\text{Ship}V(\%)_{\text{high}}$ values.

Contribution of ship traffic to aerosol particle concentrations

N. Kivekäs et al.

Title Page

Abstract

Introduction

Conclusions

References

Tables

Figures

⏪

⏩

◀

▶

Back

Close

Full Screen / Esc

Printer-friendly Version

Interactive Discussion



4 Results

4.1 Number of ships

The daily number of ships passing the Høvsøre site was on average 82 ships per day, and varied from 64 to 97 ships per day (10 and 90 percentiles) during our measurement period. On average 40 (32 to 48) out of them were ships registered with size larger than 10 kt in gross weight. We can assume that these large ships produce the strongest plumes, having highest probability for detection. Therefore we can expect the daily number of detectable plumes to be around those numbers. If an individual ship passed the site twice the same day, it was counted only once, which can lead to a slight underestimation of these numbers. This underestimation is assumed to affect mostly the number of smaller vessels that operate around the area rather than pass by on the shipping lane. A significant amount of activity of smaller ships took place at the nearby small harbors of Thyborøn and Thorsminde 28 km north and 8 km south of the Høvsøre measurement site, respectively. We do not expect any contribution from ships at those areas in our measurements, since a trajectory arriving over the locations of the harbors would most likely not be classified as having arrived from the shipping lane (see Sect. 3.1), and therefore the day would not be classified as a ship day and thus analyzed. All activities of ships larger than 10 kt in gross weight were on the open sea, mostly at the shipping lane.

4.2 Characteristics of the ship plumes

There were altogether 726 analyzable ship plumes detected during ship days in our measurement data. 355 (49 %) of those were separate plumes with N_e exceeding 500 cm^{-3} and 156 (21 %) were separate plumes with $N_e < 500 \text{ cm}^{-3}$ but $R_{N_e} > 1.5$. The remaining 215 (30 %) plume peaks were peaks not separated by non-plume periods.

Contribution of ship traffic to aerosol particle concentrations

N. Kivekäs et al.

Title Page

Abstract

Introduction

Conclusions

References

Tables

Figures

⏪

⏩

◀

▶

Back

Close

Full Screen / Esc

Printer-friendly Version

Interactive Discussion



The average duration of a plume was 12 min. (Table 2). The duration varied from 5 to 25 min (10 % and 90 % values). It is worth noticing that 36 % of the plumes had the minimum duration of one measurement cycle lasting 5 min.

Table 2 summarizes the plume characteristics with average values as well as 10 and 90 percentiles. We calculated the peak height of the number concentration of excess particles (N_e peak). The start and end times of the plumes allowed us to calculate the average N_e during each individual plume (N_e plume average). We also calculated the sum of N_e for the entire day, and then divided it over the analyzable periods of the day (N_e day average).

We also report the corresponding values for V_e , converted into $PM_{0.15}$ (Table 2). These values are very low when compared to typically reported PM_1 and $PM_{2.5}$ contributions from shipping using source/receptor modeling (Pandolfi et al., 2011, and references therein). However, one should keep in mind that our values are only for very small particles $PM_{0.15}$ whereas most of PM_1 or $PM_{2.5}$ mass is contributed by the larger particles. In some plumes we observed another particle mode with a diameter around 200 nm. This mode did not contribute much to N_e , while the volume concentration of particles in this mode (even though often significant) was usually masked by the high noise in the calculated total volume concentration (V).

The average particle number size distribution of excess particles ($PNSD_e$) during plumes peaked at 41 nm, whereas $PVSD_e$ peaked at 76 nm (Fig. 8). Some of the individual $PVSD_e$ had highest values at 150 nm. This can be caused by the 200 nm mode or by the noise, as described above. The average fitted number concentration N , geometric standard deviation σ and mode peak diameter D_p (with 10 % and 90 % values) of N_e are also presented in Table 2.

The number of valid ship plumes per day was on average 19 and varied from 5 to 32 plumes (10 and 90 percentiles) per day (Table 3). We also extrapolated these values to cover the unanalyzable periods and calculated the total duration of all analyzable plumes during the day as well as their fraction of the total analyzable time of the day.

Contribution of ship traffic to aerosol particle concentrations

N. Kivekäs et al.

Title Page

Abstract

Introduction

Conclusions

References

Tables

Figures

⏪

⏩

◀

▶

Back

Close

Full Screen / Esc

Printer-friendly Version

Interactive Discussion

4.3 Contribution of the ship plumes to particle number and volume

We calculated the average daily ship plume contributions to N_e and V_e at Høvsøre (Table 4) as described in the methods section. The lower limits of the ranges are mean values calculated with the underestimating method ($\text{Ship}N(\%)_{\text{low}}$ and $\text{Ship}V(\%)_{\text{low}}$), and the higher limits are mean values calculated with the overestimating method ($\text{Ship}N(\%)_{\text{high}}$ and $\text{Ship}V(\%)_{\text{high}}$). The estimates for the entire year are based on the average daily contributions and the fraction of different days during the year.

5 Discussion

The use of sliding percentile as a filter for extracting peak values from background is statistically not a new idea (e.g. Torrence and Compo, 1998), but we are not aware of it being used for extracting ship plumes from background data before this paper. Similar methods are used in other applications but for data where the peaks have already been removed (e.g. European commission, 2011; Escudero et al., 2007) The use of sliding median or percentile (instead of sliding average) means that peak values do not directly affect the background level. There are, however, some biases produced by the method. In our case the use of a percentile lower than 50 % means that even during periods when there are no peaks within the sliding window (40 consecutive data points) more than half of the noise is included in N_e and less than half in N_b , and therefore the extracted N_b is somewhat lower than the average of the window. Peaks within the sliding window increase N_b (and decrease N_e) slightly by replacing some of the low values within the window with high ones, therefore increasing the 25 % value. If the noise in N is much smaller than the peak values, neither one these biases has a significantly effect on the analysis. When we use 25 percentile, actual peak values are included in N_b only if the peak periods cover more than 75 % of the given time window.

Contribution of ship traffic to aerosol particle concentrations

N. Kivekäs et al.

Title Page

Abstract

Introduction

Conclusions

References

Tables

Figures

⏪

⏩

◀

▶

Back

Close

Full Screen / Esc

Printer-friendly Version

Interactive Discussion

We investigated the contribution of ship plumes to particle number and volume concentrations at Høvsøre on the western coast of Denmark, roughly one hour downwind of a major shipping lane. We found the ship plumes to contribute daily on average between 11 % and 19 % to the total number concentration and between 9 % and 18 % to $PM_{0.15}$ during days when the wind was blowing from the shipping lane. When this was extrapolated to the entire year 2012 taking into account the fraction of different types of days the corresponding numbers were between 5 % and 8 % for total particle number concentration and between 4 % and 8 % for $PM_{0.15}$. This extrapolation does not take into account any systematic seasonal differences in background particle number concentration, background particle number-size-distribution or in shipping intensity, and is therefore to be used only as a rough estimate.

Even though we have reported an upper and lower limit for our estimates, the whole range could be somewhat too low. We have included plumes only from the nearby shipping lane, whereas plumes from ships further away are more diluted and contribute as an increase in the background particle number and volume concentrations, therefore decreasing the calculated contributions in our approach instead of increasing them. The same applies to the most diluted plumes from the nearby shipping lane. In general, the method tends to underestimate the number of individual plumes, while aged, non-detected plumes can increase the background concentrations. Furthermore, we have assumed the sea days (air coming from sea, but not perpendicularly over the nearby shipping lane) to have a ship plume contribution of zero. There are cases when, during a sea day, air parcels pass along the shipping lane for some time of the day, and these also transport ship-emitted particles to our measurement site.

The mass contribution of $PM_{0.15}$ we obtain in this study is only 1 % to 10 % of the $PM_{2.5}$ contribution reported at other shore or port areas (Pandolfi et al., 2011, and references therein) at similar or shorter distances to the ships. Despite the fact that most of the particles are found in the sub-150 nm diameter size range, the $PM_{2.5}$ contribution is often dominated by a few, but rather large particles. Also the lower emission limits at

the background level and as discussed above for ship emissions further away therefore decrease both estimates of the plume contribution.

Another reason is the different distances between the ships and our measurement site. If a ship passes further away the plume has more time to dilute and disperse, and thus could not be recognized as a plume by our method, but it would be included in the upper estimates of the ship contribution. If a plume is extremely dispersed, it can even contribute to background values.

The third reason lies in the uncertainties created by the meteorological conditions, especially the boundary layer height. A higher well-mixed boundary layer allows more vertical mixing of the plume leading to lower particle number and volume concentrations at our measurement site. Also enhanced deposition (e.g. rain) can lower the particle number concentration significantly. These factors affect not only the plume, but also the background concentrations, and therefore many (but not all) of these plumes are included in the analysis as plumes with $N_e < 500 \text{ cm}^{-3}$ but $R_{N_e} \geq 1.5$.

6 General conclusions

In general we can claim that this method works in areas where ship traffic is emitting particles to an otherwise homogenous particle population. The less variation there is in the background number and volume concentrations the better the developed method works. Also fewer ships would make it easier to separate the individual plumes, as one can use sliding median instead of sliding 25 percentile as a background filter. This would decrease the duration of unanalyzable periods. Suitable places for applying this analysis can be found (as example) in the Arctic and at oceanic coasts where the prevailing winds are marine. In places where the orography is complex, the boundary layer may create local effects that disturb the air flow, and therefore we do not recommend using this technique at mountainous shores without further examination.

In the near future it is important to parameterize the effects of meteorology to the observed plumes in order to make the different days of observation more comparable.

Contribution of ship traffic to aerosol particle concentrations

N. Kivekäs et al.

Title Page

Abstract

Introduction

Conclusions

References

Tables

Figures

⏪

⏩

◀

▶

Back

Close

Full Screen / Esc

Printer-friendly Version

Interactive Discussion



Contribution of ship traffic to aerosol particle concentrations

N. Kivekäs et al.

Title Page

Abstract

Introduction

Conclusions

References

Tables

Figures

⏪

⏩

◀

▶

Back

Close

Full Screen / Esc

Printer-friendly Version

Interactive Discussion

If the plumes arrive at the measurement site in less than 45 min, independent high time resolution measurements of CO₂, NO_x and SO₂ could validate the occurrence of the plumes better (Petzold et al., 2008). Higher time resolution particle number concentration measurements could contribute with valuable additional information. Finally measurements of particle mass or mass-size-distribution with high enough time resolution would allow much better analysis of the ship contribution to PM₁ or PM_{2.5}. Combining trajectory and ship AIS information will make it possible to connect the plumes to individual ships, and therefore to evaluate in detail how individual ships contribute to the particle population.

Acknowledgements. This work was supported by NordForsk through the top-level initiative Cryosphere-atmosphere interactions in changing Arctic climate (CRAICC) and the Swedish research council FORMAS (grant no. 2010-850). The study is a contribution to the Lund University Strategic Research Areas: Modeling the Regional and Global Earth System (MERGE). The Nordea Foundation is acknowledged for financial support of the measurement container.

References

- Berntsen, T., Fuglestedt, J., Myhre, G., Stordal, F., and Berglen, T.: Abatement of greenhouse gases: does location matter?, *Climatic Change*, 74, 377–411, doi:10.1007/s10584-006-0433-4, 2006.
- Bjeltvedt Skeie, R., Fuglestedt, J., Berntsen, T., Tronstad Lund, M., Myhre, G., and Rypdahl, K.: Global temperature change from the transport sectors: historical development and future scenarios, *Atmos. Environ.*, 43, 6260–6270, 2009.
- Corbett, J. J., Winebrake, J. J., Green, E. H., Kasibhatla, P., Eyring, V., and Lauer, A.: Mortality from ship emission: a global assessment, *Environ. Sci. Technol.*, 41, 8512–8518, 2007.
- Corbett, J. J., Lack, D. A., Winebrake, J. J., Harder, S., Silberman, J. A., and Gold, M.: Arctic shipping emissions inventories and future scenarios, *Atmos. Chem. Phys.*, 10, 9689–9704, doi:10.5194/acp-10-9689-2010, 2010.
- Draxler, R. R. and Hess, G. D.: An overview of the HYSPLIT_4 modeling system of trajectories, dispersion, and deposition, *Aust. Meteorol. Mag.*, 47, 295–308, 1998.

Contribution of ship traffic to aerosol particle concentrations

N. Kivekäs et al.

Title Page

Abstract

Introduction

Conclusions

References

Tables

Figures

⏪

⏩

◀

▶

Back

Close

Full Screen / Esc

Printer-friendly Version

Interactive Discussion

- Escudero, M., Querol, X., Pey, J., Alastuey, A., Pérez, N., Ferreira, F., Alonso, S., Rodríguez S., and Cuevas, E.: A methodology for the quantification of the net African dust load in air quality monitoring networks, guidance to member states on PM₁₀ monitoring and intercomparisons with the reference methods, *Atmos. Environ.*, 41, 5516–5524, 2007.
- 5 European Commission: Commission Staff Working Paper: establishing guidelines for demonstration and subtraction of exceedances attributable to natural sources under Directive 2008/50/EC on ambient air quality and cleaner air for Europe, SEC(2011) 208 final, available at http://ec.europa.eu/environment/air/quality/legislation/pdf/sec_2011_0208.pdf (last access: 18 March 2014), 2011
- 10 Fridell, E., Steen, E., and Peterson, K.: Primary particles in ship emissions, *Atmos. Environ.*, 42, 1160–1168, 2008.
- Fuglestedt, J., Berntsen, T., Eyring, V., Isaksen, I., Lee, D. S., and Sausen, R.: Shipping emissions: from cooling to warming of climate – and reducing impacts on health, *Environ. Sci. Technol.*, 43, 5592–5598, 2009.
- 15 Garrett, T. J. and Zhao, C.: Increased Arctic cloud longwave emissivity associated with pollution from mid-latitudes, *Nature*, 440, 787–789, doi:10.1038/nature04636, 2006.
- Hansen J. and Nazarenko, L.: Soot climate forcing via snow and ice albedos, *P. Natl. Acad. Sci. USA*, 101, 423–428, 2004.
- IMO (International Maritime Organization): Amendments to the Annex of the Protocol of 1997 to Amend the International Convention for the Prevention of Pollution from Ships, 1973, as Modified by the Protocol of 1978 Relating Thereto, available at: <http://www.imo.org/OurWork/Environment/PollutionPrevention/AirPollution/Documents/Air> pollution/Resolution MEPC.176(58) Revised MARPOL Annex VI.pdf (last access: 6 March 2014), 2008.
- 20 Isakson, J., Persson, T. A., and Selin Lindgren, E.: Identification and assessment of ship emissions and their effects in the harbor of Göteborg, Sweden, *Atmos. Environ.*, 35, 3659–3666, 2001.
- Jonsson, Å. M., Westerlund, J., and Hallquist, M.: Size-resolved particle emission factors for individual ships, *Geophys. Res. Lett.*, 38, L13809, doi:10.1029/2011GL047672, 2011.
- 30 Kasper, A., Aufdenblatten, S., Forss, A., Mohr, M., and Burtscher, H.: Particulate emissions from a low-speed marine diesel engine, *Aerosol Sci. Tech.*, 41, 24–32, 2007.
- Lack, D. A., Corbett, J. J., Onasch, T., Lerner, B., Massoli, P., Quinn, P. K., Bates, T., Covert, D. S., Coffman, D., Sierau, B., Herndon, S., Allan, J., Baynard, T., Lovejoy, E., Ravishankara,

Contribution of ship traffic to aerosol particle concentrations

N. Kivekäs et al.

Title Page

Abstract

Introduction

Conclusions

References

Tables

Figures

◀

▶

◀

▶

Back

Close

Full Screen / Esc

Printer-friendly Version

Interactive Discussion

- A. R., and Williams, E.: Particulate emissions from commercial shipping: chemical, physical, and optical properties, *J. Geophys. Res.*, 114, D00F04, doi:10.1029/2008JD011300, 2009.
- Lauer, A., Eyring, V., Corbett, J. J., Wang, C., and Winebrake, J. J.: Assessment of near-future policy instruments for oceangoing shipping: impact on atmospheric aerosol burdens and the Earth's radiation budget, *Environ. Sci. Technol.*, 43, 5592–5598, 2009.
- Lieke, K. I., Rosenørn, T., Pedersen, J., Larsson, D., Kling, J., Fuglsang, K., and Bilde, M.: Micro- and nanostructural characteristics of particles before and after an exhaust gas recirculation system scrubber, *Aerosol Sci. Tech.*, 47, 1038–1046, doi:10.1080/02786826.2013.813012, 2013.
- Mauritsen, T., Sedlar, J., Tjernström, M., Leck, C., Martin, M., Shupe, M., Sjogren, S., Sierau, B., Persson, P. O. G., Brooks, I. M., and Swietlicki, E.: An Arctic CCN-limited cloud-aerosol regime, *Atmos. Chem. Phys.*, 11, 165–173, doi:10.5194/acp-11-165-2011, 2011.
- Moldanova, J., Fridell, E., Popovicheva, O., Demirdjian, B., Tishkova, V., Faccinnetto, A., and Focsa, C.: Characterization of particulate matter and gaseous emissions from a large ship diesel engine, *Atmos. Environ.*, 43, 2632–2641, 2009.
- Olesen, H. R., Winther, M., Ellermann, T., Christensen, S., and Plejdrup, M.: Ship emissions and air pollution in Denmark – present situation and future scenarios, National Environmental Research Institute, Aarhus University, Aarhus, Denmark, Environmental Project No. 1307, 134 pp., 2009.
- Pandolfi, M., Gonzales-Castanedo, Y., Alastey, A., de la Rosa, J. D., Mantilla, E., de la Campa, S. S., Querol, X., Pey, J., Amato, F., and Moreno, T.: Source apportionment of PM₁₀ and PM_{2.5} at multiple sites in the strait of Gibraltar by PMF: impact of shipping emissions, *Environ. Sci. Pollut. R.*, 8, 260–269, doi:10.1007/s11356-010-0373-4, 2011.
- Partanen, A. I., Laakso, A., Schmidt, A., Kokkola, H., Kuokkanen, T., Pietikäinen, J.-P., Kermiinen, V.-M., Lehtinen, K. E. J., Laakso, L., and Korhonen, H.: Climate and air quality trade-offs in altering ship fuel sulfur content, *Atmos. Chem. Phys.*, 13, 12059–12071, doi:10.5194/acp-13-12059-2013, 2013.
- Petzold, A., Hasselbach, J., Lauer, P., Baumann, R., Franke, K., Gurk, C., Schlager, H., and Weingartner, E.: Experimental studies on particle emissions from cruising ship, their characteristic properties, transformation and atmospheric lifetime in the marine boundary layer, *Atmos. Chem. Phys.*, 8, 2387–2403, doi:10.5194/acp-8-2387-2008, 2008.

Contribution of ship traffic to aerosol particle concentrations

N. Kivekäs et al.

Title Page

Abstract

Introduction

Conclusions

References

Tables

Figures

⏪

⏩

◀

▶

Back

Close

Full Screen / Esc

Printer-friendly Version

Interactive Discussion

- Pierce, J. R., Theodoritsi, G., Adams, P. J., and Spandis, S. N.: Parameterization of the effect of sub-grid scale aerosol dynamics on aerosol number emission rates, *J. Aerosol Sci.*, 40, 385–393, 2009.
- Popovicheva, O., Kireeva, E., Persiantseva, N., Timofeev, M., Bladt, H., Ivleva, N. P., Niessner, R., and Moldanova, J.: Microscopic characterization of individual particles from multi-component ship exhaust, *J. Environ. Monitor.*, 14, 3101, doi:10.1039/c2em30338h, 2012.
- Quinn, P. K., Stohl, A., Arneth, A., Berntsen, T., Burkhardt, J. F., Christensen, J., Flanner, M., Kupiainen, K., Lihavainen, M., Shepherd, M., Shevchenko, V., Skov, H., and Vestreng, V.: AMAP 2011, the Impact of Black Carbon on Arctic Climate, Arctic Monitoring and Assessment Programme (AMAP), Oslo, 72 pp., 2011.
- Smith, L. and Stephenson, S.: New Trans-Arctic shipping routes navigable by midcentury, *P. Natl. Acad. Sci. USA*, 110, E1191–E1195, doi:10.1073/pnas.1214212110, 2013.
- Stohl, A.: Computation, accuracy, and applications of trajectories – a review and bibliography, *Atmos. Environ.*, 32, 947–966, 1998.
- Tian, J., Riemer, N., Pfaffenberger, L., Schlager, H., and Petzold, A.: Modeling the evolution of aerosol particles in a ship plume using PartMC-MOSAIC, *Atmos. Chem. Phys. Discuss.*, 13, 16733–16774, doi:10.5194/acpd-13-16733-2013, 2013.
- Torrence, C. and Compo, G. P.: A practical guide to wavelet analysis, *B. Am. Meteorol. Soc.*, 79, 61–78, 1998.
- Winther, M., Christensen, J. H., Plejdrup, M. S., Ravn, E. S., Eriksson, Ó. F., and Kristensen, H. O.: Emission inventories for ships in the Arctic based on AIS data, *Atmos. Environ.*, in press, doi:10.1016/j.atmosenv.2014.03.006, 2014.
- Zhang, K. M., Wexler, A. S., Zhu, Y. F., Hinds, W. C., and Sioutas, C.: Evolution of particle number distribution near roadways. Part II: The “Road-To-Ambient” process, *Atmos. Environ.*, 38, 6655–6665, 2004.
- Ødemark, K., Dalsøren, S. B., Samset, B. H., Berntsen, T. K., Fuglestad, J. S., and Myhre, G.: Short-lived climate forcers from current shipping and petroleum activities in the Arctic, *Atmos. Chem. Phys.*, 12, 1979–1993, doi:10.5194/acp-12-1979-2012, 2012.

Contribution of ship traffic to aerosol particle concentrations

N. Kivekäs et al.

Table 1. Number and fraction of different types of day during our measurement period and during the entire year 2012.

Type of day	Number of days (measurement period)	Fraction of days (%, measurement period)	Fraction of days (%, entire year 2012)
Ship day	39	28.5	18.3
Sea day	17	12.4	10.9
Inland day	16	11.7	14.2
Mixed day	63	46.0	54.4
Missing data day	2	1.5	1.9
Total	137	100	99.9

Title Page

Abstract

Introduction

Conclusions

References

Tables

Figures

⏪

⏩

◀

▶

Back

Close

Full Screen / Esc

Printer-friendly Version

Interactive Discussion

Contribution of ship traffic to aerosol particle concentrations

N. Kivekäs et al.

Title Page

Abstract

Introduction

Conclusions

References

Tables

Figures

⏪

⏩

◀

▶

Back

Close

Full Screen / Esc

Printer-friendly Version

Interactive Discussion

Table 2. Characteristic values of the plumes. Calculation of N_e peak, plume average and day average. The average fitted number concentration N , geometric standard deviation σ and mode peak diameter D_p (with 10 % and 90 % values) of N_e .

Parameter	Unit	10 % value	Average value	90 % value
Plume duration	min	5	12	25
N_e peak	cm^{-3}	170	970	2200
N_e plume average	cm^{-3}	140	790	1700
N_e day average	cm^{-3}	16	170	420
$\text{PM}_{0.15}$ plume average	$\mu\text{g m}^{-3}$	0.014	0.10	0.24
$\text{PM}_{0.15}$ day average	$\mu\text{g m}^{-3}$	0.0017	0.023	0.057
Fitted N plume average	cm^{-3}	190	830	1900
Fitted σ plume average	–	1.34	1.52	1.88
Fitted D_p plume average	nm	20	39	52

Contribution of ship traffic to aerosol particle concentrations

N. Kivekäs et al.

Title Page

Abstract

Introduction

Conclusions

References

Tables

Figures

⏪

⏩

◀

▶

Back

Close

Full Screen / Esc

Printer-friendly Version

Interactive Discussion

Table 3. Daily values of the plume parameters. Some of the values are extrapolated to also cover the unanalyzable time periods of the day.

Parameter	Unit	10% value	Average value	90% value
Analyzable time	% of day	75	89	100
Plumes	–	6	24	37
Analyzable plumes	–	5	19	32
Analyzable plumes, extrapolated	–	5	21	35
Plume time	min	74	210	430
Plume time, extrapolated	min	74	270	520
Plume time, extrapolated	% of day	5	19	30

Contribution of ship traffic to aerosol particle concentrations

N. Kivekäs et al.

Table 4. Ship plume contribution to number and volume of particles at Høvsøre during a ship day, a mixed or missing data day and for the entire year 2012.

	Ship plume contribution during average ship day (%)	Ship plume contribution during average mixed or missing data day (%)	Ship plume contribution during entire year 2012 (%)
Number	11–19	5–8	5–8
PM _{0.15}	9–18	4–8	4–8

Title Page

Abstract

Introduction

Conclusions

References

Tables

Figures

⏪

⏩

◀

▶

Back

Close

Full Screen / Esc

Printer-friendly Version

Interactive Discussion

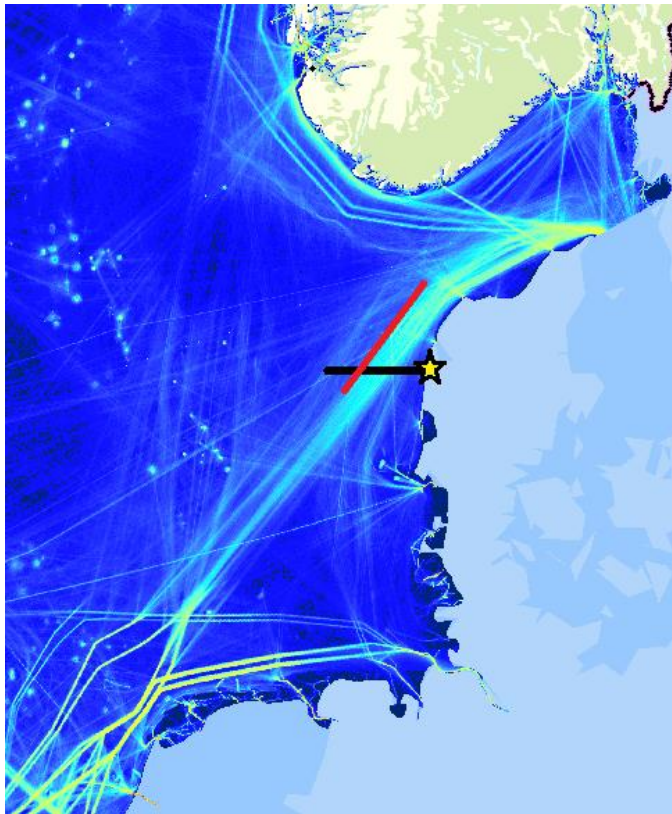


Fig. 1. Map of total ship traffic in western North Sea during the entire year 2012, based on the ship AIS data. The yellow-black star is the location of the Høvsøre measurement site. We used the red line for defining Ship days based on the air mass trajectories (Sect. 2.1) and the black line for calculating the number of ships that pass the site (Sect. 2.2).

Contribution of ship traffic to aerosol particle concentrations

N. Kivekäs et al.

Title Page

Abstract

Introduction

Conclusions

References

Tables

Figures

◀

▶

◀

▶

Back

Close

Full Screen / Esc

Printer-friendly Version

Interactive Discussion





Fig. 2. A close-up of the Høvsøre field site (yellow cross) with surrounding wind power turbines (white crosses). The sparsely trafficked local road (in north-south direction) is in the middle of the picture and the coastal road (Torsmindevej) is next to the coast line near the left edge of the picture.

Contribution of ship traffic to aerosol particle concentrations

N. Kivekäs et al.

Title Page

Abstract Introduction

Conclusions References

Tables Figures

⏪ ⏩

◀ ▶

Back Close

Full Screen / Esc

Printer-friendly Version

Interactive Discussion



Contribution of ship traffic to aerosol particle concentrations

N. Kivekäs et al.

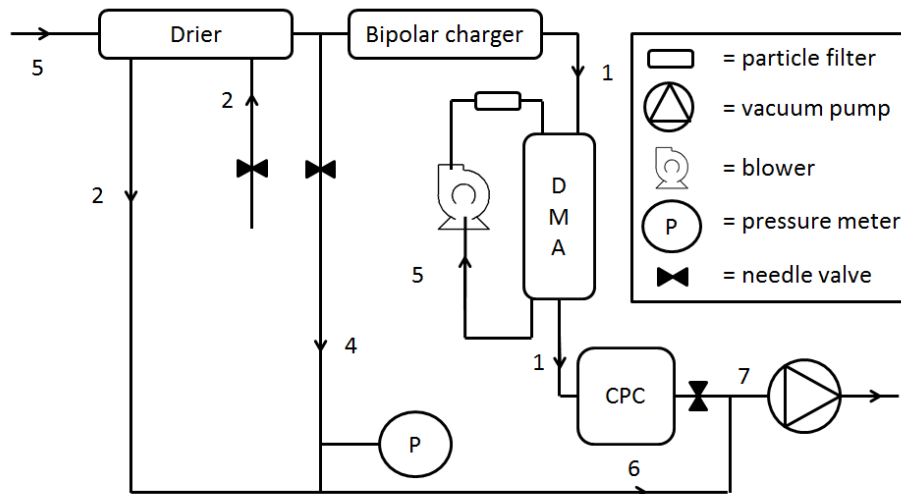


Fig. 3. The drier and the SMPS configuration. Numbers are denoting flow rates in L min^{-1} .

Title Page	
Abstract	Introduction
Conclusions	References
Tables	Figures
◀	▶
◀	▶
Back	Close
Full Screen / Esc	
Printer-friendly Version	
Interactive Discussion	

Contribution of ship traffic to aerosol particle concentrations

N. Kivekäs et al.

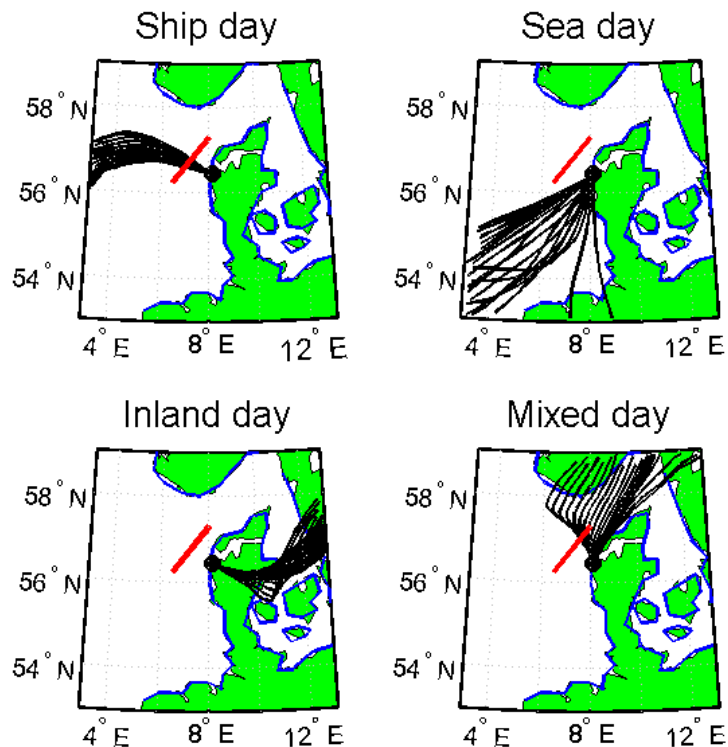


Fig. 4. Examples of trajectories during a ship day (all trajectories crossing the red line), a sea day (all trajectories arriving from sea, but not crossing the red line), an inland day (all trajectories arriving from inland) and a mixed day (more than one type of trajectories) arriving to the Høvsøre site, marked with a black dot on the maps. The black lines represent all calculated air mass back trajectories during the day and the red line marks the section of the outer edge of ship lane that the trajectories need to cross to be counted as having crossed the shipping lane.

Contribution of ship traffic to aerosol particle concentrations

N. Kivekäs et al.

Title Page

Abstract

Introduction

Conclusions

References

Tables

Figures

◀

▶

◀

▶

Back

Close

Full Screen / Esc

Printer-friendly Version

Interactive Discussion

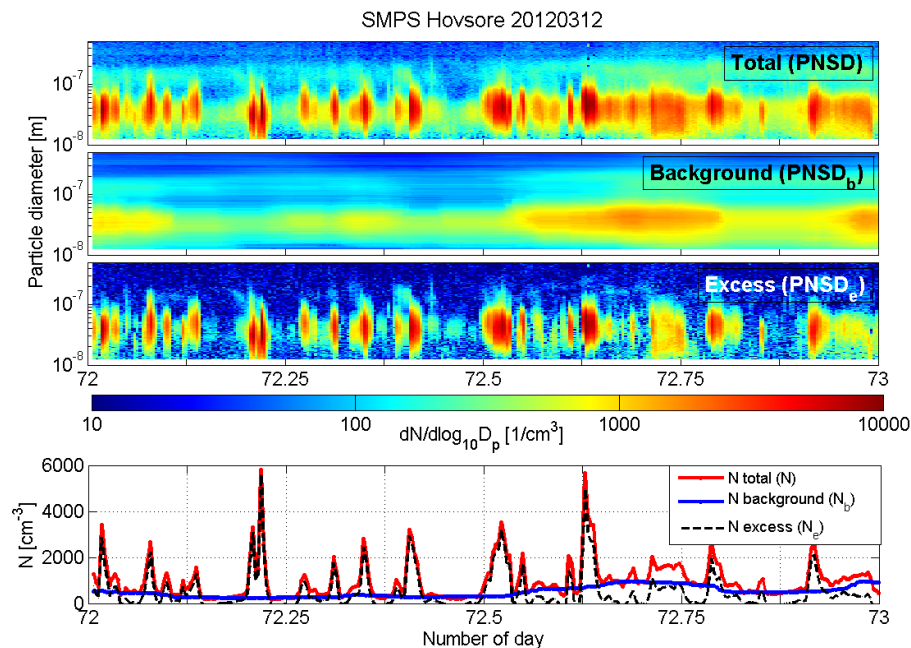


Fig. 5. Three uppermost graphs: color plots of total particle number size distribution (PNSD), background particle number size distribution (PNSD_b) and excess particle number size distribution (PNSD_e) as function of time during 12 March 2012. All three graphs have same color axis. Bottom graph: the corresponding number concentrations N , N_b and N_e as function of time.

Contribution of ship traffic to aerosol particle concentrations

N. Kivekäs et al.

Title Page

Abstract

Introduction

Conclusions

References

Tables

Figures

◀

▶

◀

▶

Back

Close

Full Screen / Esc

Printer-friendly Version

Interactive Discussion

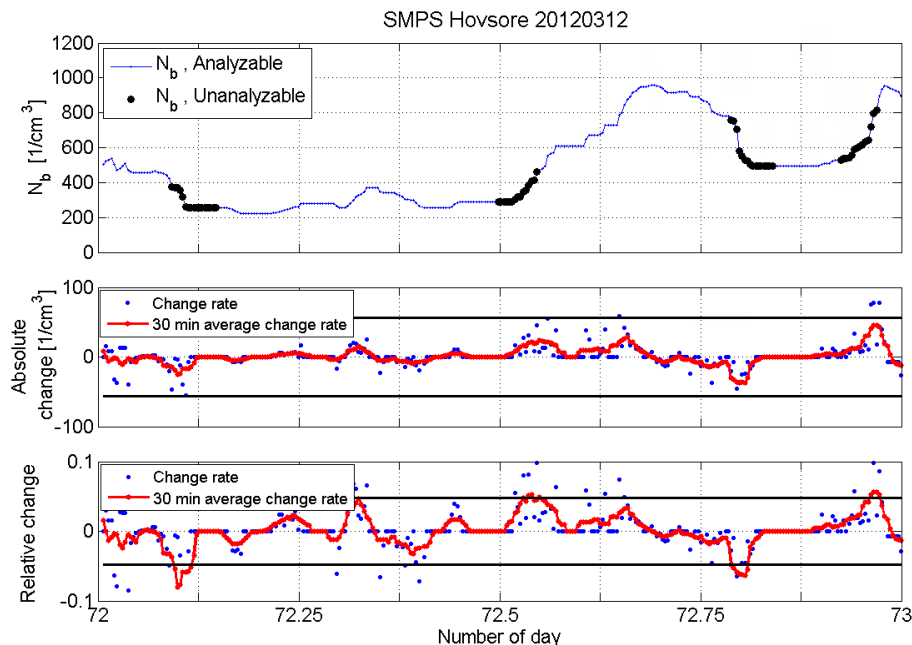


Fig. 6. Uppermost graph: background particle number concentration (N_b) as function of time during 12 March 2012 with analyzable and unanalyzable time periods marked separately. Middle graph: absolute change rate of N_b from individual data points and as 30 min sliding average. The black lines are the threshold values for marking a time period unanalyzable ($\pm 56 \text{ cm}^{-3}$). Bottom graph: same as middle graph but for relative change rate. Here the threshold values are $\pm 5\%$.

Contribution of ship traffic to aerosol particle concentrations

N. Kivekäs et al.

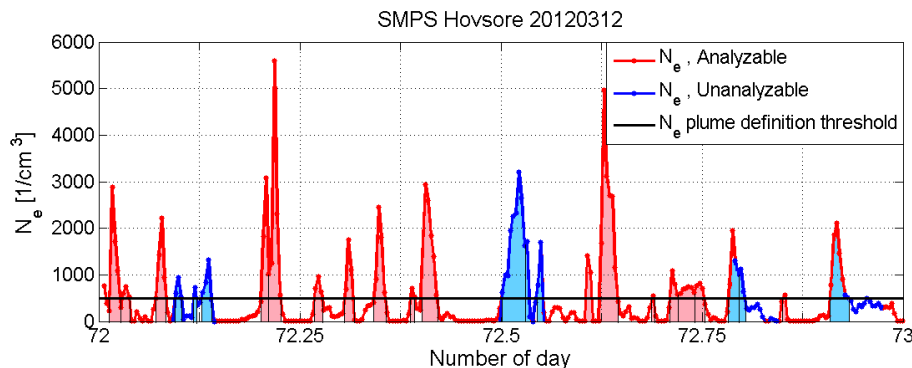


Fig. 7. Number concentration of excess particles (N_e) as function of time during 12 March 2012. Unanalyzable time periods are marked with blue line. Areas shaded with red are the analyzable plumes and areas shaded with blue are the unanalyzable plumes. Please note that even one unanalyzable data point makes the entire plume unanalyzable (e.g. the plume most to the right).

Contribution of ship traffic to aerosol particle concentrations

N. Kivekäs et al.

Title Page

Abstract

Introduction

Conclusions

References

Tables

Figures

◀

▶

◀

▶

Back

Close

Full Screen / Esc

Printer-friendly Version

Interactive Discussion

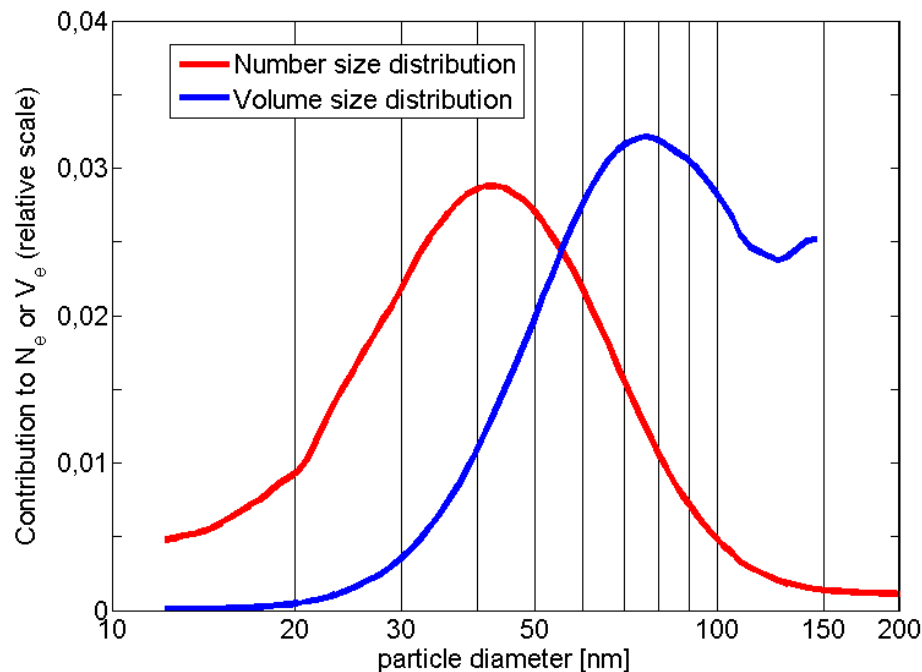


Fig. 8. Average particle size distributions of excess particles by number ($PNSD_e$) and volume ($PVSD_e$) between 10 and 200 nm in diameter.