

Supplementary Information

Increased absorption by coarse aerosol particles over the Gangetic-Himalayan region

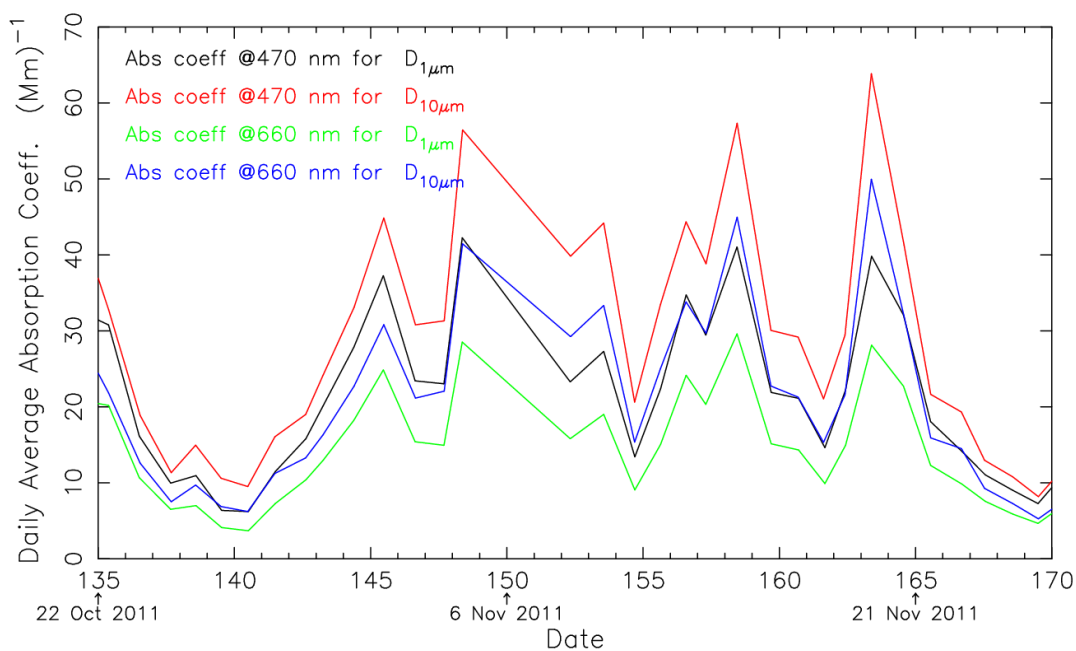
Vani Starry Manoharan^{1*}, Rao Kotamarthi¹, Yan Feng¹, Maria Cadeddu¹

¹Environmental Science Division, Argonne National Laboratory, Argonne, Illinois, USA

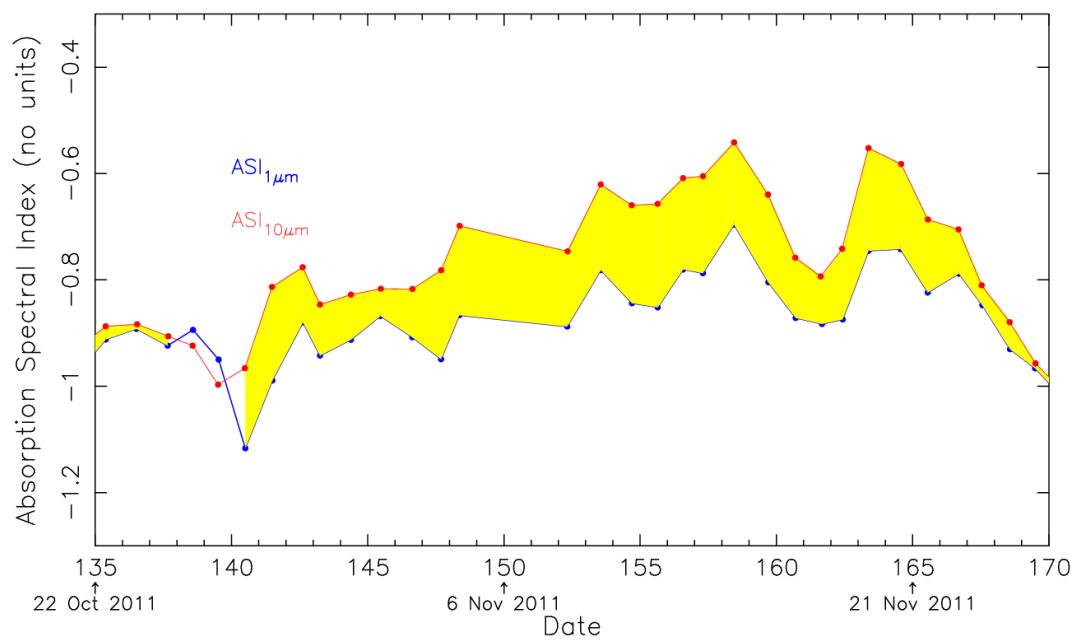
E-mail: vmanoharan@anl.gov

Note A

For clarity, the absorption coefficient and spectral index values are plotted in Fig. S1 for days 135-170. In this period, on the whole, the absorption rose to a higher value than previously. Moreover, the observed large deviation in absorption suggests the presence of large-micron aerosol, leading to increased absorption for $D_{1\mu\text{m}}$ particles and near-constant absorption for $D_{10\mu\text{m}}$ particles. These results suggest that significant amounts of super-micron particles were loaded continuously into the ambient aerosol over a period of about 15-20 days, starting at about day 140, and that this caused a steady increase in absorption for both $D_{1\mu\text{m}}$ and $D_{10\mu\text{m}}$ particles. The level of absorption attains a peak at about day 158.



15



16

17 **Supplementary Figure S1 – Daily averaged absorption coefficient (a) and ASI (b) for days 135-170.**

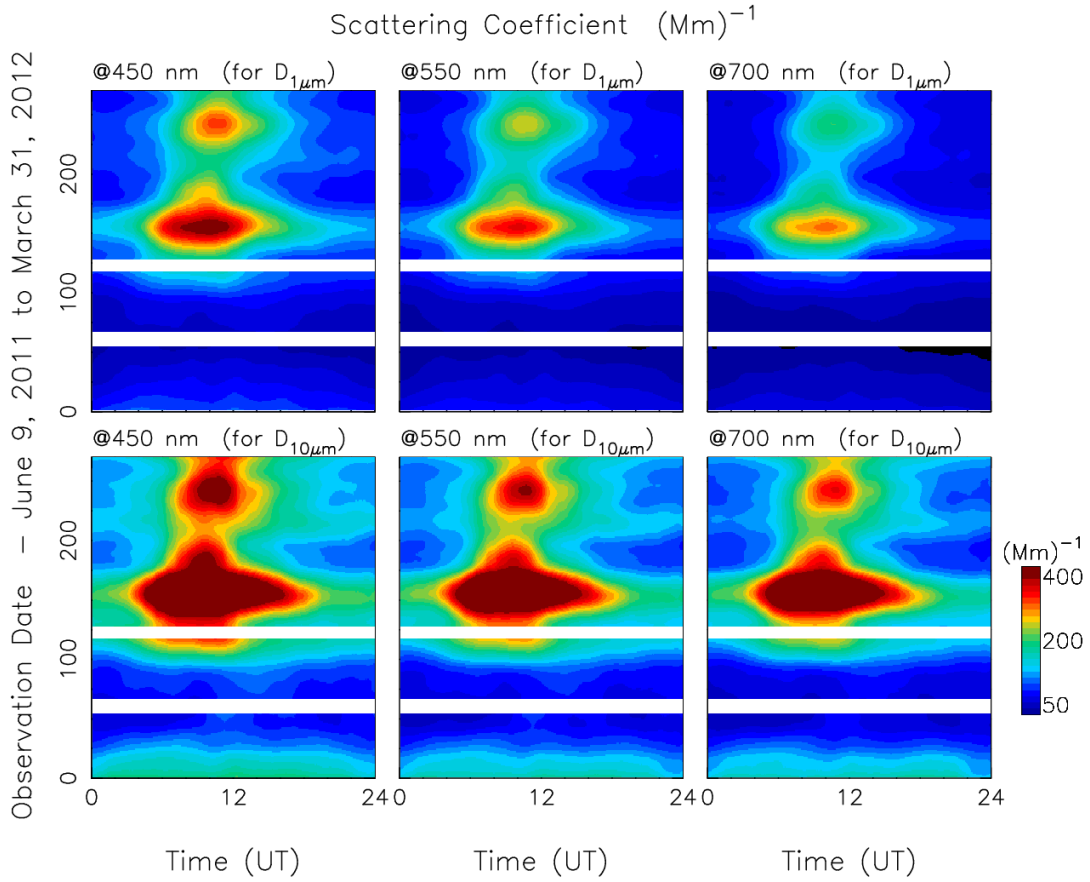
18

18

19 **Note B**

20 Daily variations of aerosol scattering coefficients in three wavelength bands — 450, 558 and 700 nm —
21 for $D_{1\mu\text{m}}$ and $D_{10\mu\text{m}}$ particles from June 9, 2011, to March 31, 2012. Data are missing in the white areas.

22



23

24

25 **Supplementary Figure S2 – Temporal and spectral variation of aerosol scattering between June 9,**
26 **2011 to March 31, 2012.**

27

28

29

30

31

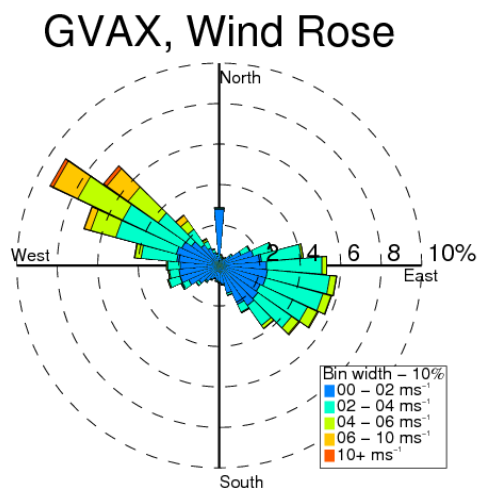
32

33

34 **Note C**

35 The surface wind measurements from GVAX indicate that the wind direction in Nainital was commonly

36 from the northwest and southeast.



37

38 **Supplementary Figure S3: Surface wind measurements from GVAX.**

39

40

41