

Supplement of Atmos. Chem. Phys., 14, 10619–10630, 2014  
<http://www.atmos-chem-phys.net/14/10619/2014/>  
doi:10.5194/acp-14-10619-2014-supplement  
© Author(s) 2014. CC Attribution 3.0 License.



*Supplement of*

## **Air quality in Delhi during the Commonwealth Games**

**P. Marrapu et al.**

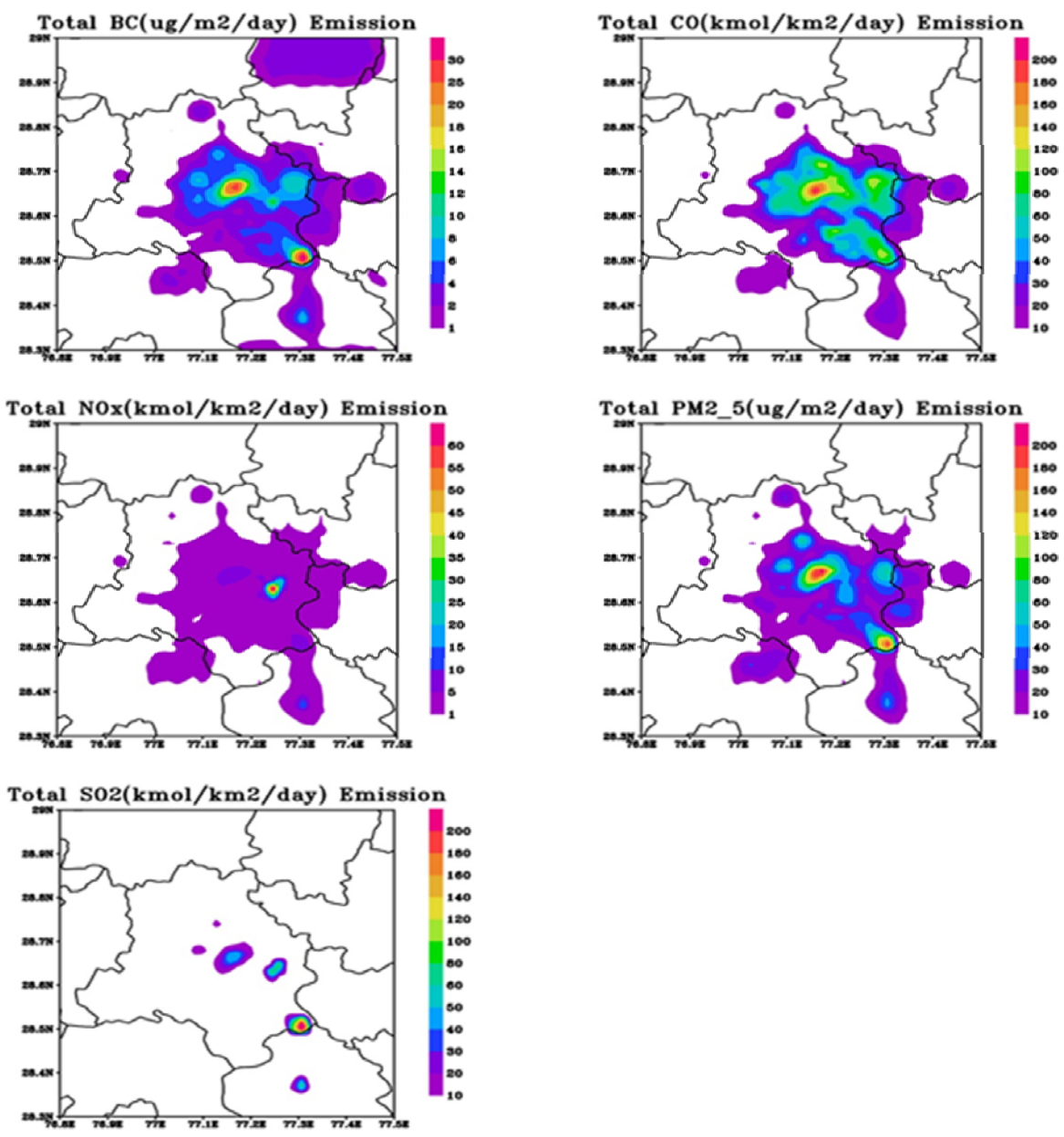
*Correspondence to:* P. Marrapu ([pallavi-marrapu@uiowa.edu](mailto:pallavi-marrapu@uiowa.edu))

44 Table S1 Comparison of 20-day mean observed and predicted concentrations of various species  
45 at all monitoring sites with Original Emissions

46

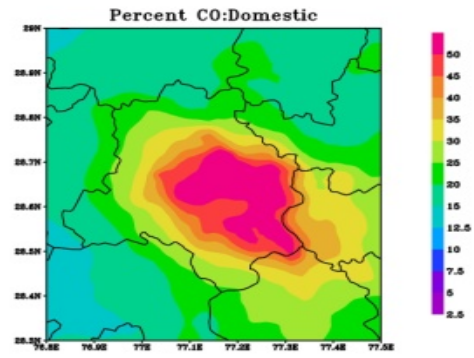
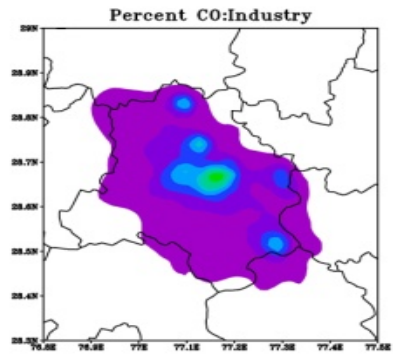
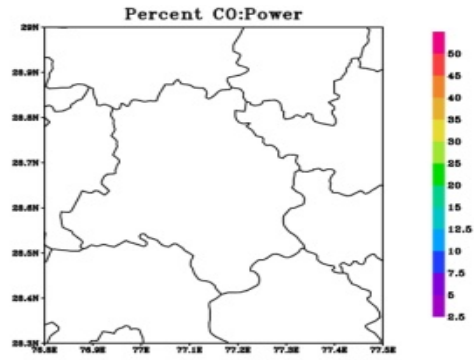
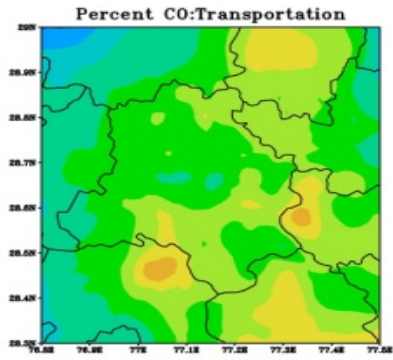
<b>NO<sub>x</sub>- Full</b>	<b>BC (<math>\mu\text{g}/\text{m}^3</math>)</b>	<b>CO (ppmv)</b>	<b>NO<sub>x</sub> (ppbv)</b>	<b>O<sub>3</sub> (ppbv)</b>	<b>O<sub>3</sub>- DayTime(ppbv)</b>	<b>PM<sub>2.5</sub> (<math>\mu\text{g}/\text{m}^3</math>)</b>	<b>PM<sub>10</sub> (<math>\mu\text{g}/\text{m}^3</math>)</b>
<b>Mean- obs</b>	<b>9.5</b>	<b>1.7</b>	<b>67.8</b>	<b>30.1</b>	<b>54.5</b>	<b>110.8</b>	<b>237.6</b>
<b>Mean- model</b>	<b>13.8</b>	<b>1.0</b>	<b>150.3</b>	<b>26.3</b>	<b>60.4</b>	<b>181.5</b>	<b>294.3</b>
<b>Bias</b>	<b>10.1</b>	<b>-0.5</b>	<b>91.3</b>	<b>0.3</b>	<b>12.5</b>	<b>83.6</b>	<b>83.5</b>
<b>RMSE</b>	<b>15.7</b>	<b>1.4</b>	<b>170.3</b>	<b>29.2</b>	<b>40.6</b>	<b>162.8</b>	<b>259.5</b>
<b>R</b>	<b>0.6</b>	<b>0.4</b>	<b>0.4</b>	<b>0.7</b>	<b>0.4</b>	<b>0.4</b>	<b>0.4</b>

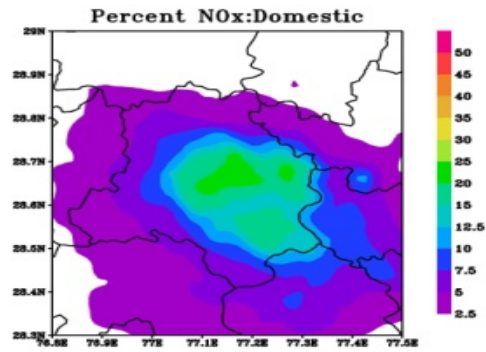
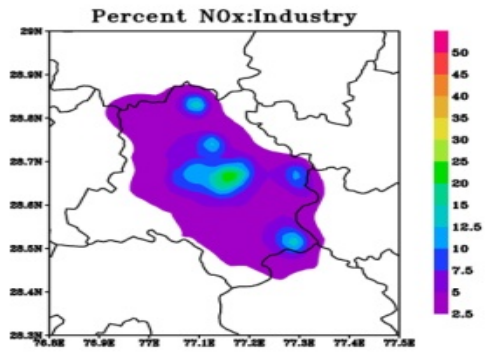
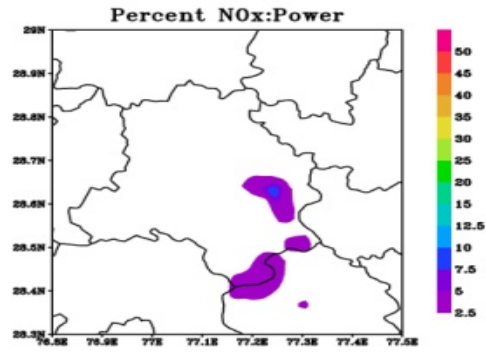
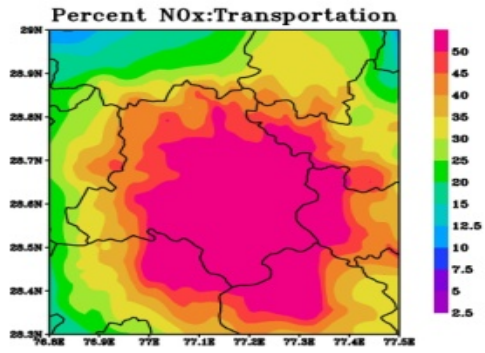
47



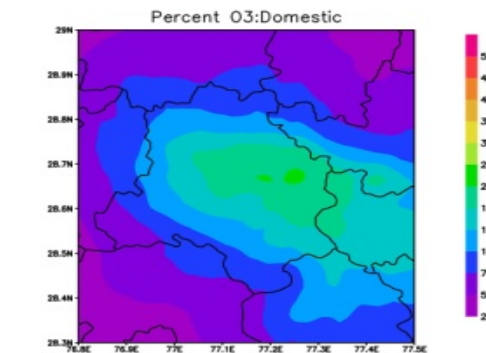
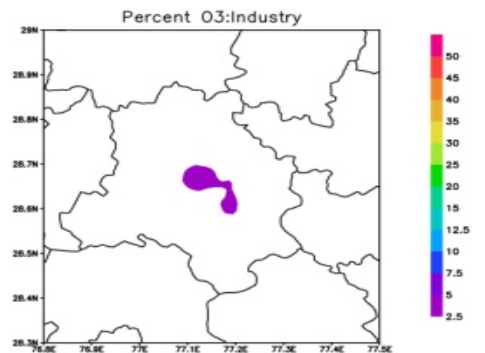
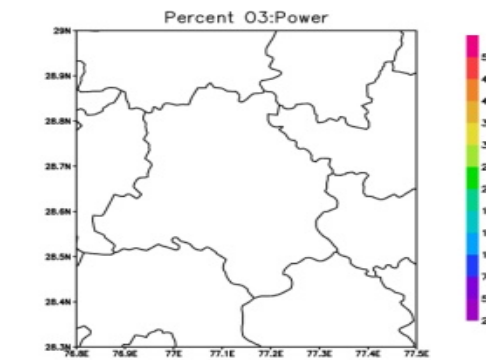
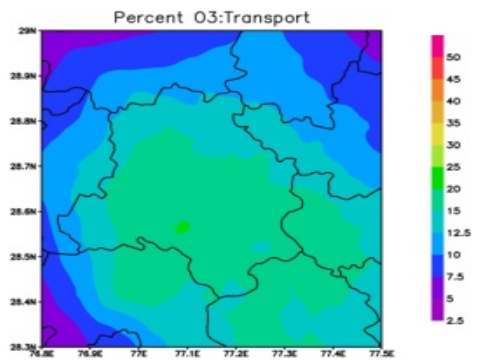
48

49 Fig S1 . Emission distributions of BC, CO, NO<sub>x</sub>, PM<sub>2.5</sub> and SO<sub>2</sub> units over Delhi.

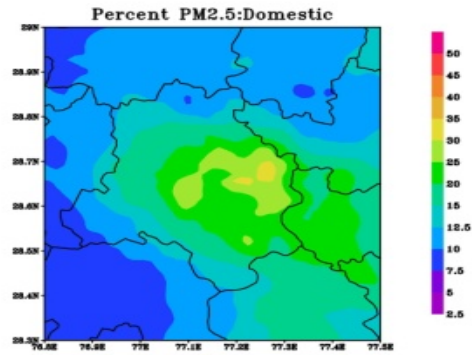
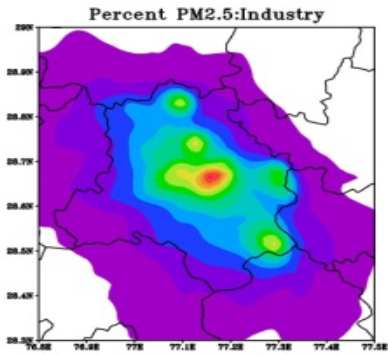
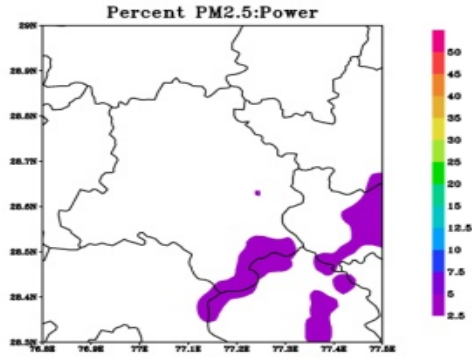
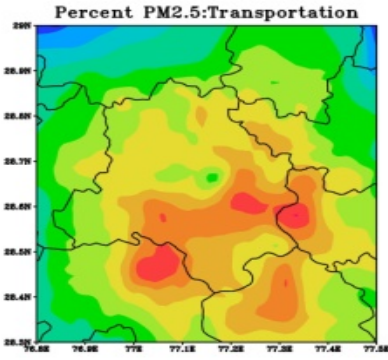




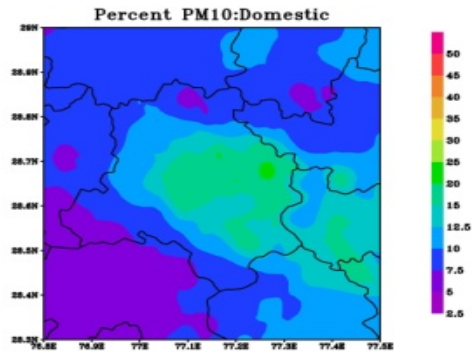
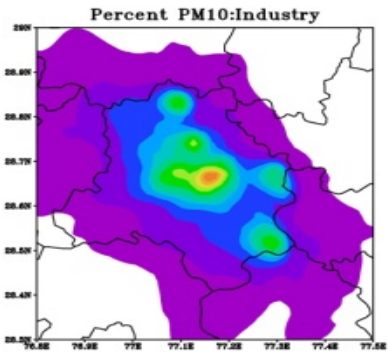
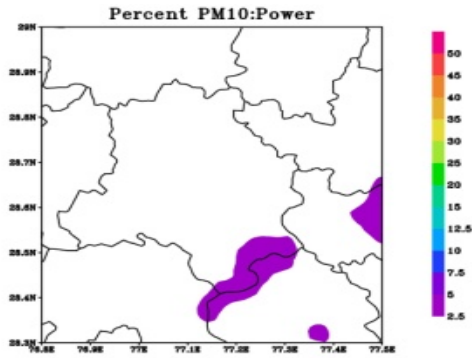
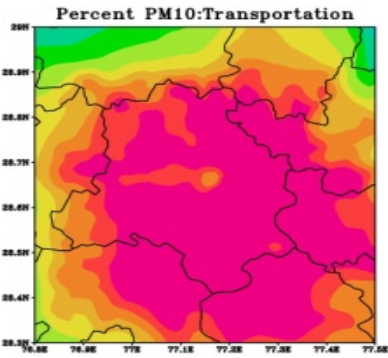
51



52



53



54

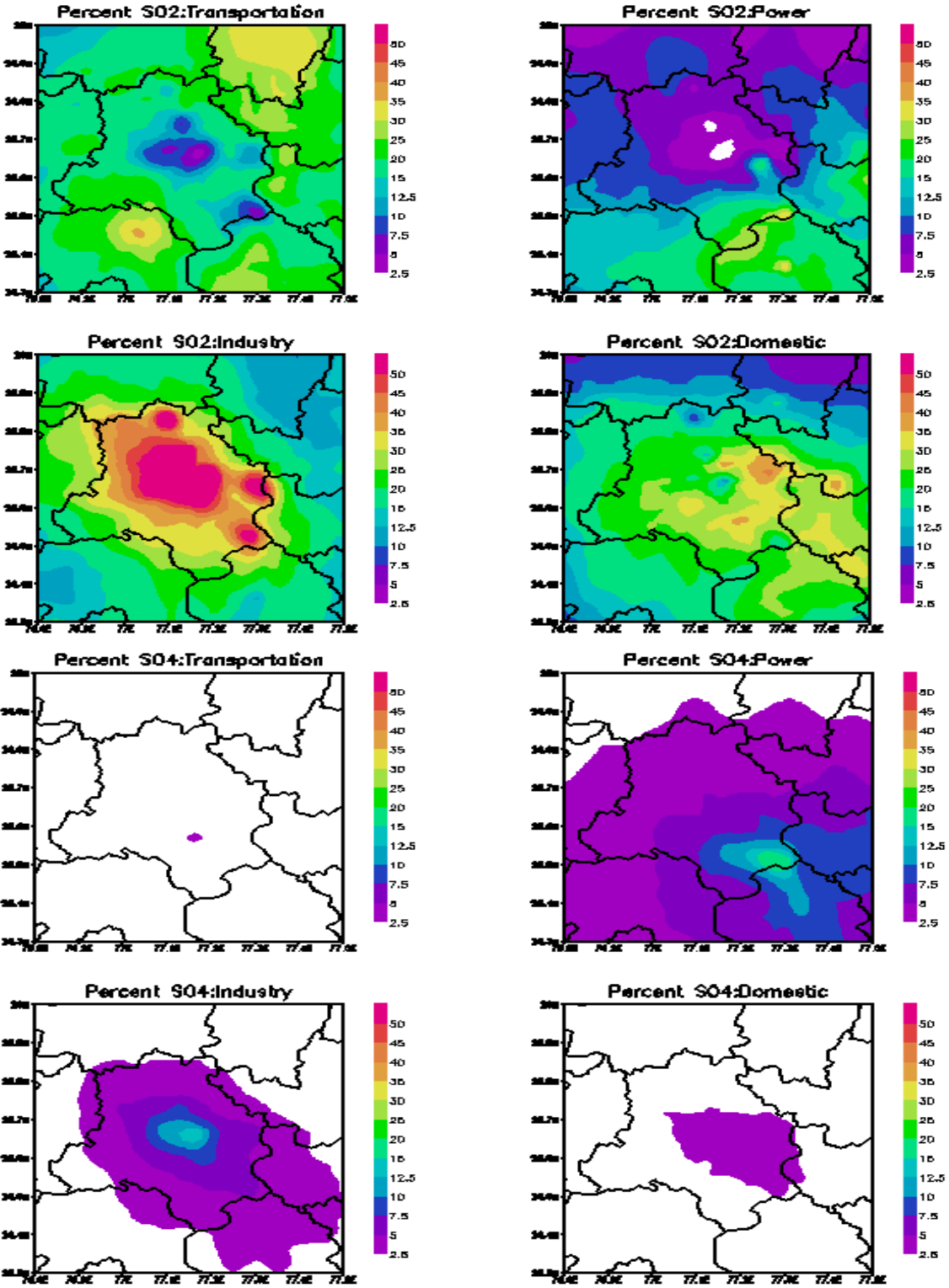
55

56

57

58





59

60

61 Fig S2. Twenty day mean percent contribution of each pollutant from different sectors.

62