

Health-cost
externalities of air
pollution in Europe

J. Brandt et al.

This discussion paper is/has been under review for the journal Atmospheric Chemistry and Physics (ACP). Please refer to the corresponding final paper in ACP if available.

Assessment of past, present and future health-cost externalities of air pollution in Europe and the contribution from international ship traffic using the EVA model system

J. Brandt¹, J. D. Silver¹, J. H. Christensen¹, M. S. Andersen¹, J. H. Bønløkke²,
T. Sigsgaard², C. Geels¹, A. Gross¹, A. B. Hansen¹, K. M. Hansen¹,
G. B. Hedegaard^{1,5}, E. Kaas³, and L. M. Frohn⁴

¹Aarhus University, Department of Environmental Science, Frederiksborgvej 399, 4000 Roskilde, Denmark

²Aarhus University, Section of Environment, Occupation and Health, Institute of Public Health, Bartholins Allé 2, Building 1260, 8000 Aarhus C, Denmark

³University of Copenhagen, Planet and Geophysics, Niels Bohr Institute, Juliane Maries Vej 30, 2100 København Ø, Denmark

⁴Aarhus University, AU Knowledge, Tuborgvej 164, 2400 København NV, Denmark

⁵now at: Centre for Environmental and Climate Research, Lund University, Sölvegatan 37, 223 62 Lund, Sweden

Title Page

Abstract

Introduction

Conclusions

References

Tables

Figures

⏪

⏩

◀

▶

Back

Close

Full Screen / Esc

Printer-friendly Version

Interactive Discussion



Received: 7 January 2013 – Accepted: 8 February 2013 – Published: 6 March 2013

Correspondence to: J. Brandt (jbr@dmu.dk)

Published by Copernicus Publications on behalf of the European Geosciences Union.

ACPD

13, 5923–5959, 2013

Health-cost externalities of air pollution in Europe

J. Brandt et al.

Title Page

Abstract

Introduction

Conclusions

References

Tables

Figures



Back

Close

Full Screen / Esc

Printer-friendly Version

Interactive Discussion



Abstract

An integrated model system, EVA (Economic Valuation of Air pollution), based on the impact-pathway chain has been developed, to assess the health-related economic externalities of air pollution resulting from specific emission sources or sectors. The model system can be used to support policy-making with respect to emission control. In this study, we apply the EVA system to Europe, and perform a more detailed assessment of past, present, and future health-cost externalities of the total air pollution levels in Europe (including both natural and anthropogenic sources), represented by the years 2000, 2007, 2011, and 2020. We also assess the contribution to the health-related external costs from international ship traffic with special attention to the international ship traffic in the Baltic and North Seas, since special regulatory actions on sulphur emissions, called SECA (sulphur emission control area), have been introduced in these areas. We conclude that despite efficient regulatory actions in Europe in recent decades, air pollution still constitutes a serious problem to human health, hence the related external costs are considerable. The total health-related external costs for the whole of Europe is estimated at 803 bn Euro yr⁻¹ for the year 2000, decreasing to 537 bn Euro yr⁻¹ in the year 2020. We estimate the total number of premature deaths in Europe in the year 2000 due to air pollution to be around 680 000 yr⁻¹, decreasing to approximately 450 000 in the year 2020. The contribution from international ship traffic in the Northern Hemisphere was estimated to 7 % of the total health-related external costs in Europe in the year 2000, increasing to 12 % in the year 2020. In contrast, the contribution from international ship traffic in the Baltic Sea and the North Sea decreases 36 % due to the regulatory efforts of reducing sulphur emissions from ship traffic in SECA. Introducing this regulatory instrument for all international ship traffic in the Northern Hemisphere, or at least in areas close to Europe, would have a significant positive impact on human health in Europe.

Health-cost externalities of air pollution in Europe

J. Brandt et al.

Title Page

Abstract

Introduction

Conclusions

References

Tables

Figures



Back

Close

Full Screen / Esc

Printer-friendly Version

Interactive Discussion



1 Introduction

Air pollution has significant negative impacts on human health and well-being, entailing substantial economic consequences. In order to carry out regulatory actions, knowledge about the magnitude of the problem, both with respect to number of cases of the different health impacts (morbidity and mortality) as well as estimates of the total external costs related to these impacts is required. An assessment of the health-related external costs from air pollution, based on the best available methodologies, is a powerful tool for decision making, since the external costs can be compared to other socio-economic costs and can be used for ranking of environmental stressors by health impact, see e.g. Hänninen et al. (2011).

Amann et al. (2005) and Watkiss et al. (2005) provide recent examples of this in the European context; these authors modelled the effects of implementing the EU's directives on atmospheric ozone and PM concentrations. They estimated that the annual costs of ozone and PM in the EU25 countries amounted to between 276 bn Euros yr^{-1} and 790 bn Euros yr^{-1} in the year 2000, and that this is expected to decrease by 87 bn Euros yr^{-1} and 181 bn Euros yr^{-1} in 2020, if the directives are followed. A similar assessment of reducing emissions by 30 % in Europe is found in Jensen and Leetz (2010).

We have developed an integrated model system, EVA (Economic Valuation of Air pollution; Brandt et al., 2013), to assess health-related economic externalities of air pollution. The EVA system integrates a regional-scale atmospheric chemistry transport model, DEHM (the Danish Eulerian Hemispheric Model), gridded population data, exposure-response functions, and monetary valuation applicable for European conditions. The EVA system has the advantage compared to other similar systems, that it estimates the actual contribution from specific emission sources and how they influence air pollution levels without assuming linearity of the non-linear behaviour of atmospheric chemistry. For this purpose a tagging method has been implemented, calculating source-receptor relationships where the emission scenario of interest is

ACPD

13, 5923–5959, 2013

Health-cost externalities of air pollution in Europe

J. Brandt et al.

Title Page

Abstract

Introduction

Conclusions

References

Tables

Figures

◀

▶

◀

▶

Back

Close

Full Screen / Esc

Printer-friendly Version

Interactive Discussion



calculated simultaneously together with the background chemistry in the DEHM model. The DEHM model as well as the full integrated EVA system is part of the integrated THOR air pollution and management system (Brandt et al., 2001a,b,c, 2003, 2007, 2009).

Using the EVA system, we assessed the total impacts on human health and related external costs due to total air pollution levels in Europe, and compared the results to other similar studies. Furthermore, we estimated the impacts and external costs of air pollution stemming from emissions from international ship traffic, since this sector is an important contributor. As part of this, we examined the impacts of introducing the so-called SECA area (Sulphur Emission Control Area) in the North Sea and Baltic Sea. Both for international ship traffic and for the total air pollution levels, results are presented for past, present, and future conditions, represented by the emission years 2000, 2007, 2011, and 2020. For the first three years, emissions are based on the EMEP emission database. For the year 2020, emissions are based on the NEC-II emissions for Europe in order to assess the impacts of the future general emission reductions.

More specifically, the aim in this study can be divided into answering the following three questions: (1) what are the past, present, and future impacts on human health and related external costs in Europe from all international ship traffic in the Northern Hemisphere? (2) What are the past, present, and future impacts on human health and related external costs in Europe from international ship traffic in the Baltic Sea and the North Sea? (3) What are the total health impacts and associated externalities from the past, present, and future total air pollution levels from all anthropogenic and natural sources?

There are two reasons for estimating the total impacts from past, present, and future air pollution levels: first, in the public debate as well as in political decision-making processes, it is useful to have estimates of the total impacts from air pollution in order to quantify the magnitude of the problem. These calculations can be used as a basis for socio-economic research and discussions on the costs and benefits of carrying out

Health-cost externalities of air pollution in Europe

J. Brandt et al.

Title Page

Abstract

Introduction

Conclusions

References

Tables

Figures

◀

▶

◀

▶

Back

Close

Full Screen / Esc

Printer-friendly Version

Interactive Discussion



emission-reduction strategies. Second, the results can be compared to other similar studies where the total impacts from air pollution have been estimated. The most important comparison in this case is with the results from the CAFE (Clean Air for Europe) project (Watkiss et al., 2005; Amann et al., 2005). These comparisons constitute the closest we can come to an evaluation of the integrated EVA model system. If the results are similar for the total air pollution levels, we can have greater confidence in the results from the scenarios, yet we emphasise that the two results being compared are both subject to significant uncertainties and different assumptions.

In Sect. 2, a short description of the EVA model system is given. In Sect. 3, the simulations set up to answer the questions defined above, are described and the results from the individual scenarios using the EVA model system are presented. Section 4 includes the general results and these are discussed and compared with similar results from CAFE (Clean Air For Europe). Finally Sect. 5 contains the overall conclusions of this work.

2 The integrated EVA model system

The concept of the EVA system (Frohn et al., 2006, 2007; Andersen et al., 2006, 2007, 2008; Brandt et al., 2010, 2013) is based on the impact pathway chain (e.g. Friedrich and Bickel, 2001) and also used in the EcoSense model (ExternE, 1997, 1998, 1999, 2005). The EVA system consists of a regional-scale chemistry transport model (CTM), the DEHM model (Christensen, 1997; Christensen et al., 2004; Frohn et al., 2001, 2002; Brandt et al., 2012), address-level or gridded population data, exposure-response functions for health impacts, and economic valuations of the impacts from air pollution. A detailed description of the integrated EVA model system is given in Brandt et al. (2013).

The essential idea behind the EVA system is that the best available and most accurate, yet computationally demanding methods are used in each part of the impact-pathway chain. The EVA system uses a comprehensive and thoroughly tested chemical

Health-cost externalities of air pollution in Europe

J. Brandt et al.

Title Page

Abstract

Introduction

Conclusions

References

Tables

Figures

◀

▶

◀

▶

Back

Close

Full Screen / Esc

Printer-friendly Version

Interactive Discussion



Health-cost externalities of air pollution in Europe

J. Brandt et al.

Title Page

Abstract

Introduction

Conclusions

References

Tables

Figures

◀

▶

◀

▶

Back

Close

Full Screen / Esc

Printer-friendly Version

Interactive Discussion



transport model when calculating how specific changes to emissions affect air pollution levels. The geographic domain used in DEHM covers the Northern Hemisphere, and therefore describes the intercontinental atmospheric transport, and includes higher resolution two-way nesting over Europe and even higher resolution over northern Europe (see Figs. 1, 2, and 3, respectively). All scenarios are simulated individually and not estimated using linear interpolation or extrapolation from standard reductions, as used in the RAINS/GAINS system (Alcamo et al., 1990; Klaassen et al., 2004).

To estimate the effect of a specific emission source or emission sector, emission inventories for the specific sources are implemented in DEHM, together with all other relevant anthropogenic and natural emission sources. However, quantifying the contribution from specific emission sources to the atmospheric concentration levels is a challenge, especially if the emissions of interest are relatively small. Numerical noise in atmospheric models can be of a similar order of magnitude as the signal from the emissions of interest. To calculate the δ -concentrations (i.e. the marginal difference in regional ambient concentration levels due to a specific emission source), we have implemented a “tagging” method (Brandt et al., 2012, 2013), to examine how specific emission sources influence air pollution levels, without assuming linear behaviour of atmospheric chemistry, and at the same time reducing the influence from the numerical noise. This method is more precise than taking the difference between two concentration fields. Tagging methods have been used elsewhere with chemical transport models, (see, e.g. Pfister et al., 2008; Sudo and Akimoto, 2007), and are often used for specific species. Here, however, we use tagging to track the effects of the specific source for the full chemical scheme.

Estimates of δ -concentrations are combined with address-level population data for Denmark and gridded population data for the rest of Europe, to calculate the exposure. Population-level health outcomes are estimated by combining population-level exposure with exposure-response functions found in the literature. External costs for the entire population are estimated using cost functions customised for European conditions in the EVA model system (Brandt et al., 2013).

3 Definition of scenarios and detailed results

In this section, a number of model simulations are defined in order to answer specific questions (Sect. 3.1). In Sect. 3.2, the results from the individual scenario runs are discussed. The overall results will be presented and discussed at an aggregated level in Sect. 4.

3.1 Definition of overall questions and scenarios

All results are given as human health impacts and external costs for the whole of Europe, covered by the second domain in the DEHM model (see Fig. 2). In the northern part of Europe, higher resolution results are obtained and substitute the lower resolution results in this area. When making decisions about regulation of specific emission sectors, it is important to consider all impacts from the emission sources of interest from all affected countries. Therefore, we take into account the impacts in the whole European model domain.

To answer the overall questions given in the introduction, a number of different model simulations have been defined in order to estimate health-related externalities from different kinds of emission sources (see Table 1). Each scenario is defined by the following three attributes: (1) the *region* where the emission sources are located. In this work, the regions are the full northern hemispheric model domain (all), or the Baltic Sea together with the North Sea (BaS-NoS). (2) The emission sectors are defined using the Selected Nomenclature for Air Pollution (SNAP) categories. In this case we have chosen all anthropogenic and natural emissions in the Northern Hemisphere (all) or SNAP category 15, which we have defined as international ship traffic in our model system (this is usually contained in SNAP category 8 – “other mobile sources”). (3) The *emission year* (either 2000, 2007, 2011 or 2020) was chosen because it is relevant for regulatory emission reduction actions. In all years maximum sulphur content has been defined for the heavy bunker fuel used by the international ships in the SECA areas. For the year 2020, the emission scenario in the present work consists of a specific set

Title Page

Abstract

Introduction

Conclusions

References

Tables

Figures

◀

▶

◀

▶

Back

Close

Full Screen / Esc

Printer-friendly Version

Interactive Discussion



Health-cost externalities of air pollution in Europe

J. Brandt et al.

Title Page

Abstract

Introduction

Conclusions

References

Tables

Figures



Back

Close

Full Screen / Esc

Printer-friendly Version

Interactive Discussion



of assumptions. It is expected that a new international directive on national emission ceilings to be reached in 2020 (NEC-II) is proposed in the near future. In this study the applied scenario for land-based emissions is a combination of the EU Thematic Strategy on Air Pollution and scenarios for the 27 EU countries prepared by the International Institute for Applied Systems Analysis (Amann et al., 2005) as part of the preparatory work of the upcoming NEC-II directive.

The scenarios All/15 (see Table 1 for the definition) for the years 2000, 2007, 2011, and 2020 are defined in order to answer question 1 defined in the introduction: what are the past, present and future impacts on human health and related external costs in Europe from all international ship traffic in the Northern Hemisphere? In these simulations, the EMEP emissions covering Europe have been used for the model calculations. The 2011 emissions are based on the 2007 emissions but with changes according to the agreements within the Sulphur Emission Control Areas (SECA) for international ship traffic. For the year 2020, the total emissions for each country are based on the National Emission Ceilings directive, version 2 (NEC-II) but using the 2007 spatial emission distribution, since the NEC-II emissions are given as country totals. In the four years (2000, 2007, 2011, and 2020), different ceilings for the sulphur content of the heavy bunker fuel used by the ships are introduced in the SECA area. For the year 2000, a maximum of 2.7 % of sulphur in the fuel is allowed, decreasing to 1.5 % in 2007, 1 % in 2011 and 0.1 % in the year 2015, the latter used for the 2020 scenario in this study.

The scenarios BaS-NoS/15 are defined to answer question 2: what are the past, present and future impacts on human health and related external costs in Europe from international ship traffic in the Baltic Sea and the North Sea? The scenarios are similar to the scenarios defined above, except in this case we examine only emissions from international ship traffic in the Baltic Sea and the North Sea.

The All/all scenarios are defined to answer question 3: what are the total health impacts and associated externalities from the past, present and future total air pollution levels from all anthropogenic and natural sources? In this case we aim to estimate the

total impact on human health and related externalities from all air pollution, regardless of its origin. To do this, the total air pollution levels due to all emissions (both anthropogenic and natural) for the four different years are used as input to the human health impacts module as well as the external cost module in the EVA model system.

5 3.2 Examples of DEHM model results from the individual scenarios

In this section, we present some examples of DEHM model results from the individual scenarios defined in the previous section. The figures shown include plots of annual mean air pollution concentrations over the three geographical domains (Northern Hemisphere, Europe, northern Europe) either as total air pollution levels or as δ -functions from the individual model runs for the six chemical compounds related to health impacts in the system (SO_2 , SO_4^{2-} , CO, primary $\text{PM}_{2.5}$ (including BC, OC and mineral dust), NO_3^- , and O_3). Meteorological data for all scenarios are based on the year 2000 and calculated using the MM5v3 meteorological model defined on the same nested grids as the DEHM model (Brandt et al., 2012).

Figures 1–3 show the mean annual air pollution levels due to the emissions from the whole Northern Hemisphere for the year 2000. Results are shown for the model domains covering the Northern Hemisphere (domain 1), Europe (domain 2), and northern Europe (domain 3). Figures 1–3 correspond to the scenarios All/all for the year 2000 in Table 1.

Figure 4 shows the mean annual air pollution levels for the year 2020 (European domain). The corresponding result for the year 2000 is shown in Fig. 2. Figure 4 corresponds to the scenarios All/all for the year 2020 in Table 1.

Figures 5 and 6 show the contribution to the annual mean air pollution levels (δ -concentrations) due to the emissions from the Northern Hemisphere for SNAP category 15 (defined here as international ship traffic) for the years 2000 and 2020, respectively. The figures correspond to the scenarios All/15 in Table 1. While the land based emissions in general are decreasing, the emissions from the international ship traffic

Health-cost externalities of air pollution in Europe

J. Brandt et al.

Title Page

Abstract

Introduction

Conclusions

References

Tables

Figures



Back

Close

Full Screen / Esc

Printer-friendly Version

Interactive Discussion



are generally increasing (except in the North Sea and Baltic Sea) and therefore it is expected that the relative impacts from ship traffic will increase in the future.

4 Overall results and discussions

The main objective of this work is to make a general assessment of the health-related externalities of air pollution, at the European level. This section describes this assessment, first related to the health impacts in Sect. 4.1 and to the total health related externalities in Sect. 4.2. In Sect. 4.3 a comparison with results from Clean Air for Europe is given.

4.1 Health impacts

The overall EVA model results for human health impacts are presented in the tables in this section. The tables summarise the results that are related to the three overall questions defined in the introduction.

Table 2 presents the number of cases of different health impacts in Europe, related to international ship traffic in the Northern Hemisphere (scenario: All/15) for the four different years. The results in this table relate to question 1. Table 3 gives the number of cases in Europe related to international ship traffic in the Baltic Sea and the North Sea (scenario: BaS-NoS/15) for the four different years. The results in this table relate to question 2. Finally, Table 4 shows the number of cases in Europe, due to the total air pollution concentrations (scenario: All/all) for the four different years. The results in this table relate to question 3: what are the total impacts from the past, present, and future air pollution levels? As an example of these results, Fig. 7 shows the geographical distribution of premature deaths in Europe calculated from the chronic YOLL for the year 2000 divided by a factor of 10.6 as given in (Watkiss et al., 2005).

The results in the Tables 2–4 show that the impacts on human health due to air pollution from the different sectors are predicted to decrease during the period 2000–2020,

Health-cost externalities of air pollution in Europe

J. Brandt et al.

Title Page

Abstract

Introduction

Conclusions

References

Tables

Figures



Back

Close

Full Screen / Esc

Printer-friendly Version

Interactive Discussion



with the exception of the impacts due to international ship traffic, where an increase is expected for the year 2020. This is due to a general increase in international ship traffic according to the projected ship emissions provided by Corbett and Fischbeck (1997).

4.2 The total health-related cost externalities

In this section, the external costs are given for the different scenarios and we present our answers to the questions defined in the introduction.

Section 4.1 included a summary of the human health impacts. Table 5 shows the total external costs in Euros for the whole of Europe related to these health impacts, broken down by chemical compound for all the different scenarios. Exposure-response functions are included for both SO_2 and SO_4^{2-} . Sulphur emissions are mainly (95 %) emitted as SO_2 , which in the atmosphere is chemically transformed into SO_4^{2-} . Therefore the total external costs related to the emission of SO_2 include the human health impacts from both SO_2 and SO_4^{2-} (cf. “Total S” in Table 5). Similarly, the external costs related to O_3 and NO_3^- is summed into “Total N”. Emissions of NO_x can lead to both a decrease and an increase of O_3 in different areas, and both the costs and the benefits are included in the external costs for O_3 . The primary emitted part of $\text{PM}_{2.5}$ consists of mineral dust, black carbon, and organic carbon; these are treated as inert tracers in the DEHM model, and can therefore be considered as a direct effect due to emissions of the same chemical compound.

In Table 6, the total health-related externalities for Europe are shown for all scenarios. These include: the international ship traffic in the Northern Hemisphere (All/15), the international ship traffic in the Baltic Sea and the North Sea (BaS-NoS/15), and all emissions in the whole of Europe (All/all). All costs are in 2006 prices. All results covering the three questions in the introduction are given in Table 6 as external costs for the whole of Europe. For international ship traffic and for all emissions from the whole of Europe, simulations for four different years (2000, 2007, 2011, and 2020) were carried out in order to examine the evolution of these costs over time. From the results in

Health-cost externalities of air pollution in Europe

J. Brandt et al.

Title Page

Abstract

Introduction

Conclusions

References

Tables

Figures

◀

▶

◀

▶

Back

Close

Full Screen / Esc

Printer-friendly Version

Interactive Discussion



Table 6, including the total health cost externalities, combined with the results for health impacts in Tables 2–5, we can now answer the questions defined in the introduction:

Answer to question 1: Emissions from international ship traffic (scenarios All/15) constitute a major problem in terms of its impacts on human health. According to Corbett and Fischbeck (1997), pollution from international ship traffic causes roughly 60 000 mortalities each year worldwide. In our calculations with the EVA system, only the human health impacts in Europe were taken into account. The impacts on human health are given in Table 2. According to our results, the number of premature deaths due to ship emissions for Europe alone is 49 500 for the year 2000 increasing to 53 400 in the year 2020 (chronic YOLL divided by the factor 10.6 given in the CAFE report; Watkiss et al., 2005). A similar study for the USA performed by the US-EPA estimates 21 000 premature deaths in the US with a related external cost of \$47–\$110 bn in the year 2020 (US-EPA, 2009), which would suggest that the result by Corbett and Fischbeck (1997) might be underestimated. We estimate that the total external costs in Europe will increase from 58.4 bn Euros yr⁻¹ in the year 2000 to 64.1 bn Euros yr⁻¹ in the year 2020. In the intervening years, smaller decreases are seen. The decrease for the years 2007 and 2011 is due to regulations in the sulphur content in the fuel used by the ships in the SECA area, while the increase in the total external costs for the year 2020 is due to a projected increase in ship traffic worldwide.

If we examine the external costs from all international ship traffic (All/15) in relation to the other sources, then the ship traffic is estimated to be responsible for 7 % of the total health effects in Europe due to air pollution in the year 2000, increasing to 12 % in the year 2020. The corresponding numbers for Denmark (not shown in the tables), which is surrounded by heavy ship traffic, are 18 % in the year 2000 and 19 % in the year 2020. Even though the total health related external costs are decreasing from 805 mio Euros yr⁻¹ to 484 mio Euros yr⁻¹ in Denmark, the contribution from international ship traffic remains unchanged.

Answer to question 2: The Baltic Sea and the North Sea are included in the SECA areas, and it is therefore particularly interesting from a northern European point of view

Health-cost externalities of air pollution in Europe

J. Brandt et al.

Title Page

Abstract

Introduction

Conclusions

References

Tables

Figures



Back

Close

Full Screen / Esc

Printer-friendly Version

Interactive Discussion



Health-cost externalities of air pollution in Europe

J. Brandt et al.

Title Page

Abstract

Introduction

Conclusions

References

Tables

Figures

◀

▶

◀

▶

Back

Close

Full Screen / Esc

Printer-friendly Version

Interactive Discussion



to investigate the impacts from regulating these areas. Furthermore, the ship traffic in these areas is relatively large compared to other regions of the world. According to our results, the total health-related external cost from international ship traffic in the SECA area is 22.0 bn Euros yr⁻¹ for the year 2000, decreasing to 14.1 bn Euros yr⁻¹ for the year 2020. The impacts on health, related to this emission sector are given in the Table 3.

For Denmark, we estimate that the external costs due to international ship traffic in the Baltic Sea and the North Sea is 627 million Euros yr⁻¹ for the year 2000, decreasing to 357 million Euros yr⁻¹ for the year 2020 – a decrease of 43%. From this we can conclude that the regulatory efforts of reducing sulphur emissions in the SECA area are expected to significantly reduce health-related external costs. This indicates that a similar regulation of the international ship traffic in the whole world would have a significant positive effect on human health.

However, the impacts from ship emissions in the SECA area remain significant. The reason for this is that the NO_x emissions from international ship traffic are not regulated in this scenario, and NO_x is a precursor for nitrate particles (NO₃⁻). In fact, if we calculate the contribution to external costs in Denmark from international ship traffic in the Baltic Sea and the North Sea, in relation to the external costs from the total pollution levels (by dividing the results from BaS-NoS/15 with All/all for the respective years), it remains nearly constant at 14% over the years from the year 2000 to the year 2020, due to the similar decrease in the total air pollution levels from other sources.

Answer to question 3: The total health-related external costs in Europe due to the total air pollution levels from all emission sources in the Northern Hemisphere are calculated to be 803 bn Euros yr⁻¹ for the year 2000, decreasing to 537 bn Euros yr⁻¹ in the year 2020 (scenarios All/all). The decrease in the costs is due to the general emission reductions in Europe following the anticipated implementation of the NEC-II, and also due to the regulation of international ship traffic by introducing the SECA areas. For Denmark, the estimated external costs are 4.54 bn Euros yr⁻¹ for the year

2000, decreasing to 2.53 bn Euros yr⁻¹ in the year 2020. The total impacts on human health from the past, present and future air pollution levels are given in the Table 4.

4.3 Comparison with results from Clean Air for Europe

In this subsection, we compare results from the EVA model system with overall results from the last baseline report from Clean Air for Europe (CAFE) (Watkiss et al., 2005). The main goal of the CAFE programme, launched in 2001 by the EU Commission, was: “achieving levels of air quality that do not give rise to significant negative impacts on and risks to human health and the environment”. The analysis by Watkiss et al. (2005) includes estimates of air pollution concentrations from the EMEP model (European Monitoring and Evaluation Programme) coupled with impact assessment from the RAINS model, including human health, environmental impacts, and external costs. The report includes an assessment of the impacts on human health and the environment from the total air pollution levels in the years 2000 and 2020 – these results are therefore a good basis for comparison with results in this work. Clearly, air pollution concentrations predicted for hypothetical scenarios cannot be validated against real measurement data. While it is possible to test the individual parts of the EVA system (e.g., comparing estimated concentrations from DEHM with observations, validating exposure-response functions and economic valuations), it is difficult to validate the system as a whole, except by comparing EVA estimates with results of similar studies.

These comparisons constitute the closest we can come to an overall evaluation of the whole integrated EVA model system. If the results for health impacts and external costs are similar for the total air pollution levels, then we can have greater confidence in the results from the scenarios, yet we emphasise that the two results being compared are both subject to significant uncertainties and different assumptions. The same kind of comparison does not apply for the scenarios, since scenarios in the CAFE results are based on linear assumptions from predefined source-receptor relationships, while the EVA system takes into account the full non-linear atmospheric chemistry. Therefore any

Health-cost externalities of air pollution in Europe

J. Brandt et al.

Title Page

Abstract

Introduction

Conclusions

References

Tables

Figures



Back

Close

Full Screen / Esc

Printer-friendly Version

Interactive Discussion



difference in the scenario results could arise from the linear vs. non-linear approach. The linear assumptions of atmospheric chemistry do not apply for the total air pollution levels in the CAFE calculations, since these are based on pure model results from a chemistry transport model.

5 In the results presented in this paper, we have assessed the total impacts on human health (see Table 4) and the corresponding external costs (see Table 6) from the total air pollution levels, including all anthropogenic and natural sources for the Northern Hemisphere for four different years (2000, 2007, 2011, and 2020). The scenario is denoted All/all in the tables, meaning that all regions and all emissions for the whole
10 model domain are included. These results are directly comparable with the results in Watkiss et al. (2005). In the following, a direct comparison is made for some of the key parameters in the study. We will denote the results provided in Watkiss et al. (2005) as “CAFE” and the results in this report as “EVA”.

The YOLL (Years Of Life Lost) is a key parameter for the overall mortality. The comparable numbers in CAFE and EVA are as follows: in the CAFE study the result was: “Annual impacts across the EU 25 total an estimated 3.7 million years of life lost each year (based on the year 2000). This can also be expressed as 348 000 estimated premature deaths”. EVA estimates 7.2 million chronic YOLL and 680 000 estimated premature deaths, based on the year 2000 in the European model domain. The estimate
20 from the EVA system is twice the estimate from the CAFE study, however, the CAFE results apply for the EU25 countries and the EVA results are valid for the whole of Europe, including approximately twice as many people, (app. 450 mio people in EU25 and a total of 850 mio people in the European model domain) thus partially accounting for the difference between the two estimates.

25 For the impacts of hospital admissions, the two studies provide the following results: CAFE: “the morbidity effects of PM is estimated to around 100 000 cases of respiratory or cardiac hospital admissions”. EVA: 38 000 respiratory hospital admissions + 81 000 cerebrovascular hospital admissions giving a total of around 119 000 cases for the year 2000 for the European model domain. For the impacts of restricted activity days: CAFE:

Health-cost externalities of air pollution in Europe

J. Brandt et al.

Title Page

Abstract

Introduction

Conclusions

References

Tables

Figures



Back

Close

Full Screen / Esc

Printer-friendly Version

Interactive Discussion



“several hundred million restricted activity days each year”. EVA: 647 mio restricted activity days (European model domain).

For the total external costs, the comparable figures from the two studies are: CAFE: core estimates of annual health impacts due to air pollution in 2000 and in 2020 in EU25 is 790 bn Euro and 609 bn Euros, respectively (using the “value of a statistical life” mean). EVA: total external cost in 2000 (European domain) is 803 bn Euro and 537 bn Euros for the year 2020 using the YOLL approach. The total external costs are very similar for the two studies for the two years, however since the European domain in DEHM covers nearly twice as many people, the EVA results for the EU25 countries are therefore lower than the CAFE results.

In the year 2000, the Gross Domestic Product (GDP) of the EU25 countries was 8947 bn Euros (Watkiss et al., 2005), so the total external costs related to impacts on human health constitute a significant fraction of the GDP. The total external cost in Denmark according to EVA is 4.54 bn Euros (34 bn DKK) for the year 2000, which corresponds to approximately 2% of the Danish GDP. The total external cost due to the total air pollution levels for Denmark is expected to decrease to 2.53 bn Euros in the year 2020 (see Table 3). The corresponding figure for the year 2000 in the CAFE study is 7.3 bn Euros. Compared to our results of 4.54 bn Euros for the same year, we can conclude that our results are conservative.

Another parameter of interest is the number of premature deaths in Denmark. Using the EVA system, we calculate 42 700 chronic YOLL for the year 2000 for Denmark. If we convert this to premature deaths (dividing by a factor of 10.6, as suggested by the CAFE report), we get approximately 4000 premature deaths per year in Denmark, which is very similar to other Danish estimates (e.g. Raaschou-Nielsen et al., 2002). For the years 2007 and 2020, the corresponding figures are 3400 and 2200 for Denmark, showing an expected decrease in the year 2020 to nearly half the number in the year 2000.

In general, we can conclude that the comparable figures presented here from the CAFE study and the EVA results are quite similar, especially if we take into account

Health-cost externalities of air pollution in Europe

J. Brandt et al.

Title Page

Abstract

Introduction

Conclusions

References

Tables

Figures

◀

▶

◀

▶

Back

Close

Full Screen / Esc

Printer-friendly Version

Interactive Discussion



that we compare the EU25 countries (CAFE) with the whole European model domain 2 (EVA), which also includes parts of Russia, Ukraine, Belarus, Turkey, etc. We conclude that the results provided by the EVA model system are in satisfactory agreement with results previously published in the literature.

5 However, we emphasise that comparing the overall results for the general air pollution levels does not mean that the results for the different scenarios are similar. This relates to key differences between the EVA and RAINS systems: when handling scenarios, RAINS applies linearized approximations to the source-receptor relationships. EVA simulates the actual scenarios every time taking into account the non-linear effects
10 of atmospheric chemistry (see e.g. Bastrup-Birk et al., 1997) and using our tagging method, reducing the noise/signal ratio in the δ functions. A study of the contributions from the individual SNAP emission categories in Europe is given in Brandt et al. (2013).

5 Overall conclusions

15 In this paper we have presented a new integrated model system, EVA, based on the impact pathway approach and customised for European conditions. The system is capable of calculating the health-related external costs from specific emission sources and sectors. The system represents an attempt to apply state-of-the-art science, models, data, and methodologies in every link of the impact pathway chain. Furthermore, we have implemented a tagging method, where the problem with noise-to-signal ratio
20 has been reduced in the calculation of the source contributions (the δ -functions).

The EVA system has been run for different scenarios, assessing the human health impacts and associated external costs from international ship traffic as well as the total concentration levels for four different years (2000, 2007, 2011, and 2020). The results have been contrasted with comparable figures from the Clean Air For Europe (CAFE)
25 project, and we have concluded that the results from the two systems are in satisfactory agreement.

Health-cost externalities of air pollution in Europe

J. Brandt et al.

Title Page

Abstract

Introduction

Conclusions

References

Tables

Figures



Back

Close

Full Screen / Esc

Printer-friendly Version

Interactive Discussion



Health-cost externalities of air pollution in Europe

J. Brandt et al.

Title Page

Abstract

Introduction

Conclusions

References

Tables

Figures



Back

Close

Full Screen / Esc

Printer-friendly Version

Interactive Discussion



International ship traffic constitutes a major problem in relation to impacts on human health. We estimate that the total external costs in Europe will increase from 58.4 bn Euros yr⁻¹ in the year 2000 to 64.1 bn Euros yr⁻¹ in the year 2020, due to an expected general increase in the ship traffic worldwide. If we examine the relative external costs from all international ship traffic, it is responsible for an estimated 7 % of the total health effects in Europe due to air pollution in the year 2000, increasing to 12 % in the year 2020.

According to our results, the total health-related external costs from international ship traffic in the Baltic Sea and the North Sea is 22.0 bn Euros yr⁻¹ for the year 2000, decreasing to 14.1 bn Euros yr⁻¹ for the year 2020 – a decrease of 36 %. For Denmark alone, the impacts from international ship traffic in the Baltic Sea and the North Sea result in external costs of an estimated 627 million Euros yr⁻¹ for the year 2000, falling to an estimated 357 million Euros yr⁻¹ for the year 2020 – a decrease of 43 %. From this we conclude that the regulatory efforts of reducing sulphur emissions in the SECA area are expected to significantly reduce the health-related external costs of international shipping. However, the problem of impacts from ship emissions in this area remains significant, due to NO_x emissions, which lead to the formation of nitrate particles (NO₃⁻). In fact, if we examine the relative external costs in Denmark from international ship traffic in the Baltic Sea and the North Sea, with respect to the total external costs from all emission sources, it is expected to remain nearly constant at roughly 14 % over the years from the year 2000 to the year 2020, due to the similar decrease in the total air pollution levels. From this we can also conclude that the relative contribution from the international ship traffic is of comparable size with the contributions from road traffic or the use of domestic wood stoves in Denmark (see Brandt et al., 2013).

For Denmark, the external costs related to all international ship traffic are expected to decrease from 805 million Euros yr⁻¹ in the year 2000 to 484 million Euros yr⁻¹ in the year 2020. This is a direct result of the introduction of the SECA area, where the sulphur content in the heavy fuel is reduced from 2.7 % in the year 2000 to 0.1 % in the year 2015. The relative health-related external costs in Denmark from international

Health-cost externalities of air pollution in Europe

J. Brandt et al.

Title Page

Abstract

Introduction

Conclusions

References

Tables

Figures

◀

▶

◀

▶

Back

Close

Full Screen / Esc

Printer-friendly Version

Interactive Discussion



ship traffic are estimated to be 18 % in the year 2000 and 19 % in the year 2020, even though the total external costs are decreasing, due to a general decrease in air pollution levels. Introducing regulatory instruments for all international ship traffic similar to the ones introduced with the SECA area would have a significant positive impact on human health in Europe.

The total health-related external costs in Europe due to the total air pollution levels from all emission sources in the Northern Hemisphere are calculated to be 803 bn Euros yr⁻¹ for the year 2000 decreasing to 537 bn Euros yr⁻¹ in the year 2020. The decrease is due to the general emission reductions in Europe provided that the NEC-II is implemented as a directive and given the regulation of international ship traffic by introducing SECA in the North Sea and Baltic Sea. The results from the EVA system have been proven consistent with the results from the CAFE study, which have been used to support the decision making in the EU Commission. For Denmark the external costs are estimated to be 4.54 bn Euros yr⁻¹ for the year 2000, decreasing to 2.53 bn Euros yr⁻¹ in the year 2020.

The results in this study show that air pollution still constitutes a serious problem to human health and that the related external costs are considerable. In this work, we defined three overall questions that illustrate the capability of the EVA system to give useful input for the planning and prioritisation of regulation policies and instruments.

Acknowledgement. The present study is a part of the research of the “Center for Energy, Environment and Health (CEEH)”, financed by The Danish Strategic Research Program on Sustainable Energy under contract no 2104-06-0027. Homepage: www.ceeh.dk.

References

Alcamo, J., Amann, M., Hettelingh, J.-P., Holmberg, M., Hordijk, L., Kämäri, J., Kauppi, L., Kauppi, P., Kornai, G., and Mäkelä, A.: Acidification in Europe: a simulation model for evaluating control strategies, *Ambio*, 16, 232–245, 1987.

Health-cost externalities of air pollution in Europe

J. Brandt et al.

Title Page

Abstract

Introduction

Conclusions

References

Tables

Figures

◀

▶

◀

▶

Back

Close

Full Screen / Esc

Printer-friendly Version

Interactive Discussion



- Alcamo, J., Shaw, R., and Hordijk, L. (eds.): The RAINS Model of Acidification, Science and Strategies in Europe, Kluwer Academic Publishers, Dordrecht, Netherlands, 1990.
- Amann, M., Bertok, I., Cabala, R., Cofala, J., Heyes, C., Gyarfás, F., Klimont, Z., Schöpp, W., and Wagner, F.: A final set of scenarios for the Clean Air For Europe (CAFE) programme, June 2005, International Institute for Applied Systems Analysis (IIASA) CAFE Scenario Analysis Report Nr. 6, available at: http://www.iiasa.ac.at/rains/CAFE_files/CAFE-D3.pdf (last access: February 2013), 2005.
- Andersen, M. S., Frohn, L. M., Nielsen, J. S., Nielsen, M., Jensen, J. B., Jensen, S. S., Christensen, J., and Brandt, J.: EVA – a non-linear, Eulerian approach for assessment of health-cost externalities of air pollution, in: Biennial Conference of the International Society for Ecological Economics, New Delhi, December 2006.
- Andersen, M. S., Frohn, L. M., Brandt, J., and Jensen, S. S.: External effects from power production and the treatment of wind energy (and other renewables) in the Danish energy taxation system, in: Critical Issues in Environmental Taxation: International and Comparative Perspectives Volume IV, edited by: Deketelaere, K., Milne, J. E., Kreiser, L. A., and Ashiabor, H., Oxford University Press, Oxford, 319–336, 2007.
- Andersen, M. S., Frohn, L. M., Nielsen, J. S., Nielsen, M., Jensen, S. S., Christensen, J. H., and Brandt, J.: A non-linear eulerian approach for assessment of health-cost externalities of air pollution, in: Proceedings of the European Association of Environmental and Resource Economists 16th Annual Conference, Gothenburg, Sverige, 25–28 June 2008, 23 pp.
- Bastrup-Birk, A., Brandt, J., Zlatev, Z., and Uria, I.: Studying cumulative ozone exposures in Europe during a 7-year period, *J. Geophys. Res.*, 102, 23917–23935, 1997.
- Brandt, J., Christensen, J. H., Frohn, L. M., Palmgren, F., Berkowicz, R., and Zlatev, Z.: Operational air pollution forecasts from European to local scale, *Atmos. Environ.*, 35, S91–S98, 2001a.
- Brandt, J., Christensen, J. H., Frohn, L. M., and Berkowicz, R.: Operational air pollution forecast from regional scale to urban street scale. Part 1: system description, *Phys. Chem. Earth B*, 26, 781–786, 2001b.
- Brandt, J., Christensen, J. H., and Frohn, L. M.: Operational air pollution forecast from regional scale to urban street scale. Part 2: performance evaluation, *Phys. Chem. Earth B*, 26, 825–830, 2001c.

Health-cost externalities of air pollution in Europe

J. Brandt et al.

Title Page

Abstract

Introduction

Conclusions

References

Tables

Figures

◀

▶

◀

▶

Back

Close

Full Screen / Esc

Printer-friendly Version

Interactive Discussion



Brandt, J., Christensen, J. H., Frohn, L. M., and Berkowicz, R.: Air pollution forecasting from regional to urban street scale – implementation and validation for two cities in Denmark, *Phys. Chem. Earth*, 28, 335–344, 2003.

Brandt, J., Christensen, J. H., Frohn, L. M., Geels, C., Hansen, K. M., Hedegaard, G. B., Hvidberg, M., and Skjøth, C. A.: THOR – an operational and integrated model system for air pollution forecasting and management from regional to local scale, *Proceedings of the 2nd ACCENT Symposium, Urbino (Italy), 23–27 July 2007*.

Brandt, J., Christensen, J. H., Frohn, L. M., Geels, C., Hansen, K. M., Hedegaard, G. B., Hvid, T., Hvidberg, M., and Skjøth, C. A.: THOR – an operational and integrated model system for air pollution forecasting and management from regional to local scale, *Proceedings from 7th International Conference on Air Quality – Science and Application (Air Quality 2009), Istanbul, 24–27 March 2009*.

Brandt, J., Silver, J. D., Christensen, J. H., Andersen, M. S., Geels, C., Gross, A., Hansen, A. B., Hansen, K. M., Hedegaard, G. B., and Skjøth, C. A.: Assessment of health-cost externalities of air pollution at the national level using the EVA model system, in: *Proceedings from the International Conference on Energy, Environment and Health – Optimisation of Future Energy Systems, 31 May–2 June 2010, Carlsberg Academy, Valby, Denmark, 5 pp., 2010*.

Brandt, J., Silver, J. D., Frohn, L. M., Geels, C., Gross, A., Hansen, A. B., Hansen, K. M., Hedegaard, G. B., Skjøth, C. A., Villadsen, H., Zare, A., and Christensen, J. H.: An integrated model study for Europe and North America using the Danish Eulerian Hemispheric Model with focus on intercontinental transport, *Atmos. Environ.*, 53, 156–176, doi:10.1016/j.atmosenv.2012.01.011, 2012.

Brandt, J., Silver, J. D., Christensen, J. H., Andersen, M. S., Bønløkke, J., Sigsgaard, T., Geels, C., Gross, A., Hansen, A. B., Hansen, K. M., Contribution from the ten major emission sectors in Europe and Denmark to the health-cost externalities of air pollution using the EVA model system – an integrated modelling approach, *Atmos. Chem. Phys. Discuss.*, 13, 5871–5922, doi:10.5194/acpd-13-5871-2013, 2013.

Christensen, J. H.: The Danish Eulerian Hemispheric Model – a three-dimensional air pollution model used for the Arctic, *Atm. Env.*, 31, 4169–4191, 1997.

Christensen, J. H., Brandt, J., Frohn, L. M., and Skov, H.: Modelling of Mercury in the Arctic with the Danish Eulerian Hemispheric Model, *Atmos. Chem. Phys.*, 4, 2251–2257, doi:10.5194/acp-4-2251-2004, 2004.

Corbett, J. J. and Fischbeck, P. S.: Emissions from ships, *Science*, 278, 823–824, 1997.

Health-cost externalities of air pollution in Europe

J. Brandt et al.

Title Page

Abstract

Introduction

Conclusions

References

Tables

Figures

◀

▶

◀

▶

Back

Close

Full Screen / Esc

Printer-friendly Version

Interactive Discussion



- ExternE: National Implementation. Germany, Contract JOS3-CT95-0010, Contract JOU2-CT-0264, Final Report prepared by IER, IER, University of Stuttgart, Germany, November, 1997.
- ExternE: DGXII (JOULE Programme), Externalities of Energy, External project, Report Number 7, in: Methodology, updated 1998, edited by: Holland, M. R. and Foster, D., available at: www.externe.info (last access: February 2013), 1999.
- ExternE: ExternE – Externalities of Energy: Vol. 7, Methodology 1998 update, European Commission, Brussels, 1999.
- ExternE: Externalities of Energy Methodology 2005 update. European Commission, Directorate-General for Research Sustainable Energy Systems. Brussels, 2005.
- Friedrich, R. and Bickel, P.: Environmental External Costs of Transport, Springer, München, 2001.
- Frohn, L. M., Christensen, J. H., Brandt, J., and Hertel, O.: Development of a high resolution nested air pollution model for studying air pollution in Denmark, *Phys. Chem. Earth*, 26, 769–774, 2001.
- Frohn, L. M., Christensen, J. H., and Brandt, J.: Development of a high resolution nested air pollution model – the numerical approach, *J. Comput. Phys.*, 179, 68–94, 2002.
- Frohn, L. M., Brandt, J., Hertel, O., Christensen, J. H., Geels, C., Andersen, M. S., Nielsen, J. S., Frydendall, J., Hvidberg, M., Jensen, S. S., Petersen, J., and Madsen, P. V.: Assessment of air pollution related damages on human health – and the subsequent costs, in: Proceedings from the 3rd GLOREAM/EURASAP Workshop, Modern developments in modelling and chemical data analysis, The Netherlands, September 2005, 8 pp., 2006.
- Frohn, L. M., Andersen, M. S., Geels, C., Brandt, J., Christensen, J. H., Hansen, K. M., Nielsen, J. S., Hertel, O., Skjøth, C. A., and Madsen, P. V.: “EVA – an integrated model system for assessing external costs related to air pollution emissions. A contribution to ACCENT T&TP”, in: Proceedings from the 2nd ACCENT Symposium, available at: www.accent-network.org (last access: February 2013), 10 pp., 2007.
- Hänninen, O., Knol, A. (eds.), Jantunen, M., Kollanus, V., Leino, O., Happonen, E., Lim, T.-A., Conrad, A., Rappolder, M., Carrer, P., Fanetti, A.-C., Kim, R., Prüss-Üstün, A., Buekers, J., Torfs, R., Iavarone, I., Comba, P., Classen, T., Hornberg, C., and Mekel, O.: European perspectives on Environmental Burden of Disease: Estimates for Nine Stressors in Six Countries, *THL Reports 1/2011*, Helsinki, Finland. 86 pp + 2 appendixes, ISBN 978-952-245-413-3, available at: <http://en.opasnet.org/w/Ebode>, 2011.

Health-cost externalities of air pollution in Europe

J. Brandt et al.

Title Page

Abstract

Introduction

Conclusions

References

Tables

Figures

◀

▶

◀

▶

Back

Close

Full Screen / Esc

Printer-friendly Version

Interactive Discussion



Jensen, G. and Leetz, A.: Acting now for better health: a 30 % target for EU climate policy, pp. 40, available at: http://www.env-health.org/IMG/pdf/HEAL_30_co-benefits_report_-_FULL.pdf (last access: February 2013), 2010.

5 Klaassen, G., Amann, M., Berglund, C., Cofala, J., Höglund-Isaksson, L., Heyes, C., Mechler, R., Tohka, A., Schöpp, W., and Winiwarter, W.: The extension of the RAINS model to greenhouse gases. Technical Report IR-04-015, International Institute for Applied Systems Analysis, Laxenburg, Austria, 2004.

10 Pfister, G. G., Emmons, L. K., Hess, P. G., Lamarque, J.-F., Orlando, J. J., Walters, S., Guenther, A., Palmer, P. I., and Lawrence, P. J.: Contribution of isoprene to chemical budgets: a model tracer study with the NCAR CTM MOZART-4, *J. Geophys. Res.*, 113, D05308, doi:10.1029/2007JD008948, 2008.

Raaschou-Nielsen, O., Palmgren, F., Jensen, S. S., Wåhlin, P., Berkowicz, R., Hertel, O., Vrang, M.-L., and Loft, S. H.: Helbredseffekter af partikulær luftforurening i Danmark – et forsøg på kvantificering, *Ugeskrift for Læger*, 164, 3959, 2002.

15 Simpson, D., Benedictow, A., Berge, H., Bergström, R., Emberson, L. D., Fagerli, H., Flechard, C. R., Hayman, G. D., Gauss, M., Jonson, J. E., Jenkin, M. E., Nyíri, A., Richter, C., Semeena, V. S., Tsyro, S., Tuovinen, J.-P., Valdebenito, Á., and Wind, P.: The EMEP MSC-W chemical transport model – technical description, *Atmos. Chem. Phys.*, 12, 7825–7865, doi:10.5194/acp-12-7825-2012, 2012.

20 Sudo, K. and Akimoto, H.: Global source attribution of tropospheric ozone: long-range transport from various source regions, *J. Geophys. Res.*, 112, D12302, doi:10.1029/2006JD007992, 2007.

US-EPA, 2009: Proposal of Emission Control Area Designation for Geographic Control of Emissions from Ships. United States Environmental Protection Agency, Office of Transportation and Air Quality EPA-420-F-09-015, 8 pp., Washington, USA, December, 2009.

25 Watkiss, P., Pye, S., and Holland, M.: CAFE CBA: Baseline Analysis 2000 to 2020. Service Contract for Carrying out Cost-Benefit Analysis of Air Quality Related Issues, in particular in the clean Air for Europe (CAFE) Programme, April 2005, available at: http://www.cafe-cba.org/assets/baseline_analysis_2000-2020_05-05.pdf (last access: February 2013), 2005.

Table 1. Definition of the specific scenarios (or “tags” in the model). Each scenario is defined by a region and a SNAP category (first column), an emission year (second column), a short description of the emissions of interest in the scenario (column 3).

Region/ SNAP	Emission year	Emission scenario (or the “tag”)
All/15	2000	Int. ship traffic for the year 2000, (S = 2.7 %)*, whole model domain (EMEP = 2000)
All/15	2007	Int. ship traffic for the year 2007, NS/BS: S = 1.5 %*, whole domain (EMEP = 2006)
All/15	2011	Int. ship traffic for the year 2011, NS/BS: S = 1.0 %*, whole domain (EMEP = 2006)
All/15	2020	Int. ship traffic for the year 2020, NS/BS: S = 0.1 %*, whole model domain, (NEC-II)
BaS-NoS/15	2000	Int. ship traffic for the year 2000, (S = 2.7 %)*, whole model domain (EMEP = 2000)
BaS-NoS/15	2007	Int. ship traffic for the year 2007, NS/BS: S = 1.5 %*, whole domain (EMEP = 2006)
BaS-NoS/15	2011	Int. ship traffic for the year 2011, NS/BS: S = 1.0 %*, whole domain (EMEP = 2006)
BaS-NoS/15	2020	Int. ship traffic for the year 2020, NS/BS: S = 0.1 %*, whole model domain, (NEC-II)
All/all	2000	All emissions (anthropogenic; GEIA/EDGAR; EMEP 2000 + natural; international ship traffic as All/15 for the year 2000)
All/all	2007	All emissions (anthropogenic; GEIA/EDGAR; EMEP 2006 + natural international ship traffic as All/15 for the year 2007)
All/all	2011	All emissions (anthropogenic; GEIA/EDGAR, EMEP 2006 + natural international ship traffic as All/15 for the year 2011)
All/all	2020	All emissions (anthropogenic; GEIA/EDGAR; NEC-II + natural international ship traffic as All/15 for the year 2020)

* The North Sea (NoS) and Baltic Sea (BaS) are part of the Sulphur Emission Control Areas (SECA).

Health-cost externalities of air pollution in Europe

J. Brandt et al.

Title Page

Abstract Introduction

Conclusions References

Tables Figures

◀ ▶

◀ ▶

Back Close

Full Screen / Esc

Printer-friendly Version

Interactive Discussion



Health-cost externalities of air pollution in Europe

J. Brandt et al.

Title Page

Abstract

Introduction

Conclusions

References

Tables

Figures

◀

▶

◀

▶

Back

Close

Full Screen / Esc

Printer-friendly Version

Interactive Discussion



Table 2. Total number of cases in Europe of the different impacts related to international ship traffic in the Northern Hemisphere (scenario: All/15) for the four different years.

Health impact Year	Number of cases in Europe			
	2000	2007	2011	2020
Chronic Bronchitis	46 000	44 900	42 800	49 600
Restricted Activity Days	47 000 000	45 900 000	43 700 000	50 700 000
Respiratory Hospital Admissions	2670	2550	2410	2770
Cerebrovascular Hospital Admissions	5900	5760	5490	6360
Congestive Heart Failure	2990	2920	2780	3220
Lung Cancer	7050	6880	6550	7590
Bronchodilator Use Children	1 370 000	1 340 000	1 280 000	1 480 000
Bronchodilator Use Adults	9 010 000	8 790 000	8 370 000	9 710 000
Cough Children	4 750 000	4 630 000	4 410 000	5 120 000
Cough Adults	9 270 000	9 050 000	8 620 000	9 990 000
Lower Respiratory Symptoms Children	1 830 000	1 790 000	1 700 000	1 970 000
Lower Respiratory Symptoms Adults	3 340 000	3 260 000	3 110 000	3 600 000
Acute YOLL	3630	3500	3400	4470
Chronic YOLL	525 000	512 000	488 000	566 000
Infant mortality	52	50	48	56

Health-cost externalities of air pollution in Europe

J. Brandt et al.

Title Page

Abstract

Introduction

Conclusions

References

Tables

Figures

◀

▶

◀

▶

Back

Close

Full Screen / Esc

Printer-friendly Version

Interactive Discussion



Table 3. Total number of cases in Europe of the different impacts related to international ship traffic in the Baltic Sea and the North Sea (scenario: BaS-NoS/15) for the four different years.

Health impact Year	Number of cases in Europe			
	2000	2007	2011	2020
Chronic Bronchitis	18 900	15 100	13 100	12 300
Restricted Activity Days	19 400 000	15 500 000	13 400 000	12 600 000
Respiratory Hospital Admissions	1160	882	746	660
Cerebrovascular Hospital Admissions	2430	1940	1680	1580
Congestive Heart Failure	1250	1000	867	814
Lung Cancer	2900	2320	2000	1880
Bronchodilator Use Children	565 000	451 000	390 000	367 000
Bronchodilator Use Adults	3 710 000	2 960 000	2 560 000	2 410 000
Cough Children	1 950 000	1 560 000	1 350 000	1 270 000
Cough Adults	3 820 000	3 050 000	2 640 000	2 480 000
Lower Respiratory Symptoms Children	753 000	601 000	520 000	489 000
Lower Respiratory Symptoms Adults	1 380 000	1 100 000	951 000	894 000
Acute YOLL	555	240	143	251
Chronic YOLL	216 000	172 000	149 000	140 000
Infant mortality	21	17	15	14

Health-cost externalities of air pollution in Europe

J. Brandt et al.

Title Page

Abstract

Introduction

Conclusions

References

Tables

Figures

◀

▶

◀

▶

Back

Close

Full Screen / Esc

Printer-friendly Version

Interactive Discussion



Table 4. Total number of cases in Europe of the different impacts related to all the emissions in the Northern Hemisphere – i.e. the total air pollution levels (scenario: All/all) for the four different years.

Health impact Year	Number of cases in Europe			
	2000	2007	2011	2020
Chronic Bronchitis	633 000	535 000	532 000	418 000
Restricted Activity Days	647 000 000	547 000 000	544 000 000	427 000 000
Respiratory Hospital Admissions	37 800	31 400	31 200	23 800
Cerebrovascular Hospital Admissions	81 200	68 600	68 200	53 600
Congestive Heart Failure	50 200	42 700	42 500	35 200
Lung Cancer	96 900	81 900	81 400	64 000
Bronchodilator Use Children	18 900 000	16 000 000	15 900 000	12 500 000
Bronchodilator Use Adults	124 000 000	105 000 000	104 000 000	81 800 000
Cough Children	65 300 000	55 200 000	54 900 000	43 100 000
Cough Adults	128 000 000	108 000 000	107 000 000	84 200 000
Lower Respiratory Symptoms Children	25 200 000	21 300 000	21 200 000	16 600 000
Lower Respiratory Symptoms Adults	46 000 000	38 800 000	38 600 000	30 400 000
Acute YOLL	49 800	43 900	43 700	36 200
Chronic YOLL	7 220 000	6 100 000	6 070 000	4 770 000
Infant mortality	710	599	596	468

Health-cost externalities of air pollution in Europe

J. Brandt et al.

Table 5. The total external costs in mio Euros for the whole of Europe per chemical compound for all the different scenarios. Total S is the sum of the external cost of SO_2 and SO_4^{2-} . Total N is the sum of the external costs of O_3 and NO_3^- . The external costs from NH_3 emissions are included in the impacts related to S and N through chemical reactions in the atmosphere.

Region/ SNAP	Emission year	CO [MEuros]	Total S [MEuros]	Total N [MEuros]	PM _{2.5} [MEuros]
All/15	2000	0.775	27 000	25 200	6110
All/15	2007	0.707	23 400	28 500	5000
All/15	2011	0.688	21 000	28 700	4600
All/15	2020	0.849	24 300	35 400	4460
BaS-NoS/15	2000	0.038	11 600	8170	2270
BaS-NoS/15	2007	0.051	5970	10 100	1050
BaS-NoS/15	2011	0.051	3550	10 400	725
BaS-NoS/15	2020	0.022	360	13 200	490
All/all	2000	139	320 000	331 000	151 000
All/all	2007	123	247 000	307 000	128 000
All/all	2011	122	243 000	307 000	128 000
All/all	2020	125	160 000	235 000	142 000

Title Page

Abstract

Introduction

Conclusions

References

Tables

Figures

◀

▶

◀

▶

Back

Close

Full Screen / Esc

Printer-friendly Version

Interactive Discussion



Health-cost externalities of air pollution in Europe

J. Brandt et al.

Table 6. Total health-related externalities for Europe and Denmark for international ship traffic (All/15), for international ship traffic in the Baltic Sea and the North Sea (BaS-NoS/15), and for all emissions in the whole of Europe (All/all) for four different emission years. All costs are in 2006 prices. All external costs are given in bn Euros.

Region/SNAP	Emission year	Sum Europe [bn Euros]	Sum Denmark [bn Euros]
All/15 International ship traffic	2000	58.4	0.805
	2007	56.9	0.623
	2011	54.3	0.558
	2020	64.1	0.484
BaS-NoS/15 International ship traffic in Baltic Sea and North Sea	2000	22.0	0.627
	2007	17.2	0.474
	2011	14.7	0.414
	2020	14.1	0.357
All/all Emissions from the whole model domain, all anthropogenic emission sectors and all natural sources	2000	803	4.54
	2007	682	3.80
	2011	678	3.75
	2020	537	2.53

Title Page

Abstract

Introduction

Conclusions

References

Tables

Figures

◀

▶

◀

▶

Back

Close

Full Screen / Esc

Printer-friendly Version

Interactive Discussion



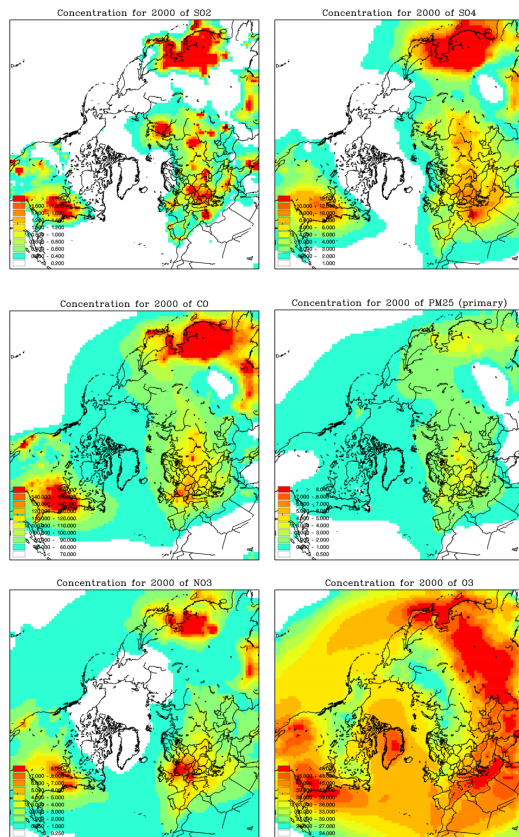


Fig. 1. Mean annual air pollution levels calculated using the DEHM model due to emission from the Northern Hemisphere for the year 2000. The compounds are: SO_2 [ppb], SO_4^{2-} [$\mu\text{g m}^{-3}$], CO [ppm], $\text{PM}_{2.5}$ (primary part) [$\mu\text{g m}^{-3}$], NO_3^- [$\mu\text{g m}^{-3}$] and O_3 [ppb]. Results are shown for the DEHM Northern Hemispheric domain.

Health-cost externalities of air pollution in Europe

J. Brandt et al.

Title Page

Abstract Introduction

Conclusions References

Tables Figures

◀ ▶

◀ ▶

Back Close

Full Screen / Esc

Printer-friendly Version

Interactive Discussion



Health-cost externalities of air pollution in Europe

J. Brandt et al.

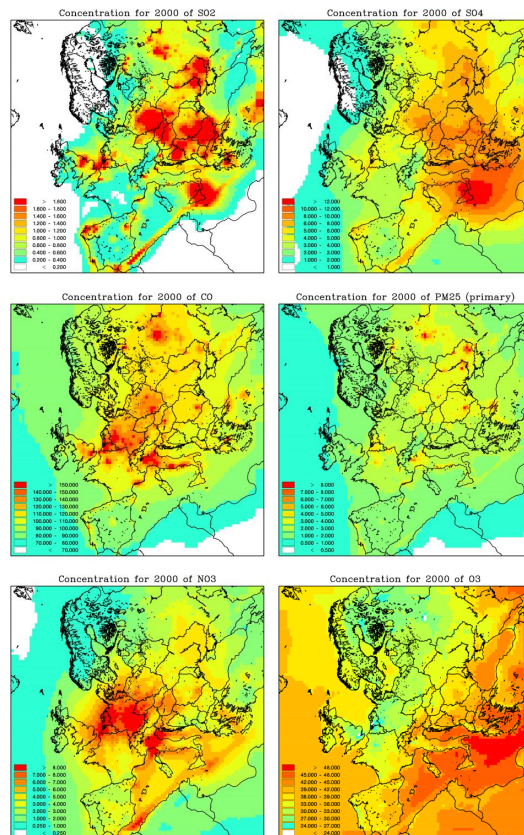


Fig. 2. As Fig. 1, but for DEHM European model domain.

Title Page

Abstract

Introduction

Conclusions

References

Tables

Figures

◀

▶

◀

▶

Back

Close

Full Screen / Esc

Printer-friendly Version

Interactive Discussion



Health-cost externalities of air pollution in Europe

J. Brandt et al.

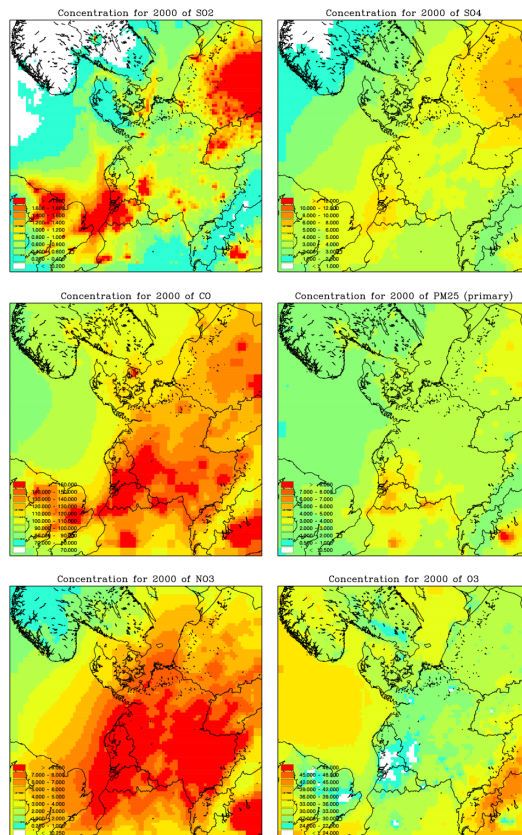


Fig. 3. As Fig. 1, but for DEHM Northern European model domain.

Title Page

Abstract Introduction

Conclusions References

Tables Figures

◀ ▶

◀ ▶

Back Close

Full Screen / Esc

Printer-friendly Version

Interactive Discussion



Health-cost externalities of air pollution in Europe

J. Brandt et al.

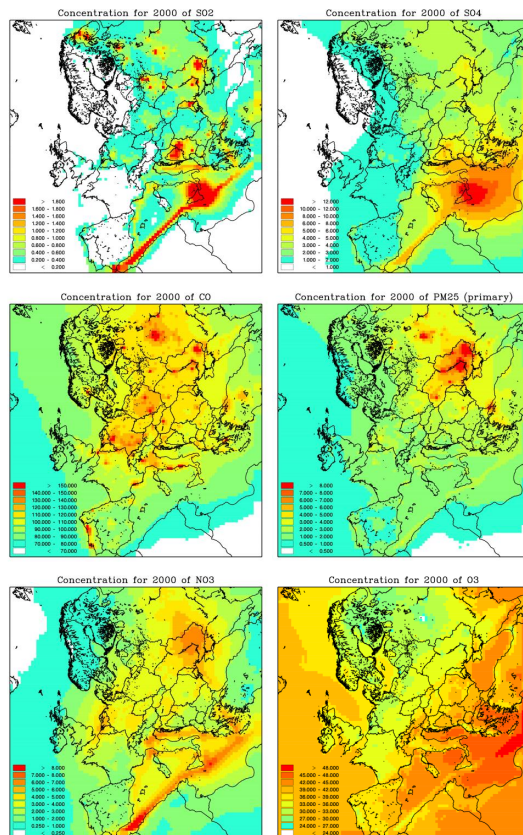


Fig. 4. As Fig. 2, but for the year 2020.

Title Page

Abstract

Introduction

Conclusions

References

Tables

Figures

◀

▶

◀

▶

Back

Close

Full Screen / Esc

Printer-friendly Version

Interactive Discussion



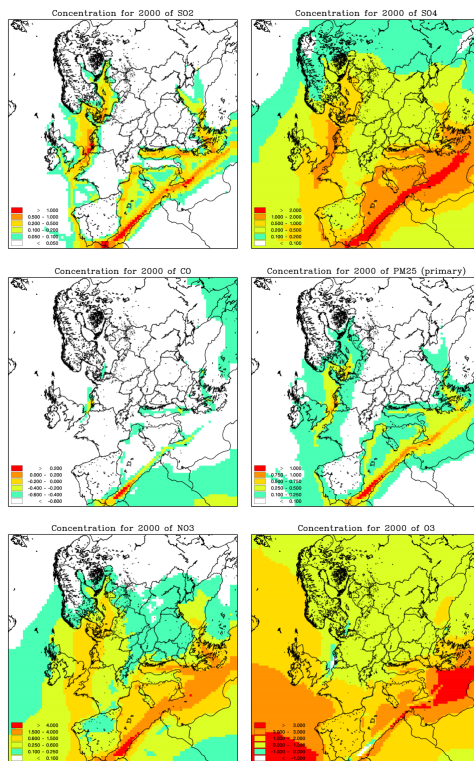


Fig. 5. Contribution to the mean annual air pollution levels (δ -concentrations) calculated using the DEHM model due to emissions from the Northern Hemisphere from international ship traffic for the year 2000. The compounds are: SO₂ [ppb], SO₄²⁻ [$\mu\text{g m}^{-3}$], CO [ppm], PM_{2.5} (primary part) [$\mu\text{g m}^{-3}$], NO₃⁻ [$\mu\text{g m}^{-3}$] and O₃ [ppb]. Results are shown for DEHM domain number 2.

Health-cost externalities of air pollution in Europe

J. Brandt et al.

Title Page

Abstract Introduction

Conclusions References

Tables Figures

◀ ▶

◀ ▶

Back Close

Full Screen / Esc

Printer-friendly Version

Interactive Discussion



Health-cost externalities of air pollution in Europe

J. Brandt et al.

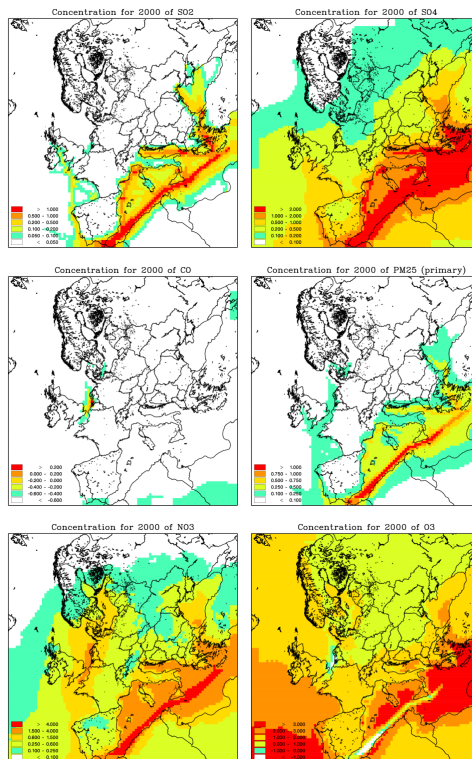


Fig. 6. As Fig. 5, but for the year 2020.

Title Page

Abstract

Introduction

Conclusions

References

Tables

Figures

◀

▶

◀

▶

Back

Close

Full Screen / Esc

Printer-friendly Version

Interactive Discussion



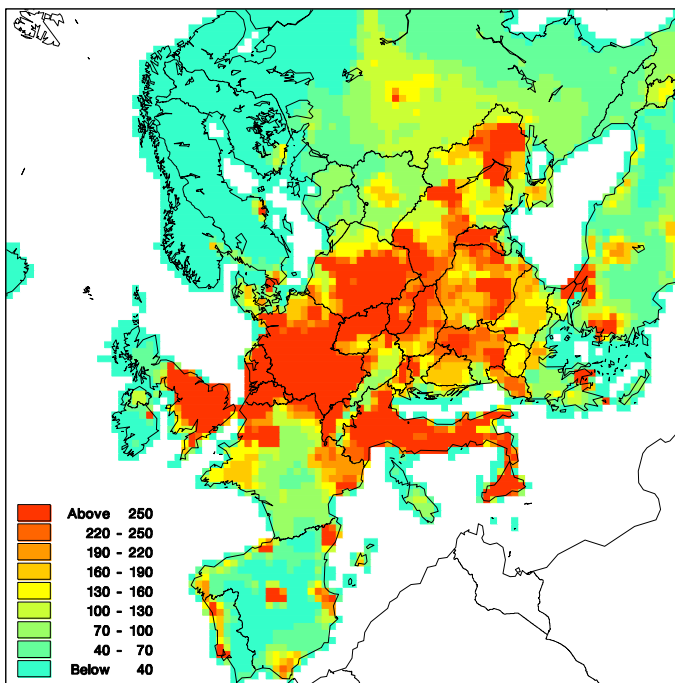


Fig. 7. Number of premature deaths per grid cell in Europe (DEHM European model domain) as calculated with the integrated EVA model system for the year 2000 for the total air pollution levels (scenario All/all). The area of the grid cells are $50\text{ km} \times 50\text{ km} = 2500\text{ km}^2$ so the colours refer to the number of premature deaths per 2500 km^2 . The total number of premature deaths in the whole model domain is 680 000, calculated from the number of chronic YOLL (see Table 6) divided by a factor of 10.6 (as used in the CAFE; Watkiss et al., 2005). High numbers of premature deaths as shown in the figure, require both high levels of annual particle concentrations and high population density. In the year 2020, the number of premature deaths in Europe is estimated to decrease to 450 000.

Health-cost externalities of air pollution in Europe

J. Brandt et al.

Title Page

Abstract Introduction

Conclusions References

Tables Figures

◀ ▶

◀ ▶

Back Close

Full Screen / Esc

Printer-friendly Version

Interactive Discussion

