

## Supplementary figures

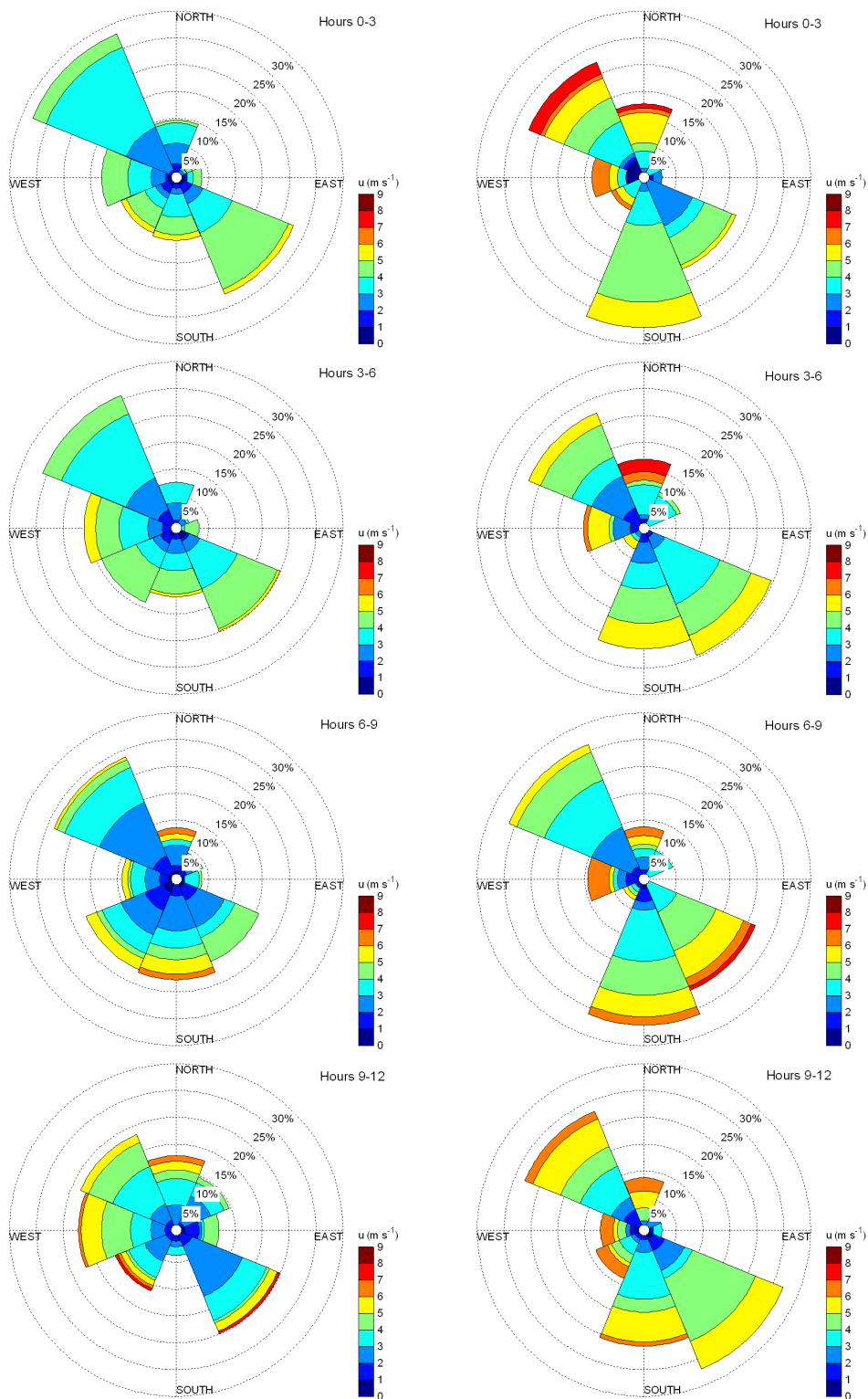


Figure S1. Daily wind roses for (a) August and for (b) November in 4-hourly bins recorded from the UMBS AmeriFlux tower above the canopy at 46 m.

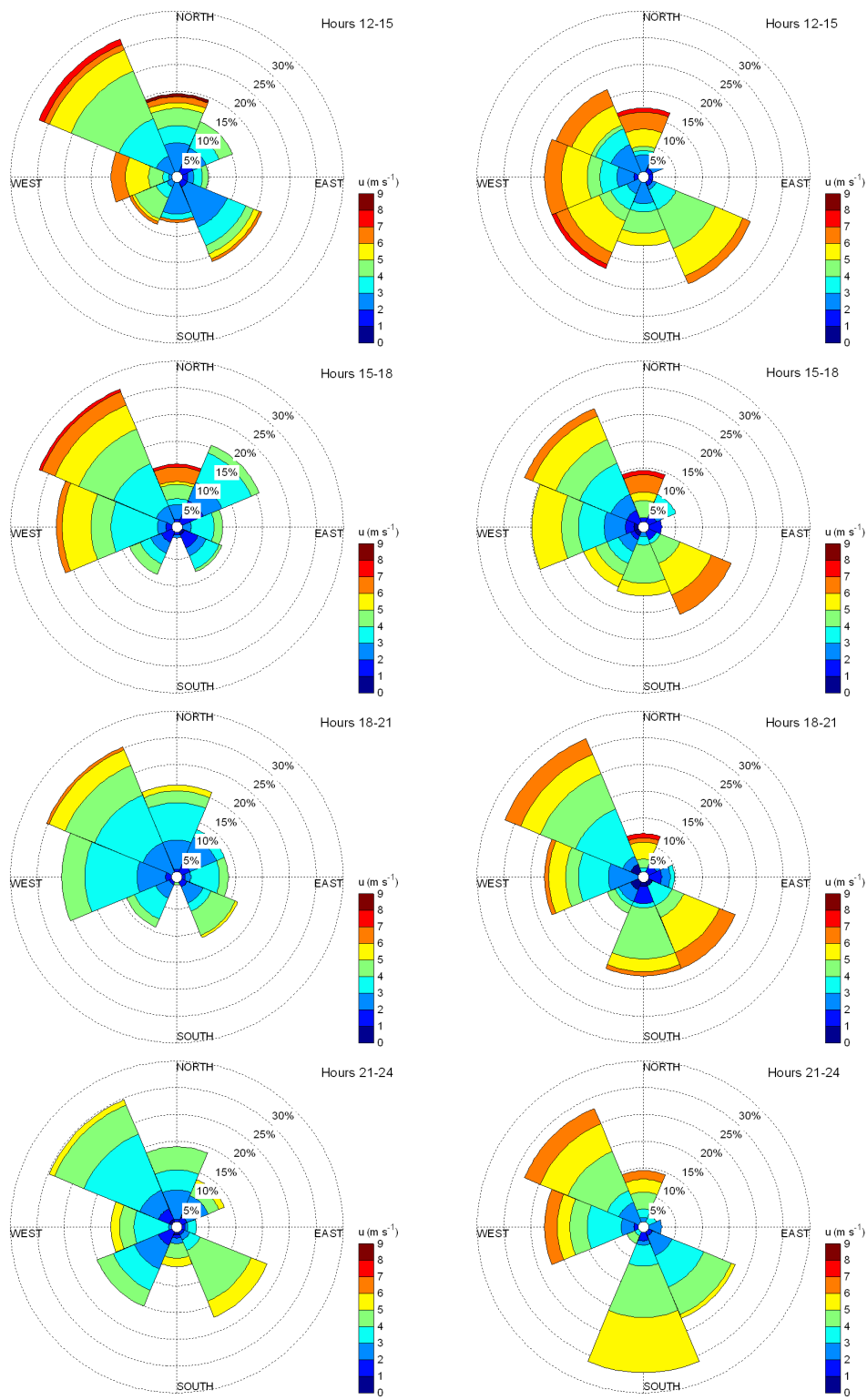


Figure S1 (cont.)

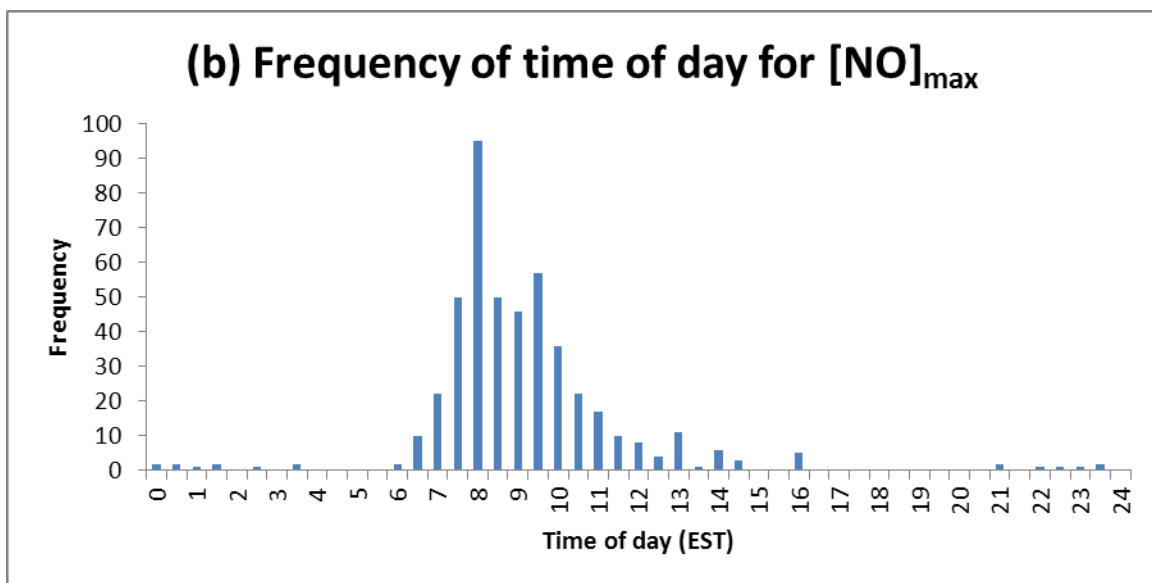
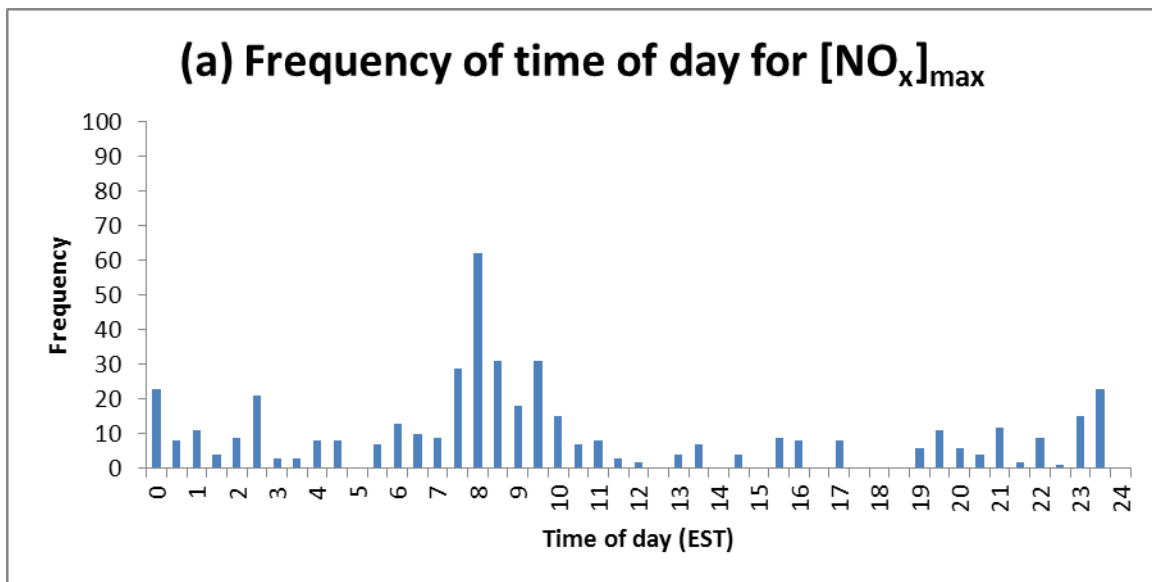


Figure S2. Histogram of frequency of time of day for observed (a)  $\text{NO}_x$  maxima and (b)  $\text{NO}$  maxima for the five-month measurement period (July to November 2008) at UMBS.