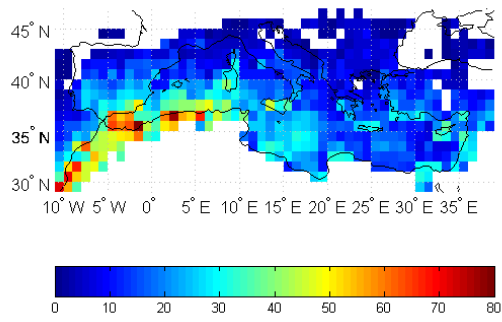


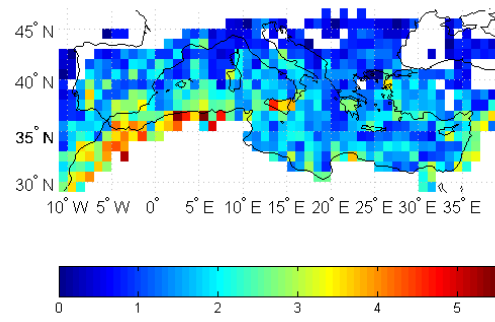
Supplementary Material of paper acp-2013-174:

**The regime of intense desert dust episodes in the
Mediterranean based on contemporary satellite
observations and ground measurements**

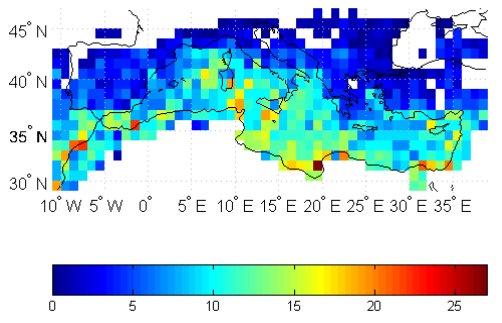
**by A.Gkikas, N. Hatzianastassiou, N. Mihalopoulos, V. Katsoulis, S.
Kazadzis, J. Pey, X. Querol, O. Torres**



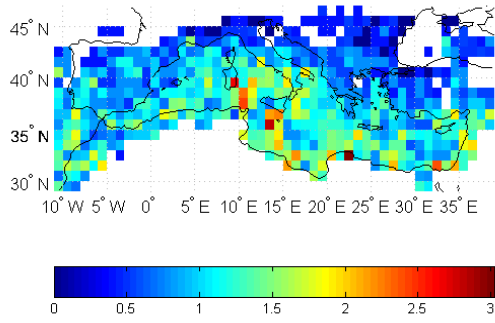
(i-a)



(i-b)



(ii-a)



(ii-b)

Figure S1: Geographical distribution of total number of: (i) strong and (ii) extreme DD episodes over the broader Mediterranean basin for the period 2000-2007 (on the left) and the associated standard deviations (on the right).

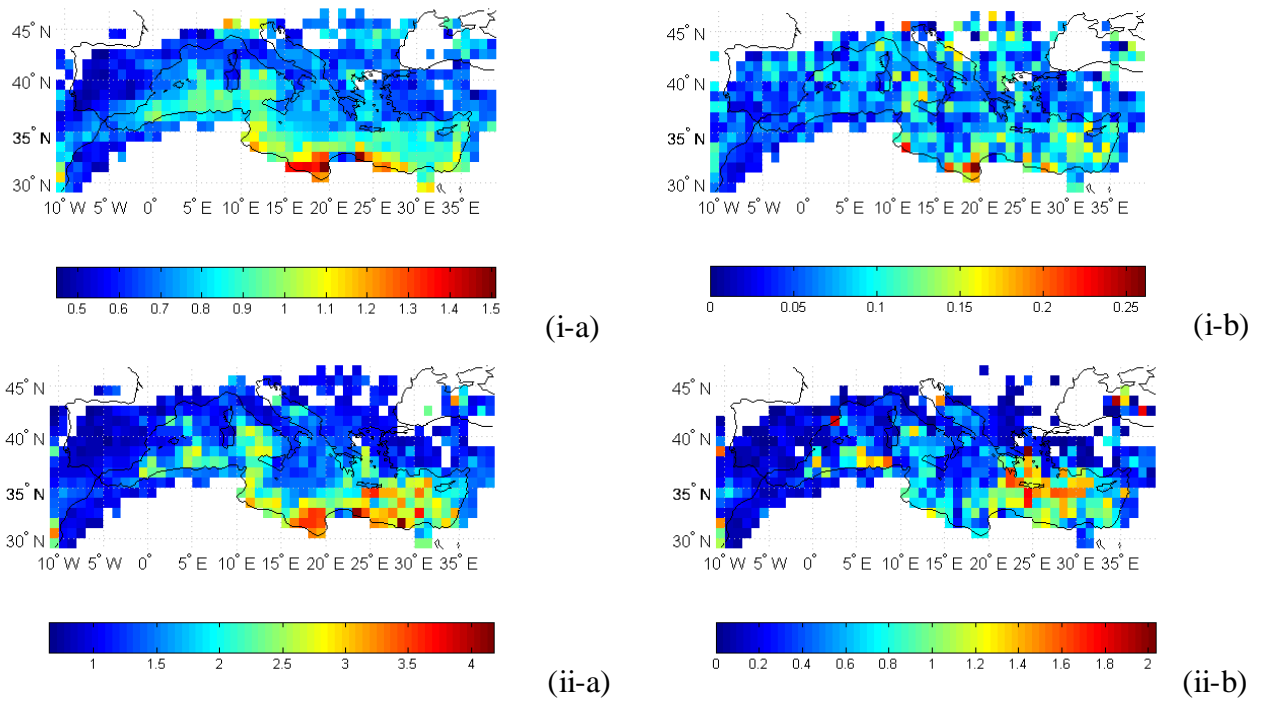
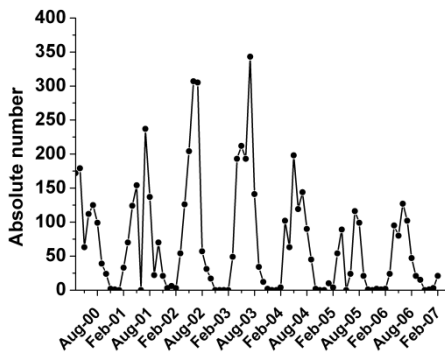
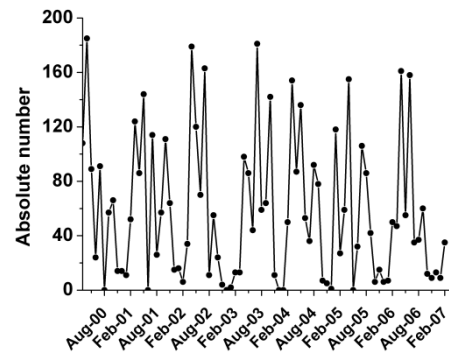


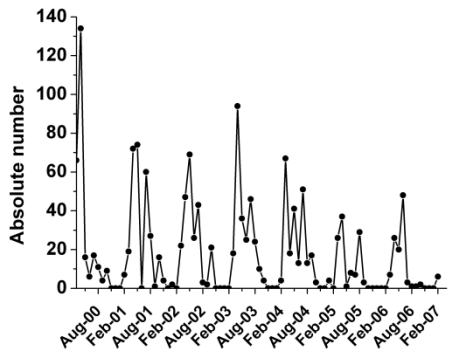
Figure S2: Geographical distribution of the intensity, in terms of AOD_{550nm}, of: (i) strong and (ii) extreme DD episodes over the broader Mediterranean basin for the period 2000-2007 (on the left) and the associated standard deviations (on the right).



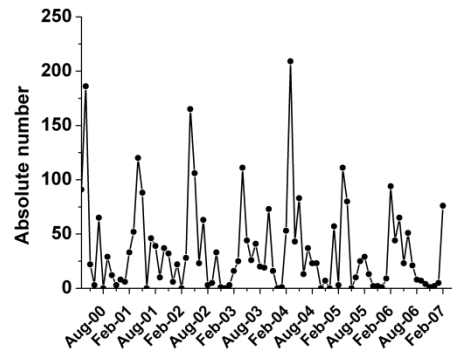
(i-a)



(i-b)

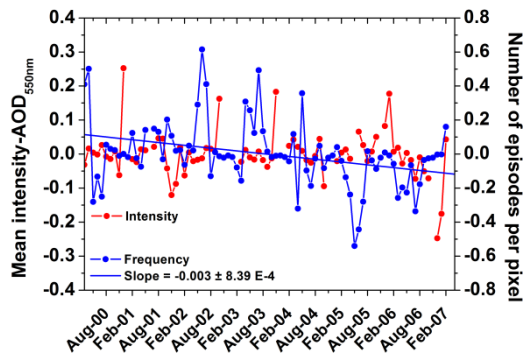


(ii-a)

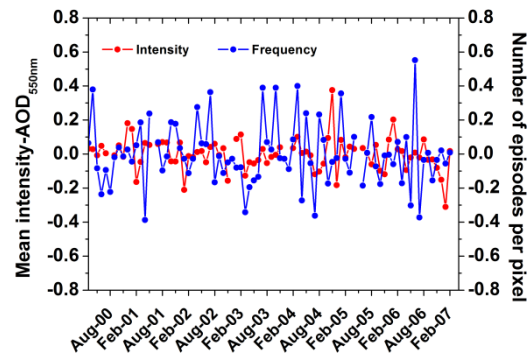


(ii-b)

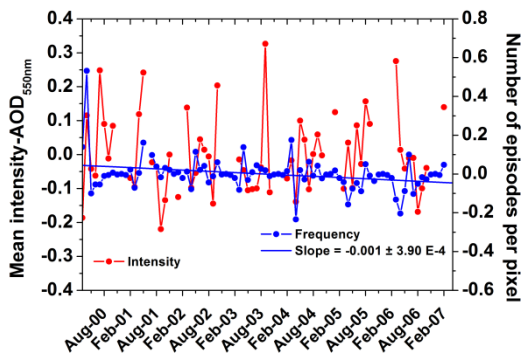
Figure S3: Inter-annual variation of absolute number of: (i) strong and (ii) extreme DD aerosol episodes taking place over: (a) land and (b) sea surfaces of the broader Mediterranean basin for the period 2000-2007.



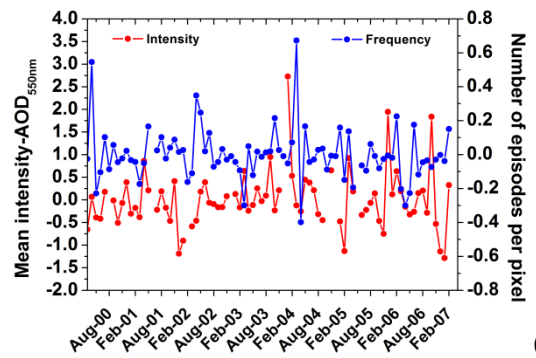
(i-a)



(i-b)



(ii-a)



(ii-b)

Figure S4: Inter-annual variation of monthly anomalies of frequency (blue curves) and intensity (red curves) of: (i) strong and (ii) extreme DD episodes DD aerosol episodes taking place over: (a) land and (b) sea surfaces of the broader Mediterranean basin for the period 2000-2007.