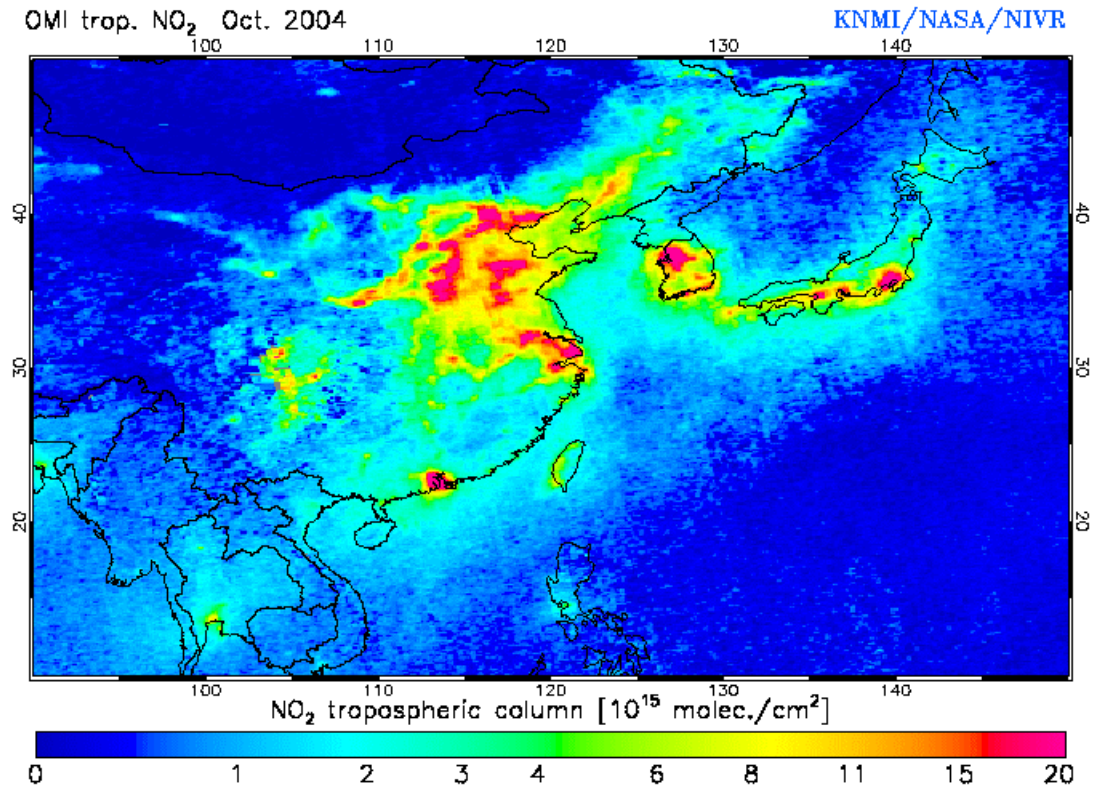


Monthly mean tropospheric NO₂ over Southeast Asia from OMI version 1.0 (2004.10-2007.2)

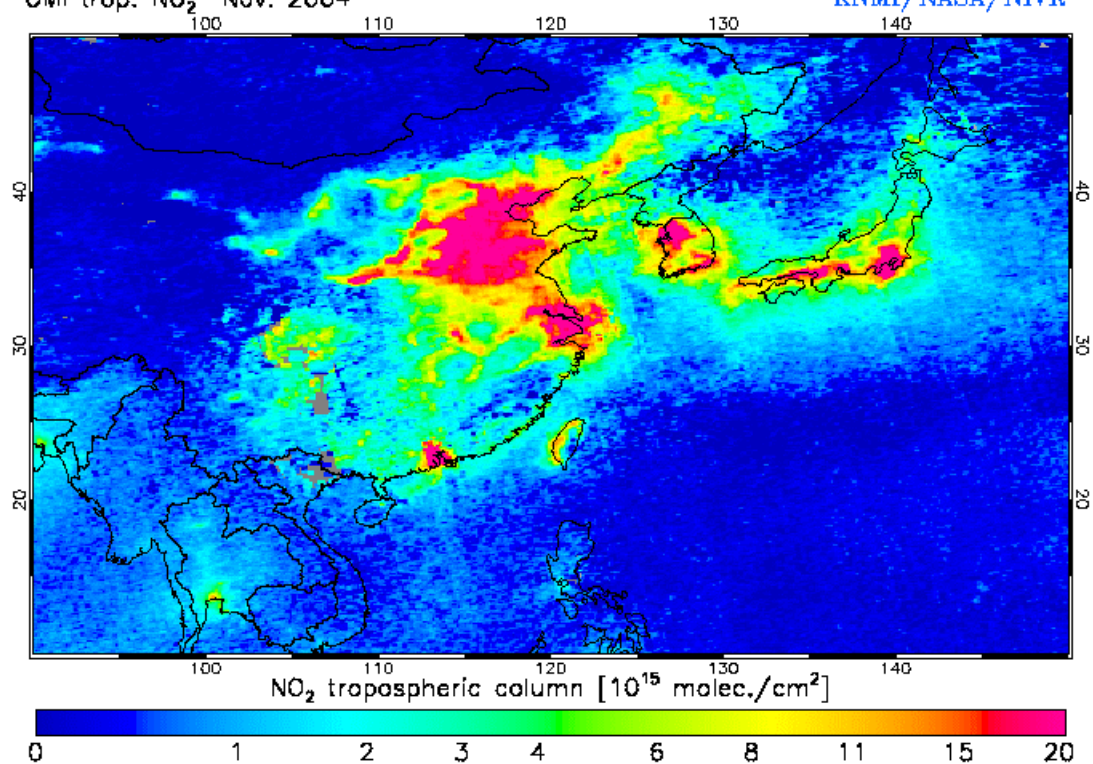
Monthly mean tropospheric NO₂ over Southeast Asia during October 2004 to February 2007 extracted from OMI (the Ozone Monitoring Instrument) version 1.0 (website, http://www.temis.nl/airpollution/no2col/no2regioomimonth_col3.php) (Boersma, et al., 2007).

Boersma, K. F., Eskes, H. J., Veefkind, J. P., Brinksma, E. J., van der A, R. J., Sneep, M., van den Oord, G. H. J., Levelt, P. F., Stammes, P., Gleason J. F., and Bucsela, E. J.: Near-real time retrieval of tropospheric NO₂ from OMI, *Atm. Chem. Phys.*, 7, 2013-2128, 2007, [http:// www.atmos-chem-phys.net/7/2103/2007/](http://www.atmos-chem-phys.net/7/2103/2007/).



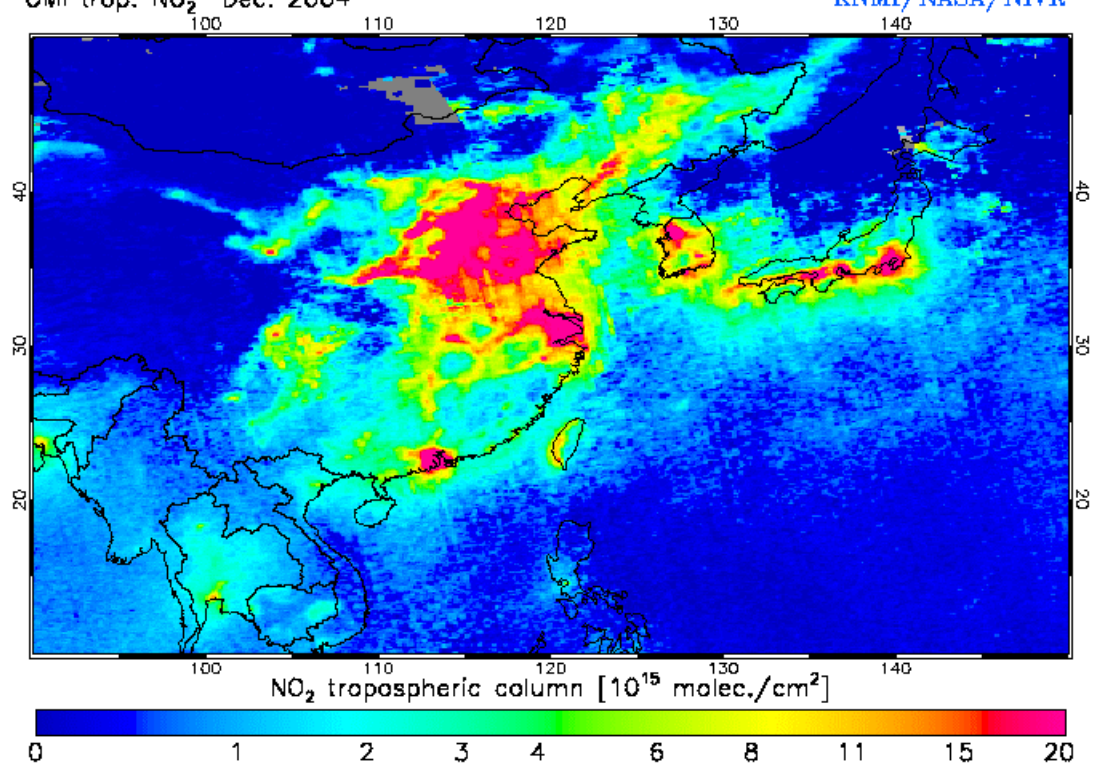
OMI trop. NO₂ Nov. 2004

KNMI/NASA/NIVR



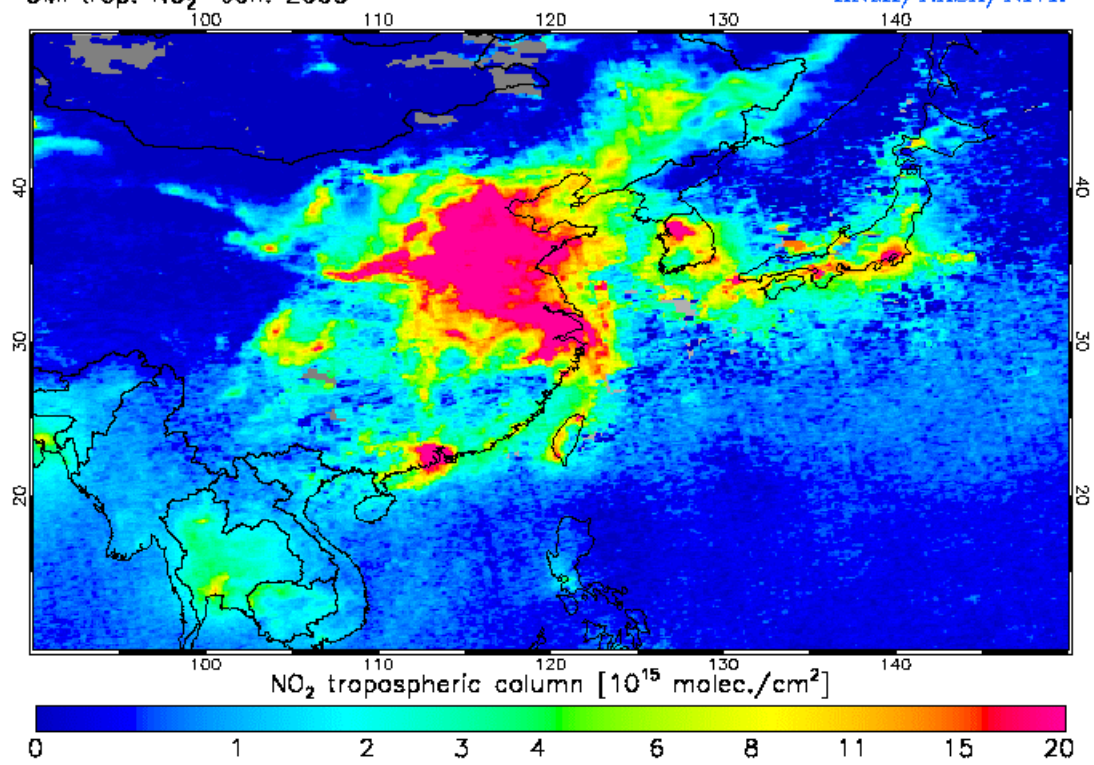
OMI trop. NO₂ Dec. 2004

KNMI/NASA/NIVR



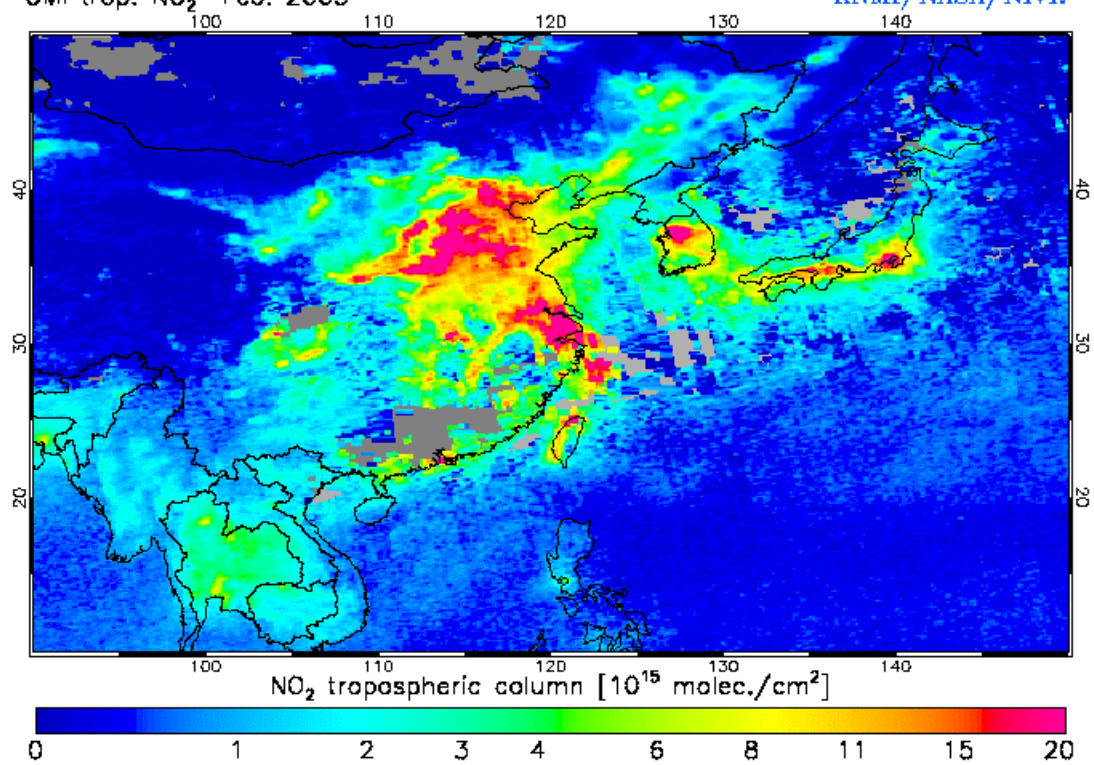
OMI trop. NO₂ Jan. 2005

KNMI/NASA/NIVR



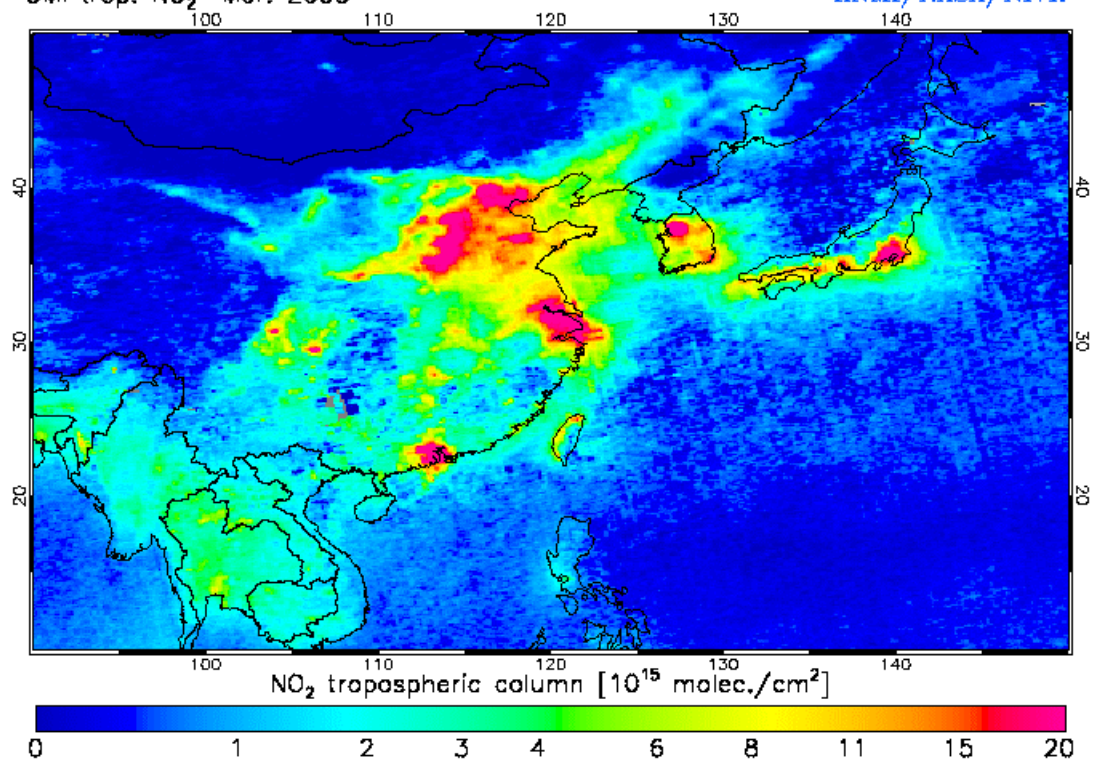
OMI trop. NO₂ Feb. 2005

KNMI/NASA/NIVR



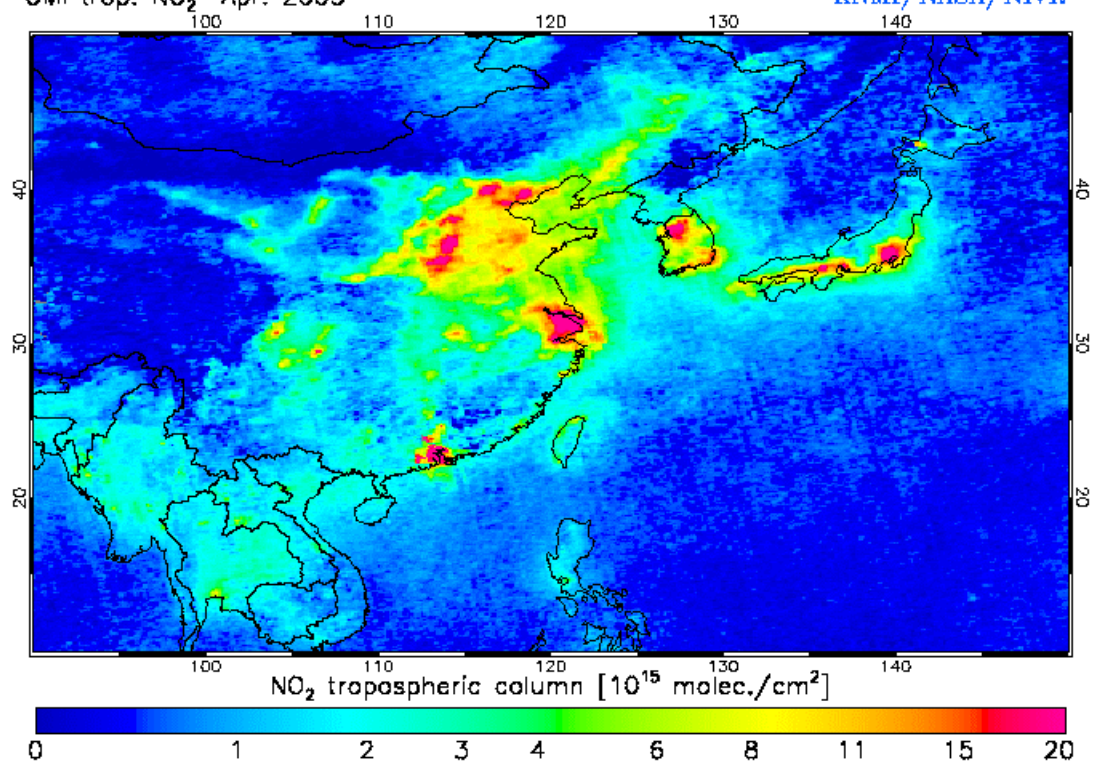
OMI trop. NO₂ Mar. 2005

KNMI/NASA/NIVR



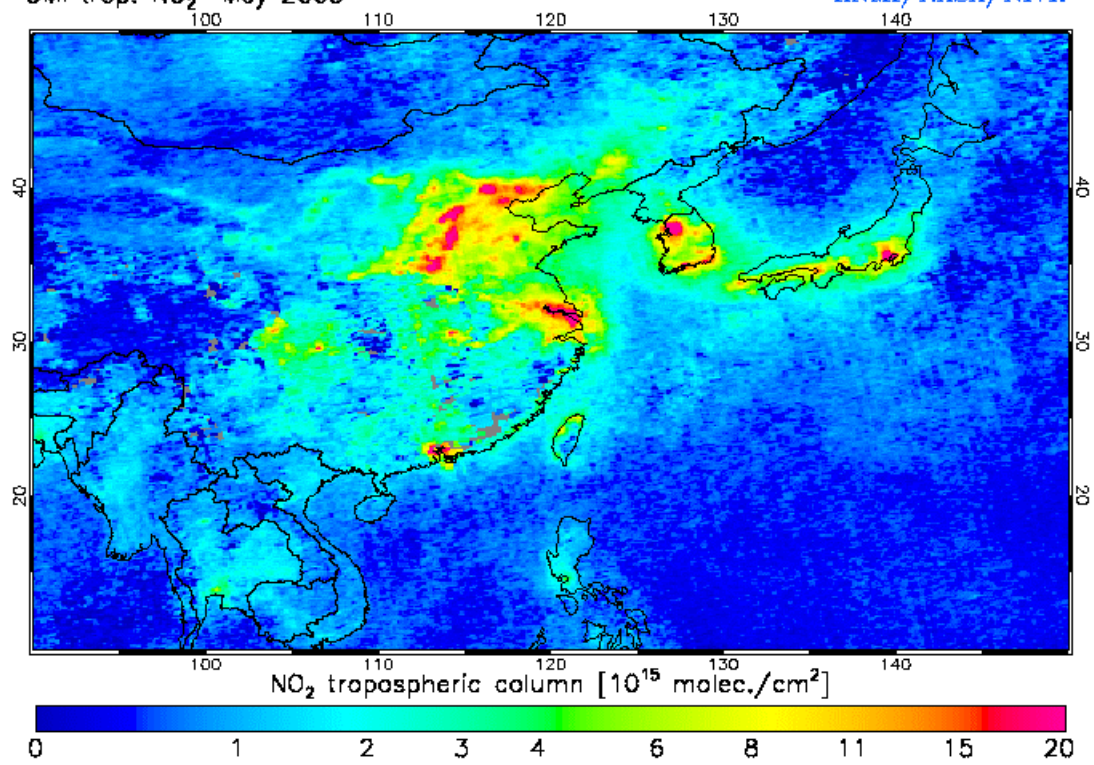
OMI trop. NO₂ Apr. 2005

KNMI/NASA/NIVR



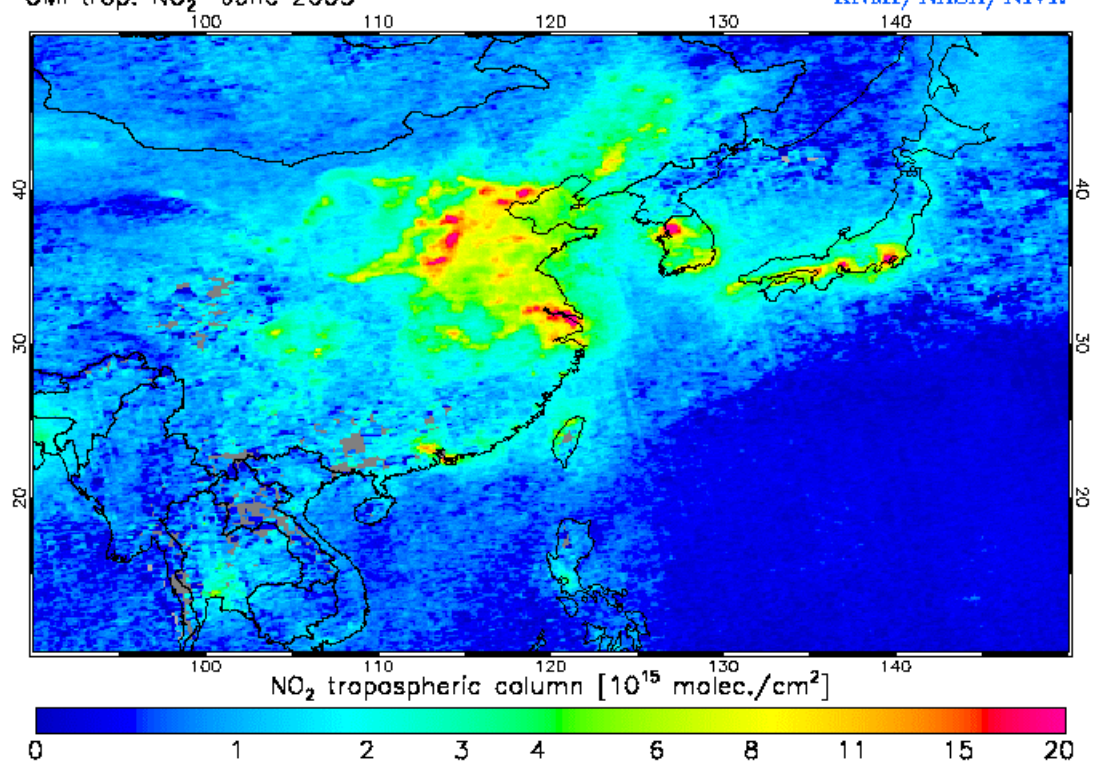
OMI trop. NO₂ May 2005

KNMI/NASA/NIVR



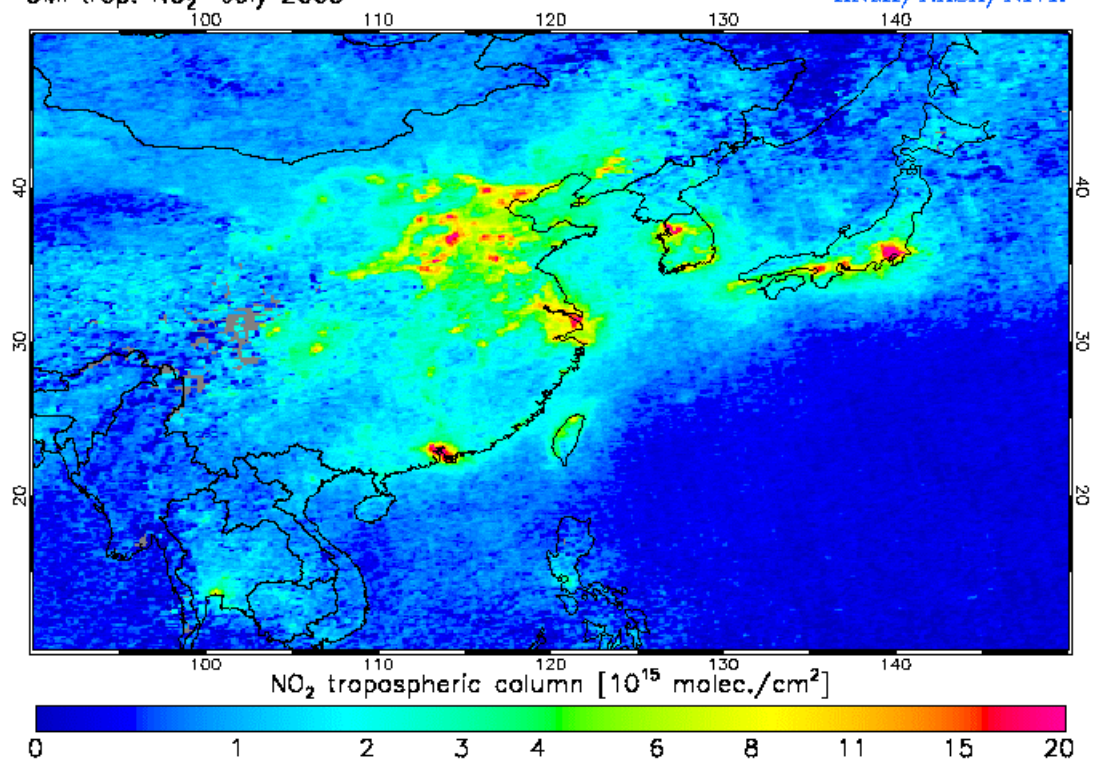
OMI trop. NO₂ June 2005

KNMI/NASA/NIVR



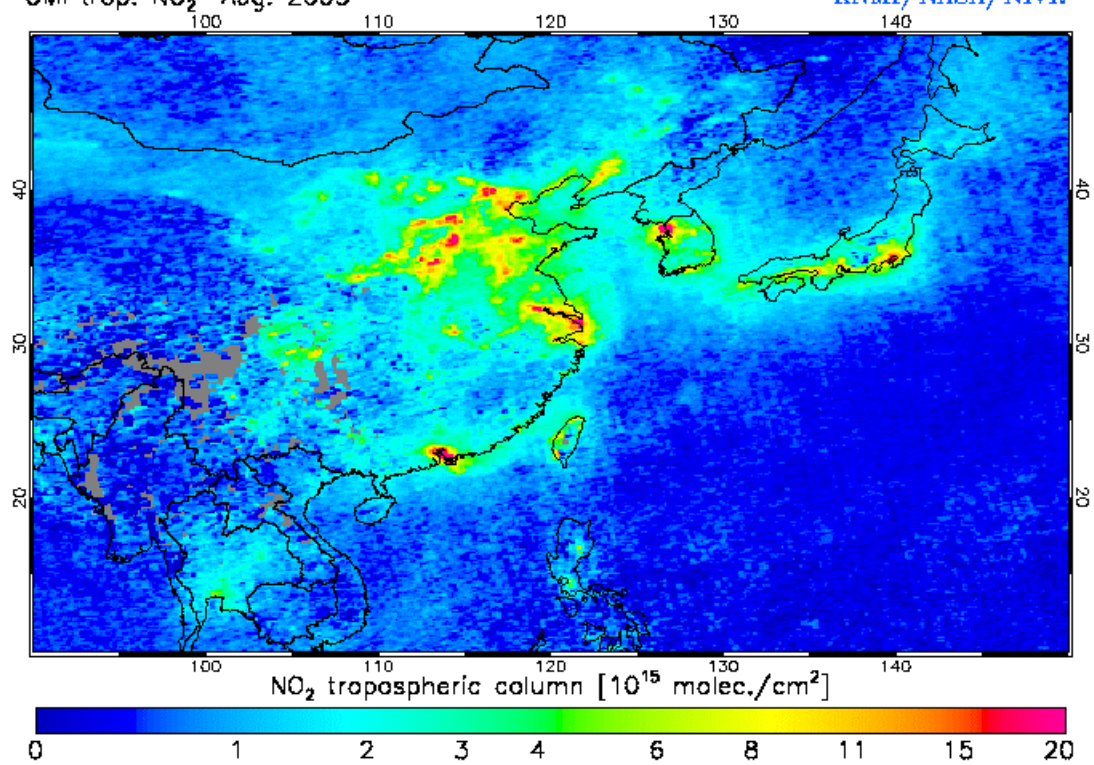
OMI trop. NO₂ July 2005

KNMI/NASA/NIVR



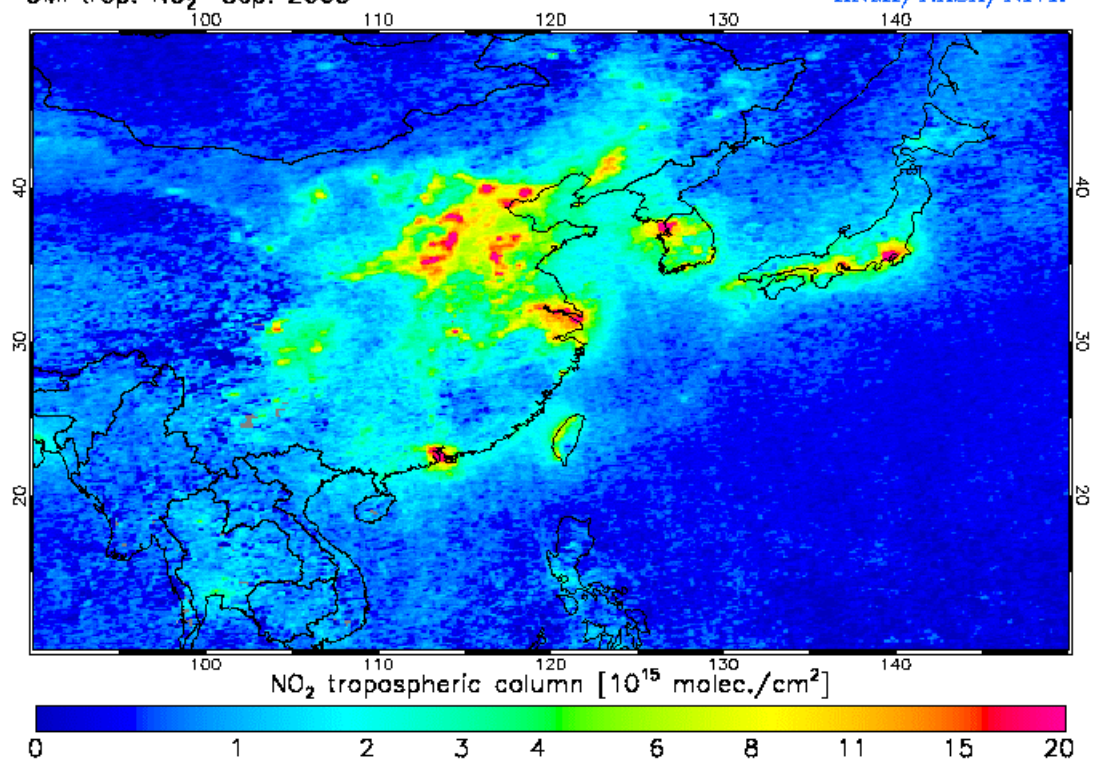
OMI trop. NO₂ Aug. 2005

KNMI/NASA/NIVR



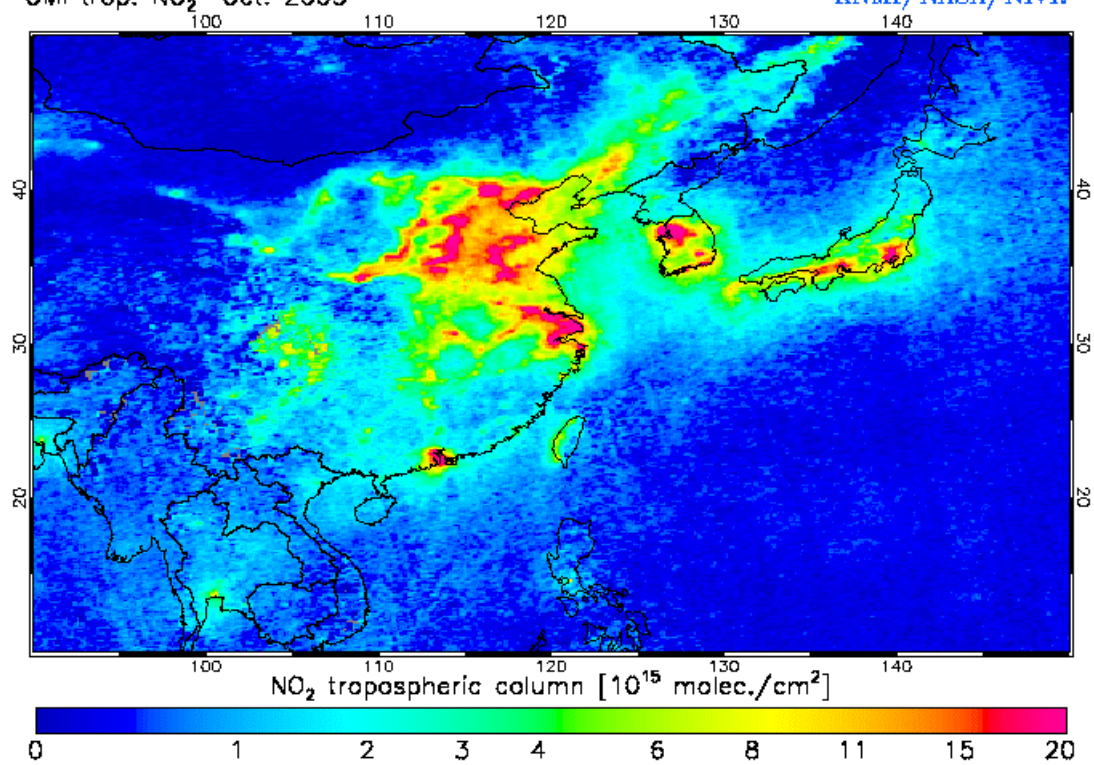
OMI trop. NO₂ Sep. 2005

KNMI/NASA/NIVR



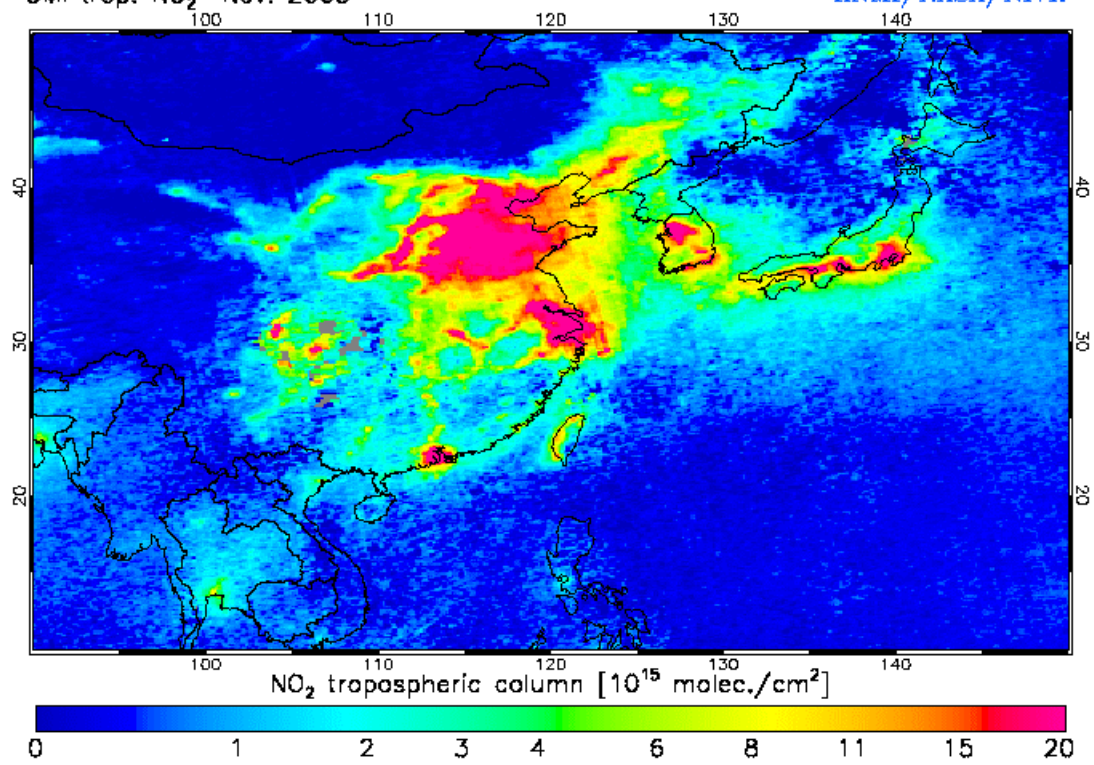
OMI trop. NO₂ Oct. 2005

KNMI/NASA/NIVR



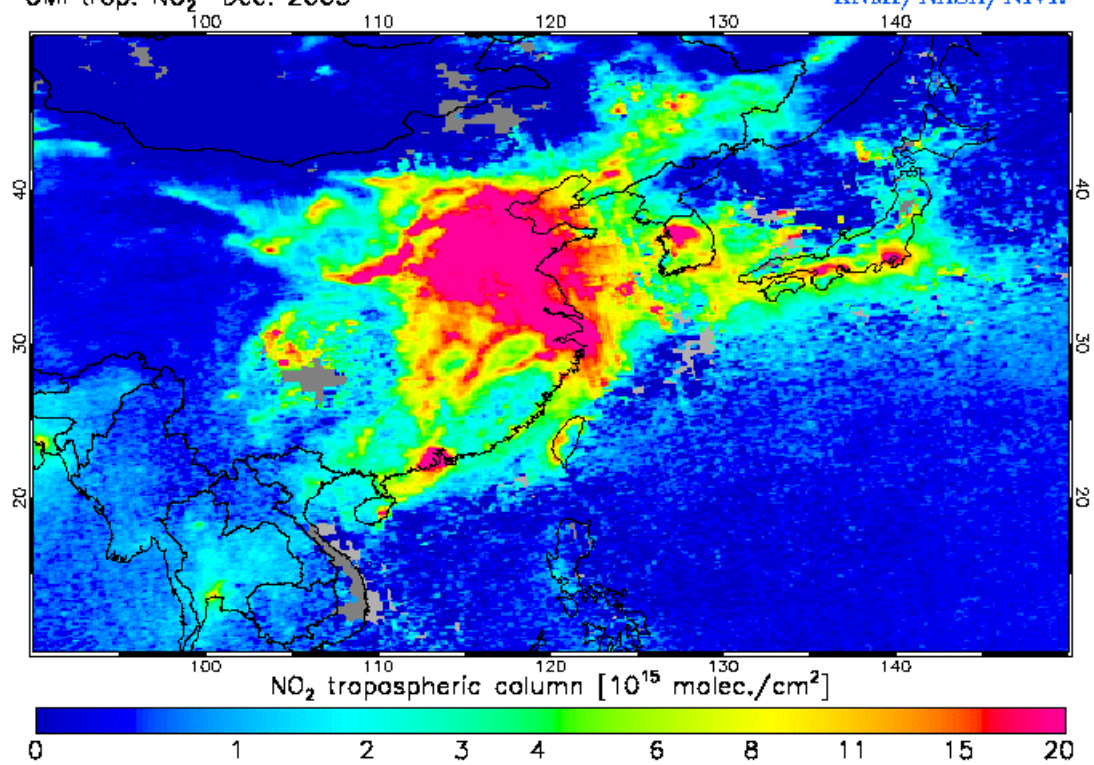
OMI trop. NO₂ Nov. 2005

KNMI/NASA/NIVR



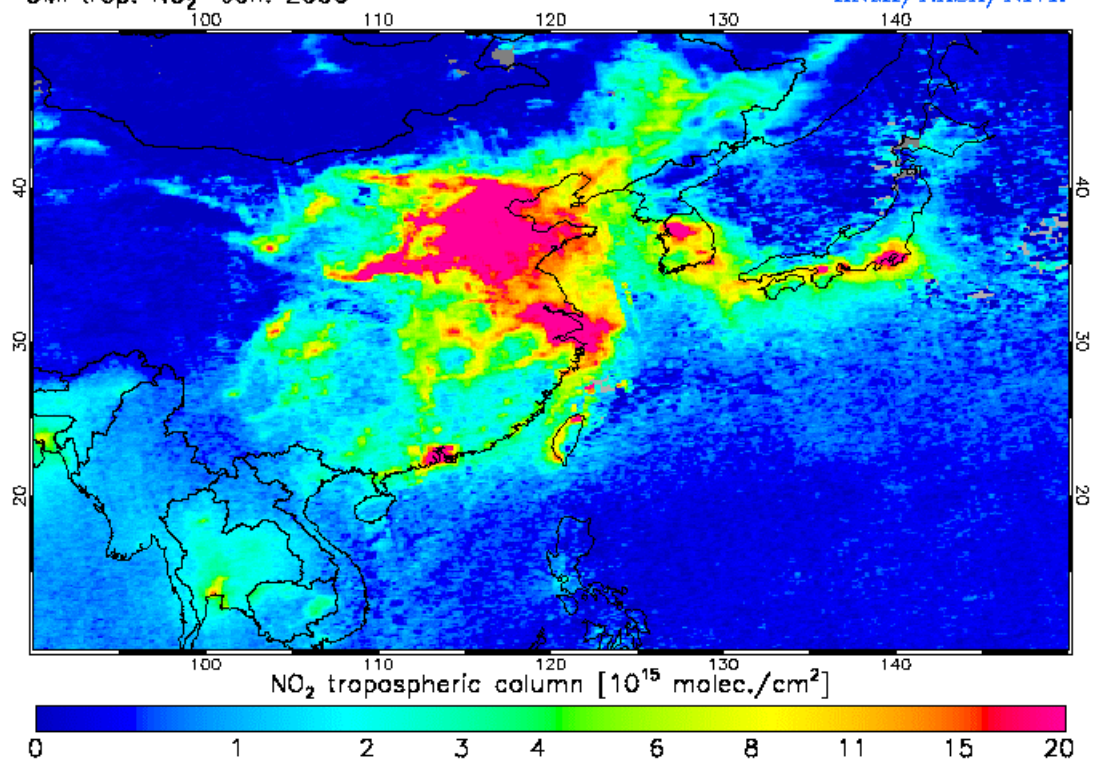
OMI trop. NO₂ Dec. 2005

KNMI/NASA/NIVR



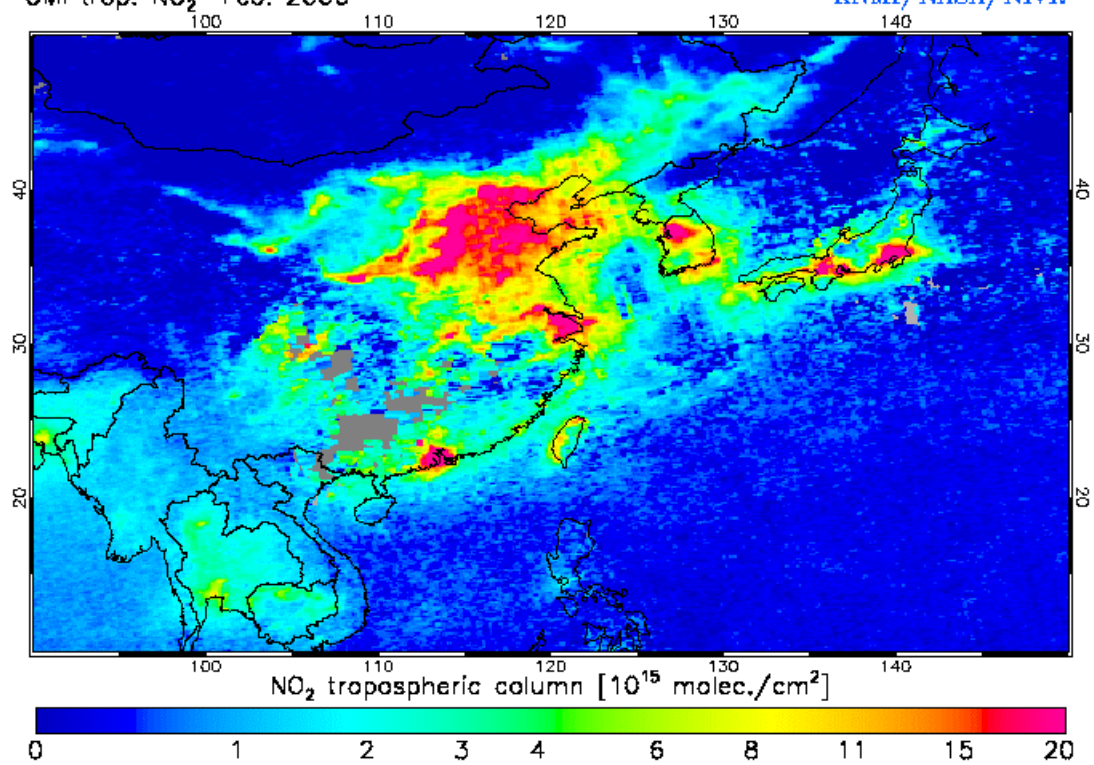
OMI trop. NO₂ Jan. 2006

KNMI/NASA/NIVR



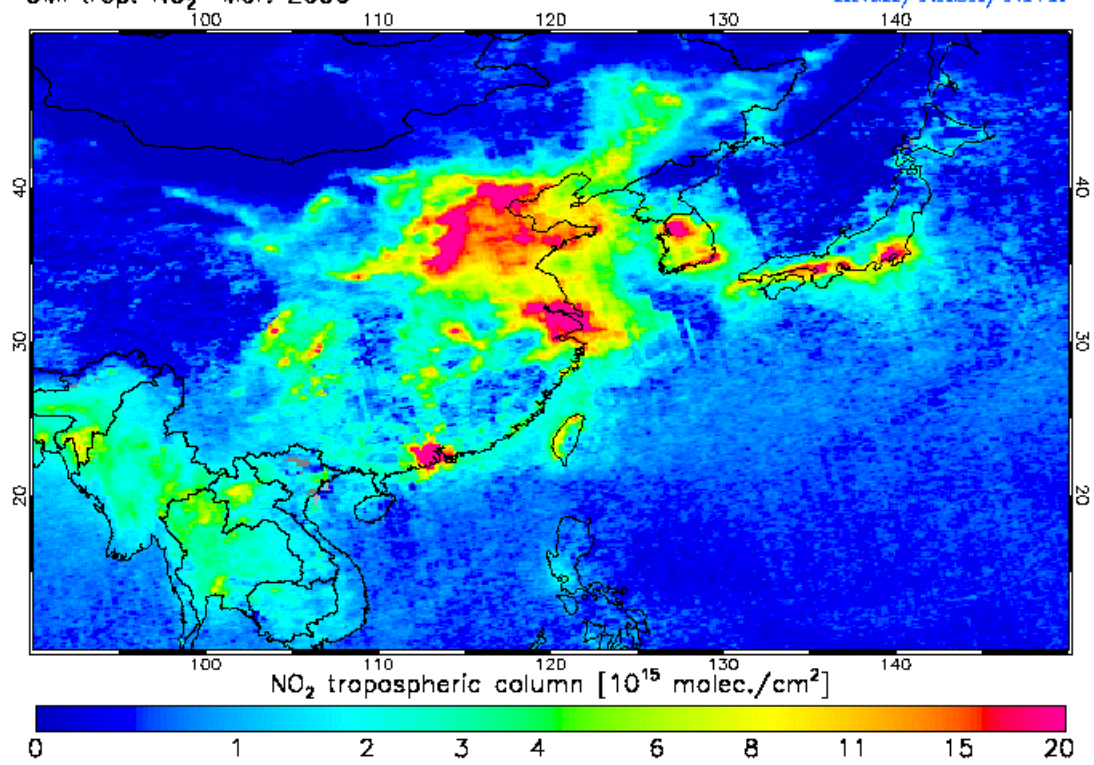
OMI trop. NO₂ Feb. 2006

KNMI/NASA/NIVR



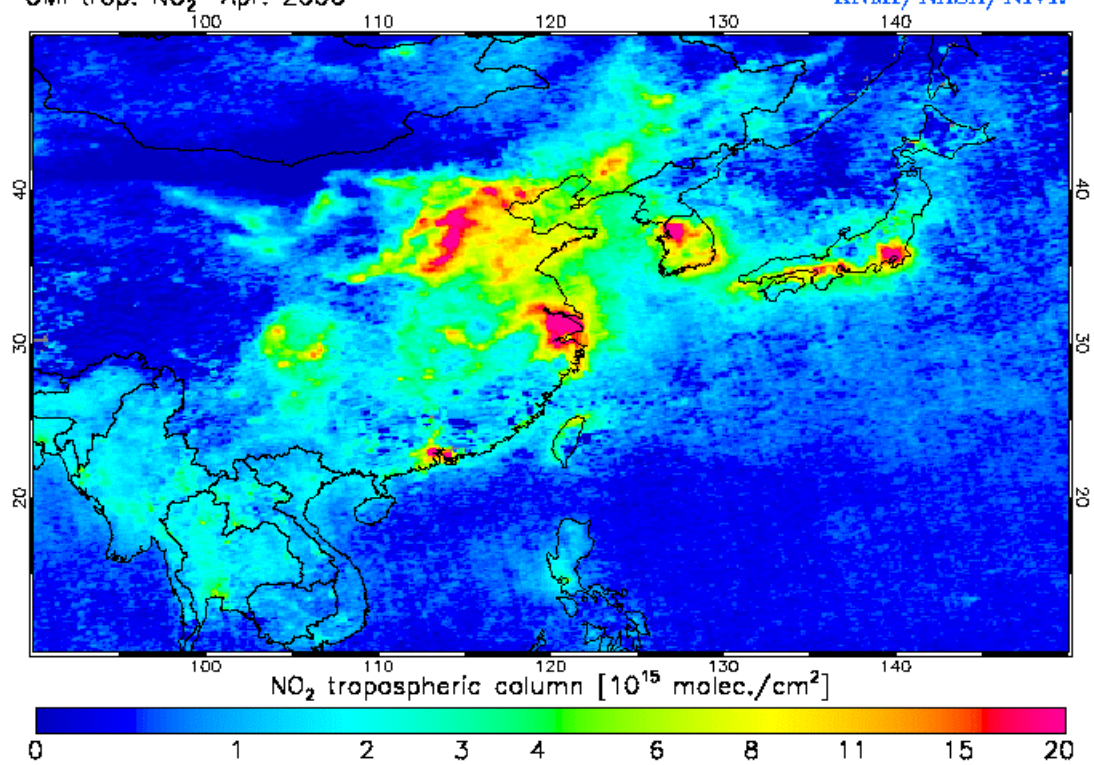
OMI trop. NO₂ Mar. 2006

KNMI/NASA/NIVR



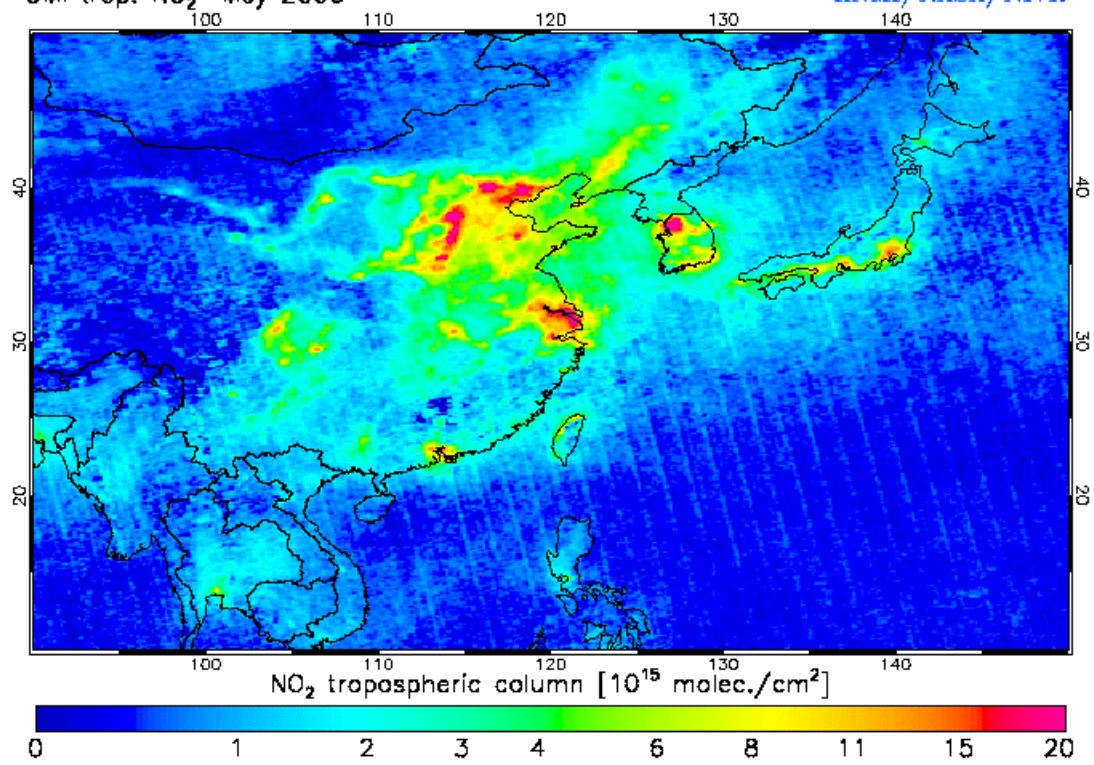
OMI trop. NO₂ Apr. 2006

KNMI/NASA/NIVR



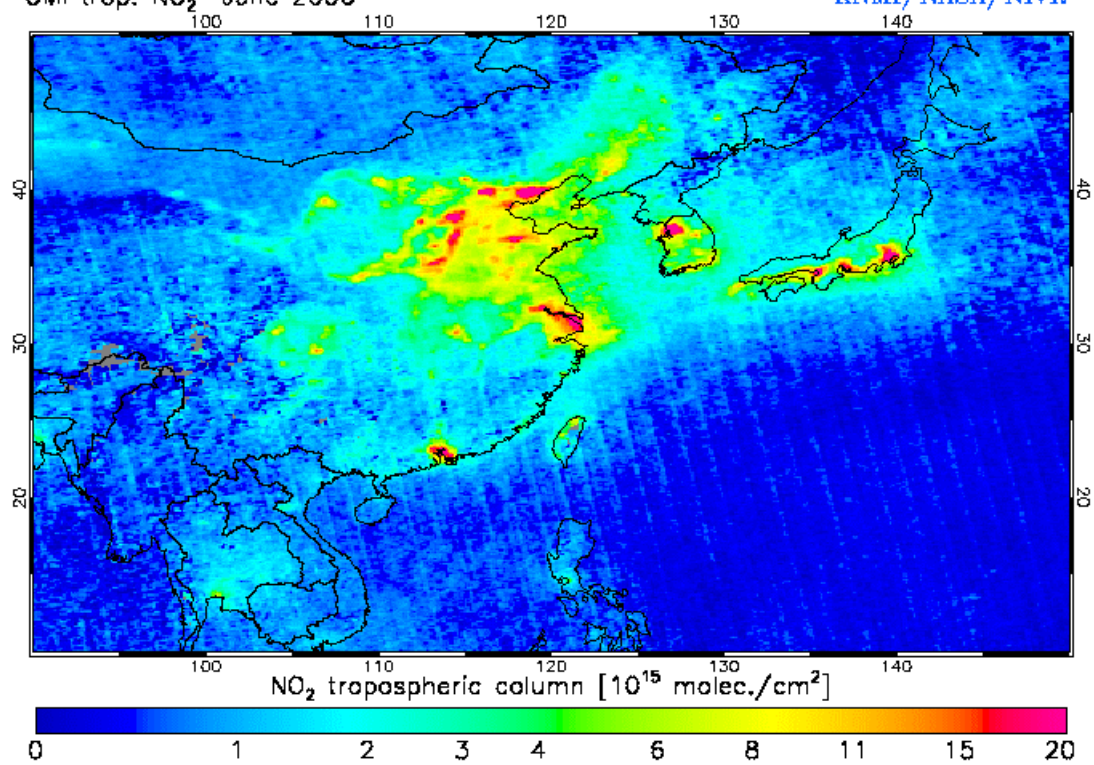
OMI trop. NO₂ May 2006

KNMI/NASA/NIVR



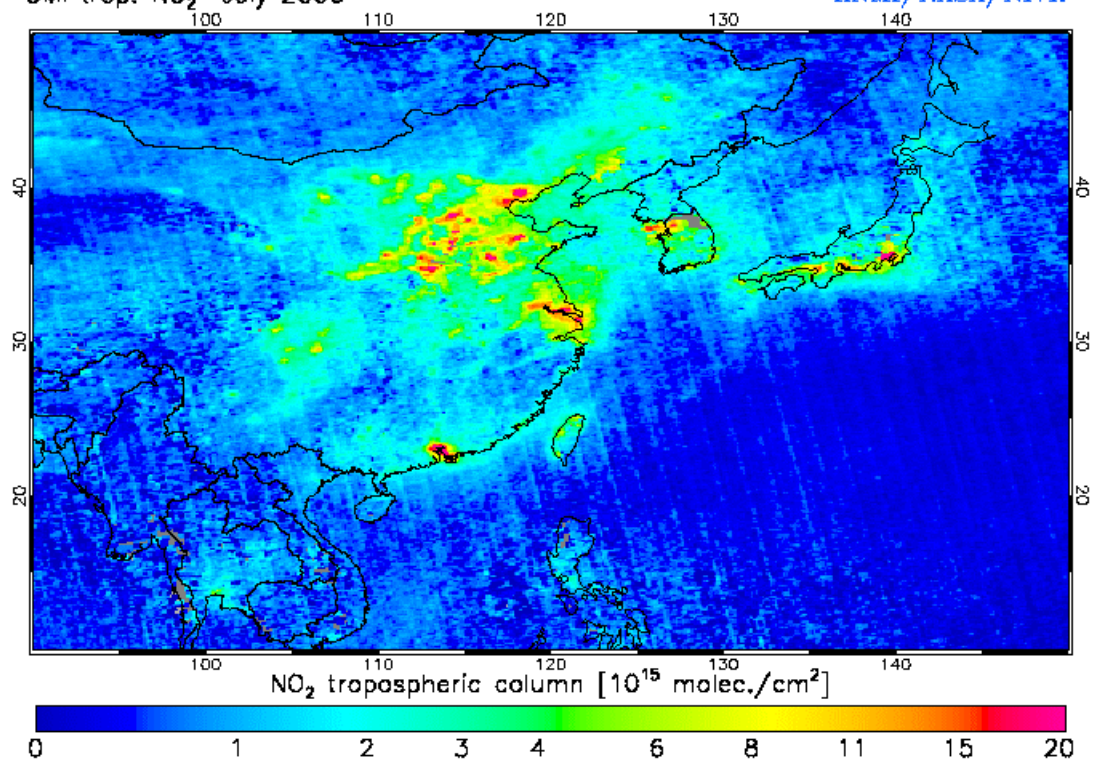
OMI trop. NO₂ June 2006

KNMI/NASA/NIVR



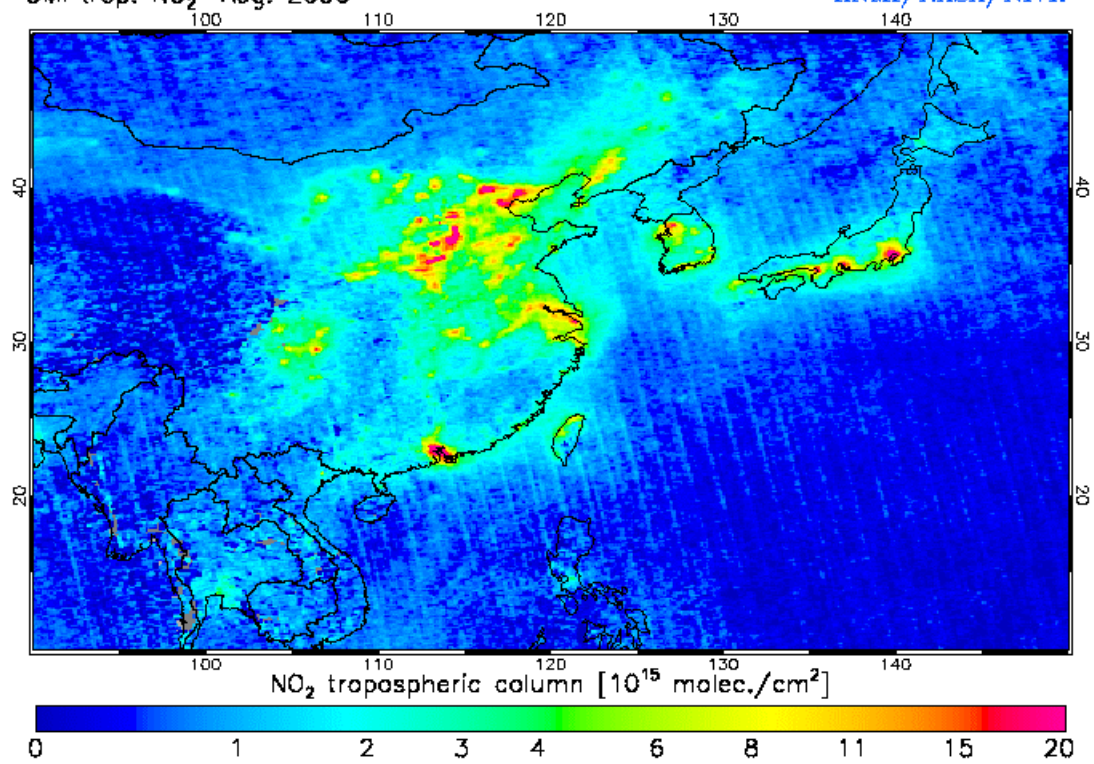
OMI trop. NO₂ July 2006

KNMI/NASA/NIVR



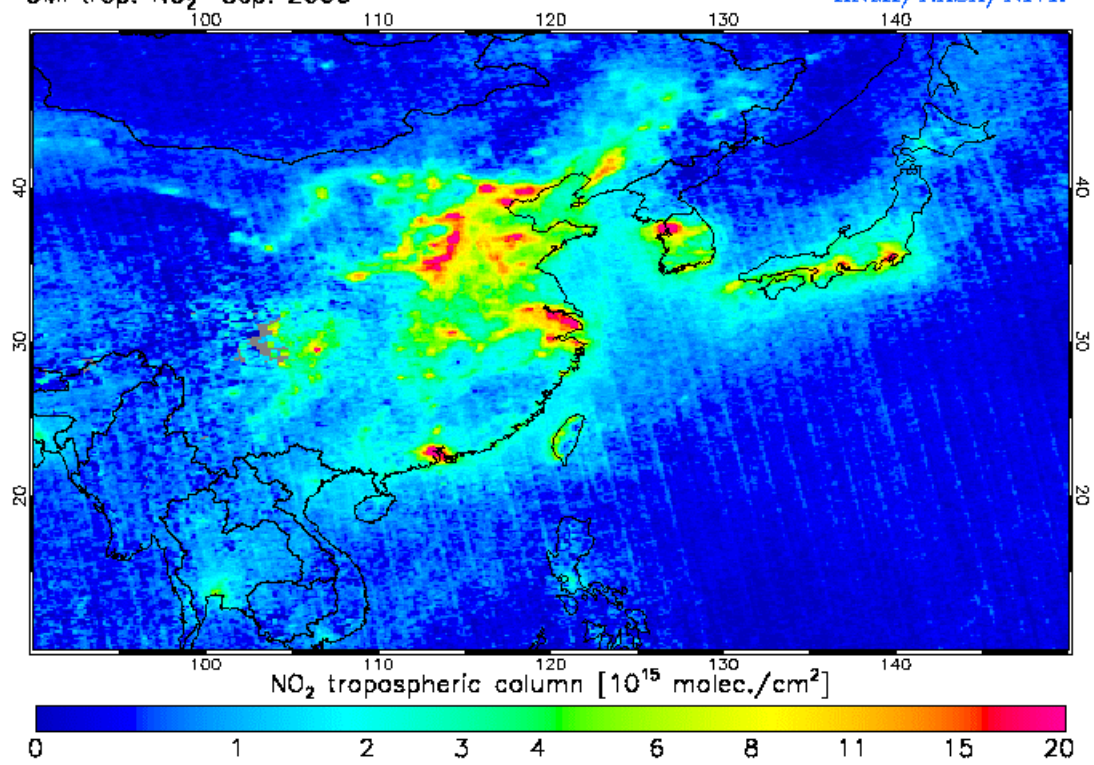
OMI trop. NO₂ Aug. 2006

KNMI/NASA/NIVR



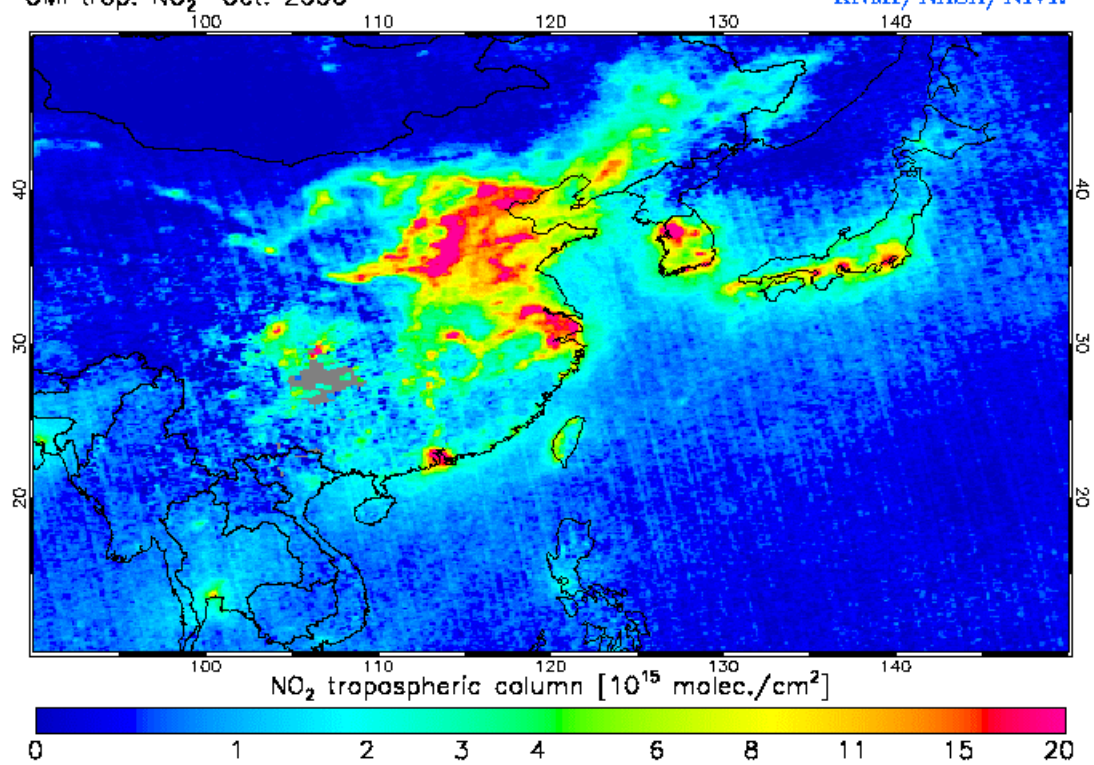
OMI trop. NO₂ Sep. 2006

KNMI/NASA/NIVR



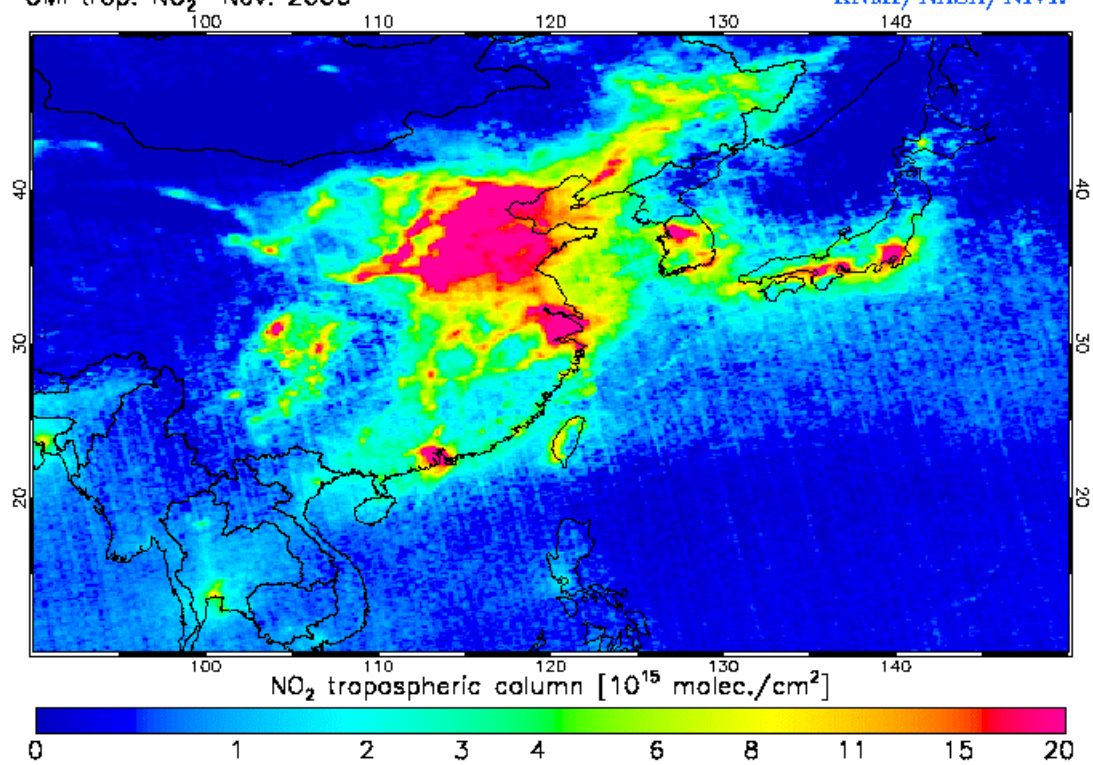
OMI trop. NO₂ Oct. 2006

KNMI/NASA/NIVR



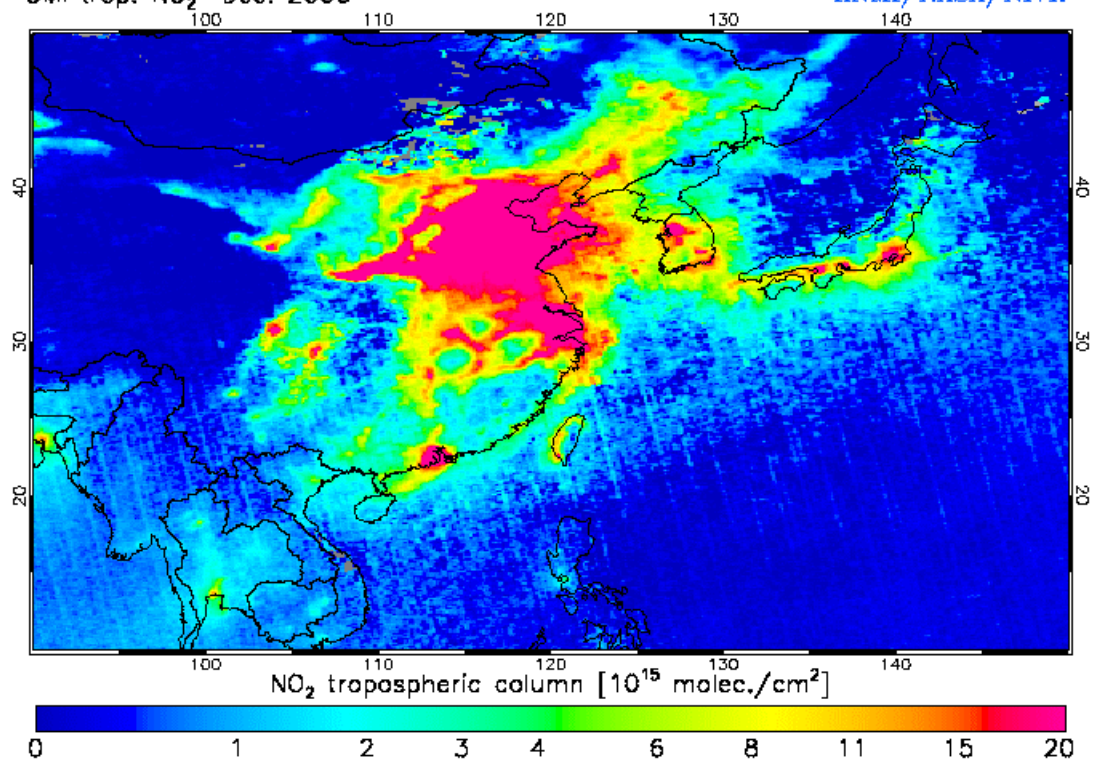
OMI trop. NO₂ Nov. 2006

KNMI/NASA/NIVR



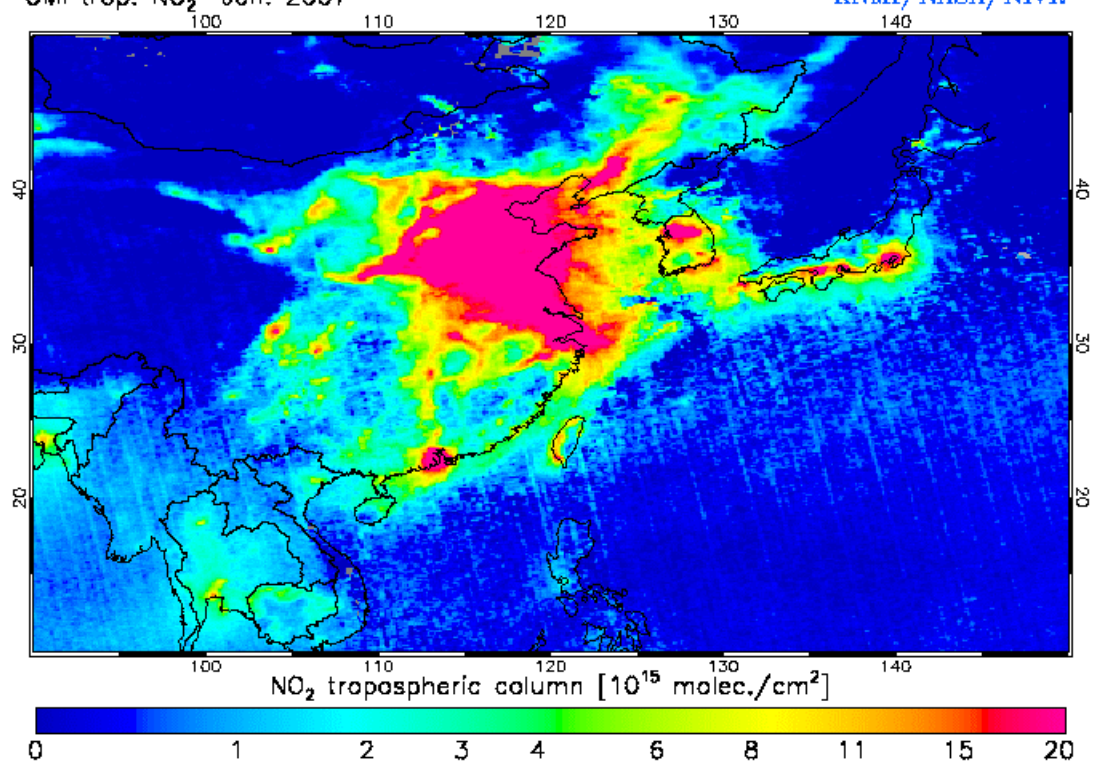
OMI trop. NO₂ Dec. 2006

KNMI/NASA/NIVR



OMI trop. NO₂ Jan. 2007

KNMI/NASA/NIVR



OMI trop. NO₂ Feb. 2007

KNMI/NASA/NIVR

